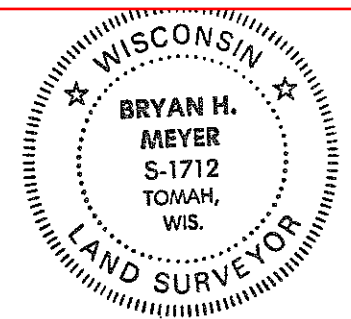


CERTIFICATE

CERTIFIED LAND CORNER

No. 55

41901182000



H. A. Sime and Associates
 P. O. Box 705
 Tomah, Wisconsin 54660
 Phone: (608)-372-5392

I, Bryan H. Meyer, do hereby certify that on the 21st day of October 19 91, I found (no evidence) of the East 1/4 corner of Section 18, T 19 N, R 1 E Fourth Principal Meridian, and I re-established said corner according to the Wisconsin Statutes as shown and described hereon.

Dated this 23rd day of Oct. 19 91.
Bryan H. Meyer
 Deputy County Surveyor
Title

History of corner establishment since Original Government Survey

No recorded history.

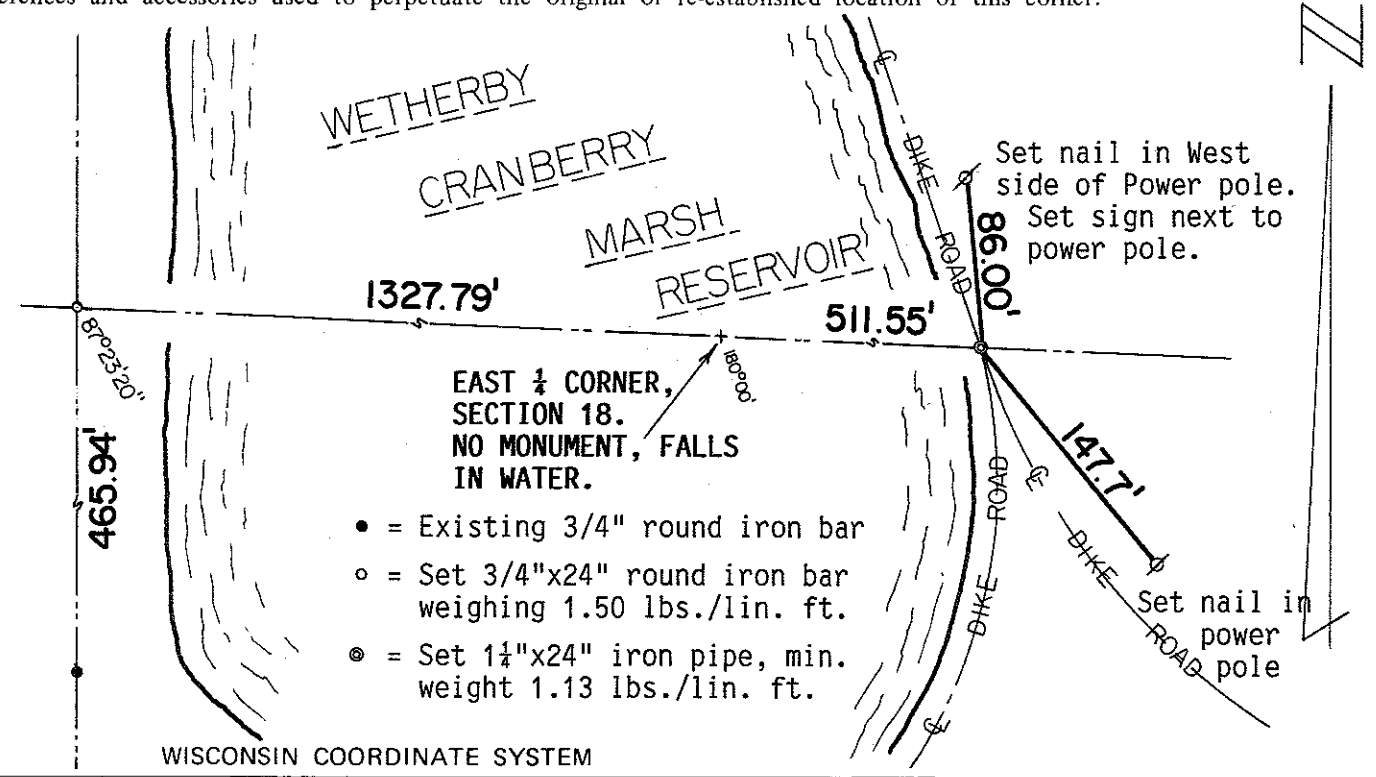
Description of corner evidence found:

This corner was re-established on line and equidistant between the Northeast and Southeast corners of Section 18 as per law.

Description of corner and witness monuments, references and accessories used to perpetuate the original or re-established location of this corner:

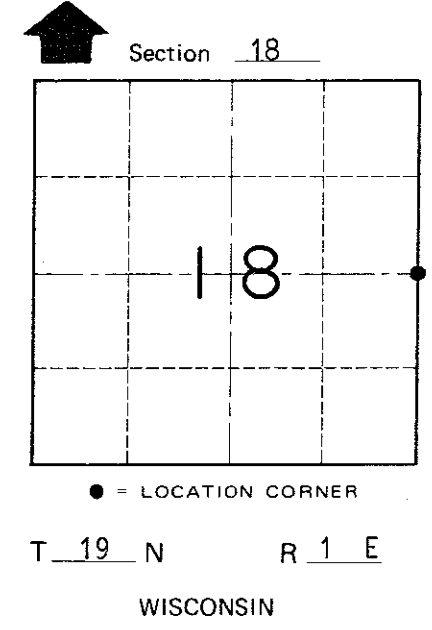
Crew: Meyer, Kenworthy
 Date: October 21, 1991 - 2:00 P. M.
 Weather: P. Cloudy, 60°±
 Witnesses to corner location:
John Kenworthy
Bryan H. Meyer

COUNTY SURVEYOR FORM NO. 1



EAST 1/4 CORNER, SECTION 18. NO MONUMENT, FALLS IN WATER.

- = Existing 3/4" round iron bar
- = Set 3/4"x24" round iron bar weighing 1.50 lbs./lin. ft.
- ⊙ = Set 1 1/4"x24" iron pipe, min. weight 1.13 lbs./lin. ft.



SURVEY CONTROL ORDER

Horizontal	_____
Vertical	_____

Corner	East (X)	North (Y)	Elevation (Z)	Zone
Control Sta. Name				

~~Village of~~ Town of Scott
 County of Monroe