

CERTIFICATE

CERTIFIED LAND CORNER

No. 72

41901180020

I, Gary L. Dechant, do hereby certify that on the 25th day of March 19 89, I found ~~(evidence)~~ (no evidence) of the N¹/₄ corner of Section 19, T 19 N, R 1 E Fourth Principal Meridian, and I re-established said corner according to the Wisconsin Statutes as shown and described hereon.

Dated this 5th day of April 19 89.

Gary L. Dechant

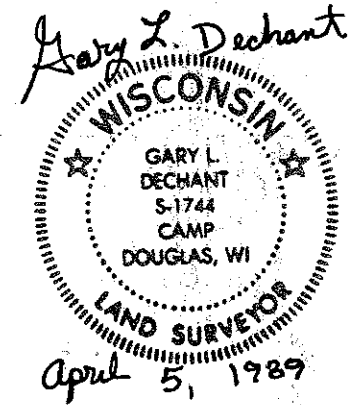
Registered Land Surveyor, S-1744
Title

History of corner establishment since Original Government Survey

No known recorded history since the original government survey. Kennedy may have been here, but is uncertain.

Description of corner evidence found:

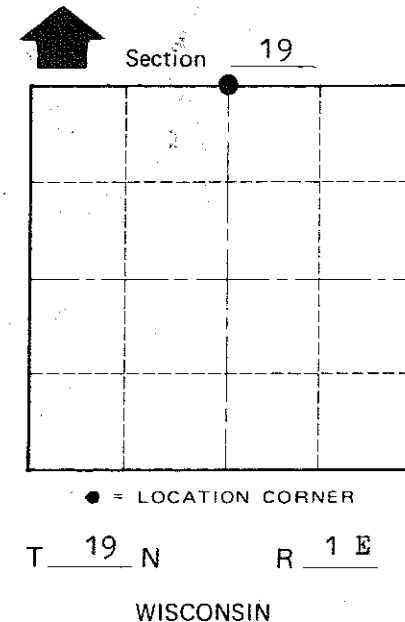
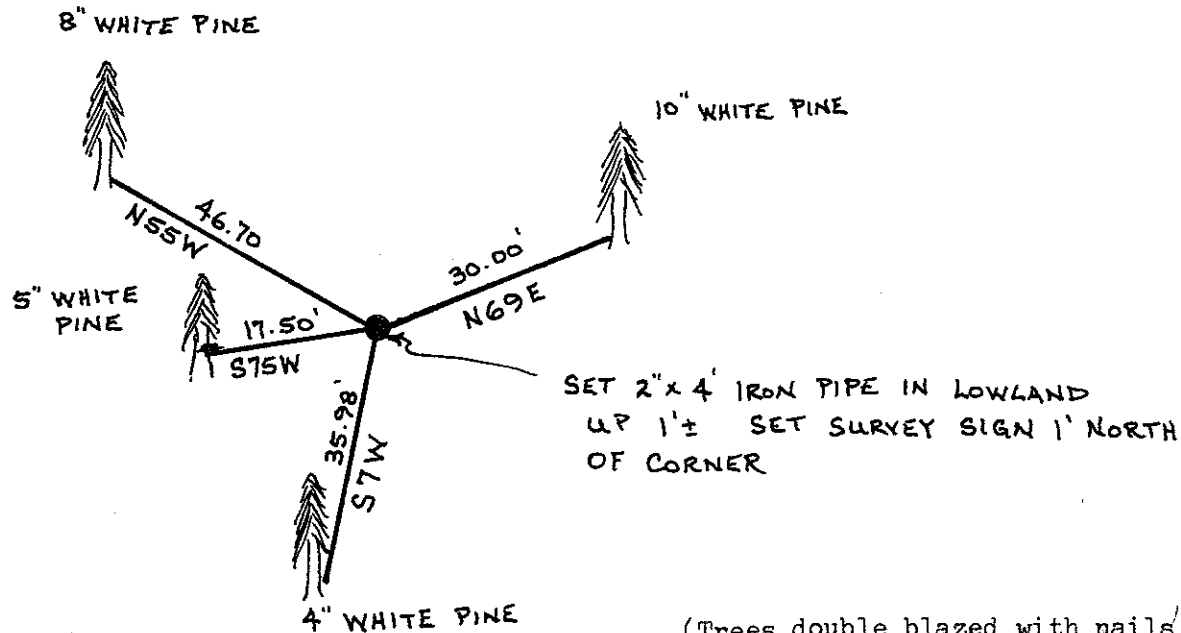
Set corner by single proportionate measurement.



Description of corner and witness monuments, references and accessories used to perpetuate the original or re-established location of this corner:

Witnesses to corner location:

Gary L. Dechant



● = LOCATION CORNER

T 19 N R 1 E

WISCONSIN

(Trees double blazed with nails set)

COUNTY SURVEYOR FORM NO. 1

SURVEY CONTROL ORDER

Horizontal _____
Vertical _____

WISCONSIN COORDINATE SYSTEM

Corner	East (X)	North (Y)	Elevation (Z)	Zone
Control Sta. Name				

~~City & Village of~~ Town Scott

County of Monroe