

# 56

**U.S. PUBLIC LAND CORNER  
MAINTENANCE**

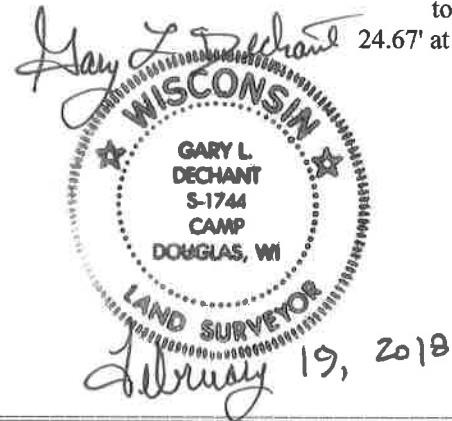
**Corner ID : E1/4 Sec. 17, T19N-R1E  
41901172000**

| <u>DATE</u>       | <u>CREW</u>                         | <u>MONUMENT TYPE</u> -----   |
|-------------------|-------------------------------------|--|
| February 19, 2018 | Zachariah P.Dechant<br>Gary Dechant | Existing 1/4" round iron bar 2' west of center line Copper Road<br>Down 2" |

References:

|  | <u>Bearing</u> | <u>Distance</u>  |
|--|----------------|--|
| 1) Set 1"x24" iron pipe, down 4", 4'SW of 3" White Pine                      | N58E           | 58.61'   |
| 2) Set 1"x24" iron pipe, down 4"   | East           | 40.49'   |
| 3) Set 1"x24" iron pipe, down 4", 4' NW of 7" White Pine                     | S58W           | 51.89'   |
| 4) Existing 2" capped iron pipe, up 2', Kennedy's witness pipe of the 1930's | West           | 24.75' at ground level<br>to witness pipe<br>24.67' at top |

1/4" corner iron and reference markers set on straight lines.



I, William C. Jung, do hereby certify that on the twentieth day of June 1980, I found evidence of the East 1/4 corner of Section 17, T 19 N, R 1 E Fourth Principal Meridian, and I re-established said corner according to the Wisconsin Statutes as shown and described hereon.

Dated this 24th day of Feb. 1981.

William C. Jung

William C. Jung - R.L.S. 1323

History of corner establishment since Original Government Survey

In the late 1930's, Kennedy set an oak stake in the road with a witness pipe 24.75 feet to the West.

Description of corner evidence found:

I set a 1/4"x30" iron bar 24.75 feet <sup>East</sup> of Kennedy's pipe.

**See Reverse Side For Maintenance**

**Approved: HARLEY A. SIME  
MONROE CO. SURVEYOR**

Description of corner and witness monuments, references and accessories used to perpetuate the original or re-established location of this corner:

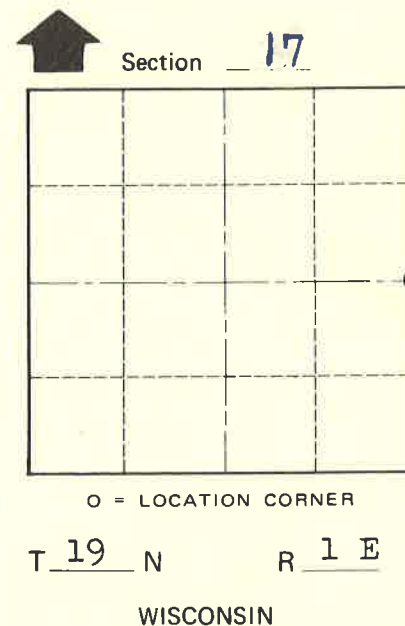
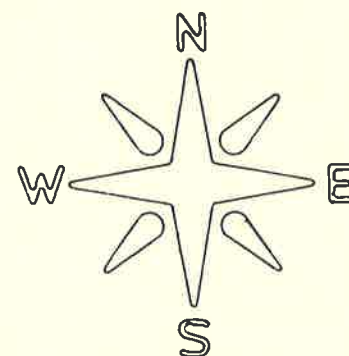
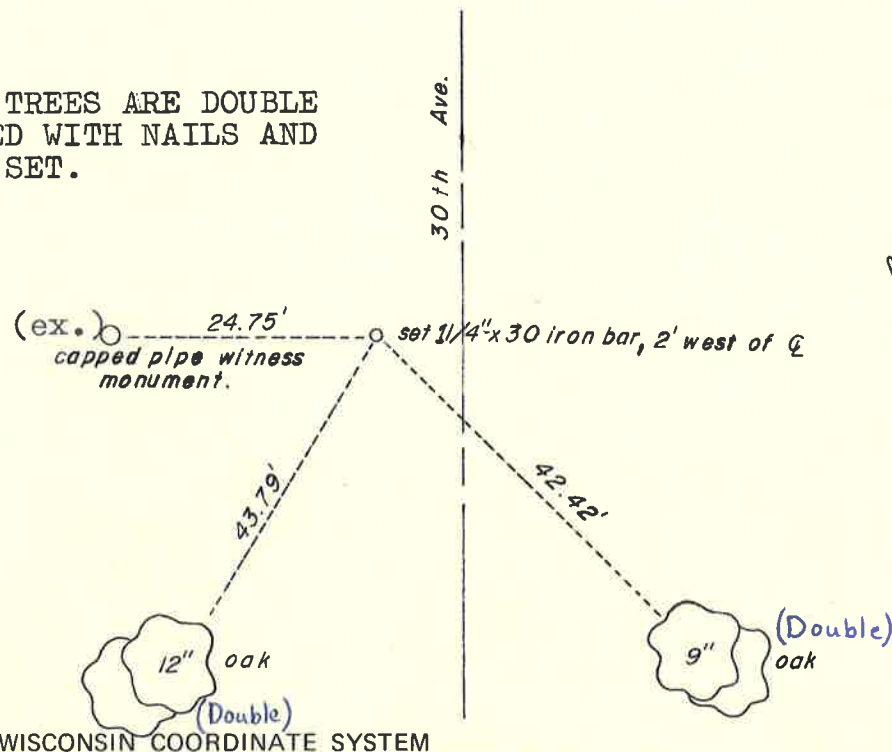
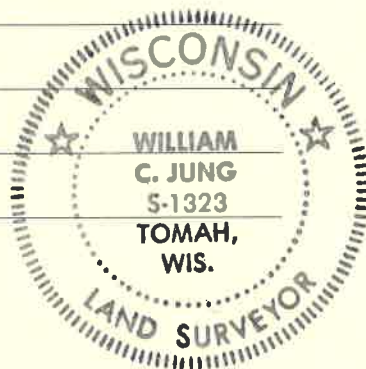
Witnesses to corner location:

William C. Jung

Bryan Meyer

Charles Dade

BOTH TREES ARE DOUBLE BLAZED WITH NAILS AND CAPS SET.



SURVEY CONTROL ORDER

|            |       |
|------------|-------|
| Horizontal | _____ |
| Vertical   | _____ |

| Corner            | East (X) | North (Y) | Elevation (Z) | Zone |
|-------------------|----------|-----------|---------------|------|
| Control Sta. Name |          |           |               |      |

~~City, Village or~~ Town of Scott  
County of Monroe  
Wisconsin

COUNTY SURVEYOR FORM NO. 1