

CERTIFICATE

CERTIFIED LAND CORNER

No. 70

Pg. 2

41901170020

I, Gary L. Dechant, do hereby certify that on the 21st day of August 2003, I found (evidence) (~~no evidence~~) of the S4 corner of Section 17, T 19 N, R 1 E Fourth Principal Meridian, and I re-established said corner according to the Wisconsin Statutes as shown and described hereon.

Dated this 3rd day of Sept. 2003.

Gary L. Dechant

Registered Land Surveyor 1744

Title

History of corner establishment since Original Government Survey

Fred Holden set a stone here in 1902.
Kennedy was here in May of 1938.

B. Meyer found Holden's stone(+) and witness stone to the west in 1986.

Description of corner evidence found:

Found Holden's stone in good shape with Harrison as reference marker 0.56' east.
Other ties gone or in bad shape. Logging and excavation on the west side is currently taking place. Obtained new ties.

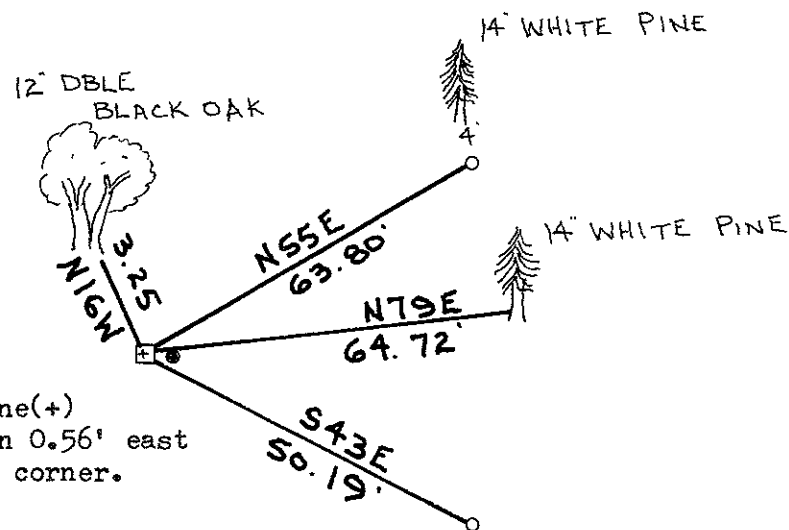
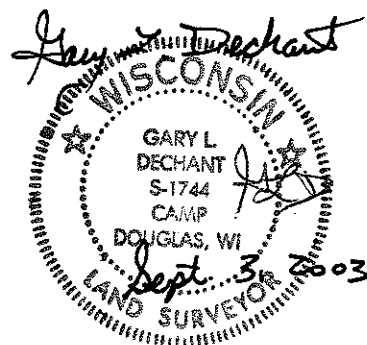
COUNTY SURVEYOR FORM NO. 1

Description of corner and witness monuments, references and accessories used to perpetuate the original or re-established location of this corner:

Witnesses to corner location:

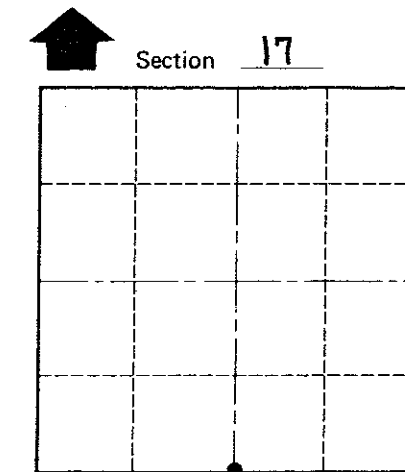
Zachariah P. Dechant

Gary L. Dechant



Existing Stone(+) with Harrison 0.56' east
Stone is the corner.

o=Set 1"O.D.x24" iron pipe



O = LOCATION CORNER

T 19 N R 1 E

WISCONSIN

SURVEY CONTROL ORDER

Horizontal _____
Vertical _____

WISCONSIN COORDINATE SYSTEM

Corner	East (X)	North (Y)	Elevation (Z)	Zone
Control Sta. Name				

City, Village or Town SCOTT

County of MONROE

I, Bryan H. Meyer, do hereby certify that on the 16th day of April 1986, I found (evidence) ~~(no evidence)~~ of the North 1/4 corner of Section 20, T 19 N, R 1 E Fourth Principal Meridian, and I re-established said corner according to the Wisconsin Statutes as shown and described hereon.

Dated this 11th day of Dec. 1986.

Bryan H. Meyer

Deputy County Surveyor
Title

History of corner establishment since Original Government Survey

Fred A. Holden was here in June of 1902 and set a stone with a "X" mark at the corner and a witness stone 20 links West. Kennedy was here in May of 1938.

Description of corner evidence found:

I found Mr. Holden's stone with a "X" mark and the Witness stone to the West! The stone measures 6"x7 1/2" and is flush with the ground at the intersection of down fences from the West and South.



COUNTY SURVEYOR FORM NO. 1

Description of corner and witness monuments, references and accessories used to perpetuate the original or re-established location of this corner:

Crew: Meyer (Brought my camera—took pictures)

Date: April 16, 1986 - 9:00 A. M.

Weather: Clear, 45°±

Witnesses to corner location:

Bryan Meyer

The bearings shown are magnetic hand compass bearings.

Holden's witness stone

13.29'

12" Jack Oak scribed "M" in upper blaze.

S64°W
16.56'

S2°W
47.02'

S68°E
46.24'

N44°E
57.47'

Found Mr. Holden's stone. Set Harrison marker 0.56 feet East as a witness. The stone remains as the corner.

7" Norway pine scribed "M" in upper blaze.

5" Jack Pine

NOTE: The four bearing trees shown are double blazed; the distance shown to each is to a nail set in a hack in the side of each tree.

SURVEY CONTROL ORDER

Horizontal _____

Vertical _____

WISCONSIN COORDINATE SYSTEM

Corner	East (X)	North (Y)	Elevation (Z)	Zone
Control Sta. Name				

~~City, Village or~~ Town of Scott

County of Monroe

