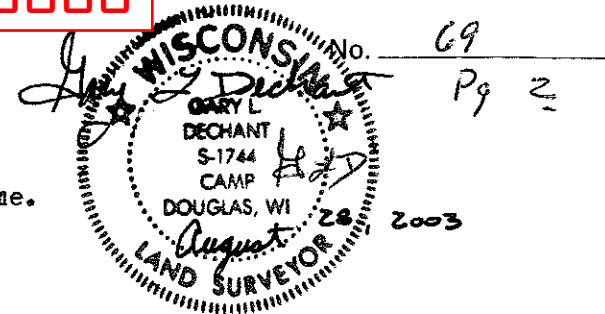


CERTIFICATE

CERTIFIED LAND CORNER

41901170000



I, Gary L. Dechant, do hereby certify that on the 21 day of August 2003, I found (evidence) (~~no evidence~~) of the SE corner of Section 17, T 19 N, R 1 E Fourth Principal Meridian, and I re-established said corner according to the Wisconsin Statutes as shown and described hereon.

Dated this 28th day of August 2003.

Gary L. Dechant

RLS 9744

Title

History of corner establishment since Original Government Survey

Fred Holden set a stone here in 1902.  
Kennedy found Holden's stone in the late 1930's.  
William Jung, in 1981, found Holden's stone and referenced same.

Description of corner evidence found:

Found stone and references destroyed or in bad condition.  
Reset corner with Railroad spike from capped witness pipe 24.75 to the west and from previous survey I did in Section 16 in 1986. The stone is under spike, but lying flat. The 5/8" heagon iron bar set by Jung on SW side of stone is also still there, but bent.

Description of corner and witness monuments, references and accessories used to perpetuate the original or re-established location of this corner:

Witnesses to corner location:

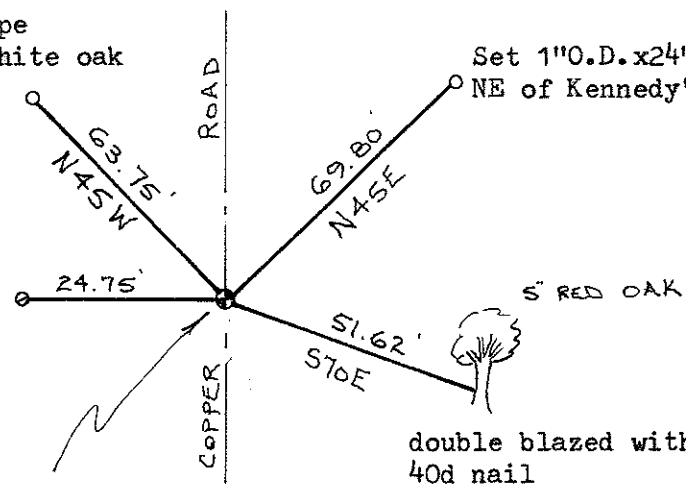
Zachariah P. Dechant

Gary L. Dechant

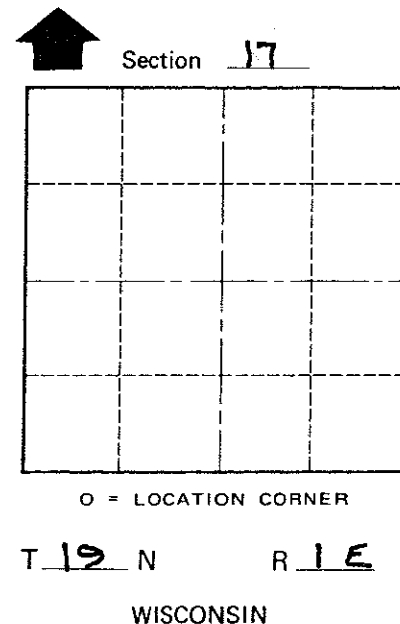
Set 1"ODx24" iron pipe between 12" double white oak & 16" White Pine

Set 1"O.D.x24" iron pipe NE of Kennedy's Red Pine

Ex. capped iron pipe in good condition, Set by Kennedy.



Very hard digging thru very thick blacktop, found stone flat(disturbed) Would of had to make the hole larger to remove or reposition stone, so filled in hole, compacted, and set RR Spike as corner over destroyed stone. 4' WEST OF E ROAD.



WISCONSIN COORDINATE SYSTEM

SURVEY CONTROL ORDER

Horizontal	_____
Vertical	_____

Corner	East (X)	North (Y)	Elevation (Z)	Zone
Control Sta. Name				

City, Village or Town SCOTT  
County of MONROE

COUNTY SURVEYOR FORM NO. 1

I, William C. Jung, do hereby certify that on the twentieth day of June 1980, I found (evidence) [redacted] of the Northeast corner of Section 20, T 19 N, R 1 E Fourth Principal Meridian, and I re-established said corner according to the Wisconsin Statutes as shown and described hereon.

Dated this 20th day of Feb. 1981.

William C. Jung

William C. Jung - R.L.S. 1323  
Title

**History of corner establishment since Original Government Survey**

Fred Holden set a stone at the corner in June of 1902. Kennedy found this stone in the late 1930's.

Description of corner evidence found:

I found the stone of record.

**Approved: HARLEY A. SIMÉ  
MONROE CO. SURVEYOR**

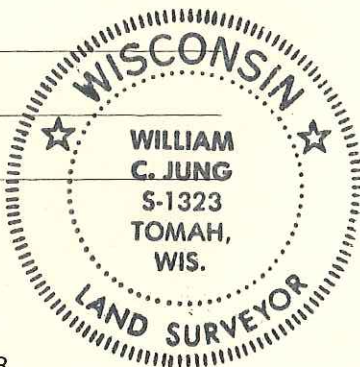
Description of corner and witness monuments, references and accessories used to perpetuate the original or re-established location of this corner:

Witnesses to corner location:

William C. Jung

Bryan H. Meyer

Charles D. Dade



(HOLDENS)  
Found 9"  
Tamrack With  
Blaze. Set Nail On  
NE Side (measurement  
From Nail)



83.08'

Found Capped Pipe  
Witness Monument

24.75'

26.54'

White Pine  
Double Blazed  
With Nail & Cap Set



AVENUE  
30th

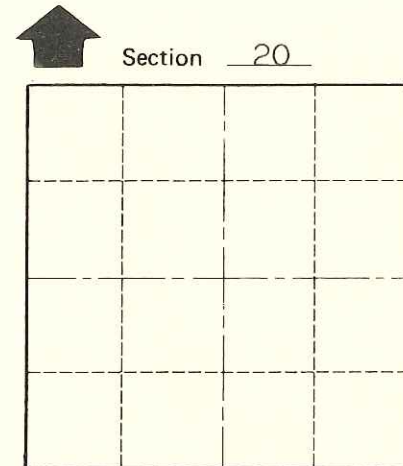
4' ±

(KENNEDY'S)  
Norway Pine  
Double Blazed  
With Nail & Cap  
Set



61.08'

Existing Limestone 4'± West Of C  
30th Avenue. Set 5/8" x 24" Hexagon  
Iron Bar Southwest Side Of Stone.  
Stone Is Down 2"±.  
Chiselled Hole On Top Of Stone.



O = LOCATION CORNER

T 19 N R 1 E

WISCONSIN

COUNTY SURVEYOR FORM NO. 1

**SURVEY CONTROL ORDER**

Horizontal	_____
Vertical	_____

**WISCONSIN COORDINATE SYSTEM**

Corner	East (X)	North (Y)	Elevation (Z)	Zone
Control Sta. Name				

[redacted] Town of Scott  
County of Monroe  
Wisconsin