

41901302000

I, Gary L. Dechant, do hereby certify that on the 15th day of March, 1994, I found (evidence) (~~no evidence~~) of the E/4 corner of Sec. 30, T 19 N, R 1 E Fourth Principal Meridian, and I re-established said corner according to the Wisconsin Statutes as shown and described hereon.

Dated this 4 day of APRIL 1994.

Gary L. Dechant
PLS 1744
Title

History of corner establishment since Original Government Survey

Bergman set an iron pipe here and marked two witness trees in an unrecorded survey of 1954.

Description of corner evidence found:

Could not find Bergman's iron pipe as other pipes he set at forty corners are missing. It was made known to me by Valley Corp Cranberry Marsh that one was washed out and others known to have been pulled out.

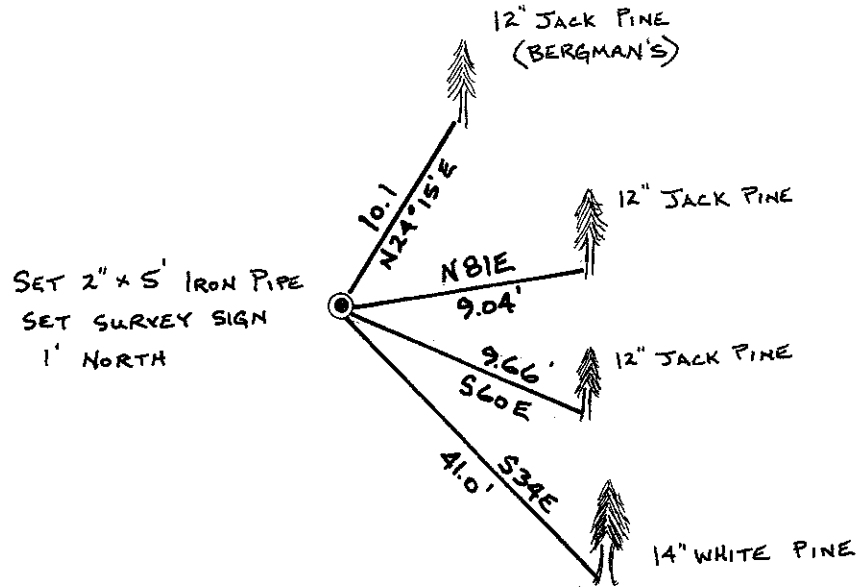
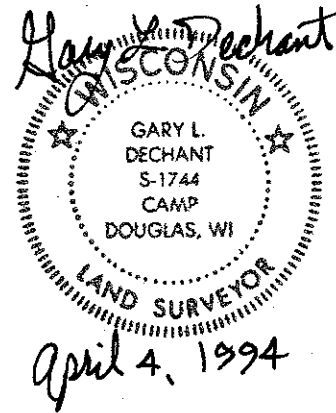
We did find one of his bearing trees, plainly marked, and reset it at his given bearing and distance. Fits other corners very well.

Description of corner and witness monuments, references and accessories used to perpetuate the original or re-established location of this corner:

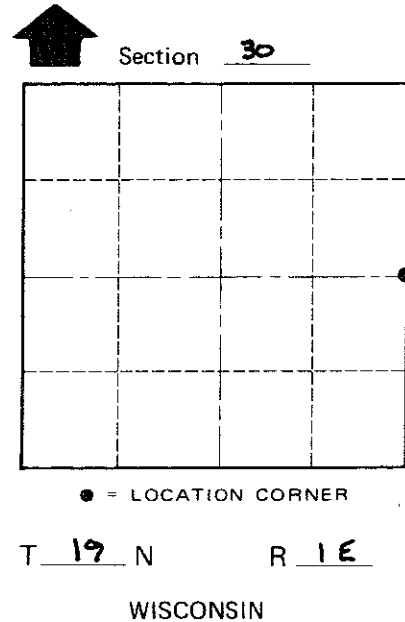
Witnesses to corner location:

David E. Madison

Gary L. Dechant



(Trees double blazed with 20d nail set)



COUNTY SURVEYOR FORM NO. 1

SURVEY CONTROL ORDER

Horizontal _____
Vertical _____

WISCONSIN COORDINATE SYSTEM

Corner	East (X)	North (Y)	Elevation (Z)	Zone
Control Sta. Name				

City, Village or Town SCOTT

County of MONROE