

105

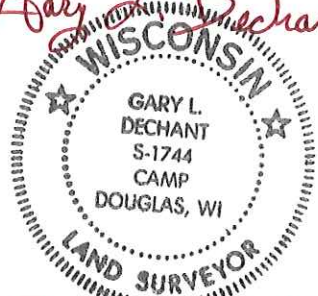
**U.S. PUBLIC LAND CORNER
MAINTENANCE**

**Corner ID : SE Sec.27, T19N-R1E
41901270000**

<u>DATE</u>	<u>CREW</u>	<u>MONUMENT TYPE</u> -----
December 6, 2014	Zachariah P. Dechant Gary L. Dechant	Harrison destroyed, reset with a 3/4"x3' square iron bar (top 1' cut as shear bar) in center line of dirt road. 72' east of ditch. Sign south side of road

References:

	<u>Bearing</u>	<u>Distance</u>
1) Existing Ford Axle	North	39.80 (39.83)'
2) Set 3/4"x24" iron bar, down 6", 6' south of 20" Black Oak	SE	85.00'
3) Set 3/4"x30" Frost Pin on top of ditch bank, 4' west of 10" Red Oak	South	57.77'
4) Set 3/4"x24" iron bar, 5' SE of 6" White Pine	NW	71.33'

Gary L. Dechant

October 29, 2015

I, William C. Jung, do hereby certify that on the fourth day of May 1982, I found evidence of the Northwest corner of Section 35, T19 N, R 1 E Fourth Principal Meridian, and I re-established said corner according to the Wisconsin Statutes as shown and described hereon.

Dated this seventh day of May 1982.

William C. Jung
Deputy County Surveyor
Title

History of corner establishment since Original Government Survey

According to the old Town Road Records, Henry Schroeder set a buggy axle at this corner on June 8, 1921. He set this corner 5280 feet West of the NE corner of Section 35. The centerline of the new East-West road was to be on the section line. He also placed a Ford axle 1 1/2 rods North of the corner.

Description of corner evidence found:

I set the corner in the centerline of the existing road and at a distance of 5280 feet from the NE corner of Section 35. The East-West road is very straight as shown by the 1/4 corner which is only 2.5 feet off line. This distance of 5280 fits the original notes within 0.66 feet. I could not find the buggy axle. I measured 1 1/2 rods to the North and found the Ford axle knocked out but close to what used to be its location. I feel that where I set my Harrison is either at or very close to Schroeder's old location.

See Reverse Side For Maintenance

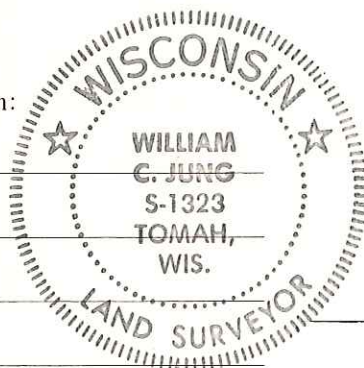
COUNTY SURVEYOR FORM NO. 1

Description of corner and witness monuments, references and accessories used to perpetuate the original or re-established location of this corner:

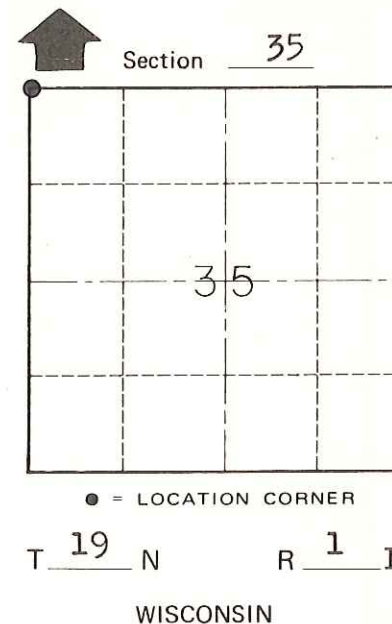
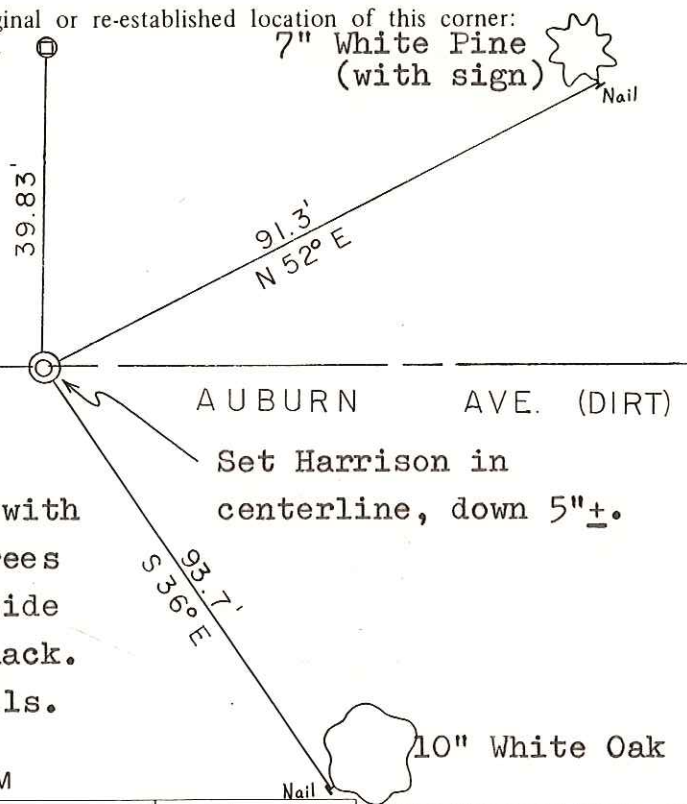
Set 1"x60" Ford axle, up 17".
7" White Pine (with sign) Nail

Witnesses to corner location:

William Jung
Bryan Meyer



Trees are double blazed with blazes facing corner. Trees are also hacked in the side with a nail set in the hack. Distances are to the nails.



Approved: **HARLEY A. SIME**
MONROE CO. SURVEYOR

SURVEY CONTROL ORDER

Horizontal	_____
Vertical	_____

WISCONSIN COORDINATE SYSTEM

Corner	East (X)	North (Y)	Elevation (Z)	Zone
Control Sta. Name				

City, Village or Town of Scott
County of Monroe