

99

**U.S. PUBLIC LAND CORNER
MAINTENANCE**

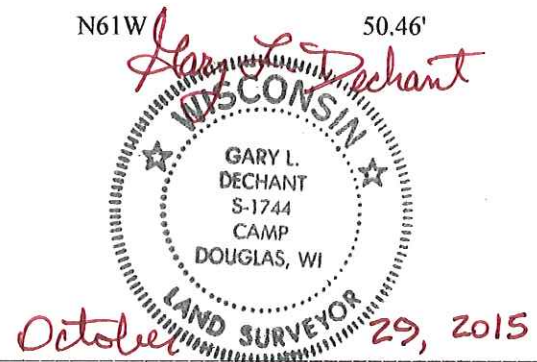
Corner ID : E1/4 Sec.26, T19N-R1E
41901262000

DATE	CREW	MONUMENT TYPE -----
March 19, 2015	Zachariah P. Dechant Gary L. Dechant	Existing Harrison with top broke off. Down 16". 2' west of traveled center line Crescent Road 25' north of road going east. 16" Norway (BT) OK

References:

	<u>Bearing</u>	<u>Distance</u>
1) Set 3/4"x24" iron bar, 20' south of power pole	N54E	111.54'
2) Set 3/4"x24" iron bar,	S61E	149.74'
3) Set 3/4"x24" iron bar, 3' NE of 8" White Oak	S54W	47.14'
4) Iron pipe reference marker destroyed, reset down 8"	West	29.91'
5) Set 3/4"x24" iron bar, down 6" 3' west of 8" White Pine	N61W	50.46'

Harrison & reference markers 1 & 3 and 2 & 5 set on straight lines.



I, William C. Jung, do hereby certify that on the 12th day of May 1982, I found ~~evidence~~ (no evidence) of the West 1/4 corner of Section 25, T 19 N, R 1 E Fourth Principal Meridian, and I re-established said corner according to the Wisconsin Statutes as shown and described hereon.

History of corner establishment since Original Government Survey

No history recorded since the original government survey.

Description of corner evidence found:

I set the corner on line and equidistant between the section corners.



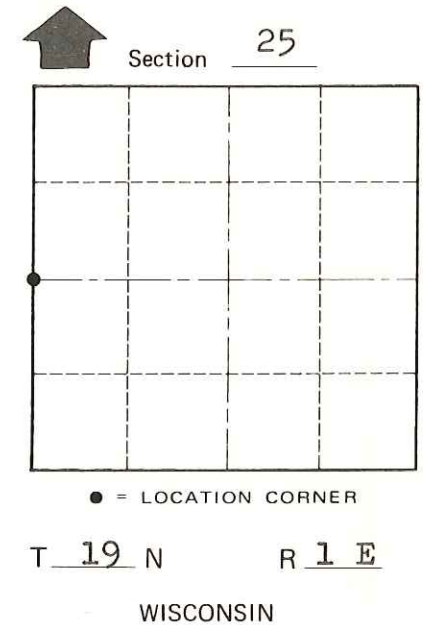
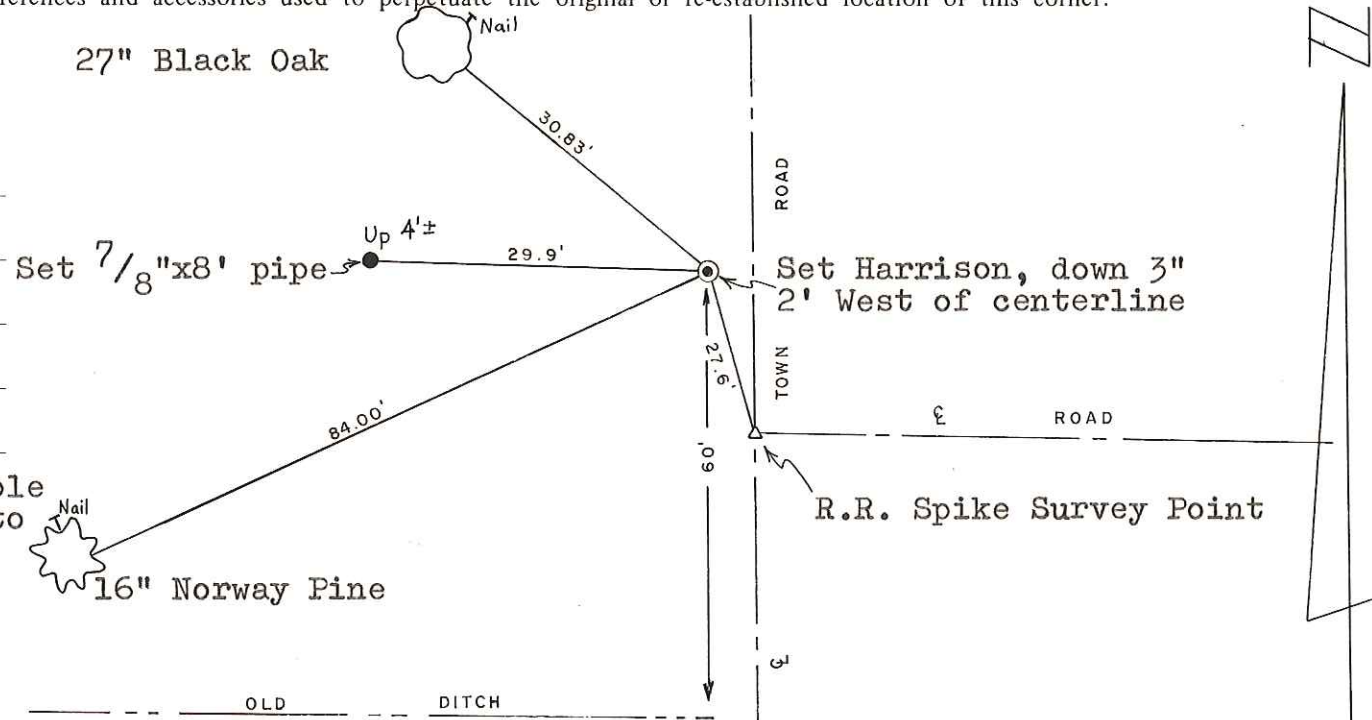
Dated this 21st day of Feb. 1983.
William C. Jung
Deputy County Surveyor
Title

Approved: **HARLEY A. SIME**
MONROE CO. SURVEYOR

See Reverse Side For Maintenance

COUNTY SURVEYOR FORM NO. 1

Description of corner and witness monuments, references and accessories used to perpetuate the original or re-established location of this corner:



Witnesses to corner location:

William Jung

Gary Dechant

Note: Both bearing trees are double blazed with each distance to a nail in a blaze on the side of the tree.

SURVEY CONTROL ORDER

Horizontal	_____
Vertical	_____

WISCONSIN COORDINATE SYSTEM

Corner	East (X)	North (Y)	Elevation (Z)	Zone
Control Sta. Name				

~~City, Village or~~ Town Scott
County of Monroe