

# 104

**U.S. PUBLIC LAND CORNER  
MAINTENANCE**

**Corner ID :** S1/4 Sec.26, T19N-R1E  
**41901260020**

<u>DATE</u>	<u>CREW</u>	<u>MONUMENT TYPE -----</u>
December 6, 2014	Zachariah P. Dechant Gary L. Dechant	Harrison, top broke off. Down 6". South side of dirt road.

References:

	<u>Bearing</u>	<u>Distance</u>
1) Set 3/4"x24" square iron bar 5' south of 8" White Pine	N26E	62.91'
2) Set 3/4"x24" square iron bar , 3' north of 8" Maple on south toe of bank	S50E	77.96'
3) Set 3/4"x24" square iron bar, 5' SW of 12" Ash on top of bank	S26W	45.65'
4) Set 3/4"x24" square iron bar, 5' NE of 15" Red Oak (BT)	N50W	72.26'

**Harrison and reference markers set on straight lines.**



I, William C. Jung, do hereby certify that on the fourth day of May 1982, I found ~~evidence~~ (no evidence) of the North 1/4 corner of Section 35, T19 N, R1 E Fourth Principal Meridian, and I re-established said corner according to the Wisconsin Statutes as shown and described hereon.

Dated this seventh day of May 1982.

William C. Jung  
Deputy County Surveyor  
Title

History of corner establishment since Original Government Survey

Henry Schroeder set a stake at this corner on June 8, 1921, as recorded in the old Town Road Records.

Description of corner evidence found:

I could not find an existing marker. I set the corner on line and equidistant between the section corners

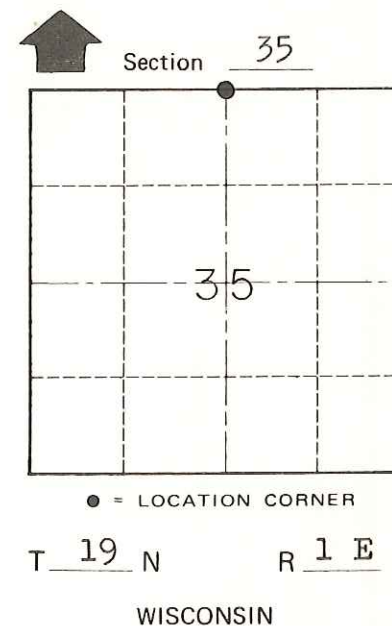
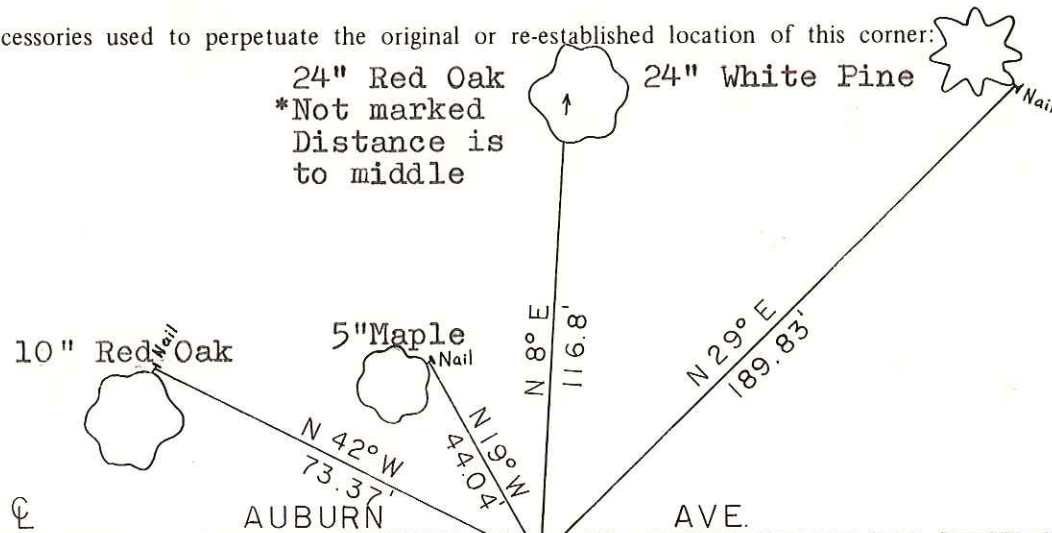
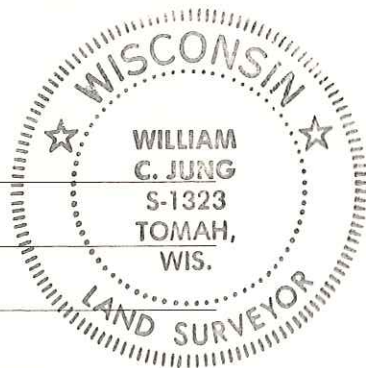
**See Reverse Side For Maintenance**

COUNTY SURVEYOR FORM NO. 1

Description of corner and witness monuments, references and accessories used to perpetuate the original or re-established location of this corner:

Witnesses to corner location:

William C. Jung  
Bryan Meyer



Approved: **HARLEY A. SIME**  
**MONROE CO. SURVEYOR**

SURVEY CONTROL ORDER

Horizontal	_____
Vertical	_____

Trees are double blazed with blazes facing corner. Trees are also hacked in the side with a nail set in the hack,\* unless otherwise noted. Distances are to nails.

WISCONSIN COORDINATE SYSTEM

Corner	East (X)	North (Y)	Elevation (Z)	Zone
Control Sta. Name				

~~City, Village or~~ Town of Scott  
County of Monroe