

CERTIFIED LAND CORNER

No. 3

CERTIFICATE

I, Bryan H. Meyer, do hereby certify that on the 13th day of November, 2002, I found (evidence) ~~(no evidence)~~ of the Northeast corner of Section 2, T 18 N, R 1 E Fourth principle Meridian, and I re-established said corner according to the Wisconsin Statutes as shown and described hereon.

Dated this 20th day of February, 2008

Bryan H. Meyer
Registered Land Surveyor

Description of corner and witness monuments, references and accessories used to perpetuate the original or re-established location of this corner.

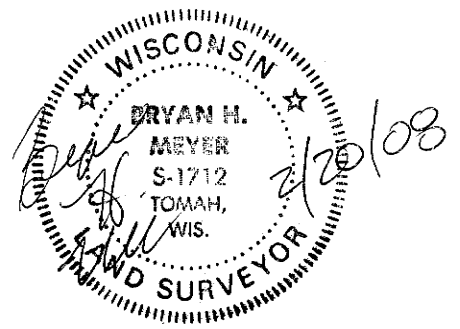
Witnesses to corner location:
Bryan Meyer
Rick Reisinger

History of corner establishment since Original Government Survey

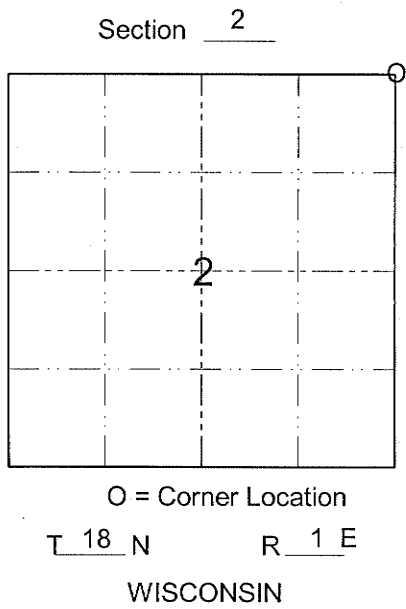
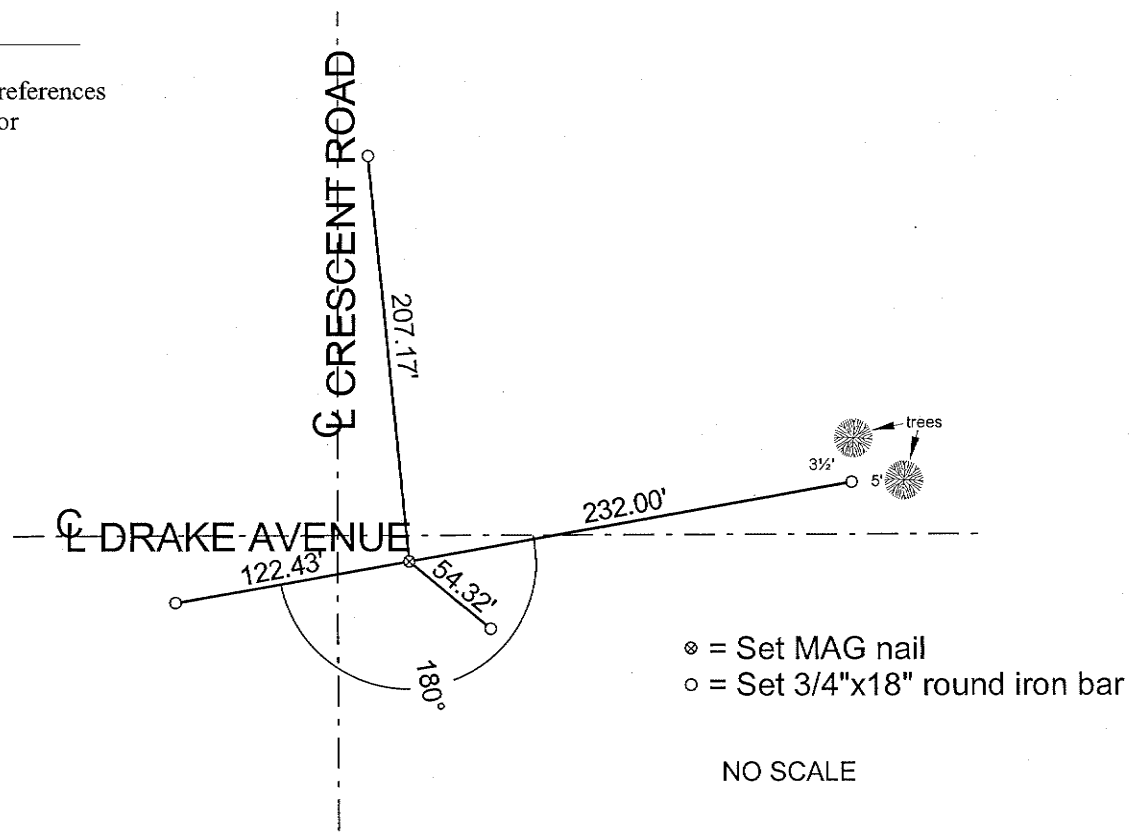
Kennedy's notes from the 1930s shows this corner being in the road. Doug Malliet found an iron pipe at this corner location in April of 1977. Bryan Meyer used this corner location in his October 1989 survey. James Carroll utilized this corner location in his June 1994 survey. Gary Dechant was here in April of 2005.

UPDATE:

The County Surveyor's Office was notified by the Town of Byron that a road resurfacing project was to take place. This corner was referenced out. Following resurfacing, this corner was reset with a MAG nail and new ties were taken as shown.



Bryan H. Meyer, Registered Land Surveyor
H. A. Sime and Associates, P. O. Box 50,
Tomah, Wisconsin 54660 * 608-372-5392



SURVEY CONTROL ORDER

Horizontal				
Vertical				
Corner 41901350000	Northing	Easting	Elevation	
Control Station Name				

~~City, Village or~~ Town of Byron
County of Monroe