

#8

**U.S. PUBLIC LAND CORNER
MAINTENANCE**

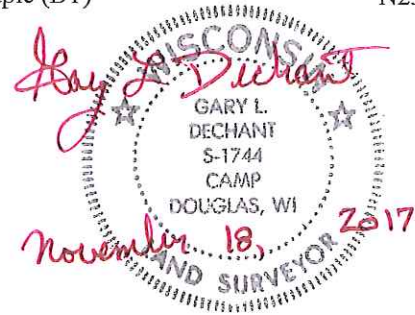
Corner ID : S1/4 Sec. 33, T19N-R1E

41901330020

<u>DATE</u>	<u>CREW</u>	<u>MONUMENT TYPE</u> -----
October 12, 2017	Zachariah P.Dechant Gary L. Dechant	Existing 2" stamped and Capped iron pipe, up 2' 175' south of DNR gate on roadway Set sign 2' north

References:

	<u>Bearing</u>	<u>Distance</u>
1) Set 3/4"x24" round iron bar	North	40.85'
2) Set 3/4"x24" round iron bar	S72E	23.85'
3) Set 3/4"x24" round iron bar	S20W	20.60'
4) Set 3/4"x24" round iron bar, 4' west of Maple (BT)	N23W	23.47'



I, Harley A. Sime, do hereby certify that on the third day of June 1980 I found (evidence) ~~(no evidence)~~ of the North 1/4 corner of Section 4, T18 N, R1 E Fourth Principal Meridian, and I re-established said corner according to the Wisconsin Statutes as shown and described hereon.

Dated this 26th day of Feb. 1981.

Harley A. Sime - R.L.S. 355

County Surveyor-Monroe County, Wisconsin
Title

History of corner establishment since Original Government Survey

Holden was at this corner in September of 1909. In his survey notes of the 1930's, Kennedy shows the corner as being 11" North of the pipe.

Description of corner evidence found:

Found Kennedy's pipe located 11" South of the corner.

See Reverse Side For Maintenance

COUNTY SURVEYOR FORM NO. 1

Description of corner and witness monuments, references and accessories used to perpetuate the original or re-established location of this corner:

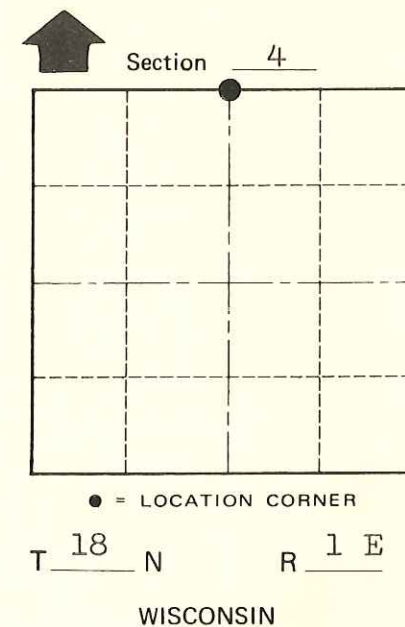
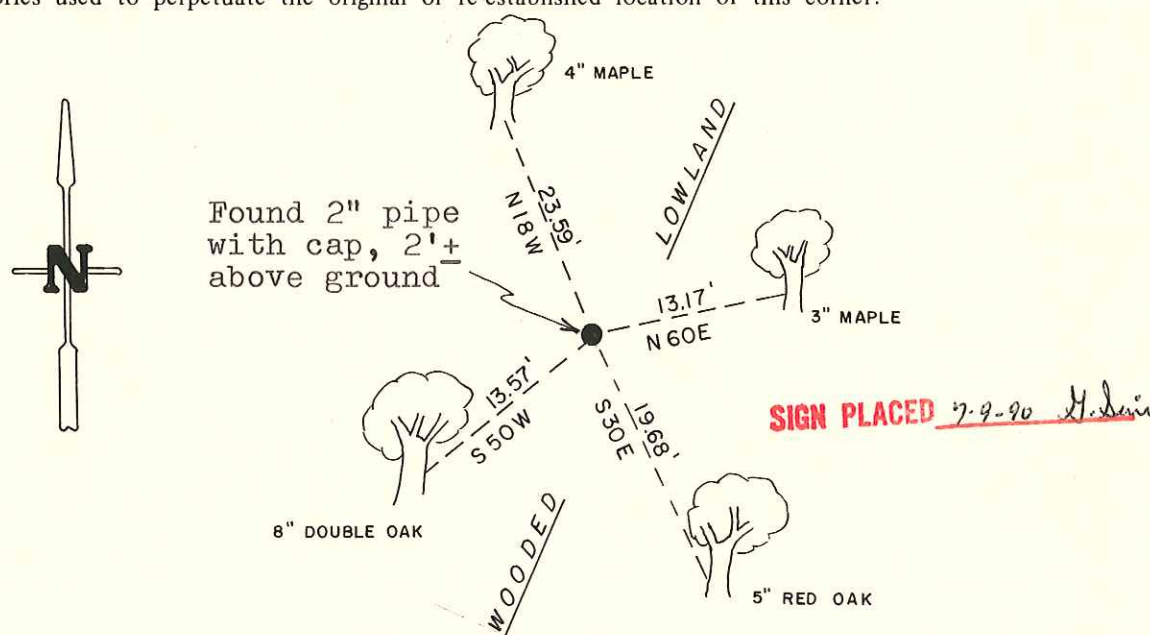
Witnesses to corner location:

Scott Sowers

Todd Tormoen

Charles Dade

**Approved: HARLEY A. SIME
MONROE CO. SURVEYOR**



SURVEY CONTROL ORDER

Horizontal	_____
Vertical	_____

(All trees double blazed with N&C's set)

WISCONSIN COORDINATE SYSTEM

Corner	East (X)	North (Y)	Elevation (Z)	Zone
Control Sta. Name				

~~City, Village or~~ Town Byron
County of Monroe
Wisconsin