

#7

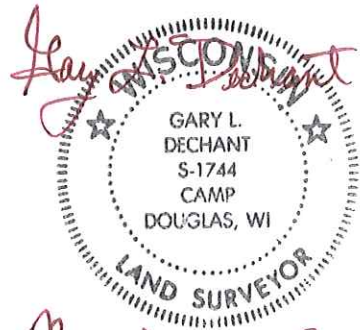
**U.S. PUBLIC LAND CORNER  
MAINTENANCE**

**Corner ID : SE Sec. 33, T19N-R1E  
41901330000**

| <u>DATE</u>      | <u>CREW</u>                            | <u>MONUMENT TYPE -----</u>  |
|------------------|--|---|
| October 12, 2017 | Zachariah P.Dechant<br>Gary L. Dechant | Existing 2" Capped iron pipe, up 2'. Set sign 2' NW<br>54' south of roadway, Between drainage ditches.<br>45' west of drainage ditch and 70' east of drainage ditch |

References:

|  | <u>Bearing</u> | <u>Distance</u> |
|--|----------------|-----------------|
| 1) Set 3/4"x24" round iron bar, down 6", 6' SW of 14" White Pine | N50E           | 12.00'          |
| 2) Set 3/4"x24" round iron bar, down 6", 4' SE of 12" Red Oak    | S35W           | 25.10'          |
| 3) Set 3/4"x24" round iron bar, down 6"                          | S64W           | 23.83'          |
| 4) Set 3/4"x24" round iron bar, down 6",                         | N49W           | 22.23'          |



*November 18, 2017*

I, Harley A. Sime, do hereby certify that on the third day of June 1980, I found (evidence) ~~(no evidence)~~ of the Northwest corner of Section 3, T 18 N, R 1 E Fourth Principal Meridian, and I re-established said corner according to the Wisconsin Statutes as shown and described hereon.

Dated this 26th day of Feb. 1981.

Harley A. Sime - R.L.S. 355

County Surveyor-Monroe County, Wisconsin  
Title

History of corner establishment since Original Government Survey

Holden was at this corner in September of 1909. In his survey during the 1930's, Kennedy set this corner.

Description of corner evidence found:

Found Kennedy's pipe.

**See Reverse Side For Maintenance**

COUNTY SURVEYOR FORM NO. 1

Description of corner and witness monuments, references and accessories used to perpetuate the original or re-established location of this corner:

Witnesses to corner location:

Scott Sowers

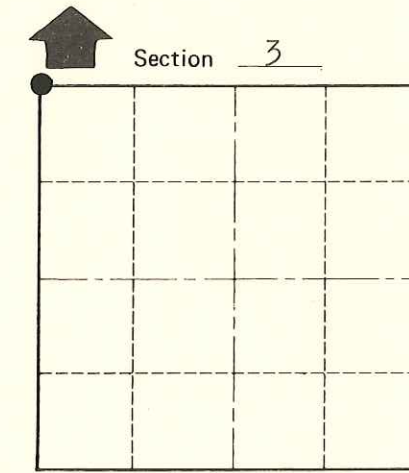
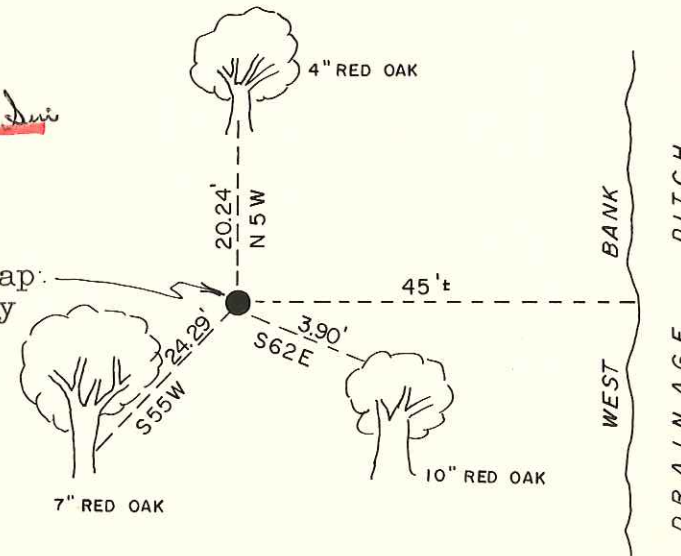
Todd Tormoen

Chuck Dade



**SIGN PLACED** 7-9-80 H. Sime

Found 2" pipe with cap up 24". Near Dandy Creek dam.



T 18 N R 1 E  
WISCONSIN

**Approved: HARLEY A. SIME**  
**MONROE CO. SURVEYOR**

(All trees are double blazed with a nail and cap set in each.)

SURVEY CONTROL ORDER

Horizontal \_\_\_\_\_

Vertical \_\_\_\_\_

WISCONSIN COORDINATE SYSTEM

| Corner            | East (X) | North (Y) | Elevation (Z) | Zone |
|-------------------|----------|-----------|---------------|------|
| Control Sta. Name |          |           |               |      |

City, Village or Town of Byron

County of Monroe

Wisconsin