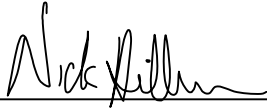


CERTIFICATE

I, Nicholas M. Hillmer, do hereby certify that this document and the data contained herein was prepared by me or under my direct supervision and that I am a duly Licensed Land Surveyor under the laws of the State of Wisconsin.

Dated this 21st day of May, 2013



Nicholas M. Hillmer, P.L.S. 2909
Anderson Engineering of Minnesota, LLC.

CERTIFIED LAND CORNER

History of corner established since Original Government Survey

Harley Sime found a pipe and stone at this corner in November of 1965. The stone also appears in the Fort McCoy notes of 1945. In March of 1981 William Jung found and accepted the stone as the corner. Jung also set a 4 inch square wooden post with a sign.

No. 21803040000

Description of evidence found

On August 10th, 2012, Anderson Engineering of Minnesota located the stone and 2 1/4 inch iron pipe. The pipe sticks up 14 inches above grade. A 4 inch square wooden post is 0.45 feet northwest of the high point of the stone. A north south fence line runs over the top of the stone.

Description of corner and witness monuments, references and accessories used to perpetuate the original or re-established location of this corner:

Witnesses to corner location:

Nick Hillmer
Josh Oslund
Dan Greenwald



MONROE COUNTY
COORDINATE SYSTEM
NAD 1983 (2007)

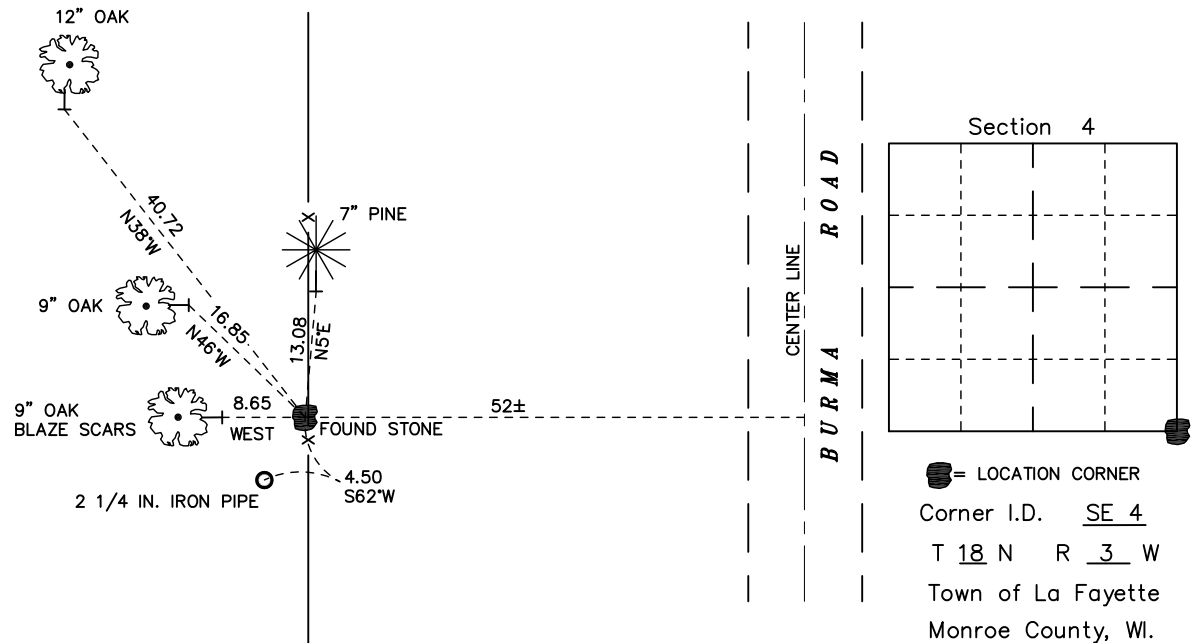
STONE

Northing (Y) 421303.74
Easting (X) 646909.76

Base Station - 22 182W

Northing (Y) 408053.25
Easting (X) 679287.00

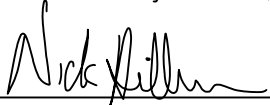
All distances are shown in U.S. Survey Feet.
Ties are to 60D nails set in trees.
Bearings are for tie reference purposes only.
Coordinates were derived from RTK GNSS procedures.



CERTIFICATE

I, Nicholas M. Hillmer, do hereby certify that this document and the data contained herein was prepared by me or under my direct supervision and that I am a duly Licensed Land Surveyor under the laws of the State of Wisconsin.

Dated this 10th day of June, 2013



Nicholas M. Hillmer, P.L.S. 2909
Anderson Engineering of Minnesota, LLC.

CERTIFIED LAND CORNER

History of corner established since Original Government Survey

Harley Sime found an axle at this corner in November 1965. Larry Feddersen found and used this axle in March of 1977. William Jung found the axle and replaced it with a Harrison monument in August of 1981.

No. 21803050000

Description of evidence found

On February 27th, 2013, Anderson Engineering of Minnesota located the Harrison monument 0.1 feet above grade and 1.5 feet west of the fence line.

Description of corner and witness monuments, references and accessories used to perpetuate the original or re-established location of this corner:

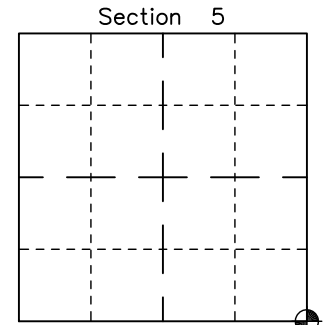
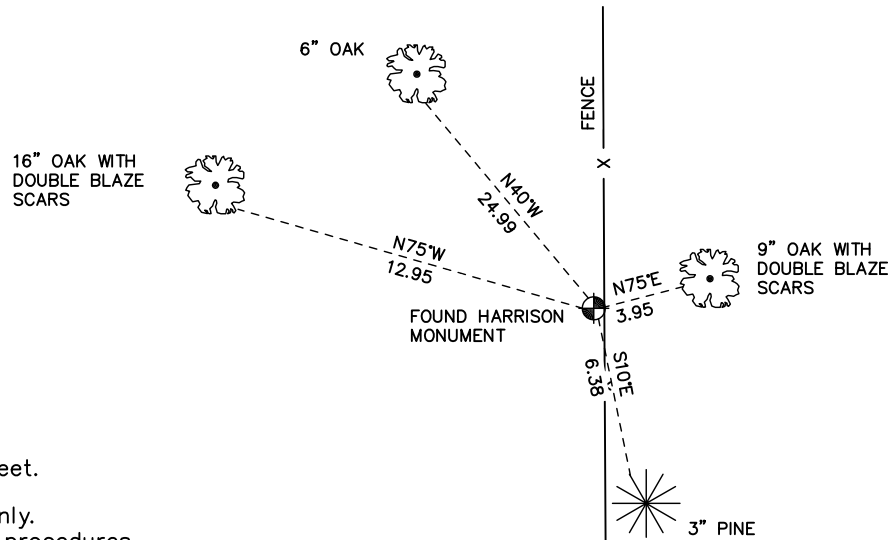
Witnesses to corner location:

Nick Hillmer
Josh Oslund
Dan Greenwald

MONROE COUNTY
COORDINATE SYSTEM
NAD 1983 (2007)

HARRISON MONUMENT
Northing (Y) 421392.07
Easting (X) 641610.86

Base Station - 22 182W
Northing (Y) 408053.25
Easting (X) 679287.00



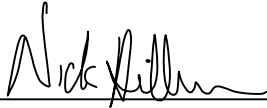
☉ = LOCATION CORNER
Corner I.D. SE 5
T 18 N R 3 W
Town of La Fayette
Monroe County, WI.

All distances are shown in U.S. Survey Feet.
Ties are to 60D nails set in trees.
Bearings are for tie reference purposes only.
Coordinates were derived from RTK GNSS procedures.

CERTIFICATE

I, Nicholas M. Hillmer, do hereby certify that this document and the data contained herein was prepared by me or under my direct supervision and that I am a duly Licensed Land Surveyor under the laws of the State of Wisconsin.

Dated this 21st day of May, 2013



Nicholas M. Hillmer, P.L.S. 2909
Anderson Engineering of Minnesota, LLC.

CERTIFIED LAND CORNER

History of corner established since Original Government Survey

Harley Sime was at this corner in October of 1959. In June of 1981, William Jung did not find a monument at this location. Jung set a 8 foot by 2 3/4 inch iron pipe on line between the section corners at a distance between them proportionate to the original notes.

Description of evidence found

On February 27th, 2013, Anderson Engineering of Minnesota located the 2 3/4 inch pipe that rises 3.3 feet above the marshy ground.

No. 21803052000

Description of corner and witness monuments, references and accessories used to perpetuate the original or re-established location of this corner:

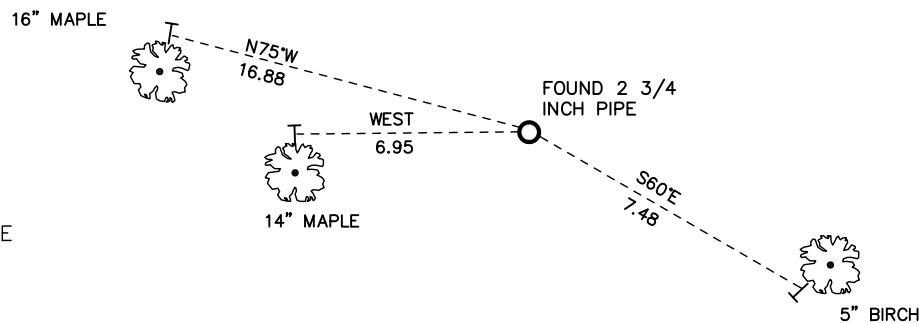
Witnesses to corner location:

Nick Hillmer
Josh Oslund
Dan Greenwald

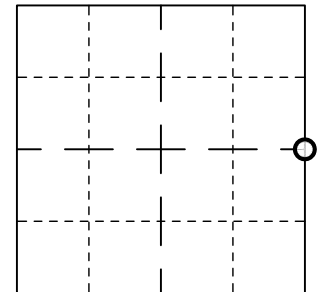
MONROE COUNTY
COORDINATE SYSTEM
NAD 1983 (2007)

2 3/4 INCH PIPE
Northing (Y) 424029.00
Easting (X) 641678.16

Base Station - 22 182W
Northing (Y) 408053.25
Easting (X) 679287.00



Section 5



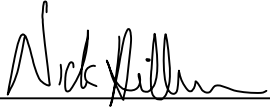
○ = LOCATION CORNER
Corner I.D. E 1/4 5
T 18 N R 3 W
Town of La Fayette
Monroe County, WI.

All distances are shown in U.S. Survey Feet.
Ties are to 60D nails set in trees.
Bearings are for tie reference purposes only.
Coordinates were derived from RTK GNSS procedures.

CERTIFICATE

I, Nicholas M. Hillmer, do hereby certify that this document and the data contained herein was prepared by me or under my direct supervision and that I am a duly Licensed Land Surveyor under the laws of the State of Wisconsin.

Dated this 21st day of May, 2013



Nicholas M. Hillmer, P.L.S. 2909
Anderson Engineering of Minnesota, LLC.

CERTIFIED LAND CORNER

History of corner established since Original Government Survey

Lawrence Feddersen found a 7/8 inch square bar beside a large flat stone with no known history. Feddersen accepted the bar as the corner and replaced it with a Harrison monument in September of 1978.

Description of evidence found

On February 27th, 2013, Anderson Engineering of Minnesota located the Harrison monument flush with the ground and 1.5 feet north of a downed fence line.

No. 21803080000

Description of corner and witness monuments, references and accessories used to perpetuate the original or re-established location of this corner:

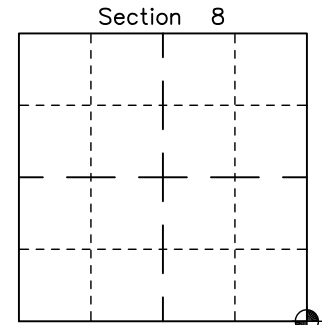
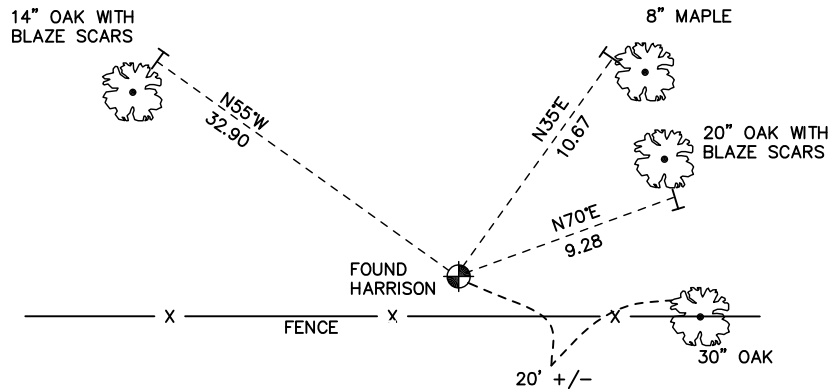
Witnesses to corner location:

Nick Hillmer
Josh Oslund
Dan Greenwald

MONROE COUNTY
COORDINATE SYSTEM
NAD 1983 (2007)

HARRISON MONUMENT
Northing (Y) 416140.02
Easting (X) 641682.37

Base Station - 22 182W
Northing (Y) 408053.25
Easting (X) 679287.00



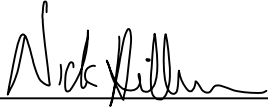
☉ = LOCATION CORNER
Corner I.D. SE 8
T 18 N R 3 W
Town of La Fayette
Monroe County, WI.

All distances are shown in U.S. Survey Feet.
Ties are to 60D nails set in trees.
Bearings are for tie reference purposes only.
Coordinates were derived from RTK GNSS procedures.

CERTIFICATE

I, Nicholas M. Hillmer, do hereby certify that this document and the data contained herein was prepared by me or under my direct supervision and that I am a duly Licensed Land Surveyor under the laws of the State of Wisconsin.

Dated this 21st day of May, 2013



Nicholas M. Hillmer, P.L.S. 2909
Anderson Engineering of Minnesota, LLC.

CERTIFIED LAND CORNER

History of corner established since Original Government Survey

The 1940's McCoy boundary notes show a corner at this location. Feddersen set a 1 inch pipe next to a stone in 1977. William Jung found the stone and pipe in 1982. William Bulawa did not find the stone or pipe due to logging in the area. In 2004 Bulawa set the corner from Jung's notes and old surveys in the area.

No. 21803090000

Description of evidence found

On March 13th, 2013, Anderson Engineering of Minnesota located the Harrison monument in a valley swale. A 4 inch square wood post is 0.8 feet north and a witness post with survey marker sign is 0.95 feet south of the monument.

Description of corner and witness monuments, references and accessories used to perpetuate the original or re-established location of this corner:

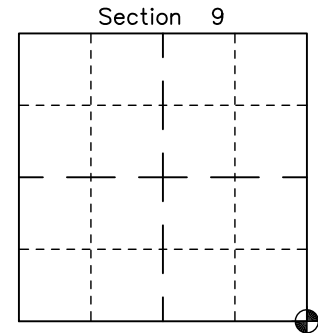
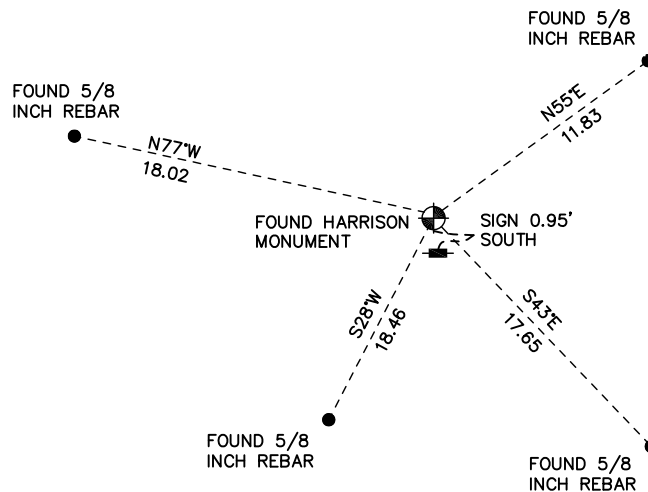
Witnesses to corner location:

Nick Hillmer
Josh Oslund
Dan Greenwald

MONROE COUNTY
COORDINATE SYSTEM
NAD 1983 (2007)

HARRISON MONUMENT
Northing (Y) 415994.64
Easting (X) 647112.01

Base Station - 22 182W
Northing (Y) 408053.25
Easting (X) 679287.00



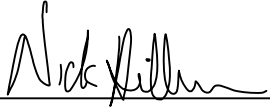
⊕ = LOCATION CORNER
Corner I.D. SE 9
T 18 N R 3 W
Town of La Fayette
Monroe County, WI.

All distances are shown in U.S. Survey Feet.
Bearings are for tie reference purposes only.
Coordinates were derived from RTK GNSS procedures.

CERTIFICATE

I, Nicholas M. Hillmer, do hereby certify that this document and the data contained herein was prepared by me or under my direct supervision and that I am a duly Licensed Land Surveyor under the laws of the State of Wisconsin.

Dated this 21st day of May, 2013



Nicholas M. Hillmer, P.L.S. 2909
Anderson Engineering of Minnesota, LLC.

CERTIFIED LAND CORNER

History of corner established since Original Government Survey

William Bulawa found an old fence and earth berm running north and south at the corner location. Bulawa held old fence for east-west and set a Harrison monument at equal distance between the northeast corner and southeast corner of Section 9.

No. 21803092000

Description of evidence found

On March 13th, 2013, Anderson Engineering of Minnesota located the Harrison monument 0.85 feet east of a witness post with a survey marker sign. Remains of a north-south fence run over the monument.

Description of corner and witness monuments, references and accessories used to perpetuate the original or re-established location of this corner:

Witnesses to corner location:

Nick Hillmer
Josh Oslund
Dan Greenwald

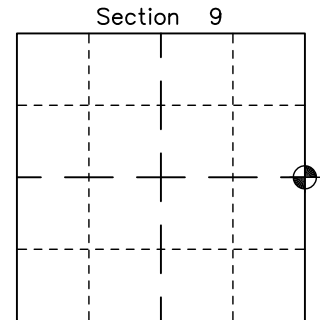
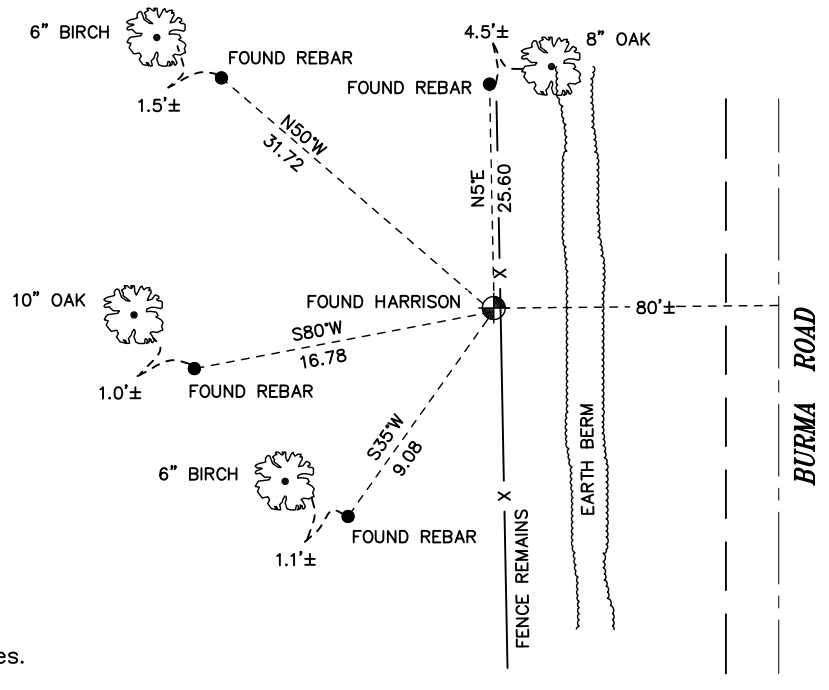
MONROE COUNTY
COORDINATE SYSTEM
NAD 1983 (2007)

HARRISON MONUMENT
Northing (Y) 418649.23
Easting (X) 647008.75

Base Station - 22 182W
Northing (Y) 408053.25
Easting (X) 679287.00



All distances are shown in U.S. Survey Feet.
Bearings are for tie reference purposes only.
Coordinates were derived from RTK GNSS procedures.

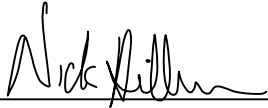


● = LOCATION CORNER
Corner I.D. E 1/4 9
T 18 N R 3 W
Town of La Fayette
Monroe County, WI.

CERTIFICATE

I, Nicholas M. Hillmer, do hereby certify that this document and the data contained herein was prepared by me or under my direct supervision and that I am a duly Licensed Land Surveyor under the laws of the State of Wisconsin.

Dated this 21st day of May, 2013



Nicholas M. Hillmer, P.L.S. 2909
Anderson Engineering of Minnesota, LLC.

CERTIFIED LAND CORNER

History of corner established since Original Government Survey

Lawrence Feddersen re-established this corner with a Harrison monument set midway and on line in between the southwest corner and the southeast corners of Section 16.

No. 21803160020

Description of evidence found

On February 27th, 2013, Anderson Engineering of Minnesota located the Harrison monument 0.8 feet below grade in a cultivated field.

Description of corner and witness monuments, references and accessories used to perpetuate the original or re-established location of this corner:

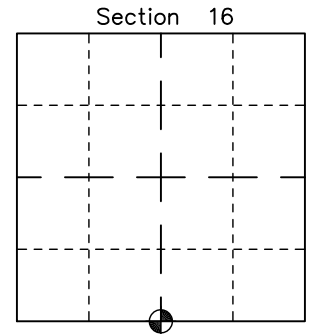
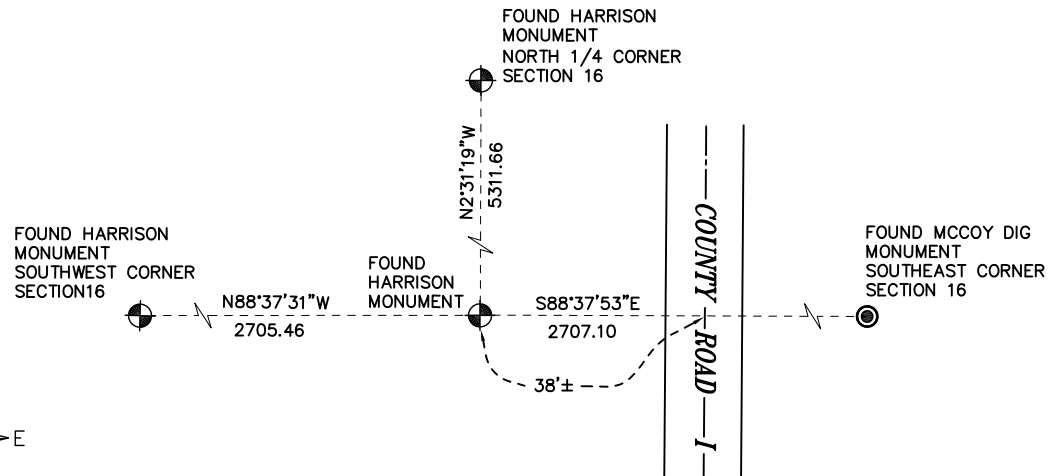
Witnesses to corner location:

Nick Hillmer
Josh Oslund
Dan Greenwald

MONROE COUNTY
COORDINATE SYSTEM
NAD 1983 (2007)

HARRISON MONUMENT
Northing (Y) 410760.14
Easting (X) 644630.85

Base Station - 22 182W
Northing (Y) 408053.25
Easting (X) 679287.00



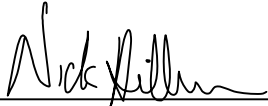
⊕ = LOCATION CORNER
 Corner I.D. S 1/4 16
T 18 N R 3 W
 Town of La Fayette
 Monroe County, WI.

All distances are shown in U.S. Survey Feet.
 Bearings are for tie reference purposes only.
 Coordinates were derived from RTK GNSS procedures.

CERTIFICATE

I, Nicholas M. Hillmer, do hereby certify that this document and the data contained herein was prepared by me or under my direct supervision and that I am a duly Licensed Land Surveyor under the laws of the State of Wisconsin.

Dated this 30th day of May, 2013



Nicholas M. Hillmer, P.L.S. 2909
Anderson Engineering of Minnesota, LLC.

CERTIFIED LAND CORNER

History of corner established since Original Government Survey

In August of 1978 Lawrence Feddersen computed a bearing between the northwest corner of Section 20 and the intersection point of the centerline of the town road and the easterly extension of a fence to the West, all were in the proximity of the northeast corner of Section 20. Feddersen decided to set the Harrison monument at the record bearing and the record Government distance from the northwest corner of Section 20.

No. 21803170000

Description of evidence found

On February 27th, 2013 Anderson Engineering of Minnesota recovered the Harrison monument with the top broke off 1.0 foot below the ground surface. The monument is 1.7 feet north of a survey marker sign in a fence line.

Description of corner and witness monuments, references and accessories used to perpetuate the original or re-established location of this corner:

Witnesses to corner location:

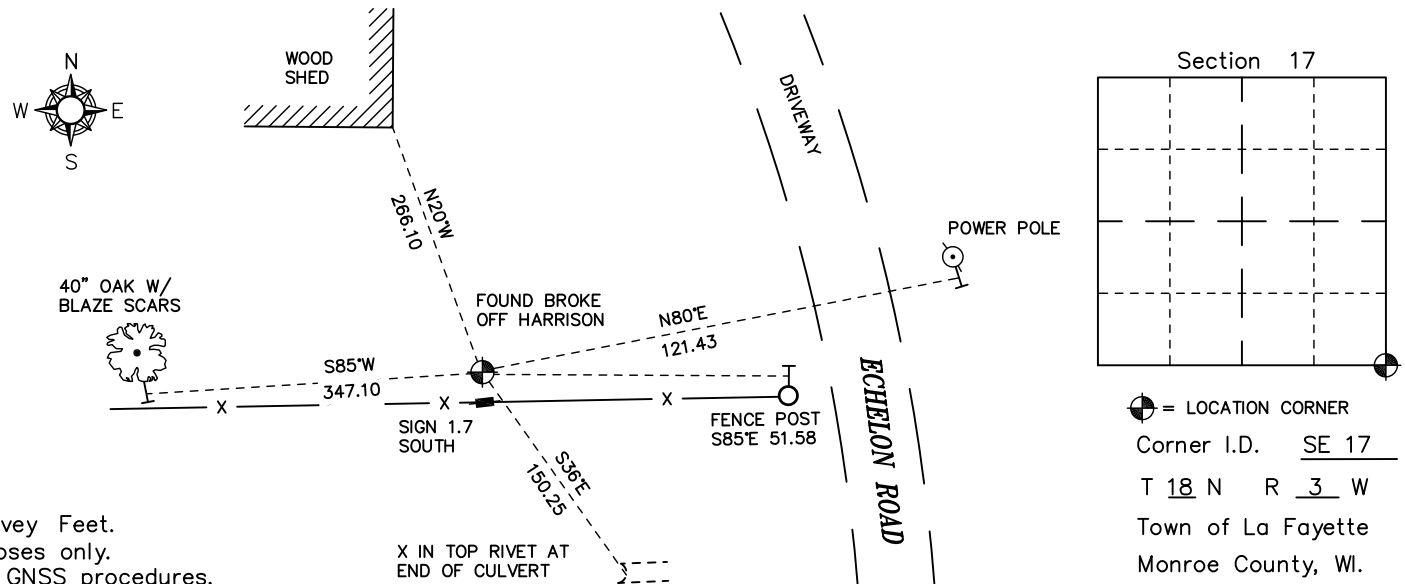
Nick Hillmer
Josh Oslund
Dan Greenwald

MONROE COUNTY
COORDINATE SYSTEM
NAD 1983 (2007)

HARRISON MONUMENT
Northing (Y) 410825.04
Easting (X) 641926.17

Base Station - 22 182W
Northing (Y) 408053.25
Easting (X) 679287.00

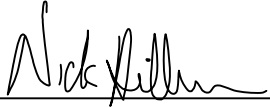
All distances are shown in U.S. Survey Feet.
Bearings are for tie reference purposes only.
Coordinates were derived from RTK GNSS procedures.



CERTIFICATE

I, Nicholas M. Hillmer, do hereby certify that this document and the data contained herein was prepared by me or under my direct supervision and that I am a duly Licensed Land Surveyor under the laws of the State of Wisconsin.

Dated this 21st day of May, 2013



Nicholas M. Hillmer, P.L.S. 2909
Anderson Engineering of Minnesota, LLC.

CERTIFIED LAND CORNER

No. 21803172000

History of corner established since Original Government Survey

In September of 1978 Lawrence Feddersen re-established this corner with a Harrison monument set midway and online between section corners after finding no known history. Feddersen notes that the fences in the area of this corner are erratic in nature and therefore unreliable.

Description of evidence found

On February 27th, 2013, Anderson Engineering of Minnesota located the Harrison monument 0.2 feet above grade. The land in the area slopes westerly.

Description of corner and witness monuments, references and accessories used to perpetuate the original or re-established location of this corner:

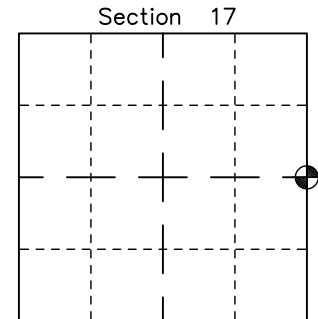
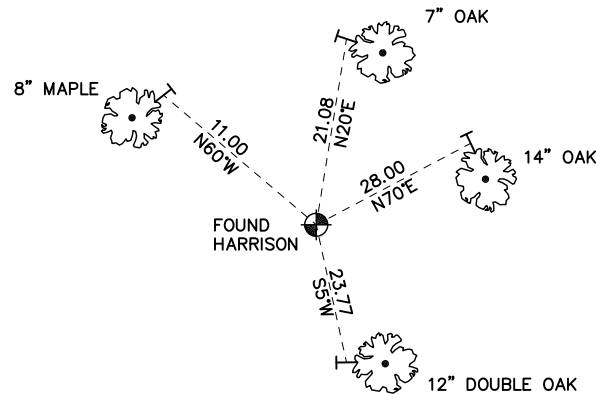
Witnesses to corner location:

Nick Hillmer
Josh Oslund
Dan Greenwald

MONROE COUNTY
COORDINATE SYSTEM
NAD 1983 (2007)

HARRISON MONUMENT
Northing (Y) 413482.56
Easting (X) 641804.00

Base Station - 22 182W
Northing (Y) 408053.25
Easting (X) 679287.00



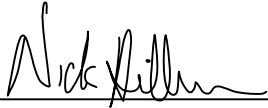
● = LOCATION CORNER
Corner I.D. E 1/4 17
T 18 N R 3 W
Town of La Fayette
Monroe County, WI.

All distances are shown in U.S. Survey Feet.
Ties are to 60D nails set in trees.
Bearings are for tie reference purposes only.
Coordinates were derived from RTK GNSS procedures.

CERTIFICATE

I, Nicholas M. Hillmer, do hereby certify that this document and the data contained herein was prepared by me or under my direct supervision and that I am a duly Licensed Land Surveyor under the laws of the State of Wisconsin.

Dated this 21st day of May, 2013



Nicholas M. Hillmer, P.L.S. 2909
Anderson Engineering of Minnesota, LLC.

CERTIFIED LAND CORNER

History of corner established since Original Government Survey

In November of 1902 Fred Holden shows a stone at this corner. In November of 1957 Lenschow shows an iron pipe at the corner. Feddersen found an iron pipe at this corner in March of 1977 and December of 1982. In December of 1982 William Jung found the iron pipe and replaced it with a Harrison monument.

Description of evidence found

On January 23rd, 2013, Anderson Engineering of Minnesota located the Harrison monument with the top missing 2 feet below a mound of dirt and 0.4 foot west of a witness post with survey marker sign.

No. 21803200000

Description of corner and witness monuments, references and accessories used to perpetuate the original or re-established location of this corner:

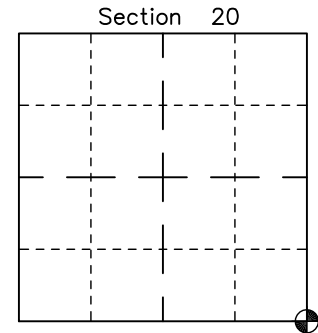
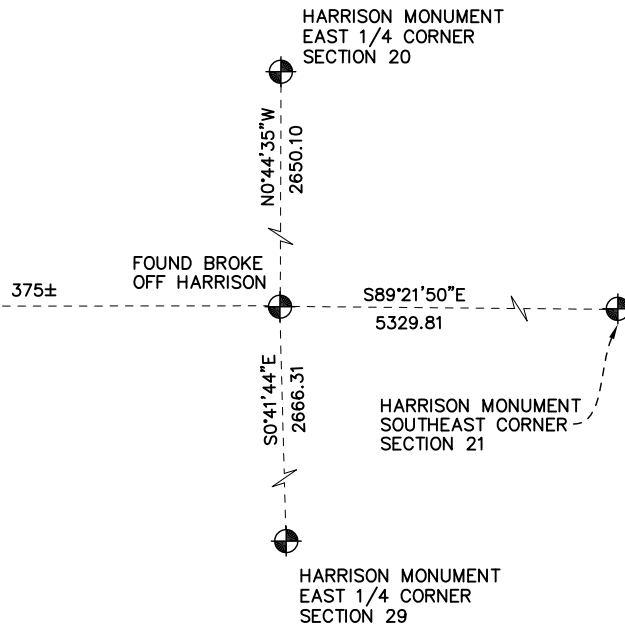
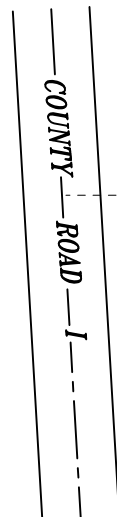
Witnesses to corner location:

Nick Hillmer
Josh Oslund
Dan Greenwald

MONROE COUNTY
COORDINATE SYSTEM
NAD 1983 (2007)

HARRISON MONUMENT
Northing (Y) 405492.98
Easting (X) 641975.88

Base Station - 22 182W
Northing (Y) 408053.25
Easting (X) 679287.00



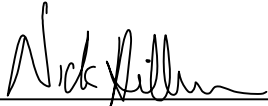
☉ = LOCATION CORNER
Corner I.D. SE 20
T 18 N R 3 W
Town of La Fayette
Monroe County, WI.

All distances are shown in U.S. Survey Feet.
Bearings are for tie reference purposes only.
Coordinates were derived from RTK GNSS procedures.

CERTIFICATE

I, Nicholas M. Hillmer, do hereby certify that this document and the data contained herein was prepared by me or under my direct supervision and that I am a duly Licensed Land Surveyor under the laws of the State of Wisconsin.

Dated this 21st day of May, 2013



Nicholas M. Hillmer, P.L.S. 2909
Anderson Engineering of Minnesota, LLC.

CERTIFIED LAND CORNER

History of corner established since Original Government Survey

Fred Holden found a stone at this corner in 1910. In 1957 Lenschow set an iron pipe at this corner. In 1978 Feddersen found no evidence of the stone or pipe. Feddersen found Lenschow's iron pipes of record at the southeast corner and the S1/16-SE corner of Section 20. Feddersen re-established the corner location by extending the line north and doubling the distance between the monument.

Description of evidence found

On February 27th, 2013 Anderson Engineering of Minnesota recovered a broke off Harrison monument sloping westerly 0.2 feet above grade.

No. 21803202000

Description of corner and witness monuments, references and accessories used to perpetuate the original or re-established location of this corner:

Witnesses to corner location:

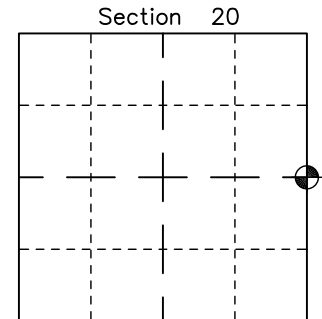
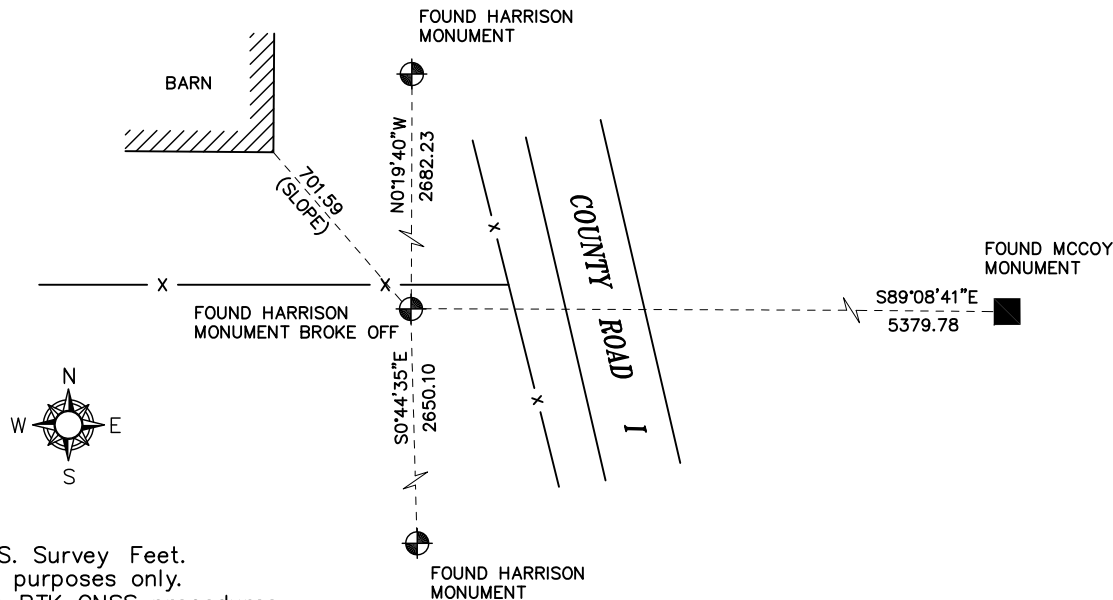
Nick Hillmer
Josh Oslund
Dan Greenwald

MONROE COUNTY
COORDINATE SYSTEM
NAD 1983 (2007)

HARRISON MONUMENT
Northing (Y) 408142.86
Easting (X) 641941.52

Base Station - 22 182W
Northing (Y) 408053.25
Easting (X) 679287.00

All distances are shown in U.S. Survey Feet.
Bearings are for tie reference purposes only.
Coordinates were derived from RTK GNSS procedures.

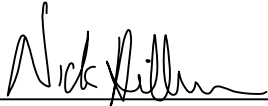


⊕ = LOCATION CORNER
Corner I.D. E 1/4 20
T 18 N R 3 W
Town of La Fayette
Monroe County, WI.

CERTIFICATE

I, Nicholas M. Hillmer, do hereby certify that this document and the data contained herein was prepared by me or under my direct supervision and that I am a duly Licensed Land Surveyor under the laws of the State of Wisconsin.

Dated this 21st day of May, 2013



Nicholas M. Hillmer, P.L.S. 2909
Anderson Engineering of Minnesota, LLC.

CERTIFIED LAND CORNER

History of corner established since Original Government Survey

The 1940's McCoy boundary notes show a corner at this location.

No. 21803262000

Description of evidence found

On August 30th, 2012, Anderson Engineering of Minnesota located the McCoy monument, a 9 inch square concrete monument with a pointed top and stamped US MIL RES No. 11. Monument rises 3 feet +/- from the ground.

Description of corner and witness monuments, references and accessories used to perpetuate the original or re-established location of this corner:

Witnesses to corner location:

Nick Hillmer
Josh Oslund
Dan Greenwald

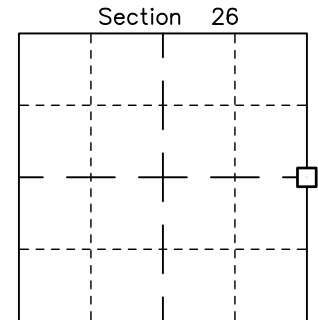
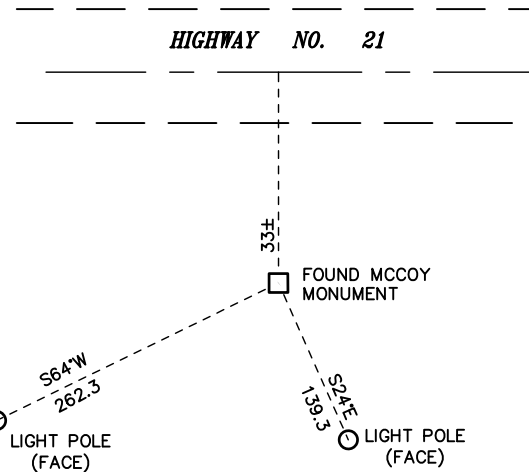


MONROE COUNTY
COORDINATE SYSTEM
NAD 1983 (2007)

MCCOY MONUMENT
Northing (Y) 402629.66
Easting (X) 657886.03

Base Station - 22 182W
Northing (Y) 408053.25
Easting (X) 679287.00

All distances are shown in U.S. Survey Feet.
Bearings are for tie reference purposes only.
Coordinates were derived from RTK GNSS procedures.



□ = LOCATION CORNER

Corner I.D. E 1/4 26

T 18 N R 3 W

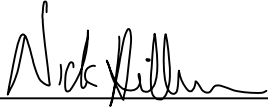
Town of La Fayette
Monroe County, WI.



CERTIFICATE

I, Nicholas M. Hillmer, do hereby certify that this document and the data contained herein was prepared by me or under my direct supervision and that I am a duly Licensed Land Surveyor under the laws of the State of Wisconsin.

Dated this 21st day of May, 2013



Nicholas M. Hillmer, P.L.S. 2909
Anderson Engineering of Minnesota, LLC.

CERTIFIED LAND CORNER

History of corner established since Original Government Survey

There is no known history of this corner since the government survey.

Description of evidence found

On May 7th, 2013, Anderson Engineering of Minnesota set a Harrison monument by double proportioned method between the south quarter corner of Section 27 and the southeast corner of Section 26 and the southeast corner of Section 34 and the east quarter of Section 27. The monument is in a pine tree plantation and flush with the ground.

No. 21803270000

Description of corner and witness monuments, references and accessories used to perpetuate the original or re-established location of this corner:

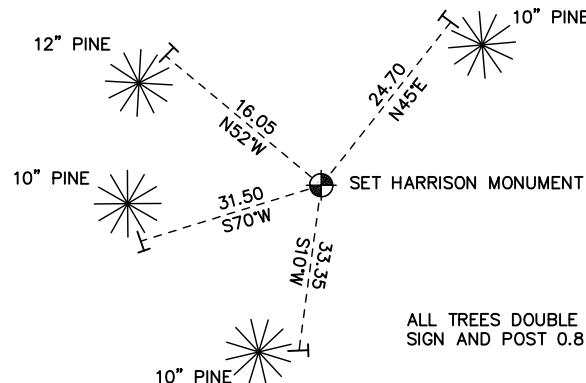
Witnesses to corner location:

Nick Hillmer
Josh Oslund
Dan Greenwald

MONROE COUNTY
COORDINATE SYSTEM
NAD 1983 (2007)

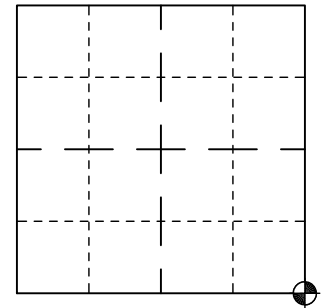
HARRISON MONUMENT
Northing (Y) 400108.70
Easting (X) 652622.57

Base Station - 22 182W
Northing (Y) 408053.25
Easting (X) 679287.00



ALL TREES DOUBLE BLAZED.
SIGN AND POST 0.8 FEET SOUTH.

Section 27



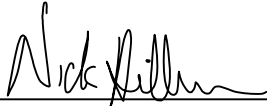
⊙ = LOCATION CORNER
Corner I.D. SE 27
T 18 N R 3 W
Town of La Fayette
Monroe County, WI.

All distances are shown in U.S. Survey Feet.
Ties are to 60D nails set in trees.
Bearings are for tie reference purposes only.
Coordinates were derived from RTK GNSS procedures.

CERTIFICATE

I, Nicholas M. Hillmer, do hereby certify that this document and the data contained herein was prepared by me or under my direct supervision and that I am a duly Licensed Land Surveyor under the laws of the State of Wisconsin.

Dated this 21st day of May, 2013



Nicholas M. Hillmer, P.L.S. 2909
Anderson Engineering of Minnesota, LLC.

CERTIFIED LAND CORNER

History of corner established since Original Government Survey

The east quarter corner of Section 27 is referenced in Book 164 of Deeds, page 410 as the point of beginning of a cemetery.

Description of evidence found

On February 27th, 2013, Anderson Engineering of Minnesota located a 3/4 inch solid bar at the southeast corner of the cemetery. The solid bar is accepted as the best available evidence.

No. 21803272000

Description of corner and witness monuments, references and accessories used to perpetuate the original or re-established location of this corner:

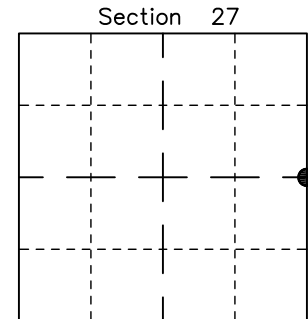
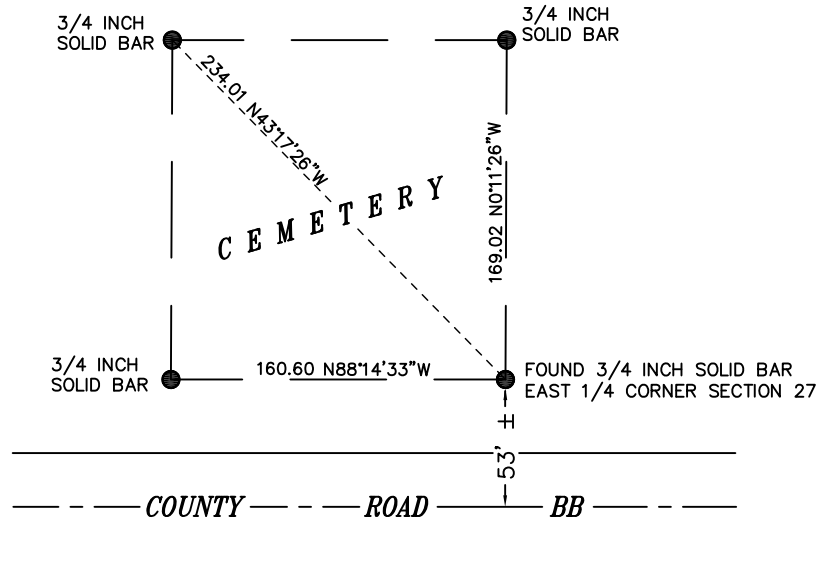
Witnesses to corner location:

Nick Hillmer
Josh Oslund
Dan Greenwald

MONROE COUNTY
COORDINATE SYSTEM
NAD 1983 (2007)

FOUND 3/4 INCH SOLID BAR
Northing (Y) 402766.06
Easting (X) 652595.59

Base Station - 22 182W
Northing (Y) 408053.25
Easting (X) 679287.00



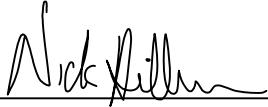
● = LOCATION CORNER
Corner I.D. E 1/4 27
T 18 N R 3 W
Town of La Fayette
Monroe County, WI.

All distances are shown in U.S. Survey Feet.
Bearings are for tie reference purposes only.
Coordinates were derived from RTK GNSS procedures.

CERTIFICATE

I, Nicholas M. Hillmer, do hereby certify that this document and the data contained herein was prepared by me or under my direct supervision and that I am a duly Licensed Land Surveyor under the laws of the State of Wisconsin.

Dated this 23rd day of May, 2013



Nicholas M. Hillmer, P.L.S. 2909
Anderson Engineering of Minnesota, LLC.

CERTIFIED LAND CORNER

History of corner established since Original Government Survey

In July of 1975 Harley Sime retraced an old survey. Sime found evidence of an old telephone pole listed in the old survey notes as being adjacent to an iron bar. Sime used the evidence to set a Harrison monument.

Description of evidence found

On January 23rd, 2013, Anderson Engineering of Minnesota located the Harrison monument 0.2 feet below grade and 0.4 feet northwest of a witness post with a survey marker sign.

No. 21803320000

Description of corner and witness monuments, references and accessories used to perpetuate the original or re-established location of this corner:

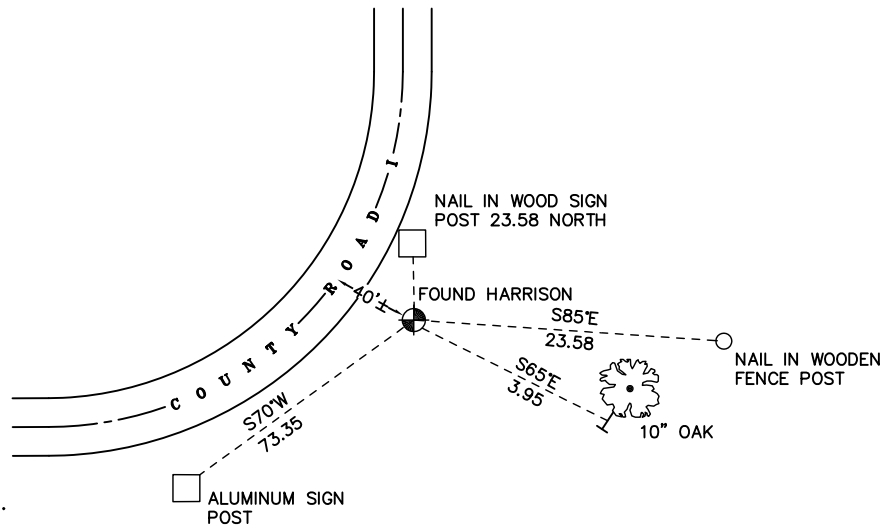
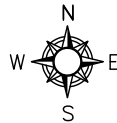
Witnesses to corner location:

Nick Hillmer
Josh Oslund
Dan Greenwald

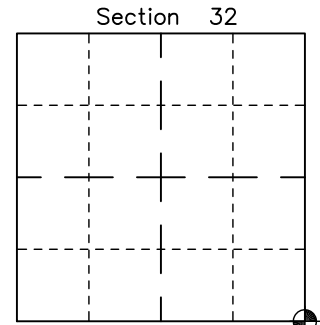
MONROE COUNTY
COORDINATE SYSTEM
NAD 1983 (2007)

HARRISON MONUMENT
Northing (Y) 394841.07
Easting (X) 642142.12

Base Station - 22 182W
Northing (Y) 408053.25
Easting (X) 679287.00



All distances are shown in U.S. Survey Feet.
Bearings are for tie reference purposes only.
Coordinates were derived from RTK GNSS procedures.

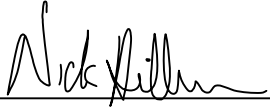


⊙ = LOCATION CORNER
Corner I.D. SE 32
T 18 N R 3 W
Town of La Fayette
Monroe County, WI.

CERTIFICATE

I, Nicholas M. Hillmer, do hereby certify that this document and the data contained herein was prepared by me or under my direct supervision and that I am a duly Licensed Land Surveyor under the laws of the State of Wisconsin.

Dated this 23rd day of May, 2013



Nicholas M. Hillmer, P.L.S. 2909
Anderson Engineering of Minnesota, LLC.

CERTIFIED LAND CORNER

History of corner established since Original Government Survey

On October 3rd, 1986, Garold Sime set this corner on line and equidistant between the southeast corner of Section 33 and the northeast corner of Section 33.

No. 21803332000

Description of evidence found

On August 30th, 2012, Anderson Engineering of Minnesota located the Harrison monument flush with the ground and 0.1 feet north of a green metal fence post.

Description of corner and witness monuments, references and accessories used to perpetuate the original or re-established location of this corner:

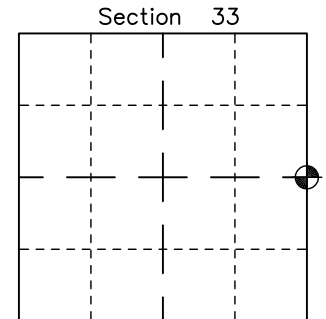
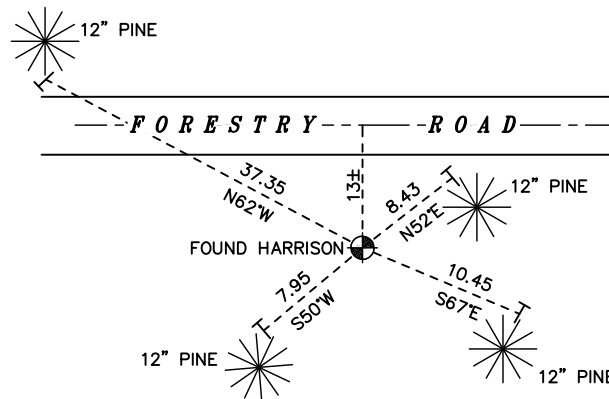
Witnesses to corner location:

Nick Hillmer
Josh Oslund
Dan Greenwald

MONROE COUNTY
COORDINATE SYSTEM
NAD 1983 (2007)

HARRISON MONUMENT
Northing (Y) 397476.33
Easting (X) 647378.92

Base Station - 22 182W
Northing (Y) 408053.25
Easting (X) 679287.00



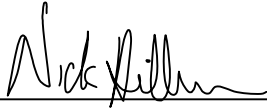
● = LOCATION CORNER
Corner I.D. E 1/4 33
T 18 N R 3 W
Town of La Fayette
Monroe County, WI.

All distances are shown in U.S. Survey Feet.
Ties are to 60D nails set in trees.
Bearings are for tie reference purposes only.
Coordinates were derived from RTK GNSS procedures.

CERTIFICATE

I, Nicholas M. Hillmer, do hereby certify that this document and the data contained herein was prepared by me or under my direct supervision and that I am a duly Licensed Land Surveyor under the laws of the State of Wisconsin.

Dated this 21st day of May, 2013



Nicholas M. Hillmer, P.L.S. 2909
Anderson Engineering of Minnesota, LLC.

CERTIFIED LAND CORNER

History of corner established since Original Government Survey

No known history of this corner since the government survey.

Description of evidence found

On May 7th, 2013, Anderson Engineering of Minnesota found no evidence of the corner. A Harrison monument was set single proportionately between the south quarter of Section 34 and the southeast corner of Section 35. The monument is within a pine tree plantation and is flush with the ground.

No. 21803340000

Description of corner and witness monuments, references and accessories used to perpetuate the original or re-established location of this corner:

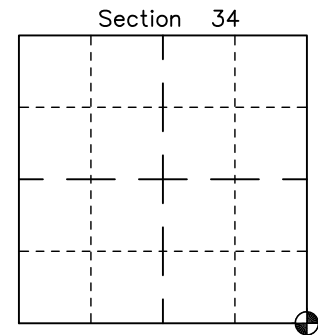
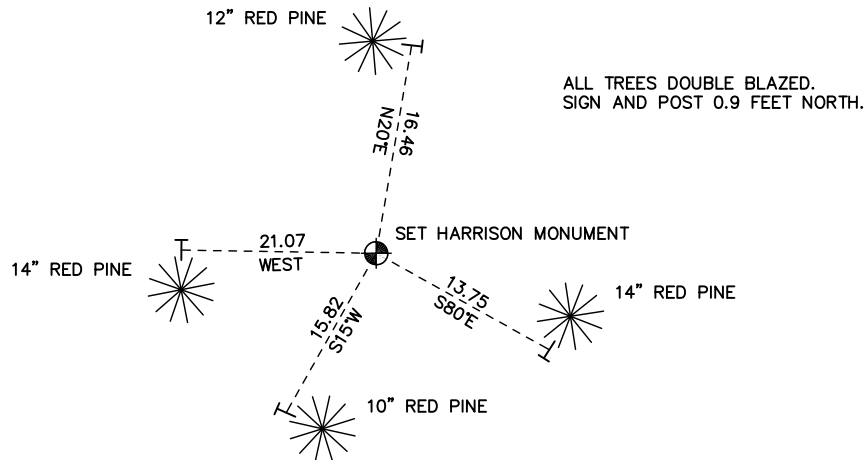
Witnesses to corner location:

Nick Hillmer
Josh Oslund
Dan Greenwald

MONROE COUNTY
COORDINATE SYSTEM
NAD 1983 (2007)

HARRISON MONUMENT
Northing (Y) 394793.27
Easting (X) 652701.96

Base Station - 22 182W
Northing (Y) 408053.25
Easting (X) 679287.00



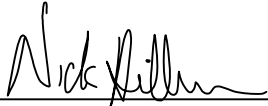
● = LOCATION CORNER
Corner I.D. SE 34
T 18 N R 3 W
Town of La Fayette
Monroe County, WI.

All distances are shown in U.S. Survey Feet.
Ties are to 60D nails set in trees.
Bearings are for tie reference purposes only.
Coordinates were derived from RTK GNSS procedures.

CERTIFICATE

I, Nicholas M. Hillmer, do hereby certify that this document and the data contained herein was prepared by me or under my direct supervision and that I am a duly Licensed Land Surveyor under the laws of the State of Wisconsin.

Dated this 21st day of May, 2013



Nicholas M. Hillmer, P.L.S. 2909
Anderson Engineering of Minnesota, LLC.

CERTIFIED LAND CORNER

History of corner established since Original Government Survey

The 1940's McCoy boundary notes show a "old McCoy mont." at this location. There is only one found document from Fort McCoy with line work illustrating this position in a 1930's expansion map. The map does not identify any monument information.

Description of evidence found

On April 4th, 2013, Anderson Engineering of Minnesota recovered the "old McCoy mont." a 4 foot tall 9 inch concrete square stamped "US MIL RES NO. 4. The monument was not accepted as the corner. On May 7th, 2013, Anderson Engineering of Minnesota set a Harrison monument by extending the north-south quarter line down through the found "old McCoy mont." to the township line, established by the southeast corner of Section 33 and the southeast corner of Section 35. The monument is flush with the ground.

No. 21803340020

Description of corner and witness monuments, references and accessories used to perpetuate the original or re-established location of this corner:

Witnesses to corner location:

Nick Hillmer
Josh Oslund
Dan Greenwald

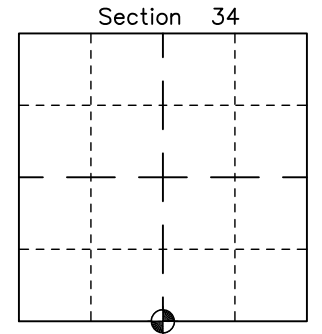
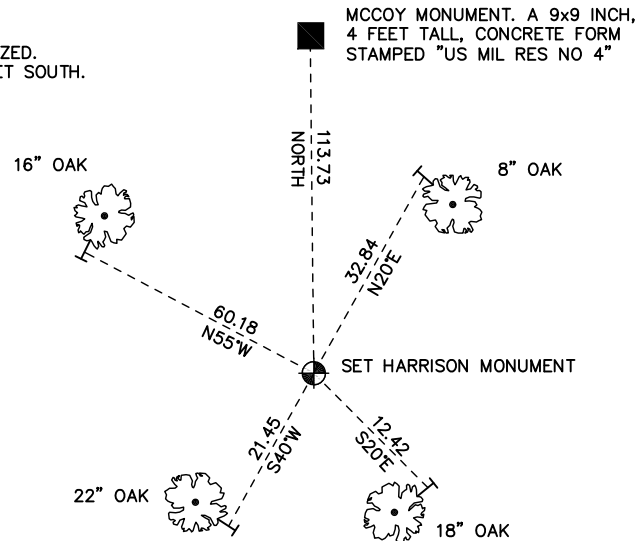
MONROE COUNTY
COORDINATE SYSTEM
NAD 1983 (2007)

HARRISON MONUMENT
Northing (Y) 394810.78
Easting (X) 650056.64

Base Station - 22 182W
Northing (Y) 408053.25
Easting (X) 679287.00



ALL TREES DOUBLE BLAZED.
SIGN AND POST 0.8 FEET SOUTH.



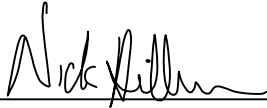
⊙ = LOCATION CORNER
Corner I.D. S 1/4 34
T 18 N R 3 W
Town of La Fayette
Monroe County, WI.

All distances are shown in U.S. Survey Feet.
Ties are to 60D nails set in trees.
Bearings are for tie reference purposes only.
Coordinates were derived from RTK GNSS procedures.

CERTIFICATE

I, Nicholas M. Hillmer, do hereby certify that this document and the data contained herein was prepared by me or under my direct supervision and that I am a duly Licensed Land Surveyor under the laws of the State of Wisconsin.

Dated this 21st day of May, 2013



Nicholas M. Hillmer, P.L.S. 2909
Anderson Engineering of Minnesota, LLC.

CERTIFIED LAND CORNER

History of corner established since Original Government Survey

No known history of this corner since the government survey.

Description of evidence found

On May 7th, 2013, Anderson Engineering of Minnesota found no evidence of the corner. A Harrison monument was set online and equal distance between the northeast corner and the southeast corner of Section 34. The monument is within a mature deciduous forest and flush with the ground.

No. 21803342000

Description of corner and witness monuments, references and accessories used to perpetuate the original or re-established location of this corner:

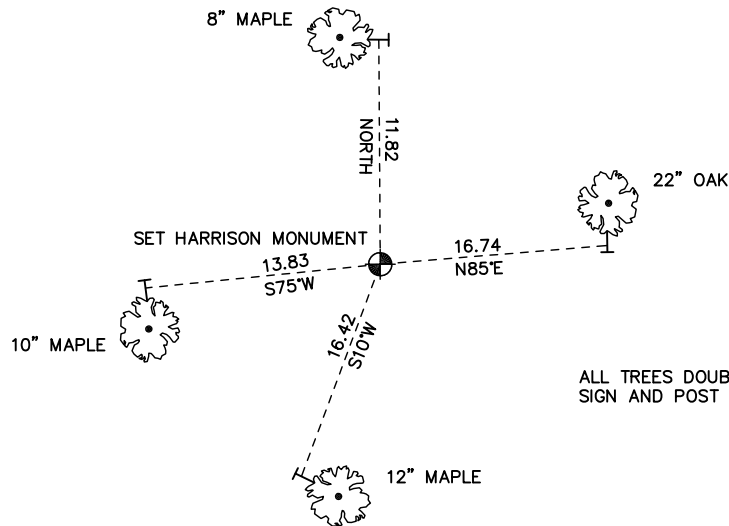
Witnesses to corner location:

Nick Hillmer
Josh Oslund
Dan Greenwald

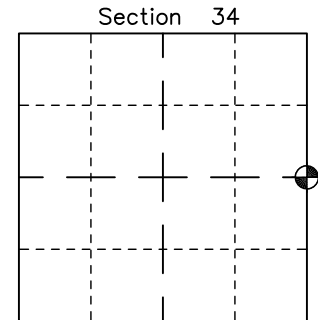
MONROE COUNTY
COORDINATE SYSTEM
NAD 1983 (2007)

HARRISON MONUMENT
Northing (Y) 397450.98
Easting (X) 652662.26

Base Station - 22 182W
Northing (Y) 408053.25
Easting (X) 679287.00



ALL TREES DOUBLE BLAZED.
SIGN AND POST 0.9 FEET NORTH.



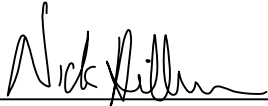
● = LOCATION CORNER
Corner I.D. E 1/4 34
T 18 N R 3 W
Town of La Fayette
Monroe County, WI.

All distances are shown in U.S. Survey Feet.
Ties are to 60D nails set in trees.
Bearings are for tie reference purposes only.
Coordinates were derived from RTK GNSS procedures.

CERTIFICATE

I, Nicholas M. Hillmer, do hereby certify that this document and the data contained herein was prepared by me or under my direct supervision and that I am a duly Licensed Land Surveyor under the laws of the State of Wisconsin.

Dated this 21st day of May, 2013



Nicholas M. Hillmer, P.L.S. 2909
Anderson Engineering of Minnesota, LLC.

CERTIFIED LAND CORNER

History of corner established since Original Government Survey

No known history of this corner since the government survey.

Description of evidence found

On April 10th, 2013, Anderson Engineering of Minnesota located a 6 inch wide by 1 inch thick strap iron set in concrete up 2 1/2 feet in a Fort McCoy natural area. This is the same monument used at the southeast corner of Section 36 which is called out as being the township corner per a boundary survey of Habelman's cranberry bog done by Fort McCoy in the 1940's, document number 47-018-0371-A48. The monument is accepted as the best available evidence.

No. 21803350000

Description of corner and witness monuments, references and accessories used to perpetuate the original or re-established location of this corner:

Witnesses to corner location:

Nick Hillmer
Josh Oslund
Dan Greenwald

MONROE COUNTY
COORDINATE SYSTEM
NAD 1983 (2007)

HARRISON MONUMENT
Northing (Y) 394758.27
Easting (X) 657992.60

Base Station - 22 182W
Northing (Y) 408053.25
Easting (X) 679287.00



FOUND HARRISON
MONUMENT. SOUTHEAST
CORNER OF SECTION 34

N89°37'15"W
5290.75

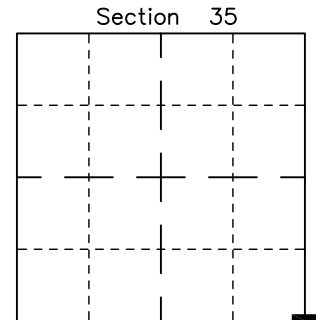
NATURAL

FOUND 6 INCH WIDE
STRAP IRON IN CONCRETE
UP 2 1/2 FEET

N89°35'22"E
5197.66

AREA
PRAIRIE)

FOUND 6 INCH WIDE STRAP
IRON IN CONCRETE UP 2
1/2 FEET. SOUTHEAST
CORNER OF SECTION 36



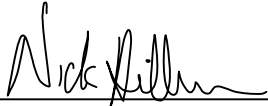
■ = LOCATION CORNER
Corner I.D. SE 35
T 18 N R 3 W
Town of La Fayette
Monroe County, WI.

All distances are shown in U.S. Survey Feet.
Bearings are for tie reference purposes only.
Coordinates were derived from RTK GNSS procedures.

CERTIFICATE

I, Nicholas M. Hillmer, do hereby certify that this document and the data contained herein was prepared by me or under my direct supervision and that I am a duly Licensed Land Surveyor under the laws of the State of Wisconsin.

Dated this 21st day of May, 2013



Nicholas M. Hillmer, P.L.S. 2909
Anderson Engineering of Minnesota, LLC.

CERTIFIED LAND CORNER

History of corner established since Original Government Survey

This monument is depicted as the Township corner in a boundary survey of Habelman's cranberry bog done by Fort McCoy in the 1940's, document number 47-018-0371-A48.

No. 21803360000

Description of evidence found

On April 10th, 2013, Anderson Engineering of Minnesota located a 6 inch wide by 1 inch thick strap iron set in concrete up 2 1/2 feet. The monument is accepted as the best available evidence.

Description of corner and witness monuments, references and accessories used to perpetuate the original or re-established location of this corner:

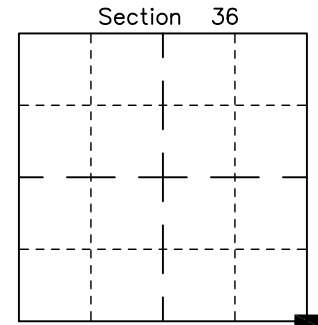
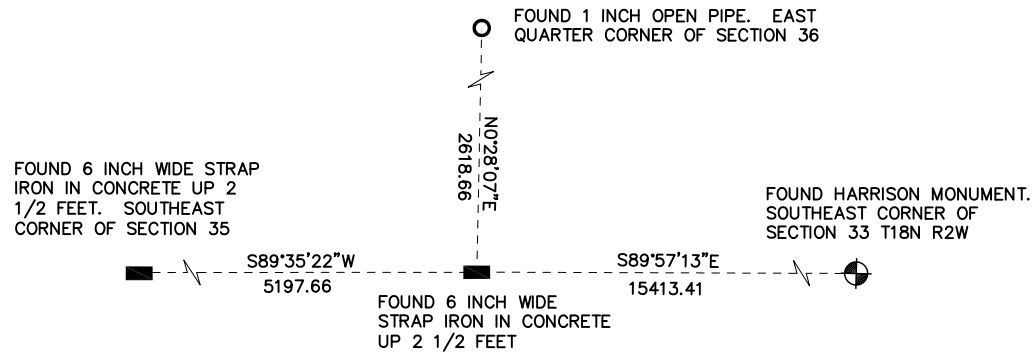
Witnesses to corner location:

Nick Hillmer
Josh Oslund
Dan Greenwald

MONROE COUNTY
COORDINATE SYSTEM
NAD 1983 (2007)

HARRISON MONUMENT
Northing (Y) 394795.51
Easting (X) 663190.13

Base Station - 22 182W
Northing (Y) 408053.25
Easting (X) 679287.00



■ = LOCATION CORNER
Corner I.D. SE 36
T 18 N R 3 W
Town of La Fayette
Monroe County, WI.

All distances are shown in U.S. Survey Feet.
Bearings are for tie reference purposes only.
Coordinates were derived from RTK GNSS procedures.