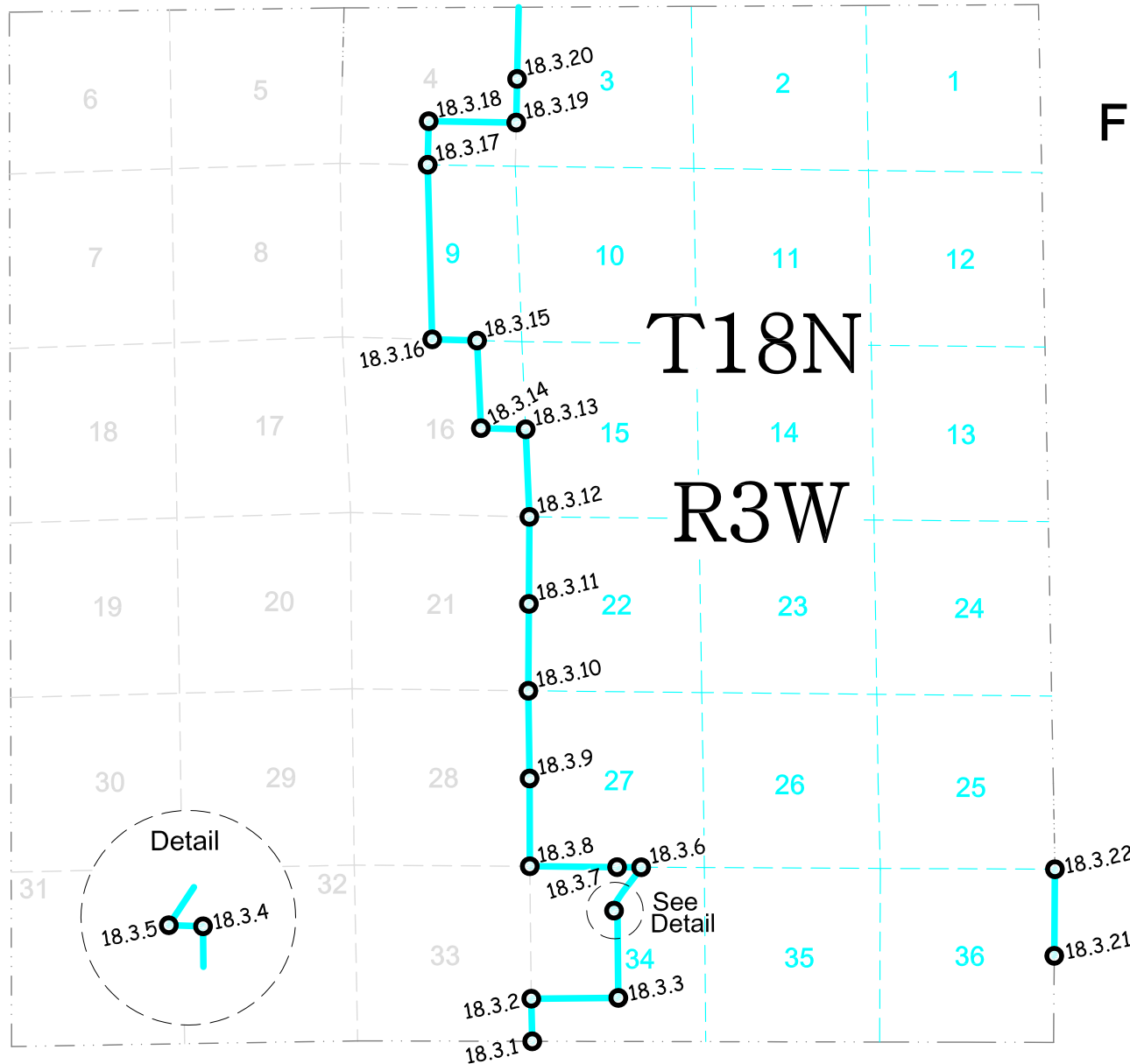


2013 Fort McCoy boundary monuments of Township 18 North, Range 3 West Lafayette



LEGEND

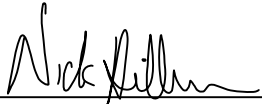
- Boundary monument
- 18.3.X "X" Denotes proceeding page number



CERTIFICATE

I, Nicholas M. Hillmer, do hereby certify that this document and the data contained herein was prepared by me or under my direct supervision and that I am a duly Licensed Land Surveyor under the laws of the State of Wisconsin.

Dated this 21st day of May, 2013



Nicholas M. Hillmer, P.L.S. 2909
Anderson Engineering of Minnesota, LLC.

CERTIFIED LAND CORNER

No. _____
21803330000

History of corner established since Original Government Survey

The 1940's McCoy boundary notes show a corner at this location. In 1980 Harley A. Sime did not find the McCoy monument and determined it was bulldozed out. Sime set a 1 1/2 inch iron pipe at a computed location after surveying Sections 4, 5, and 6 of T17N R3W, and Section 33 and part of Section 34 of T18N R3W. Sime states that the existing fence line along the north line of the Northeast Quarter of Section 4 is definitely in error.

Description of evidence found

On August 9, 2012, Anderson Engineering of Minnesota located the 1 1/2 inch iron pipe set by Harley Sime in 1980. On May 8th, 2013, Anderson Engineering of Minnesota replaced Sime's iron with a 3/4 inch aluminum drive monument with a 3 1/4 inch aluminum cap, stamped "FORT MCCOY BOUNDARY" "2013" "ANDERSON ENG. OF MN."

Description of corner and witness monuments, references and accessories used to perpetuate the original or re-established location of this corner:

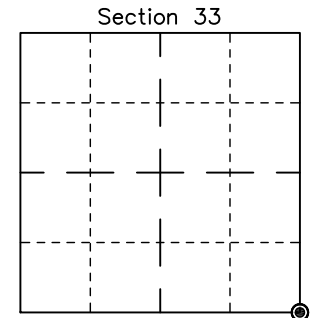
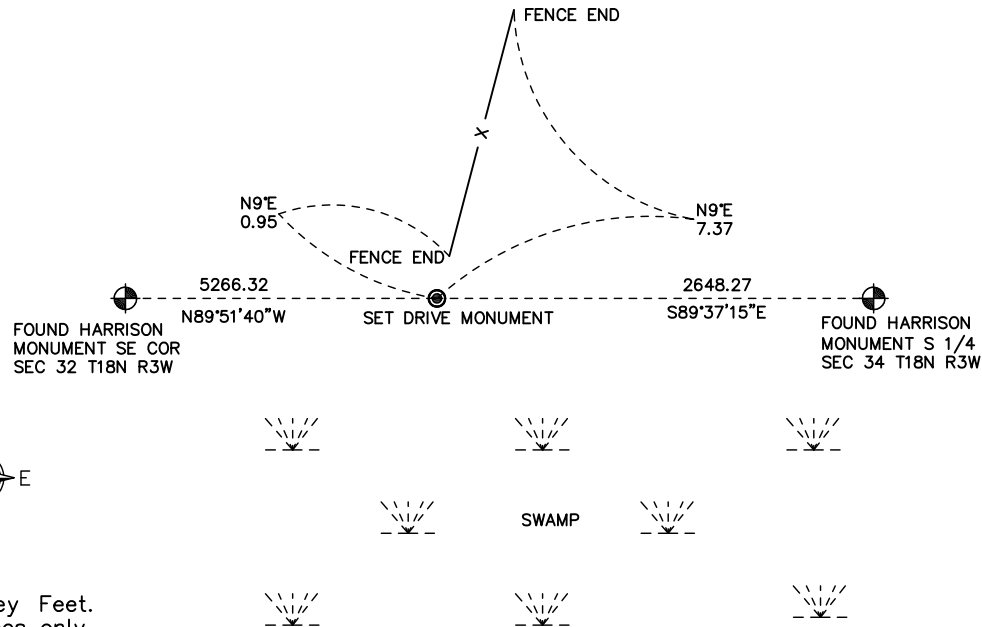
Witnesses to corner location:

Nick Hillmer
Josh Oslund
Dan Greenwald

MONROE COUNTY
COORDINATE SYSTEM
NAD 1983 (2007)

HARRISON MONUMENT
Northing (Y) 394828.29
Easting (X) 647408.42

Base Station - 22 182W
Northing (Y) 408053.25
Easting (X) 679287.00



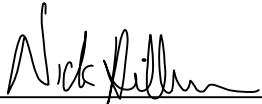
⊙ = LOCATION CORNER
 Corner I.D. SE 33
 T 18 N R 3 W
 Town of La Fayette
 Monroe County, WI.

All distances are shown in U.S. Survey Feet.
 Bearings are for tie reference purposes only.
 Coordinates were derived from RTK GNSS procedures.

CERTIFICATE

I, Nicholas M. Hillmer, do hereby certify that this document and the data contained herein was prepared by me or under my direct supervision and that I am a duly Licensed Land Surveyor under the laws of the State of Wisconsin.

Dated this 21st day of May, 2013



Nicholas M. Hillmer, P.L.S. 2909
Anderson Engineering of Minnesota, LLC.

CERTIFIED LAND CORNER

History of corner established since Original Government Survey

The 1940's McCoy boundary notes show a corner at this location.

Description of evidence found

No evidence of the McCoy monument was found. On May 7th, 2013, Anderson Engineering of Minnesota set a 30 inch Berntsen aluminum dig monument with a 3 1/4 inch aluminum cap, stamped "FORT MCCOY BOUNDARY" "2013" "ANDERSON ENG. OF MN." The monument was set midway and online between the southeast corner and east quarter corner of Section 33.

No. _____
21803331000

Description of corner and witness monuments, references and accessories used to perpetuate the original or re-established location of this corner:

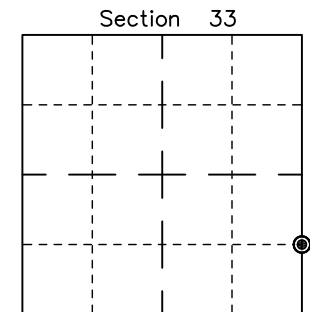
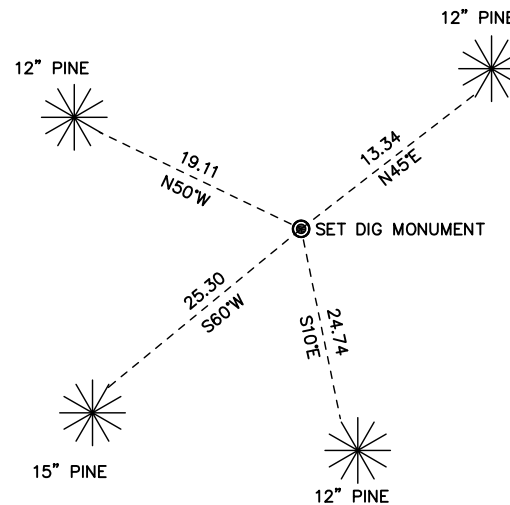
Witnesses to corner location:

Nick Hillmer
Josh Oslund
Dan Greenwald

MONROE COUNTY
COORDINATE SYSTEM
NAD 1983 (2007)

MCCOY MONUMENT
Northing (Y) 396152.31
Easting (X) 647393.67

Base Station - 22 182W
Northing (Y) 408053.25
Easting (X) 679287.00



⊙ = LOCATION CORNER

Corner I.D. S 1/16 33

T 18 N R 3 W

Town of La Fayette

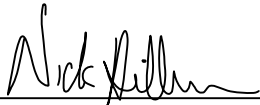
Monroe County, WI.

All distances are shown in U.S. Survey Feet.
Ties are to 60D nails set in trees.
Bearings are for tie reference purposes only.
Coordinates were derived from RTK GNSS procedures.

CERTIFICATE

I, Nicholas M. Hillmer, do hereby certify that this document and the data contained herein was prepared by me or under my direct supervision and that I am a duly Licensed Land Surveyor under the laws of the State of Wisconsin.

Dated this 21st day of May, 2013



Nicholas M. Hillmer, P.L.S. 2909
Anderson Engineering of Minnesota, LLC.

CERTIFIED LAND CORNER

History of corner established since Original Government Survey

The 1940's McCoy boundary notes show a corner at this location.

Description of evidence found

No evidence of the McCoy monument was found. On May 7th, 2013, Anderson Engineering of Minnesota set a 3/4 inch aluminum drive monument with a 3 1/4 inch aluminum cap, stamped "FORT MCCOY BOUNDARY" "2013" "ANDERSON ENG. OF MN." The monument was set midway and online between the south quarter corner and calculated center of Section 34.

No. _____
21803341020

Description of corner and witness monuments, references and accessories used to perpetuate the original or re-established location of this corner:

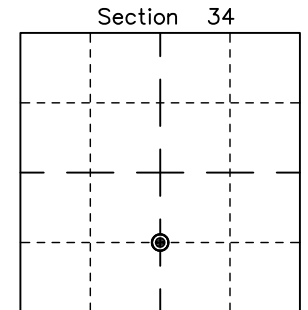
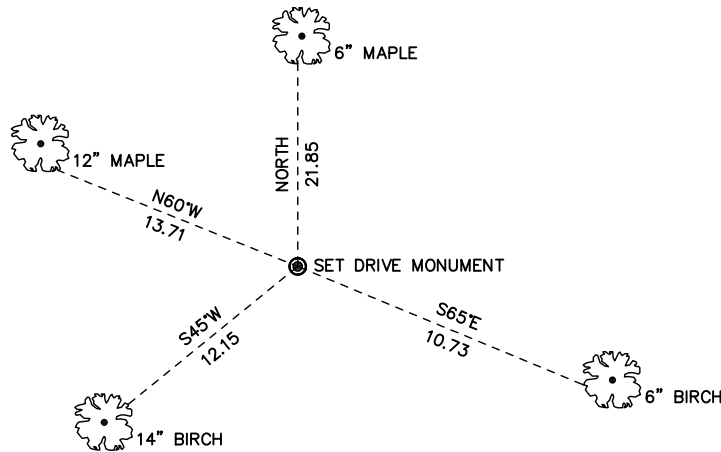
Witnesses to corner location:

Nick Hillmer
Josh Oslund
Dan Greenwald

MONROE COUNTY
COORDINATE SYSTEM
NAD 1983 (2007)

MCCOY DRIVE MONUMENT
Northing (Y) 396137.21
Easting (X) 650039.49

Base Station - 22 182W
Northing (Y) 408053.25
Easting (X) 679287.00



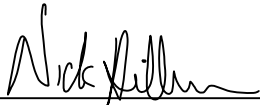
⊙ = LOCATION CORNER
Corner I.D. CS 1/16 34
T 18 N R 3 W
Town of La Fayette
Monroe County, WI.

All distances are shown in U.S. Survey Feet.
Ties are to 60D nails set in trees.
Bearings are for tie reference purposes only.
Coordinates were derived from RTK GNSS procedures.

CERTIFICATE

I, Nicholas M. Hillmer, do hereby certify that this document and the data contained herein was prepared by me or under my direct supervision and that I am a duly Licensed Land Surveyor under the laws of the State of Wisconsin.

Dated this 21st day of May, 2013



Nicholas M. Hillmer, P.L.S. 2909
Anderson Engineering of Minnesota, LLC.

CERTIFIED LAND CORNER

History of corner established since Original Government Survey

The 1940's McCoy boundary notes show a corner at this location.

Description of evidence found

No evidence of the McCoy monument was found. On May 7th, 2013, Anderson Engineering of Minnesota set a 30 inch Berntsen aluminum dig monument with a 3 1/4 inch aluminum cap, stamped "FORT MCCOY BOUNDARY" "2013" "ANDERSON ENG. OF MN." The monument was set midway and online between the calculated center and north quarter corner of Section 34.

No. _____
21803343020

Description of corner and witness monuments, references and accessories used to perpetuate the original or re-established location of this corner:

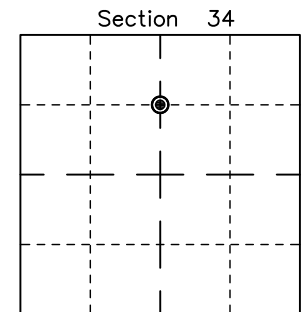
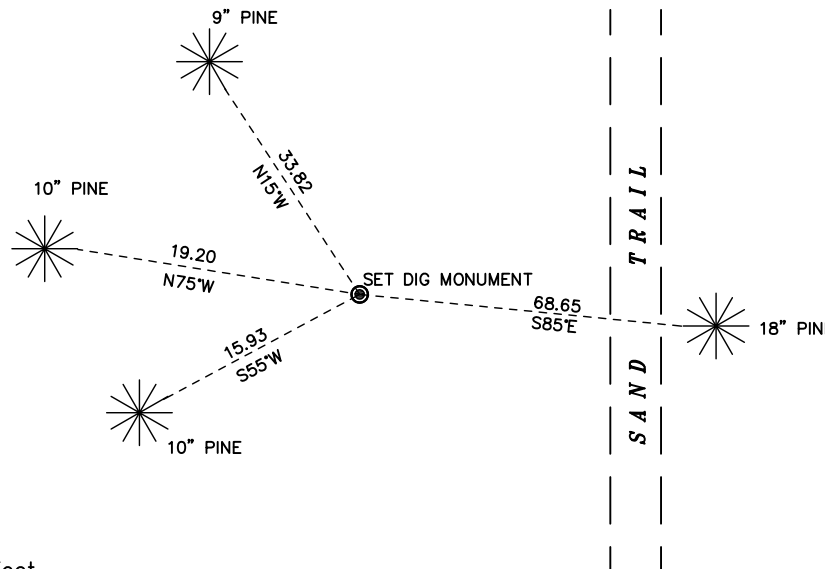
Witnesses to corner location:

Nick Hillmer
Josh Oslund
Dan Greenwald

MONROE COUNTY
COORDINATE SYSTEM
NAD 1983 (2007)

MCCOY MONUMENT
Northing (Y) 398780.76
Easting (X) 650005.32

Base Station - 22 182W
Northing (Y) 408053.25
Easting (X) 679287.00



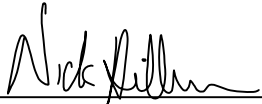
⊙ = LOCATION CORNER
Corner I.D. CN 1/16 34
T 18 N R 3 W
Town of La Fayette
Monroe County, WI.

All distances are shown in U.S. Survey Feet.
Ties are to 60D nails set in trees.
Bearings are for tie reference purposes only.
Coordinates were derived from RTK GNSS procedures.

CERTIFICATE

I, Nicholas M. Hillmer, do hereby certify that this document and the data contained herein was prepared by me or under my direct supervision and that I am a duly Licensed Land Surveyor under the laws of the State of Wisconsin.

Dated this 23rd day of May, 2013



Nicholas M. Hillmer, P.L.S. 2909
Anderson Engineering of Minnesota, LLC.

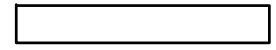
CERTIFIED LAND CORNER

History of corner established since Original Government Survey

No record of this monument was found.

Description of evidence found

On May 21st, 2013, Anderson Engineering of Minnesota set a 3/4 inch aluminum drive monument with a 3 1/4 inch aluminum cap, stamped "FORT MCCOY BOUNDARY" "2013" "ANDERSON ENG. OF MN" at the intersection of the northwesterly right-of-way of Highway 21 and the north sixteenth line of Section 34.

No. _____


Description of corner and witness monuments, references and accessories used to perpetuate the original or re-established location of this corner:

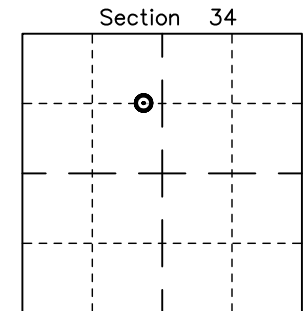
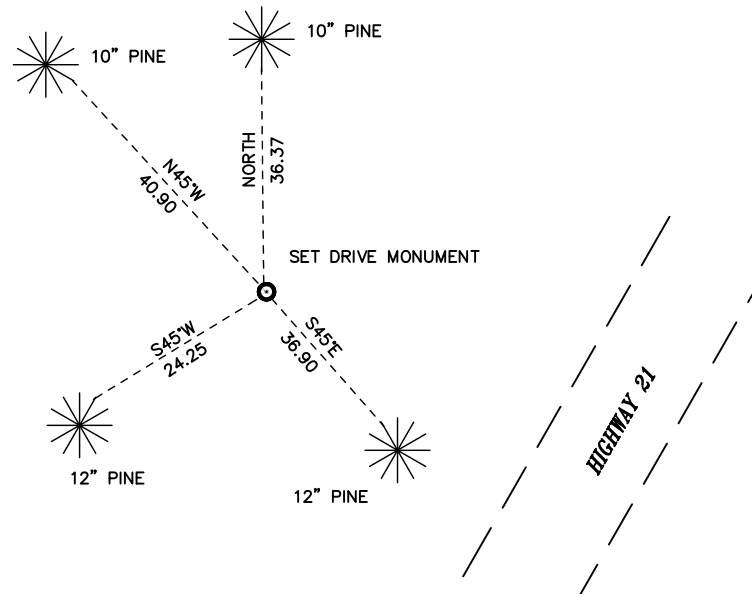
Witnesses to corner location:

Nick Hillmer
Josh Oslund
Dan Greenwald

MONROE COUNTY
COORDINATE SYSTEM
NAD 1983 (2007)

MCCOY DRIVE MONUMENT
Northing (Y) 398783.75
Easting (X) 649601.52

Base Station - 22 182W
Northing (Y) 408053.25
Easting (X) 679287.00



⊙ = LOCATION CORNER
Corner I.D. INTERSECTION
OF HWY 21 R.O.W & N.
1/16 LINE SEC 34

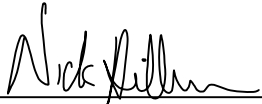
T 18 N R 3 W
Town of La Fayette
Monroe County, WI.

All distances are shown in U.S. Survey Feet.
Ties are to 60D nails set in trees.
Bearings are for tie reference purposes only.
Coordinates were derived from RTK GNSS procedures.

CERTIFICATE

I, Nicholas M. Hillmer, do hereby certify that this document and the data contained herein was prepared by me or under my direct supervision and that I am a duly Licensed Land Surveyor under the laws of the State of Wisconsin.

Dated this 23rd day of May, 2013



Nicholas M. Hillmer, P.L.S. 2909
Anderson Engineering of Minnesota, LLC.

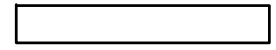
CERTIFIED LAND CORNER

History of corner established since Original Government Survey

No record of this monument was found.

Description of evidence found

On May 21st, 2013, Anderson Engineering of Minnesota set a 3/4 inch aluminum drive monument with a 3 1/4 inch aluminum cap, stamped "FORT MCCOY BOUNDARY" "2013" "ANDERSON ENG. OF MN" at the intersection of the northwesterly right-of-way of Highway 21 and the south line of Section 27.

No. _____


Description of corner and witness monuments, references and accessories used to perpetuate the original or re-established location of this corner:

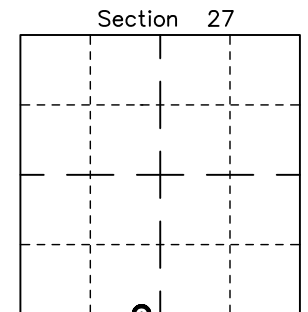
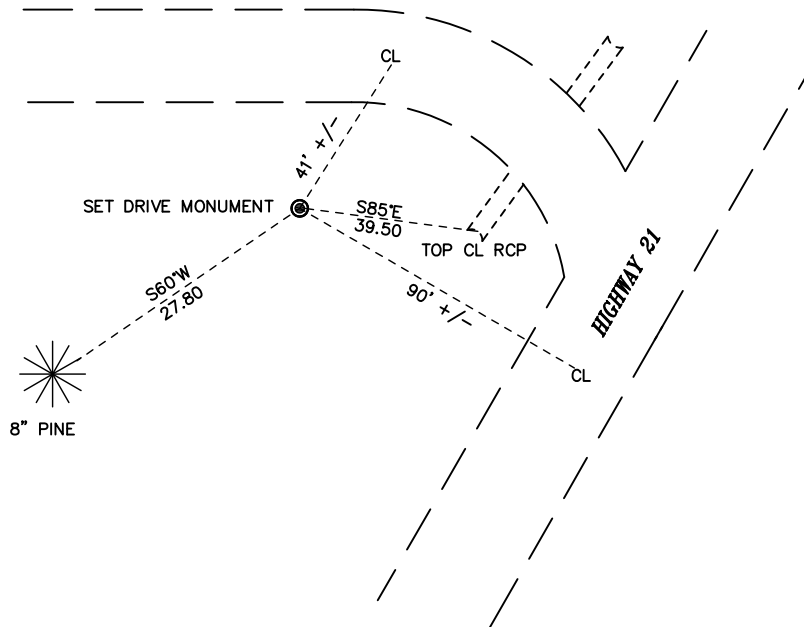
Witnesses to corner location:

Nick Hillmer
Josh Oslund
Dan Greenwald

MONROE COUNTY
 COORDINATE SYSTEM
 NAD 1983 (2007)

MCCOY DRIVE MONUMENT
 Northing (Y) 400100.50
 Easting (X) 650628.97

Base Station - 22 182W
 Northing (Y) 408053.25
 Easting (X) 679287.00



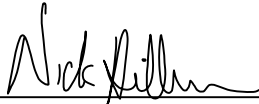
● = LOCATION CORNER
 Corner I.D. INTERSECTION
 OF THE NORTHWESTERLY
 R.O.W OF HWY 21 & S.
 LINE OF SEC 27
 T 18 N R 3 W
 Town of La Fayette
 Monroe County, WI.

All distances are shown in U.S. Survey Feet.
 Ties are to 60D nails set in trees.
 Bearings are for tie reference purposes only.
 Coordinates were derived from RTK GNSS procedures.

CERTIFICATE

I, Nicholas M. Hillmer, do hereby certify that this document and the data contained herein was prepared by me or under my direct supervision and that I am a duly Licensed Land Surveyor under the laws of the State of Wisconsin.

Dated this 21st day of May, 2013



Nicholas M. Hillmer, P.L.S. 2909
Anderson Engineering of Minnesota, LLC.

CERTIFIED LAND CORNER

History of corner established since Original Government Survey

In 1980 William Jung set the corner at a computed location that fits the old Fort McCoy corners along the north line of the Northwest Quarter of Section 34. Jung found a Harrison monument set by him at the northwest corner and a concrete McCoy monument 24.7 feet north of the northwest sixteenth corner. Jung set a Harrison monument on line with the northwest and northwest sixteenth corners at distance from the N1/16NW corners and at distance from the N1/16NW corner equal distance between the northwest and N1/16NW corners.

Description of evidence found

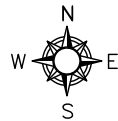
On August 29th, 2012, Anderson Engineering of Minnesota located the Harrison monument flush with the ground and 0.6 feet west of a 4 inch square wood post.

No. _____
21803270020

Description of corner and witness monuments, references and accessories used to perpetuate the original or re-established location of this corner:

Witnesses to corner location:

Nick Hillmer
Josh Oslund
Dan Greenwald

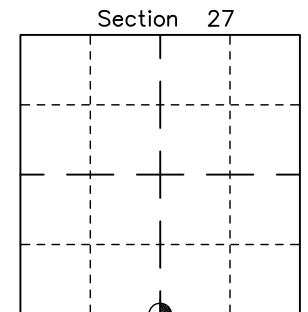
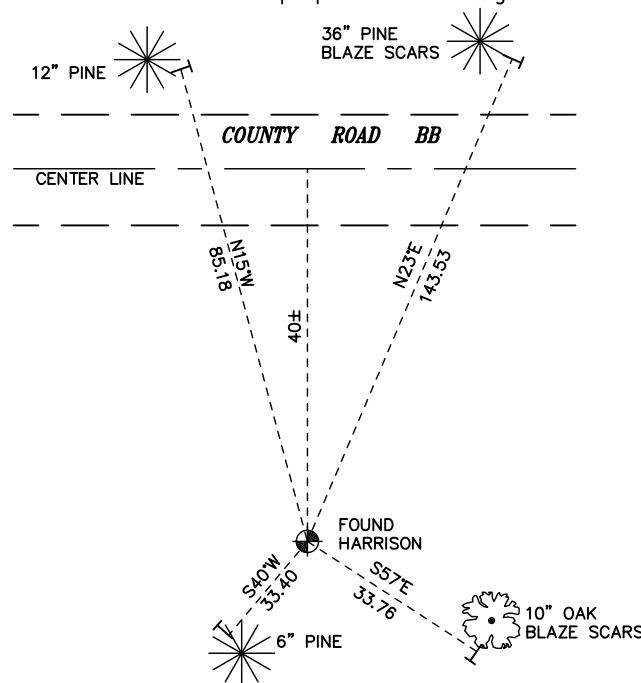


MONROE COUNTY
COORDINATE SYSTEM
NAD 1983 (2007)

HARRISON MONUMENT
Northing (Y) 400097.86
Easting (X) 649988.30

Base Station - 22 182W
Northing (Y) 408053.25
Easting (X) 679287.00

All distances are shown in U.S. Survey Feet.
Ties are to 60D nails set in trees.
Bearings are for tie reference purposes only.
Coordinates were derived from RTK GNSS procedures.

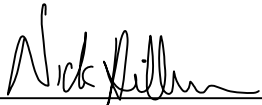


⊙ = LOCATION CORNER
Corner I.D. S 1/4 27
T 18 N R 3 W
Town of La Fayette
Monroe County, WI.

CERTIFICATE

I, Nicholas M. Hillmer, do hereby certify that this document and the data contained herein was prepared by me or under my direct supervision and that I am a duly Licensed Land Surveyor under the laws of the State of Wisconsin.

Dated this 21st day of May, 2013



Nicholas M. Hillmer, P.L.S. 2909
Anderson Engineering of Minnesota, LLC.

CERTIFIED LAND CORNER

History of corner established since Original Government Survey

Fred Holden was here in February of 1902. Harley Sime reset the corner in April of 1977 using the old Fort McCoy notes and the tie points. The corner was endangered in 1993. On April 4, 1993 Meyer and Sime checked the previous ties and established new ties. The Harrison of record was removed. On August 3, 1993 Meyer and Lobe set a 1 1/4 inch round iron bar at the corners location.

Description of evidence found

On August 29th, 2012, Anderson Engineering of Minnesota located the 1 1/4 inch solid round iron pipe 3 feet south of the centerline of the road.

No. _____
21803280000

Description of corner and witness monuments, references and accessories used to perpetuate the original or re-established location of this corner:

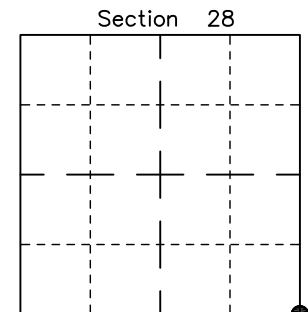
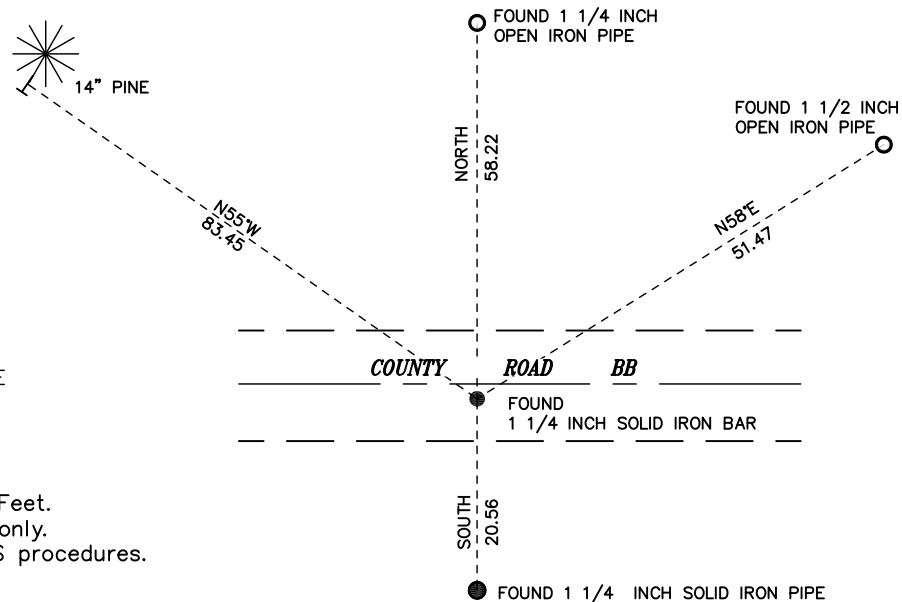
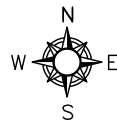
Witnesses to corner location:

Nick Hillmer
Josh Oslund
Dan Greenwald

MONROE COUNTY
COORDINATE SYSTEM
NAD 1983 (2007)

1 1/4 INCH SOLID IRON BAR
Northing (Y) 400124.37
Easting (X) 647348.49

Base Station - 22 182W
Northing (Y) 408053.25
Easting (X) 679287.00



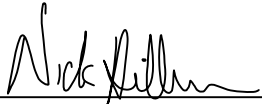
● = LOCATION CORNER
Corner I.D. SE 28
T 18 N R 3 W
Town of La Fayette
Monroe County, WI.

All distances are shown in U.S. Survey Feet.
Bearings are for tie reference purposes only.
Coordinates were derived from RTK GNSS procedures.

CERTIFICATE

I, Nicholas M. Hillmer, do hereby certify that this document and the data contained herein was prepared by me or under my direct supervision and that I am a duly Licensed Land Surveyor under the laws of the State of Wisconsin.

Dated this 21st day of May, 2013



Nicholas M. Hillmer, P.L.S. 2909
Anderson Engineering of Minnesota, LLC.

CERTIFIED LAND CORNER

History of corner established since Original Government Survey

Holden was at this corner in November of 1902. The 1940's McCoy boundary notes do not show a corner at this location. In December of 1982 William Jung set a Harrison monument on line with monuments found at the C 1/4 and CE 1/16 corners and at a distance from the CE 1/16 equal to the distance between the C 1/4 and CE 1/16 of Section 28.

Description of evidence found

On August 29th, 2012, Anderson Engineering of Minnesota located the Harrison monument 0.1 feet above grade and 1.4 feet east of a 4 inch square wood post. An aluminum sign with survey marker sign is 1.0 foot east of the mark.

No. _____
21803282000

Description of corner and witness monuments, references and accessories used to perpetuate the original or re-established location of this corner:

Witnesses to corner location:

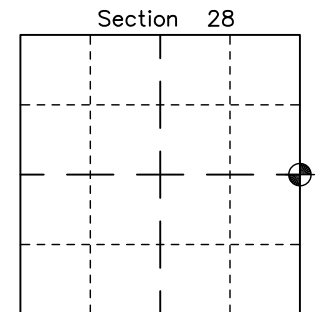
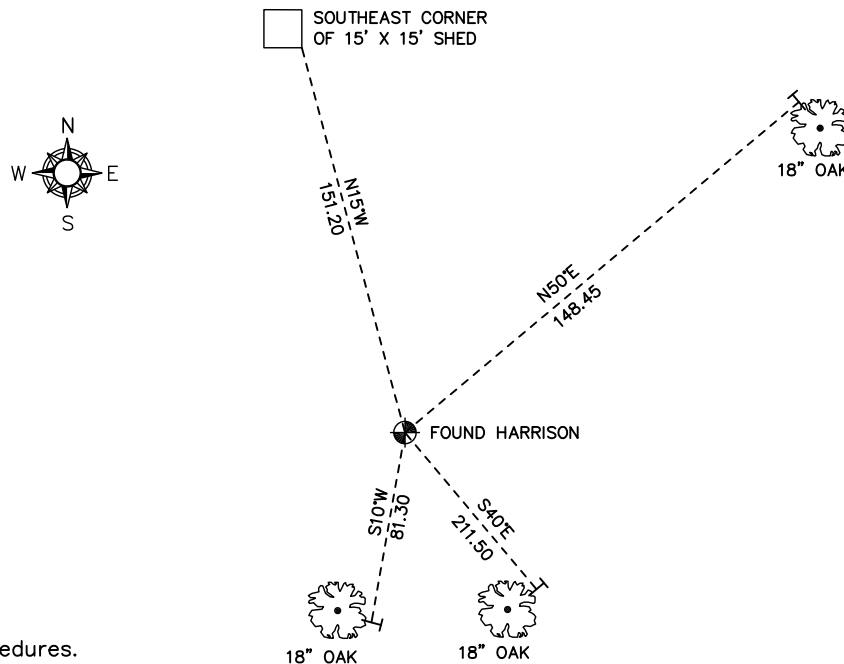
Nick Hillmer
Josh Oslund
Dan Greenwald

MONROE COUNTY
COORDINATE SYSTEM
NAD 1983 (2007)

HARRISON MONUMENT
Northing (Y) 402780.32
Easting (X) 647342.94

Base Station - 22 182W
Northing (Y) 408053.25
Easting (X) 679287.00

All distances are shown in U.S. Survey Feet.
Ties are to 60D nails set in trees.
Bearings are for tie reference purposes only.
Coordinates were derived from RTK GNSS procedures.

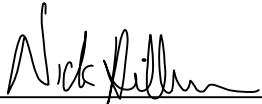


● = LOCATION CORNER
Corner I.D. E 1/4 28
T 18 N R 3 W
Town of La Fayette
Monroe County, WI.

CERTIFICATE

I, Nicholas M. Hillmer, do hereby certify that this document and the data contained herein was prepared by me or under my direct supervision and that I am a duly Licensed Land Surveyor under the laws of the State of Wisconsin.

Dated this 21st day of May, 2013



Nicholas M. Hillmer, P.L.S. 2909
Anderson Engineering of Minnesota, LLC.

CERTIFIED LAND CORNER

History of corner established since Original Government Survey

Kenyon was at this corner in September of 1886. The 1940's McCoy boundary notes show a corner at this location. Feddersen's notes from December 1982 show a McCoy monument at this corner. In November of 1982 William Jung found a broken McCoy boundary marker, removed it, and replaced it with a Harrison marker.

Description of evidence found

On August 29th, 2012, Anderson Engineering of Minnesota located the Harrison monument 0.5 feet below grade. The mark is 0.3 feet west of a north-south barbed wire fence and a 4 inch square wood post with a US government no trespassing sign on one side and a survey marker sign on the opposite side.

No. _____
21803210000

Description of corner and witness monuments, references and accessories used to perpetuate the original or re-established location of this corner:

Witnesses to corner location:

Nick Hillmer
Josh Oslund
Dan Greenwald

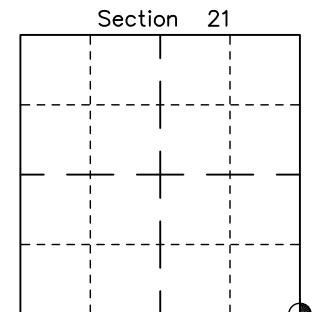
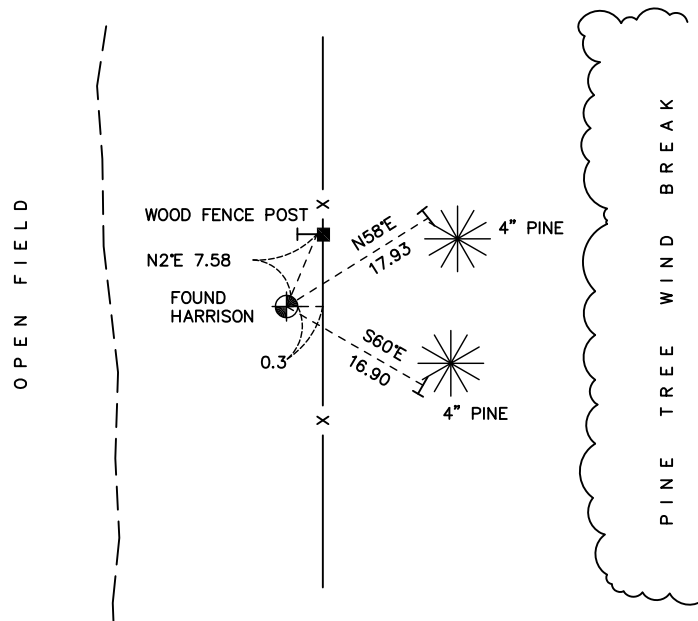


MONROE COUNTY
COORDINATE SYSTEM
NAD 1983 (2007)

HARRISON MONUMENT
Northing (Y) 405433.80
Easting (X) 647305.37

Base Station - 22 182W
Northing (Y) 408053.25
Easting (X) 679287.00

All distances are shown in U.S. Survey Feet.
Ties are to 60D nails set in trees.
Bearings are for tie reference purposes only.
Coordinates were derived from RTK GNSS procedures.

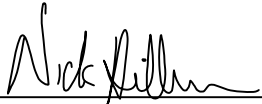


⊙ = LOCATION CORNER
Corner I.D. SE 21
T 18 N R 3 W
Town of La Fayette
Monroe County, WI.

CERTIFICATE

I, Nicholas M. Hillmer, do hereby certify that this document and the data contained herein was prepared by me or under my direct supervision and that I am a duly Licensed Land Surveyor under the laws of the State of Wisconsin.

Dated this 21st day of May, 2013



Nicholas M. Hillmer, P.L.S. 2909
Anderson Engineering of Minnesota, LLC.

CERTIFIED LAND CORNER

History of corner established since Original Government Survey

The 1940's McCoy boundary notes show a corner at this location. Heidecke's map of January 1980 shows a Fort McCoy concrete monument with a brass cap at the corner. Feddersen's notes from December 1982 also show a McCoy marker at this corner. In December of 1982 William Jung found the McCoy marker and accepted it as the corner.

Description of evidence found

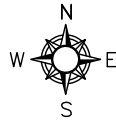
On August 29th, 2012, Anderson Engineering of Minnesota located the McCoy monument, a 4 inch U.S Army Corps of Engineers survey control mark disk stamped MCCOY BOUNDARY set in concrete. The monument is 2 feet north of a 4 inch square wood post with survey maker sign.

No. _____
21803212000

Description of corner and witness monuments, references and accessories used to perpetuate the original or re-established location of this corner:

Witnesses to corner location:

Nick Hillmer
Josh Oslund
Dan Greenwald

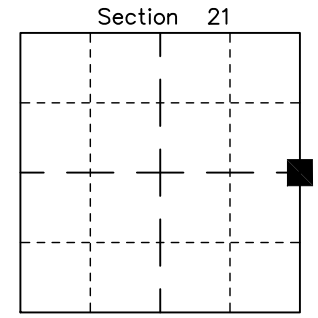
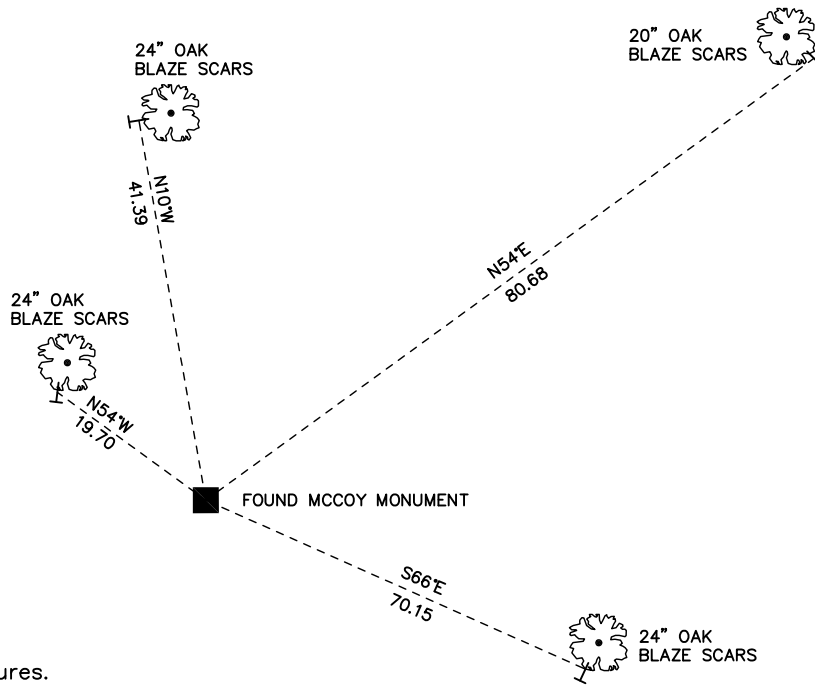


MONROE COUNTY
COORDINATE SYSTEM
NAD 1983 (2007)

MCCOY MONUMENT
Northing (Y) 408062.55
Easting (X) 647320.70

Base Station - 22 182W
Northing (Y) 408053.25
Easting (X) 679287.00

All distances are shown in U.S. Survey Feet.
Ties are to 60D nails set in trees.
Bearings are for tie reference purposes only.
Coordinates were derived from RTK GNSS procedures.

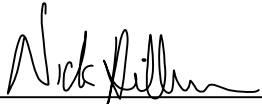


■ = LOCATION CORNER
Corner I.D. E 1/4 21
T 18 N R 3 W
Town of La Fayette
Monroe County, WI.

CERTIFICATE

I, Nicholas M. Hillmer, do hereby certify that this document and the data contained herein was prepared by me or under my direct supervision and that I am a duly Licensed Land Surveyor under the laws of the State of Wisconsin.

Dated this 21st day of May, 2013



Nicholas M. Hillmer, P.L.S. 2909
Anderson Engineering of Minnesota, LLC.

CERTIFIED LAND CORNER

History of corner established since Original Government Survey

The 1940's McCoy boundary notes show a corner at this location. Feddersen's notes of March 1977 and December 1982 show an iron pipe at this corner. In November of 1982, William Jung found the pipe and accepted it as the corner.

Description of evidence found

On August 29th, 2012, Anderson Engineering of Minnesota located the 1 1/2 inch open iron pipe sticking up 18 inches above grade. On April 19th, 2013 Anderson Engineering of Minnesota replaced the pipe with a 30 inch Berntsen aluminum dig monument with a 3 1/4 inch aluminum cap, stamped "FORT MCCOY BOUNDARY" "2013" "ANDERSON ENG. OF MN."

No. _____
21803160000

Description of corner and witness monuments, references and accessories used to perpetuate the original or re-established location of this corner:

Witnesses to corner location:

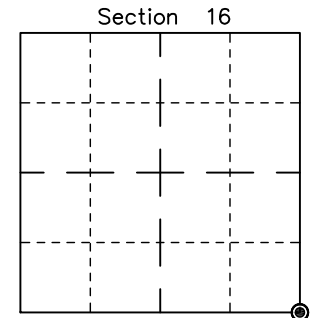
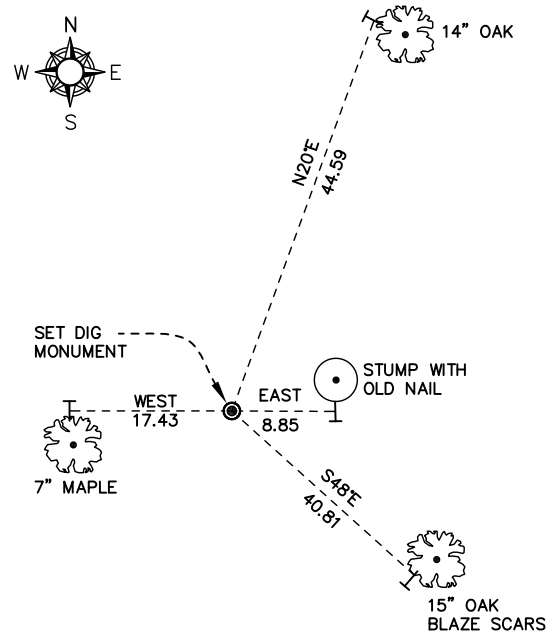
Nick Hillmer
Josh Oslund
Dan Greenwald

MONROE COUNTY
COORDINATE SYSTEM
NAD 1983 (2007)

MCCOY DIG MONUMENT
Northing (Y) 410695.48
Easting (X) 647337.18

Base Station - 22 182W
Northing (Y) 408053.25
Easting (X) 679287.00

All distances are shown in U.S. Survey Feet.
Ties are to 60D nails set in trees.
Bearings are for tie reference purposes only.
Coordinates were derived from RTK GNSS procedures.

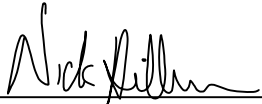


⊙ = LOCATION CORNER
Corner I.D. SE 16
T 18 N R 3 W
Town of La Fayette
Monroe County, WI.

CERTIFICATE

I, Nicholas M. Hillmer, do hereby certify that this document and the data contained herein was prepared by me or under my direct supervision and that I am a duly Licensed Land Surveyor under the laws of the State of Wisconsin.

Dated this 21st day of May, 2013



Nicholas M. Hillmer, P.L.S. 2909
Anderson Engineering of Minnesota, LLC.

CERTIFIED LAND CORNER

History of corner established since Original Government Survey

The 1940's McCoy boundary notes show a corner at this location. In September of 1978, Lawrence Feddersen found this corner to be obliterated. Feddersen disagreed with the McCoy survey and set a Harrison monument on line and midway between the northeast and southeast corners of Section 16.

Description of evidence found

On August 28, 2012, Anderson Engineering of Minnesota located the Harrison monument flush with the ground and 0.3 feet east of a metal fence post with survey marker sign.

No. _____
21803162000

Description of corner and witness monuments, references and accessories used to perpetuate the original or re-established location of this corner:

Witnesses to corner location:

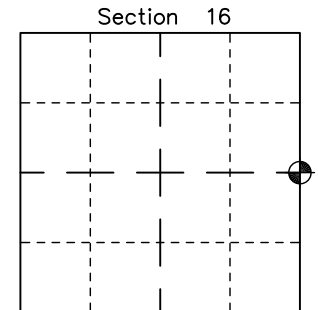
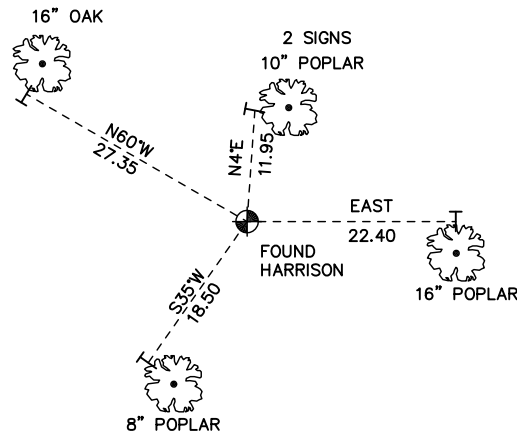
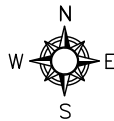
Nick Hillmer
Josh Oslund
Dan Greenwald

MONROE COUNTY
COORDINATE SYSTEM
NAD 1983 (2007)

HARRISON MONUMENT
Northing (Y) 413345.03
Easting (X) 647223.70

Base Station - 22 182W
Northing (Y) 408053.25
Easting (X) 679287.00

All distances are shown in U.S. Survey Feet.
Ties are to 60D nails set in trees.
Bearings are for tie reference purposes only.
Coordinates were derived from RTK GNSS procedures.

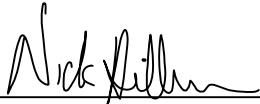


● = LOCATION CORNER
Corner I.D. E 1/4 16
T 18 N R 3 W
Town of La Fayette
Monroe County, WI.

CERTIFICATE

I, Nicholas M. Hillmer, do hereby certify that this document and the data contained herein was prepared by me or under my direct supervision and that I am a duly Licensed Land Surveyor under the laws of the State of Wisconsin.

Dated this 21st day of May, 2013



Nicholas M. Hillmer, P.L.S. 2909
Anderson Engineering of Minnesota, LLC.

CERTIFIED LAND CORNER

History of corner established since Original Government Survey

The 1940's McCoy boundary notes show a corner at this location.

Description of evidence found

On August 29th, 2012 Anderson Engineering of Minnesota located the 4 inch U.S. Army Corps of Engineers survey control mark disk set in concrete 1.3 feet above grade. Concrete is stamped US on west side. The monument was not accepted as the corner. On April 19th, 2013 Anderson Engineering of Minnesota set a 30 inch Berntsen aluminum dig monument with a 3 1/4 inch aluminum cap, stamped "FORT MCCOY BOUNDARY" "2013" ANDERSON ENG. OF MN." The monument was set midway online between the east quarter corner and the center of Section 16.

No. _____
21803162010

Description of corner and witness monuments, references and accessories used to perpetuate the original or re-established location of this corner:

Witnesses to corner location:

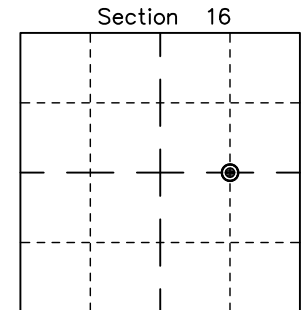
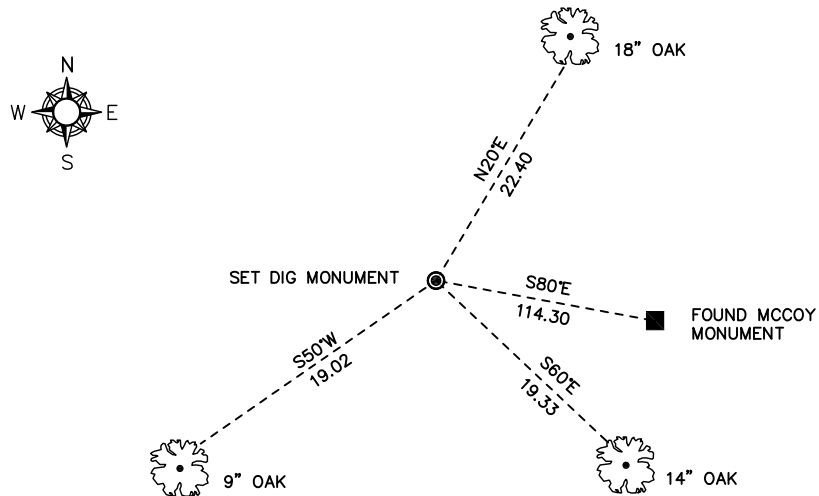
Nick Hillmer
Josh Oslund
Dan Greenwald

MONROE COUNTY
COORDINATE SYSTEM
NAD 1983 (2007)

MCCOY DIG MONUMENT
Northing (Y) 413379.41
Easting (X) 645868.83

Base Station - 22 182W
Northing (Y) 408053.25
Easting (X) 679287.00

All distances are shown in U.S. Survey Feet.
Ties are to 60D nails set in trees.
Bearings are for tie reference purposes only.
Coordinates were derived from RTK GNSS procedures.

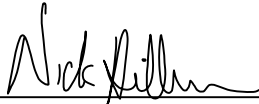


● = LOCATION CORNER
Corner I.D. CE 1/16 16
T 18 N R 3 W
Town of La Fayette
Monroe County, WI.

CERTIFICATE

I, Nicholas M. Hillmer, do hereby certify that this document and the data contained herein was prepared by me or under my direct supervision and that I am a duly Licensed Land Surveyor under the laws of the State of Wisconsin.

Dated this 21st day of May, 2013



Nicholas M. Hillmer, P.L.S. 2909
Anderson Engineering of Minnesota, LLC.

CERTIFIED LAND CORNER

History of corner established since Original Government Survey

The 1940's McCoy boundary notes show a corner at this location.

Description of evidence found

On August 28th, 2012, Anderson Engineering of Minnesota located a 5/8 inch rebar 4 inches above grade. The rebar fit the section breakdown very well. On April 19th, 2013, Anderson Engineering of Minnesota replaced the rebar with a 30 inch Berntsen aluminum dig monument with a 3 1/4 inch aluminum cap, stamped "FORT MCCOY BOUNDARY" "2013" "ANDERSON ENG. OF MN."

No. _____
21803090010

Description of corner and witness monuments, references and accessories used to perpetuate the original or re-established location of this corner:

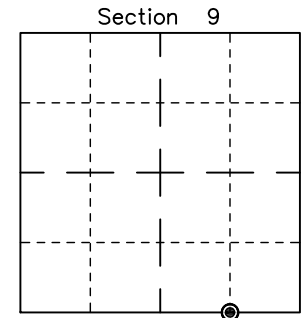
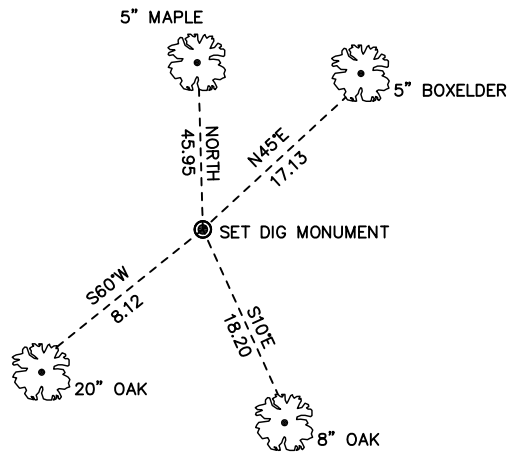
Witnesses to corner location:

Nick Hillmer
Josh Oslund
Dan Greenwald

MONROE COUNTY
COORDINATE SYSTEM
NAD 1983 (2007)

MCCOY DIG MONUMENT
Northing (Y) 416030.65
Easting (X) 645754.56

Base Station - 22 182W
Northing (Y) 408053.25
Easting (X) 679287.00



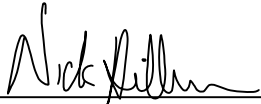
● = LOCATION CORNER
Corner I.D. E 1/16 9
T 18 N R 3 W
Town of La Fayette
Monroe County, WI.

All distances are shown in U.S. Survey Feet.
Ties are to 60D nails set in trees.
Bearings are for tie reference purposes only.
Coordinates were derived from RTK GNSS procedures.

CERTIFICATE

I, Nicholas M. Hillmer, do hereby certify that this document and the data contained herein was prepared by me or under my direct supervision and that I am a duly Licensed Land Surveyor under the laws of the State of Wisconsin.

Dated this 21st day of May, 2013



Nicholas M. Hillmer, P.L.S. 2909
Anderson Engineering of Minnesota, LLC.

CERTIFIED LAND CORNER

History of corner established since Original Government Survey

In September of 1978 Lawrence Feddersen set a Harrison monument on line and midway between the southeast and southwest corners of Section 9.

Description of evidence found

On August 28th, 2012, Anderson Engineering of Minnesota located the Harrison monument flush with the ground and 0.4 feet south of a metal fence post with survey marker sign.

No. _____
21803090020

Description of corner and witness monuments, references and accessories used to perpetuate the original or re-established location of this corner:

Witnesses to corner location:

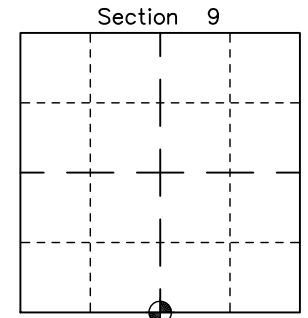
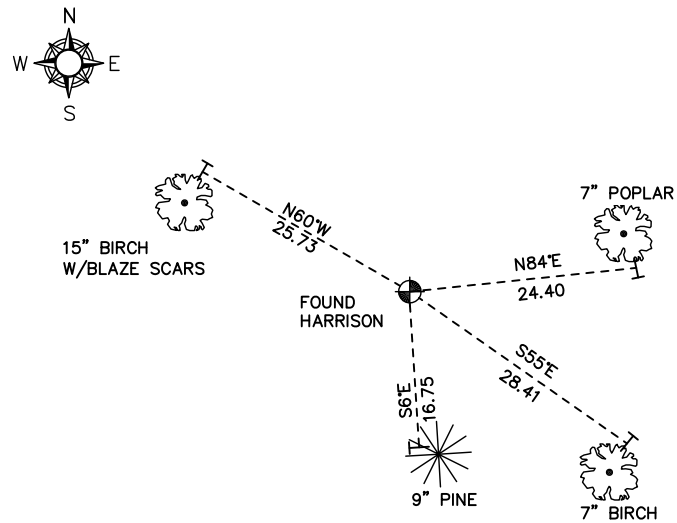
Nick Hillmer
Josh Oslund
Dan Greenwald

MONROE COUNTY
COORDINATE SYSTEM
NAD 1983 (2007)

HARRISON MONUMENT
Northing (Y) 416066.65
Easting (X) 644397.12

Base Station - 22 182W
Northing (Y) 408053.25
Easting (X) 679287.00

All distances are shown in U.S. Survey Feet.
Ties are to 60D nails set in trees.
Bearings are for tie reference purposes only.
Coordinates were derived from RTK GNSS procedures.

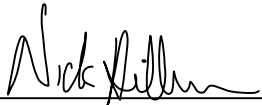


● = LOCATION CORNER
Corner I.D. S 1/4 9
T 18 N R 3 W
Town of La Fayette
Monroe County, WI.

CERTIFICATE

I, Nicholas M. Hillmer, do hereby certify that this document and the data contained herein was prepared by me or under my direct supervision and that I am a duly Licensed Land Surveyor under the laws of the State of Wisconsin.

Dated this 21st day of May, 2013



Nicholas M. Hillmer, P.L.S. 2909
Anderson Engineering of Minnesota, LLC.

CERTIFIED LAND CORNER

History of corner established since Original Government Survey

Harley Sime set an iron pipe at this corner in November of 1965. In September of 1981, William Jung found Sime's iron pipe was disturbed by earth moving equipment. Jung set a Harrison monument on line and equidistant between the section corners.

Description of evidence found

On August 10th, 2012, Anderson Engineering of Minnesota located the Harrison monument flush with the ground and 1 foot southwest of a 4 inch square wood post with survey marker sign. A downed barbed wire fence is 1 foot west of the monument.

No. _____
21803040020

Description of corner and witness monuments, references and accessories used to perpetuate the original or re-established location of this corner:

Witnesses to corner location:

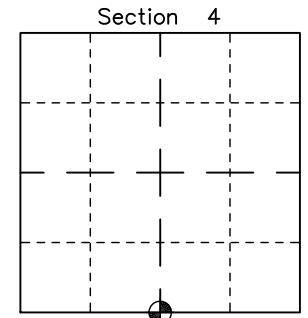
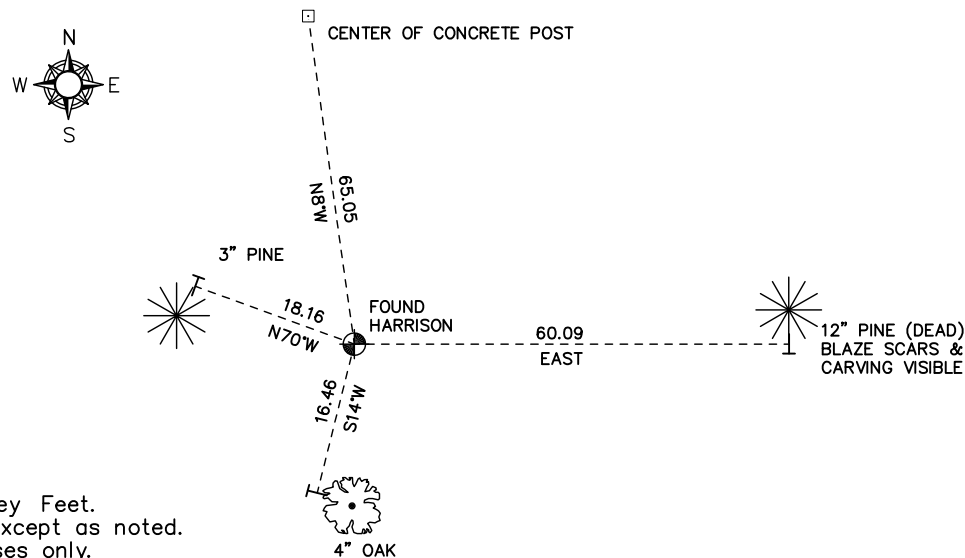
Nick Hillmer
Josh Oslund
Dan Greenwald

MONROE COUNTY
COORDINATE SYSTEM
NAD 1983 (2007)

HARRISON MONUMENT
Northing (Y) 421347.63
Easting (X) 644260.66

Base Station - 22 182W
Northing (Y) 408053.25
Easting (X) 679287.00

All distances are shown in U.S. Survey Feet.
Ties are to 60D nails set in trees, except as noted.
Bearings are for tie reference purposes only.
Coordinates were derived from RTK GNSS procedures.



⊙ = LOCATION CORNER
Corner I.D. S 1/4 4
T 18 N R 3 W
Town of La Fayette
Monroe County, WI.

CERTIFICATE

I, Nicholas M. Hillmer, do hereby certify that this document and the data contained herein was prepared by me or under my direct supervision and that I am a duly Licensed Land Surveyor under the laws of the State of Wisconsin.

Dated this 21st day of May, 2013

Nicholas M. Hillmer, P.L.S. 2909
Anderson Engineering of Minnesota, LLC.

CERTIFIED LAND CORNER

History of corner established since Original Government Survey

Found no recorded history of this corner.

No. _____
21803041020

Description of evidence found

On April 19th, 2013, Anderson Engineering of Minnesota set a 30 inch Berntsen aluminum dig monument with a 3 1/4 inch aluminum cap, stamped "FORT MCCOY BOUNDARY" "2013" "ANDERSON ENG. OF MN." The monument was set midway online between the south quarter corner and the center of Section 4.

Description of corner and witness monuments, references and accessories used to perpetuate the original or re-established location of this corner:

Witnesses to corner location:

Nick Hillmer
Josh Oslund
Dan Greenwald

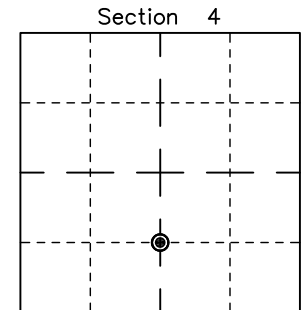
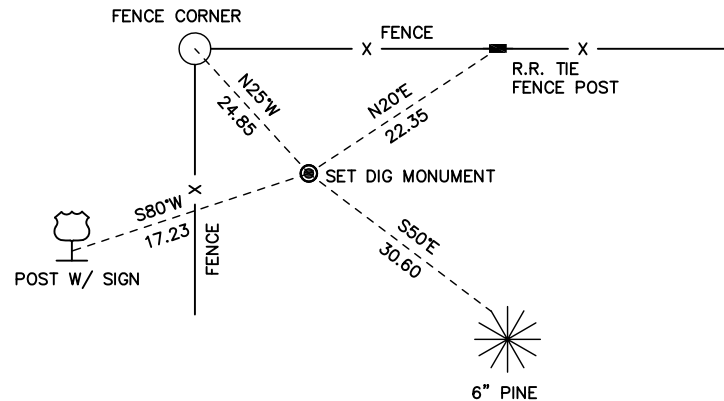
MONROE COUNTY
COORDINATE SYSTEM
NAD 1983 (2007)

MCCOY MONUMENT
Northing (Y) 422667.59
Easting (X) 644291.13

Base Station - 22 182W
Northing (Y) 408053.25
Easting (X) 679287.00



All distances are shown in U.S. Survey Feet.
Ties are to 60D nails.
Bearings are for tie reference purposes only.
Coordinates were derived from RTK GNSS procedures.



⊙ = LOCATION CORNER

Corner I.D. CS 1/16 4

T 18 N R 3 W

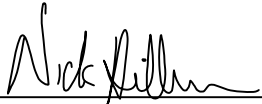
Town of La Fayette

Monroe County, WI.

CERTIFICATE

I, Nicholas M. Hillmer, do hereby certify that this document and the data contained herein was prepared by me or under my direct supervision and that I am a duly Licensed Land Surveyor under the laws of the State of Wisconsin.

Dated this 21st day of May, 2013



Nicholas M. Hillmer, P.L.S. 2909
Anderson Engineering of Minnesota, LLC.

CERTIFIED LAND CORNER

History of corner established since Original Government Survey

Found no history of this corner.

Description of evidence found

On August 10th, 2012, Anderson Engineering of Minnesota located a 3/4 inch steel rod 1 inch above grade halfway down the west side of the berm. The steel rod fits the section breakdown very well. On April 19th, 2013, Anderson Engineering of Minnesota replaced the rod with a 30 inch Berntsen aluminum dig monument with a 3 1/4 inch aluminum cap, stamped "FORT MCCOY BOUNDARY" "2013" "ANDERSON ENG. OF MN."

No. _____
21803041000

Description of corner and witness monuments, references and accessories used to perpetuate the original or re-established location of this corner:

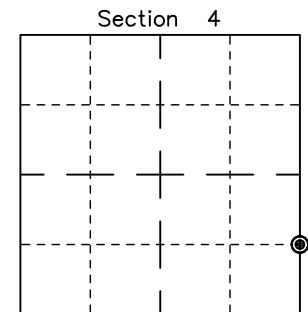
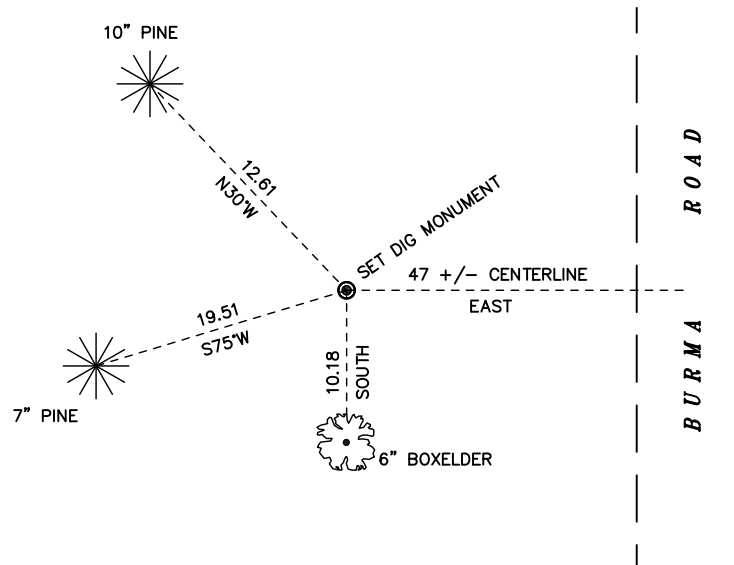
Witnesses to corner location:

Nick Hillmer
Josh Oslund
Dan Greenwald

MONROE COUNTY
COORDINATE SYSTEM
NAD 1983 (2007)

MCCOY DIG MONUMENT
Northing (Y) 422624.93
Easting (X) 646937.35

Base Station - 22 182W
Northing (Y) 408053.25
Easting (X) 679287.00



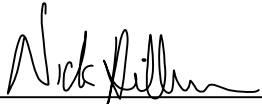
⊙ = LOCATION CORNER
Corner I.D. S 1/16 4
T 18 N R 3 W
Town of La Fayette
Monroe County, WI.

All distances are shown in U.S. Survey Feet.
Ties are to 60D nails set in trees.
Bearings are for tie reference purposes only.
Coordinates were derived from RTK GNSS procedures.

CERTIFICATE

I, Nicholas M. Hillmer, do hereby certify that this document and the data contained herein was prepared by me or under my direct supervision and that I am a duly Licensed Land Surveyor under the laws of the State of Wisconsin.

Dated this 21st day of May, 2013



Nicholas M. Hillmer, P.L.S. 2909
Anderson Engineering of Minnesota, LLC.

CERTIFIED LAND CORNER

History of corner established since Original Government Survey

On June 9th 1981, William Jung set a Harrison monument on line between the Section corners at a distance between them proportionate to the original government notes. Jung also set a 4 inch square treated wood post with sign, up 5 feet +/-, southeast of the corner.

Description of evidence found

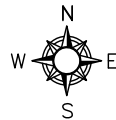
On August 10th, 2012, Anderson Engineering of Minnesota located the Harrison monument just below grade and 0.8 feet northwest of a 4 inch square wood post with survey marker sign.

No. _____
21803042000

Description of corner and witness monuments, references and accessories used to perpetuate the original or re-established location of this corner:

Witnesses to corner location:

Nick Hillmer
Josh Oslund
Dan Greenwald

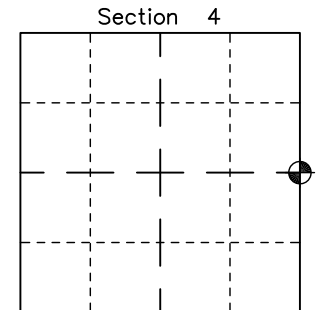
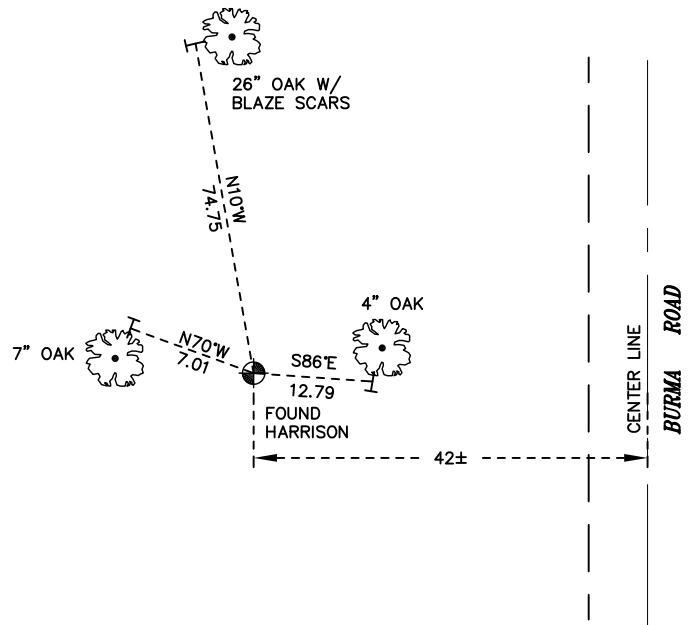


MONROE COUNTY
COORDINATE SYSTEM
NAD 1983 (2007)

HARRISON MONUMENT
Northing (Y) 423946.12
Easting (X) 646964.94

Base Station - 22 182W
Northing (Y) 408053.25
Easting (X) 679287.00

All distances are shown in U.S. Survey Feet.
Ties are to 60D nails set in trees.
Bearings are for tie reference purposes only.
Coordinates were derived from RTK GNSS procedures.

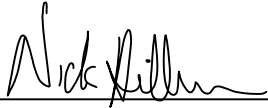


⊕ = LOCATION CORNER
Corner I.D. E 1/4 4
T 18 N R 3 W
Town of La Fayette
Monroe County, WI.

CERTIFICATE

I, Nicholas M. Hillmer, do hereby certify that this document and the data contained herein was prepared by me or under my direct supervision and that I am a duly Licensed Land Surveyor under the laws of the State of Wisconsin.

Dated this 21st day of May, 2013



Nicholas M. Hillmer, P.L.S. 2909
Anderson Engineering of Minnesota, LLC.

CERTIFIED LAND CORNER

History of corner established since Original Government Survey

Camp McCoy boundary survey map 47-018-037-A47 of 1962 shows this corner as a 1 inch pipe.

No. 21803362000

Description of evidence found

On January 11th, 2013, Anderson Engineering of Minnesota located the 1 inch iron pipe 1.0 foot above grade. The pipe is accepted as the best available evidence.

Description of corner and witness monuments, references and accessories used to perpetuate the original or re-established location of this corner:

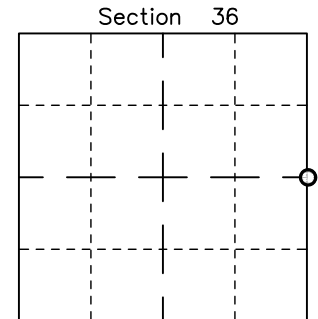
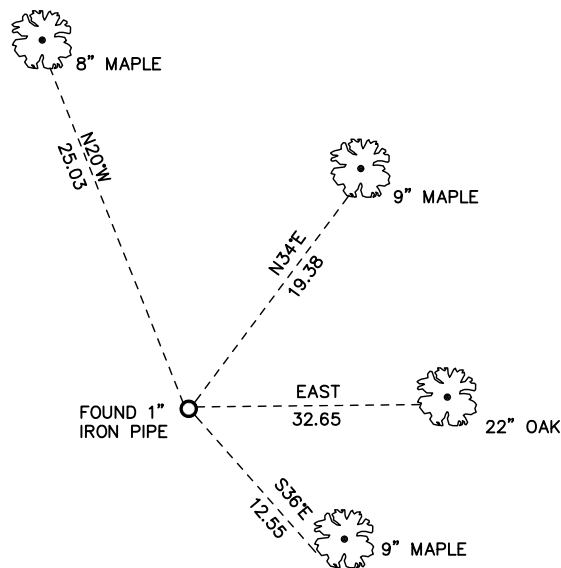
Witnesses to corner location:

Nick Hillmer
Josh Oslund
Dan Greenwald

MONROE COUNTY
COORDINATE SYSTEM
NAD 1983 (2007)

1 INCH PIPE
Northing (Y) 397414.08
Easting (X) 663211.54

Base Station - 22 182W
Northing (Y) 408053.25
Easting (X) 679287.00



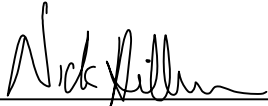
○ = LOCATION CORNER
Corner I.D. E 1/4 36
T 18 N R 3 W
Town of La Fayette
Monroe County, WI.

All distances are shown in U.S. Survey Feet.
Ties are to 60D nails set in trees.
Bearings are for tie reference purposes only.
Coordinates were derived from RTK GNSS procedures.

CERTIFICATE

I, Nicholas M. Hillmer, do hereby certify that this document and the data contained herein was prepared by me or under my direct supervision and that I am a duly Licensed Land Surveyor under the laws of the State of Wisconsin.

Dated this 21st day of May, 2013



Nicholas M. Hillmer, P.L.S. 2909
Anderson Engineering of Minnesota, LLC.

CERTIFIED LAND CORNER

History of corner established since Original Government Survey

McCoy records, dated November 9, 1962 show a high concrete monument at this location.

Description of evidence found

On May 6th, 2013, Anderson Engineering of Minnesota located an axle 0.5 feet below grade in Hableman's cranberry bog. The McCoy monument was replaced with the axle per the lead foreman of Hableman's cranberry bog whom explained that the old Fort McCoy concrete monument was an obstruction to operations thus replaced with the axle. The axle was accepted as the best available evidence.

No. 21803250000

Description of corner and witness monuments, references and accessories used to perpetuate the original or re-established location of this corner:

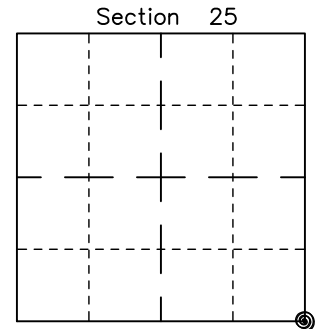
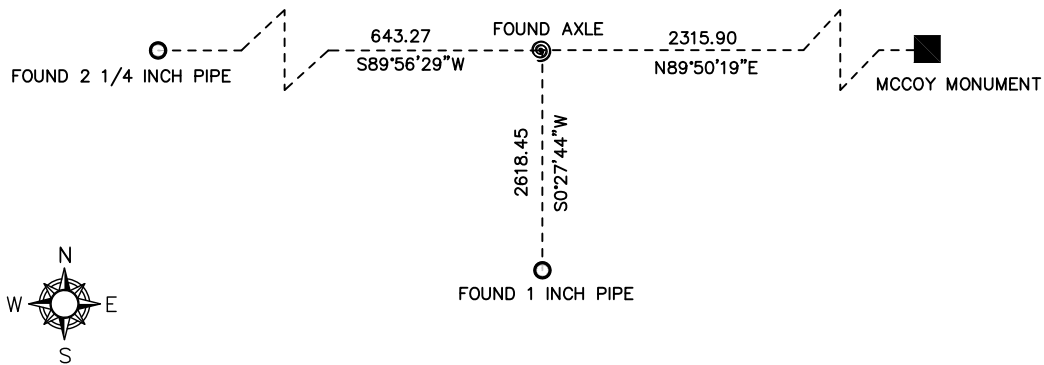
Witnesses to corner location:

Nick Hillmer
Josh Oslund
Dan Greenwald

MONROE COUNTY
COORDINATE SYSTEM
NAD 1983 (2007)

AXLE
Northing (Y) 400032.45
Easting (X) 663232.66

Base Station - 22 182W
Northing (Y) 408053.25
Easting (X) 679287.00



⊙ = LOCATION CORNER
Corner I.D. SE 25
T 18 N R 3 W
Town of La Fayette
Monroe County, WI.

All distances are shown in U.S. Survey Feet.
Bearings are for tie reference purposes only.
Coordinates were derived from RTK GNSS procedures.