

CERTIFICATE

I, Nicholas M. Hillmer, do hereby certify that this document and the data contained herein was prepared by me or under my direct supervision and that I am a duly Licensed Land Surveyor under the laws of the State of Wisconsin.

Dated this 21st day of May, 2013



Nicholas M. Hillmer, P.L.S. 2909
Anderson Engineering of Minnesota, LLC.

CERTIFIED LAND CORNER

History of corner established since Original Government Survey

The 1940's McCoy boundary notes show a corner at this location. Feddersen set a 1 inch pipe next to a stone in 1977. William Jung found the stone and pipe in 1982. William Bulawa did not find the stone or pipe due to logging in the area. In 2004 Bulawa set the corner from Jung's notes and old surveys in the area.

Description of evidence found

On March 13th, 2013, Anderson Engineering of Minnesota located the Harrison monument in a valley swale. A 4 inch square wood post is 0.8 feet north and a witness post with survey marker sign is 0.95 feet south of the monument.

No. 21803090000



Description of corner and witness monuments, references and accessories used to perpetuate the original or re-established location of this corner:

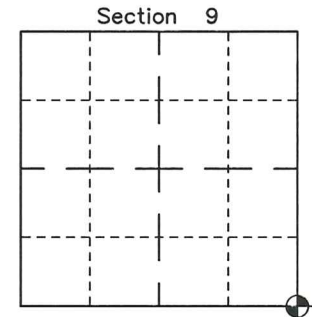
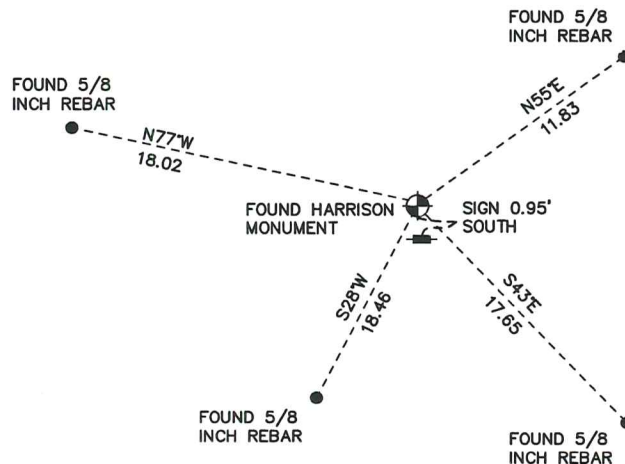
Witnesses to corner location:

Nick Hillmer
Josh Oslund
Dan Greenwald

MONROE COUNTY
COORDINATE SYSTEM
NAD 1983 (2007)

HARRISON MONUMENT
Northing (Y) 415994.64
Easting (X) 647112.01

Base Station - 22 182W
Northing (Y) 408053.25
Easting (X) 679287.00



⊕ = LOCATION CORNER
Corner I.D. SE 9
T 18 N R 3 W
Town of La Fayette
Monroe County, WI.

All distances are shown in U.S. Survey Feet.
Bearings are for tie reference purposes only.
Coordinates were derived from RTK GNSS procedures.

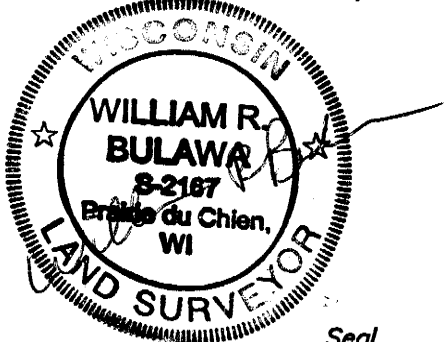
CERTIFIED LAND CORNER

STATE OF WISCONSIN) S.S.
COUNTY OF MONROE)

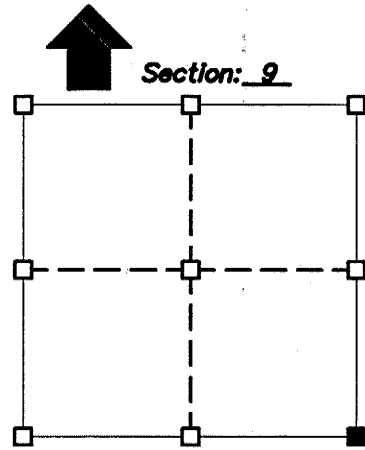
I, WILLIAM R. BULAWA, do hereby certify that on the 9th day of April, 2004, I found (evidence/~~no evidence~~) of the SE corner of Section 9, T 18 N, R 3 W, Fourth Principal Meridian, and I re-established said corner according to the Wisconsin Statutes as shown and described hereon.

Dated this 16th day of April, 2004

William R. Bulawa, R.L.S. No. S-2167



Seal



■ = Corner Location
T 18 N R 3 W
Town of: LaFayette

History of original corner establishment:

Camp McMoy boundary survey notes on April, 1945 called for a stone at the corner. Feddersen set a 1" pipe next to stone in 1977. William C. Jung found the stone and pipe as shown on his certified land corner sheet number 47, 1982

Description of corner evidence found:

There was a lot of logging in the area and found the 1" pipe called for in old tie sheets pulled out of the ground. All of Jung's ties are gone. Re-set section corner by old section summaries, and survey's in the area.

Description of corner and witness monuments, references and accessories used to perpetrate the original or re-established location of this corner:

Witnesses to corner location:

Scott Dischler
Eric Brey

Sketch: Not to Scale



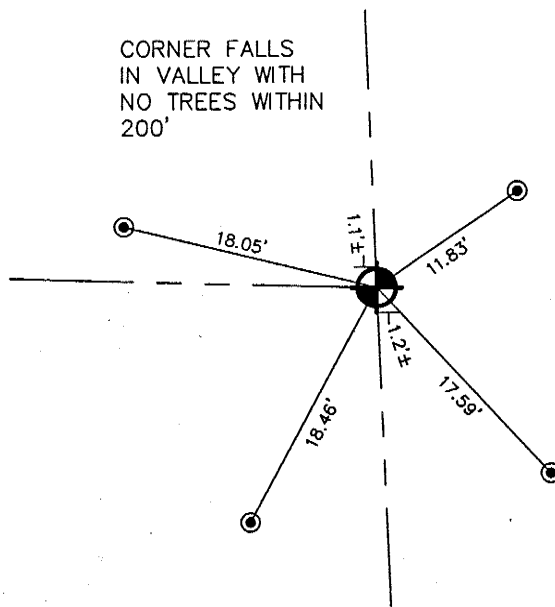
Set a Monroe County Harrison Monument



SET A 3/4" x 24" IRON ROD
1.50 LBS./LIN. FT.



Gov't Sign



Horizontal:

Vertical:

| Corner | East (X) | North (Y) | Elevation (Z) | Zone |
|-------------------|----------|-----------|---------------|------|
| Control Sta. Name | | | | |

21803090000

DATA SHEET
SECTION 9, T18N, R3W
TOWN OF LAFAYETTE, MONROE COUNTY, WISCONSIN.

