

21803062000

I, Garold A. Sime, do hereby certify that on the 18th day of September 1991, I found ~~(evidence)~~ (no evidence) of the E 1/4 corner of Section 6, T 18 N, R 3 W Fourth Principal Meridian, and I re-established said corner according to the Wisconsin Statutes as shown and described hereon.

Dated this 23rd day of Sept. 1991.

Garold A. Sime

Monroe County Surveyor
Title

History of corner establishment since Original Government Survey

W. Kenyon was at this corner in June of 1895.

Description of corner evidence found:

I established this corner at the prorated distance from the Northeast and Southeast Section corners and in the existing north - south fence line.

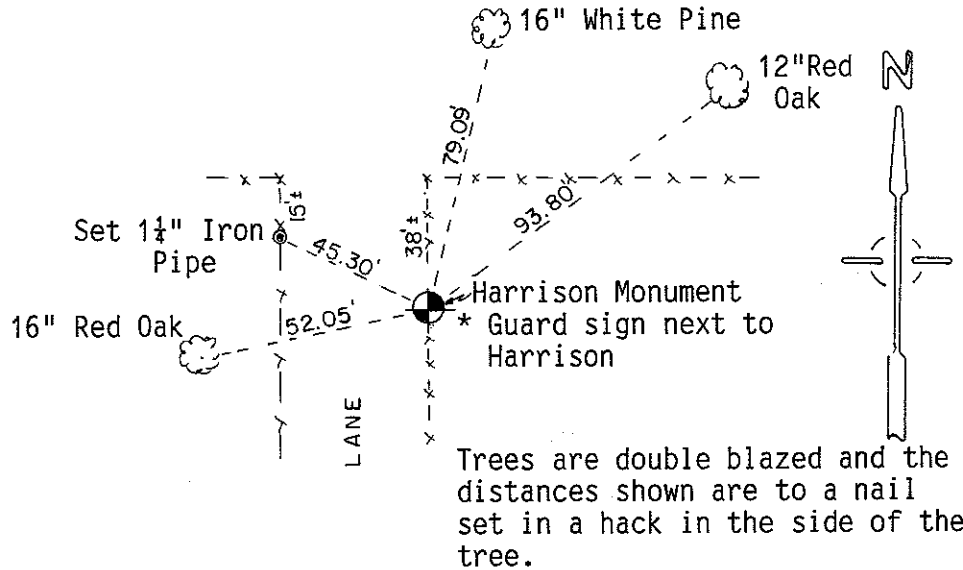
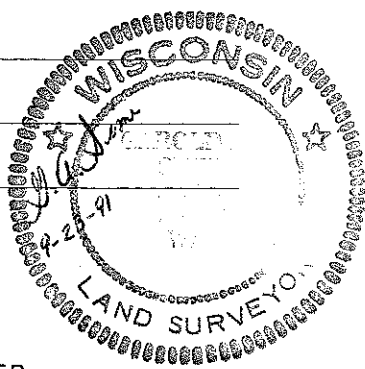
Description of corner and witness monuments, references and accessories used to perpetuate the original or re-established location of this corner:

Set Cast Iron Harrison Monument at 1/4 corner.
Set guard sign next to Harrison

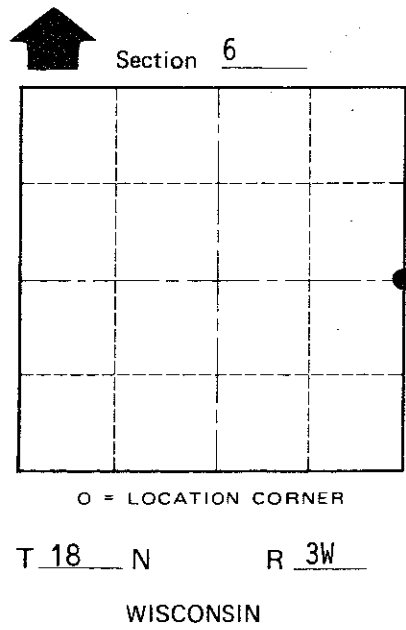
Witnesses to corner location:

Garold A. Sime, R.L.S.

John Kenworthy



Trees are double blazed and the distances shown are to a nail set in a hack in the side of the tree.



COUNTY SURVEYOR FORM NO. 1

SURVEY CONTROL ORDER

Horizontal	_____
Vertical	_____

WISCONSIN COORDINATE SYSTEM

Corner	East (X)	North (Y)	Elevation (Z)	Zone
Control Sta. Name				

~~City, Village~~ or Town of LaFayette

County of Monroe