

I, William C. Jung, do hereby certify that on the 6th day of November 1978, I found (evidence) (no evidence) of the N<sup>1</sup>/<sub>4</sub> corner of Section 7, T 18 N, R 3 W, Fourth Principal Meridian, and I re-established said corner according to the Wisconsin Statutes as shown and described hereon.

Dated this 4th day of Jan. 1979.

William C. Jung, R.L.S. 1323  
Crew Chief, County Surveyor's  
 Title Office

History of original corner establishment:

No known recorded history since the original government survey.

Description of corner evidence found:

Set the corner on line and proportionately between the section corners.

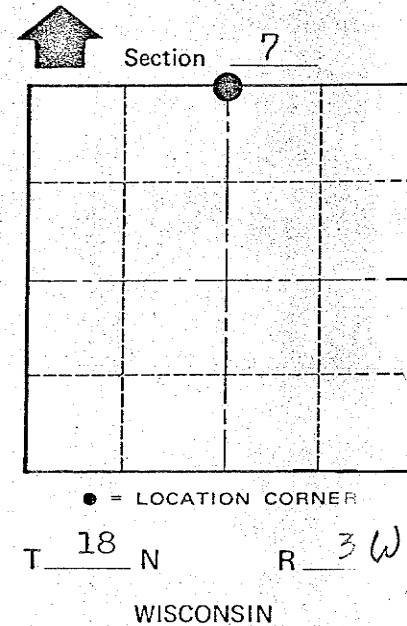
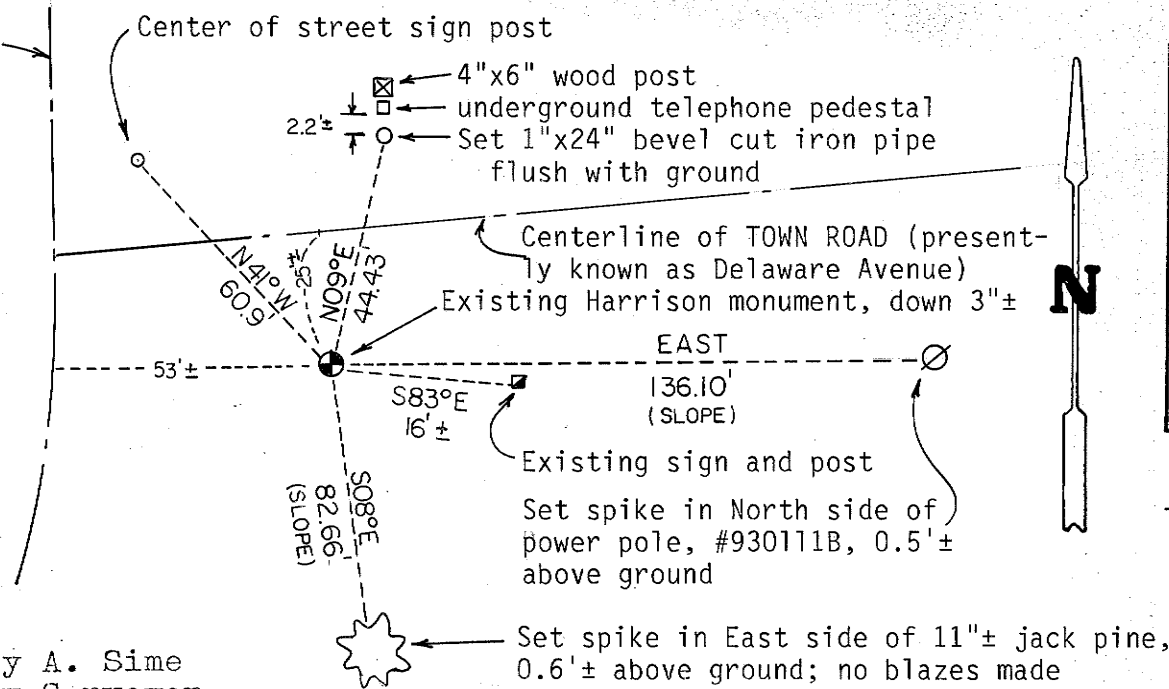
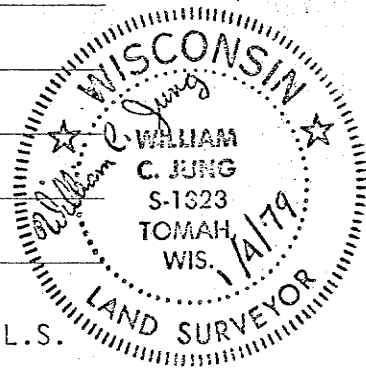
UPDATE: Relocated this corner and found the monument to be in good condition. Two of the original ties were destroyed. Established new ties as shown below.

Douglas J. Malliet, R.L.S. #1266  
 27 February 1997

Description of corner and witness monuments, references and accessories used to perpetuate the original or re-established location of this corner:

Witnesses to corner location:

W. Jung  
R. Lamb  
D. Wilhite



CREW: Douglas J. Malliet, R.L.S.

Matthew Schriever  
 February 1997

Approved by: Harley A. Sime  
 County Surveyor

WISCONSIN COORDINATE SYSTEM

Control Sta. Name	East (X)	North (Y)	Elevation (Z)	Zone
MALLIET Horizontal S-1266				
TOMAH, Vertical				
2/2/97				

City, Village or Town Lafayette  
 County of Monroe

COUNTY SURVEYOR FORM NO. 1

