

CERTIFICATE

CERTIFIED LAND CORNER

No. 15A

21803052020

I, William C. Jung, do hereby certify that on the 10th day of June 19 81, I found (no evidence) of the C 1/4 corner of Section 5, T 18 N, R 3 W, Fourth Principal Meridian, and I re-established said corner according to the Wisconsin Statutes as shown and described hereon.

Dated this 28th day of August 19 81.

William C. Jung
Registered Land Surveyor
Title

History of original corner establishment:

Harley Sime set an iron pipe at his computed Center 1/4 Corner in October of 1959.

Description of corner evidence found:

Set the corner at the intersection of the 1/4 lines as per law.

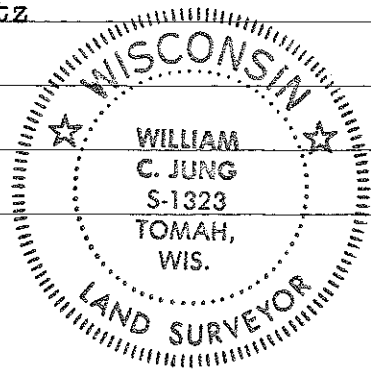
Description of corner and witness monuments, references and accessories used to perpetuate the original or re-established location of this corner:

William C. Jung

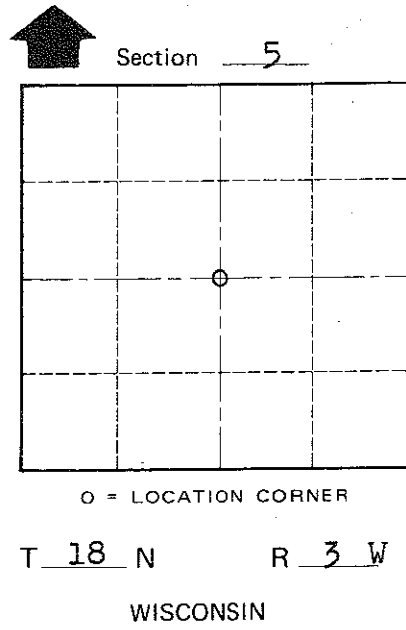
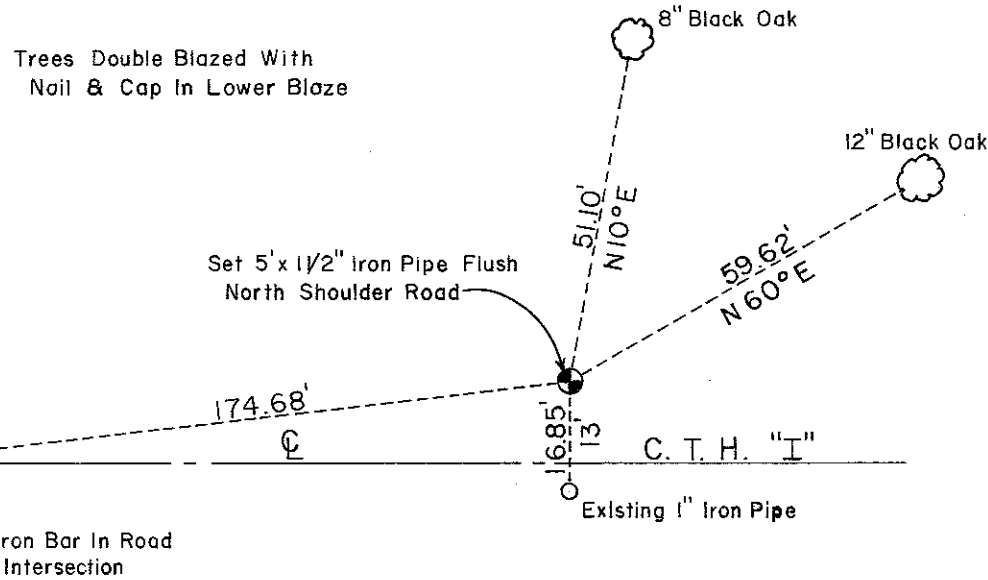
Witnesses to corner location:

W. Jung

C. Pietz



COUNTY SURVEYOR FORM NO. 1



Approved: **HARLEY A. SIME**
MONROE CO. SURVEYOR

SURVEY CONTROL ORDER

Horizontal	_____
Vertical	_____

WISCONSIN COORDINATE SYSTEM

Corner	East (X)	North (Y)	Elevation (Z)	Zone
Control Sta. Name				

Lafayette Town
Monroe County of
Wisconsin