

CERTIFICATE

I, Nicholas M. Hillmer, do hereby certify that this document and the data contained herein was prepared by me or under my direct supervision and that I am a duly Licensed Land Surveyor under the laws of the State of Wisconsin.

Dated this 21st day of May, 2013

Nicholas M. Hillmer, P.L.S. 2909
Anderson Engineering of Minnesota, LLC.

CERTIFIED LAND CORNER

History of corner established since Original Government Survey

Harley Sime was at this corner in October of 1959. In June of 1981, William Jung did not find a monument at this location. Jung set a 8 foot by 2 3/4 inch iron pipe on line between the section corners at a distance between them proportionate to the original notes.

Description of evidence found

On February 27th, 2013, Anderson Engineering of Minnesota located the 2 3/4 inch pipe that rises 3.3 feet above the marshy ground.

No. 21803052000



Description of corner and witness monuments, references and accessories used to perpetuate the original or re-established location of this corner:

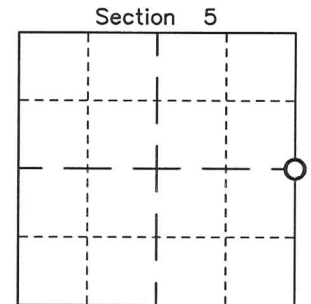
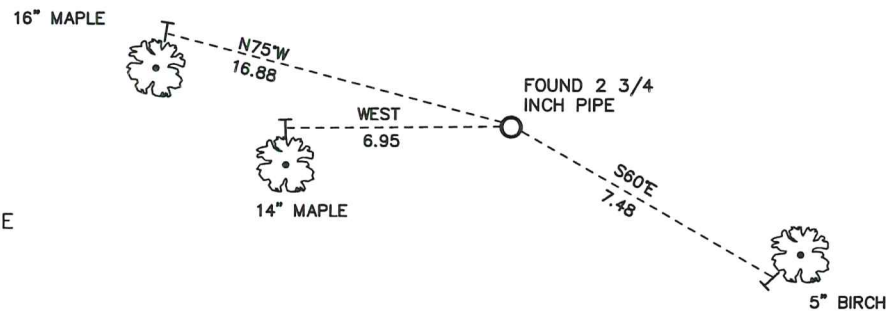
Witnesses to corner location:

Nick Hillmer
Josh Oslund
Dan Greenwald

MONROE COUNTY
COORDINATE SYSTEM
NAD 1983 (2007)

2 3/4 INCH PIPE
Northing (Y) 424029.00
Easting (X) 641678.16

Base Station - 22 182W
Northing (Y) 408053.25
Easting (X) 679287.00



○ = LOCATION CORNER
Corner I.D. E 1/4 5
T 18 N R 3 W
Town of La Fayette
Monroe County, WI.

All distances are shown in U.S. Survey Feet.
Ties are to 60D nails set in trees.
Bearings are for tie reference purposes only.
Coordinates were derived from RTK GNSS procedures.

CERTIFICATE

CERTIFIED LAND CORNER

No. 16

21803052000

I, William C. Jung, do hereby certify that on the 10th day of June 1981, I found ~~(no evidence)~~ (no evidence) of the East 1/4 corner of Section 5, T 18 N, R 3 W, Fourth Principal Meridian, and I re-established said corner according to the Wisconsin Statutes as shown and described hereon.

History of original corner establishment:

Harley Sime was at this corner in October of 1959.

Dated this 28th day of August 1981.

Description of corner evidence found:

Set the corner on line between the section corners and at a distance between them proportionate to the original government notes. If Sime set a pipe at this corner, I could not find it nor any other monument that might have been set.

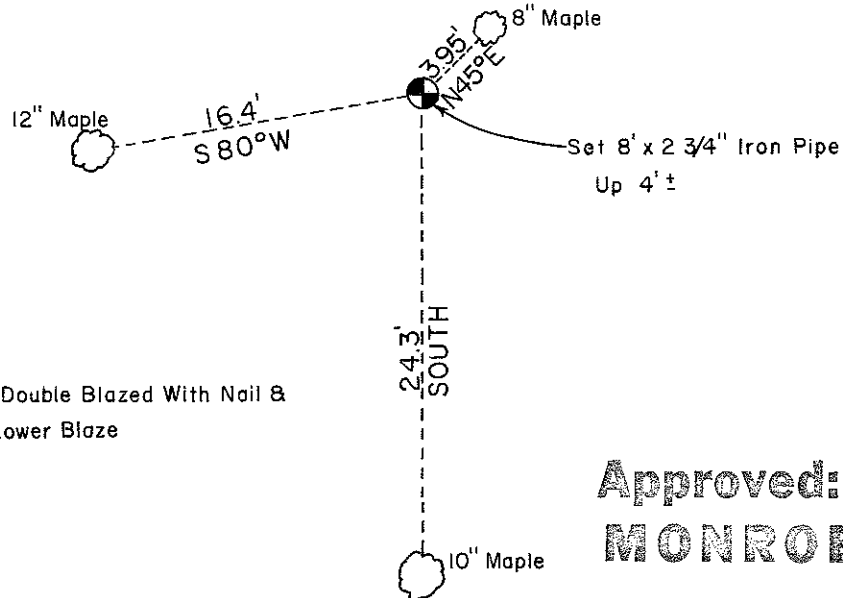
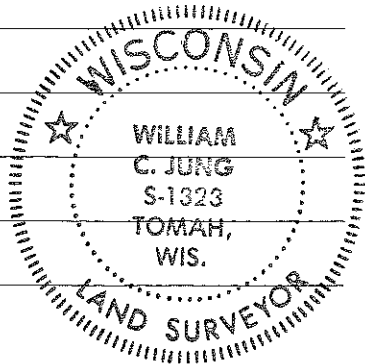
William C. Jung
Registered Land Surveyor
Title

Description of corner and witness monuments, references and accessories used to perpetuate the original or re-established location of this corner:

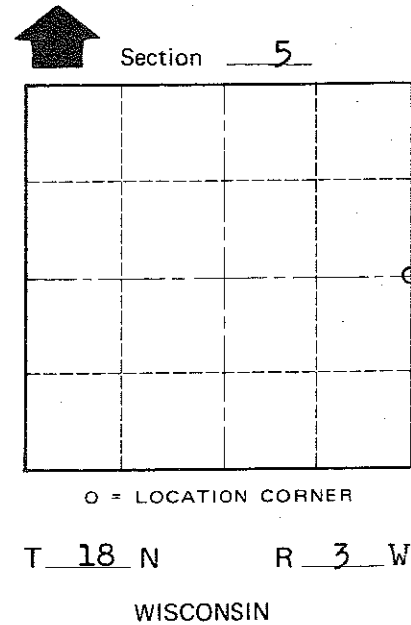
William C. Jung

Witnesses to corner location:

W. Jung
C. Pietz



Trees Double Blazed With Nail & Cap in Lower Blaze



O = LOCATION CORNER

T 18 N R 3 W
WISCONSIN

Approved: **HARLEY A. SIME**
MONROE CO. SURVEYOR

SURVEY CONTROL ORDER

Horizontal _____
Vertical _____

WISCONSIN COORDINATE SYSTEM

Corner	East (X)	North (Y)	Elevation (Z)	Zone
Control Sta. Name				

~~any Village~~ Town Lafayette
County of Monroe
Wisconsin

COUNTY SURVEYOR FORM NO. 1