

CERTIFICATE

UPDATED
CERTIFIED LAND CORNER

No. 30

21803050020

I, Lawrence A. Feddersen, do hereby certify that on the 7th day of September 1978, I found ~~(no evidence)~~ (no evidence) of the N $\frac{1}{2}$ corner of Section 8, T 18 N, R 3 W, Fourth Principal Meridian, and I re-established said corner according to the Wisconsin Statutes as shown and described hereon.

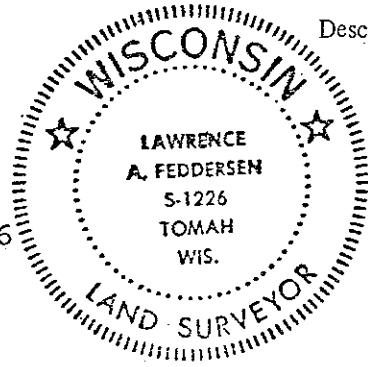
History of original corner establishment:

No subsequent history of corner perpetuation since the original U.S. Government Survey.

Dated this 13 day of Sept 1978.

Lawrence A. Feddersen

REGISTERED LAND SURVEYOR S-1226
Title



Description of corner evidence found:

This corner was re-established on line and midway between the NW and NE corners of Section 8. This location matches well with the occupied North-South quarterline.

COUNTY SURVEYOR FORM NO. 1

Description of corner and witness monuments, references and accessories used to perpetuate the original or re-established location of this corner:

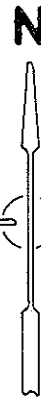
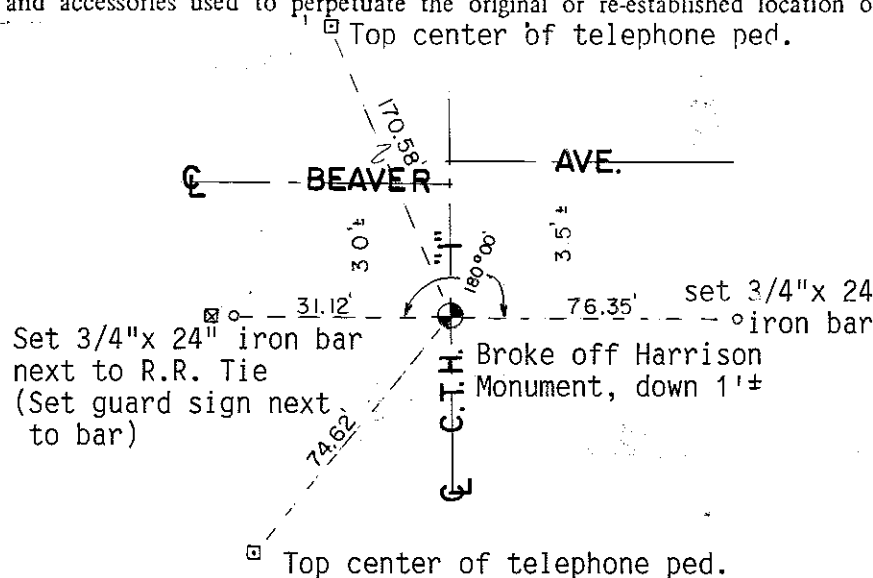
□ Top center of telephone ped.

Witnesses to corner location:

Lawrence A. Feddersen

Douglas J. Malliet

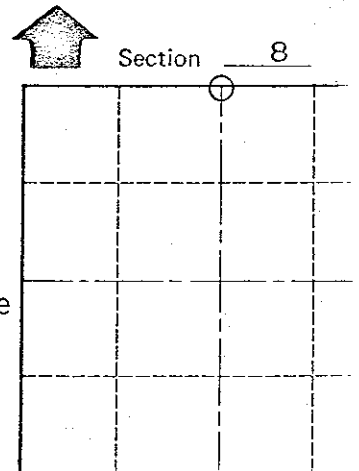
Steve Towne



Note: Corner was broke off during highway construction. I reestablished this corner from ties that were taken prior to the construction. All original ties had also been destroyed.

Crew: Garold A. Sime
Monroe Co. Surveyor
John Kenworthy
Brian Forsythe

October 10th, 1989



○ = LOCATION CORNER

T 18 N R 3 W

WISCONSIN

SURVEY CONTROL ORDER

Horizontal _____

Vertical _____

WISCONSIN COORDINATE SYSTEM

Corner	East (X)	North (Y)	Elevation (Z)	Zone
Control Sta. Name				

~~CHY XXV~~ Town of LAFAYETTE

County of MONROE

CERTIFICATE

CERTIFIED LAND CORNER

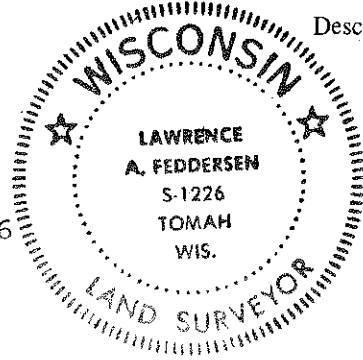
No. 30

I, Lawrence A. Feddersen, do hereby certify that on the 7th day of September 19 78, I found ~~(evidence)~~ (no evidence) of the N¹/₄ corner of Section 8, T 18 N, R 3 W, Fourth Principal Meridian, and I re-established said corner according to the Wisconsin Statutes as shown and described hereon.

Dated this 13 day of Sept 19 78.

Lawrence A. Feddersen

REGISTERED LAND SURVEYOR S-1226
Title



History of original corner establishment:

No subsequent history of corner perpetuation since the original U.S. Government Survey.

Description of corner evidence found:

This corner was re-established on line and midway between the NW and NE corners of Section 8. This location matches well with the occupied North-South quarterline.

COUNTY SURVEYOR FORM NO. 1

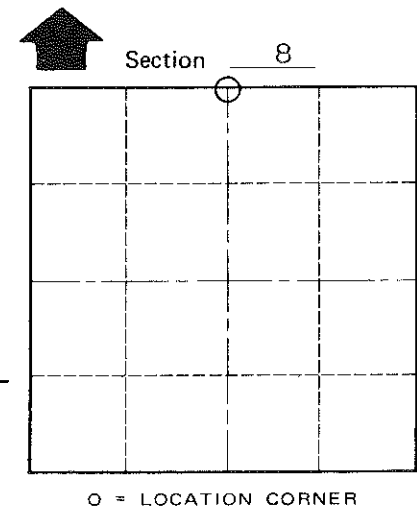
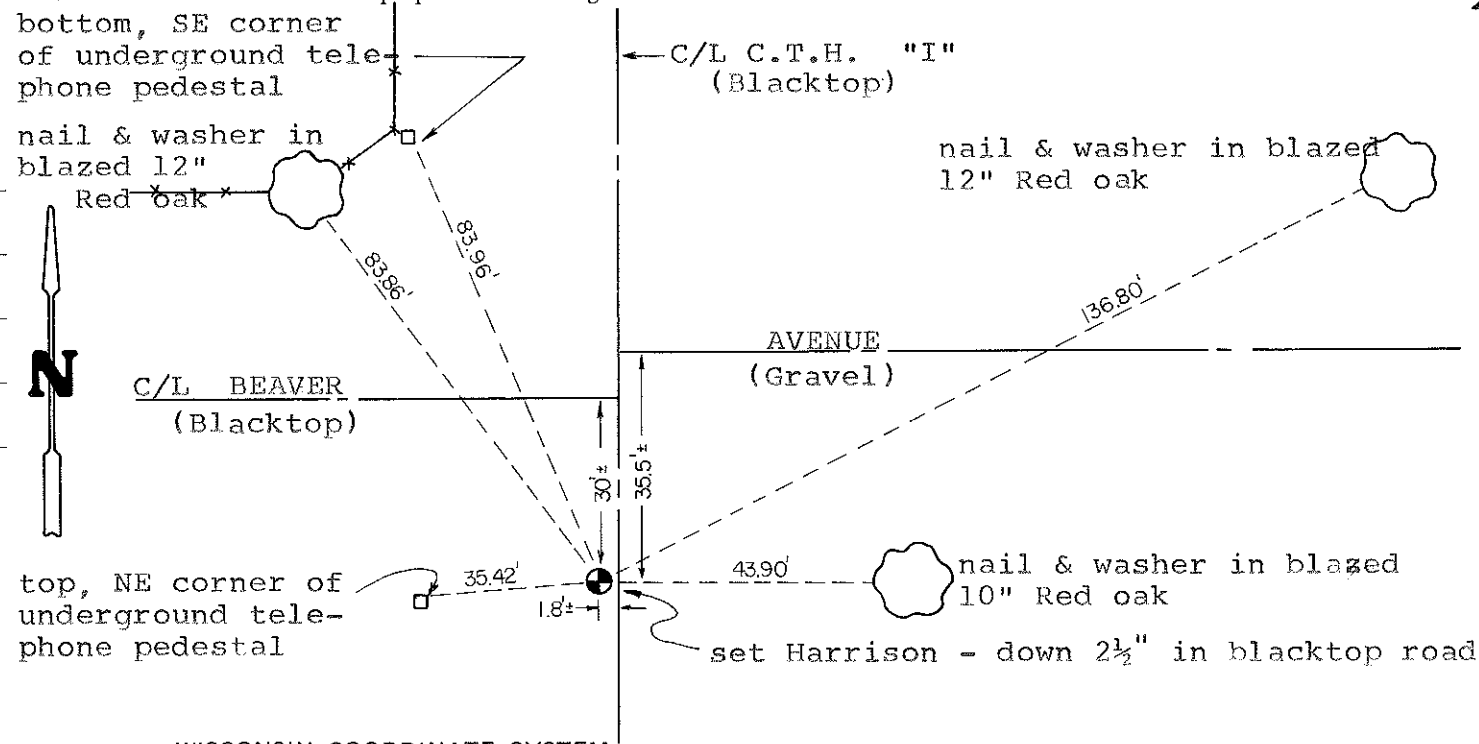
Description of corner and witness monuments, references and accessories used to perpetuate the original or re-established location of this corner:

Witnesses to corner location:

Lawrence A. Feddersen

Douglas J. Malliet

Steve Towne



T 18 N R 3 W
WISCONSIN

SURVEY CONTROL ORDER

Horizontal	_____
Vertical	_____

WISCONSIN COORDINATE SYSTEM

Corner	East (X)	North (Y)	Elevation (Z)	Zone
Control Sta. Name				

~~City, Village or Town of~~ LAFAYETTE

County of MONROE