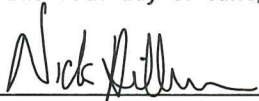


CERTIFICATE

I, Nicholas M. Hillmer, do hereby certify that this document and the data contained herein was prepared by me or under my direct supervision and that I am a duly Licensed Land Surveyor under the laws of the State of Wisconsin.

Dated this 10th day of June, 2013



Nicholas M. Hillmer, P.L.S. 2909
Anderson Engineering of Minnesota, LLC.

CERTIFIED LAND CORNER

History of corner established since Original Government Survey

Harley Sime found an axle at this corner in November 1965. Larry Feddersen found and used this axle in March of 1977. William Jung found the axle and replaced it with a Harrison monument in August of 1981.

Description of evidence found

On February 27th, 2013, Anderson Engineering of Minnesota located the Harrison monument 0.1 feet above grade and 1.5 feet west of the fence line.

No. 21803050000



Description of corner and witness monuments, references and accessories used to perpetuate the original or re-established location of this corner:

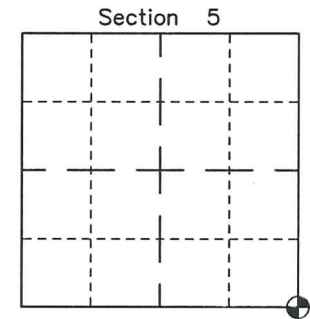
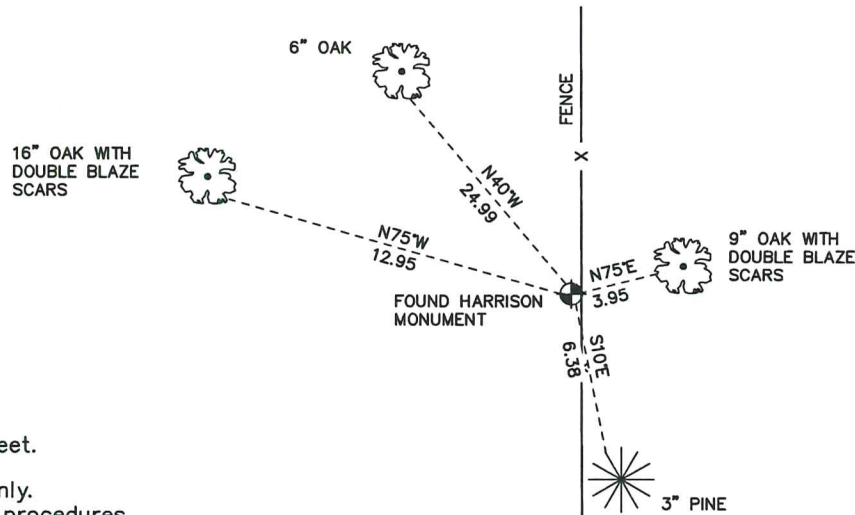
Witnesses to corner location:

Nick Hillmer
Josh Oslund
Dan Greenwald

MONROE COUNTY
COORDINATE SYSTEM
NAD 1983 (2007)

HARRISON MONUMENT
Northing (Y) 421392.07
Easting (X) 641610.86

Base Station - 22 182W
Northing (Y) 408053.25
Easting (X) 679287.00



⊕ = LOCATION CORNER
Corner I.D. SE 5
T 18 N R 3 W
Town of La Fayette
Monroe County, WI.

All distances are shown in U.S. Survey Feet.
Ties are to 60D nails set in trees.
Bearings are for tie reference purposes only.
Coordinates were derived from RTK GNSS procedures.

21803050000

I, William C. Jung, do hereby certify that on the 9th day of June 19 81, I found (evidence) ~~(evidence)~~ of the SE corner of Section 5, T 18 N, R 3 W Fourth Principal Meridian, and I re-established said corner according to the Wisconsin Statutes as shown and described hereon.

History of corner establishment since Original Government Survey

Harley Sime found an axle at this corner in November of 1965. Larry Feddersen found and used this axle as the corner in a March, 1977 survey.

Description of corner evidence found:

Found and removed the axle and replaced it with a Harrison marker.

Dated this 27th day of August 19 81.

William C. Jung, R.L.S. 1323

County Surveyor's Office

Title

COUNTY SURVEYOR FORM NO. 1

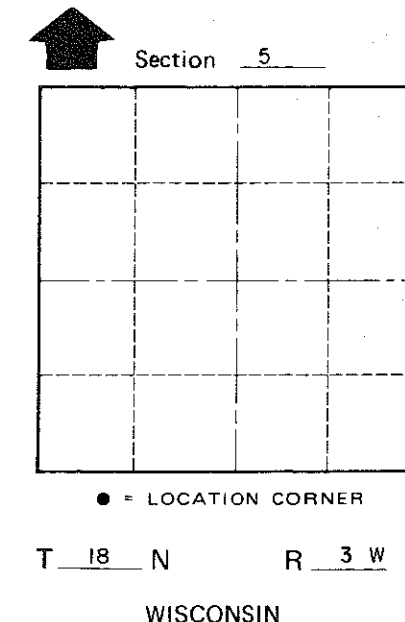
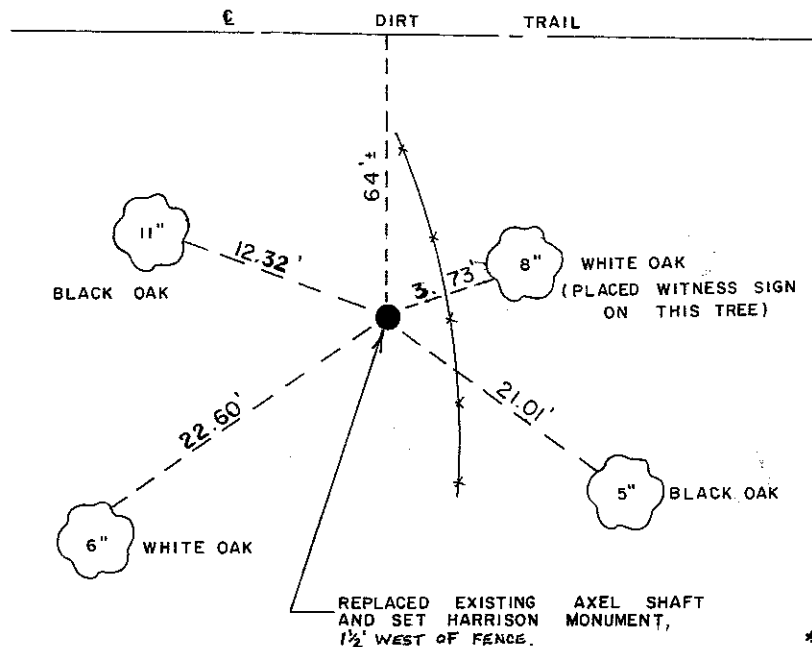
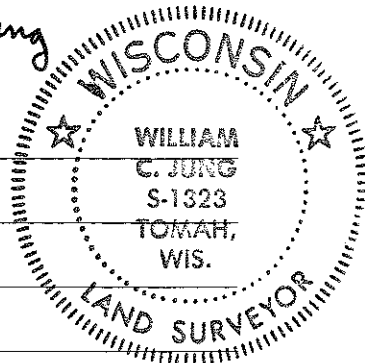
Description of corner and witness monuments, references and accessories used to perpetuate the original or re-established location of this corner:

William C. Jung

Witnesses to corner location:

W. Jung

C. Pietz



Approved: **HARLEY A. SIME**
MONROE CO. SURVEYOR

SURVEY CONTROL ORDER

Horizontal	_____
Vertical	_____

WISCONSIN COORDINATE SYSTEM

Corner	East (X)	North (Y)	Elevation (Z)	Zone
Control Sta. Name				

(Trees double blazed with N&C set in lower blaze)

~~City, Village~~ Town Lafayette
County of Monroe
Wisconsin