

CERTIFICATE

I, Nicholas M. Hillmer, do hereby certify that this document and the data contained herein was prepared by me or under my direct supervision and that I am a duly Licensed Land Surveyor under the laws of the State of Wisconsin.

Dated this 21st day of May, 2013



Nicholas M. Hillmer, P.L.S. 2909
Anderson Engineering of Minnesota, LLC.

CERTIFIED LAND CORNER

History of corner established since Original Government Survey

On June 9th 1981, William Jung set a Harrison monument on line between the Section corners at a distance between them proportionate to the original government notes. Jung also set a 4 inch square treated wood post with sign, up 5 feet +/-, southeast of the corner.

Description of evidence found

On August 10th, 2012, Anderson Engineering of Minnesota located the Harrison monument just below grade and 0.8 feet northwest of a 4 inch square wood post with survey marker sign.

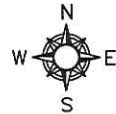
No. 21803042000



Description of corner and witness monuments, references and accessories used to perpetuate the original or re-established location of this corner:

Witnesses to corner location:

Nick Hillmer
Josh Oslund
Dan Greenwald

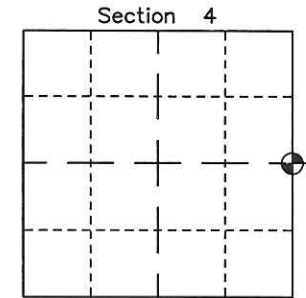
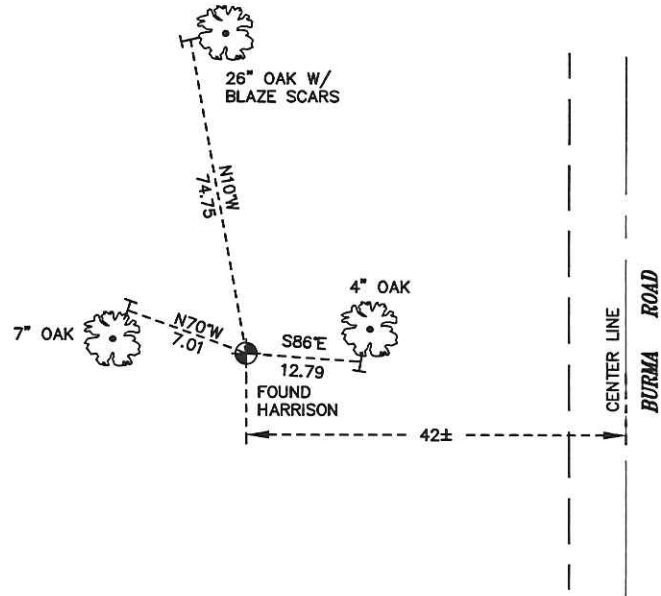


MONROE COUNTY
COORDINATE SYSTEM
NAD 1983 (2007)

HARRISON MONUMENT
Northing (Y) 423946.12
Easting (X) 646964.94

Base Station - 22 182W
Northing (Y) 408053.25
Easting (X) 679287.00

All distances are shown in U.S. Survey Feet.
Ties are to 60D nails set in trees.
Bearings are for tie reference purposes only.
Coordinates were derived from RTK GNSS procedures.



⊕ = LOCATION CORNER
Corner I.D. E 1/4 4
T 18 N R 3 W
Town of La Fayette
Monroe County, WI.

