

**CERTIFICATE**

I, Nicholas M. Hillmer, do hereby certify that this document and the data contained herein was prepared by me or under my direct supervision and that I am a duly Licensed Land Surveyor under the laws of the State of Wisconsin.

Dated this 21st day of May, 2013



Nicholas M. Hillmer, P.L.S. 2909  
Anderson Engineering of Minnesota, LLC.

**CERTIFIED LAND CORNER**

History of corner established since Original Government Survey

McCoy records, dated November 9, 1962 show a high concrete monument at this location.

Description of evidence found

On May 6th, 2013, Anderson Engineering of Minnesota located an axle 0.5 feet below grade in Hableman's cranberry bog. The McCoy monument was replaced with the axle per the lead foreman of Hableman's cranberry bog whom explained that the old Fort McCoy concrete monument was an obstruction to operations thus replaced with the axle. The axle was accepted as the best available evidence.

No. 21803250000



Description of corner and witness monuments, references and accessories used to perpetuate the original or re-established location of this corner:

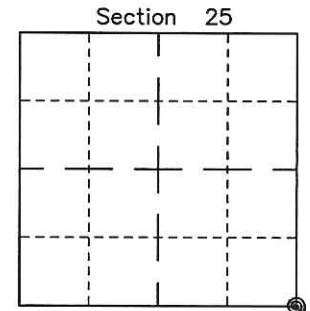
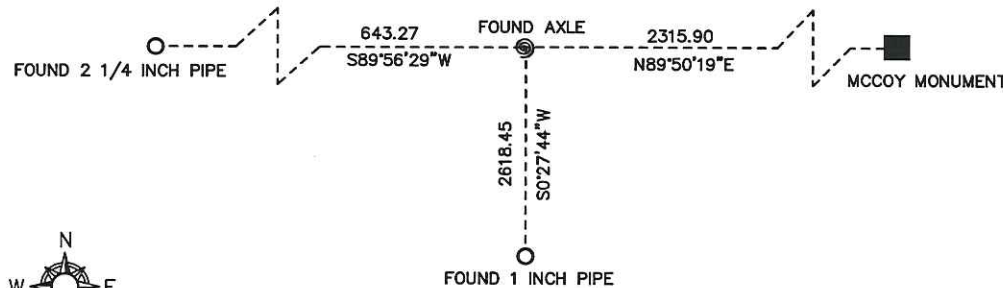
Witnesses to corner location:

Nick Hillmer  
Josh Oslund  
Dan Greenwald

MONROE COUNTY  
COORDINATE SYSTEM  
NAD 1983 (2007)

AXLE  
Northing (Y) 400032.45  
Easting (X) 663232.66

Base Station - 22 182W  
Northing (Y) 408053.25  
Easting (X) 679287.00



⊙ = LOCATION CORNER  
Corner I.D. SE 25  
T 18 N R 3 W  
Town of La Fayette  
Monroe County, WI.

All distances are shown in U.S. Survey Feet.  
Bearings are for tie reference purposes only.  
Coordinates were derived from RTK GNSS procedures.