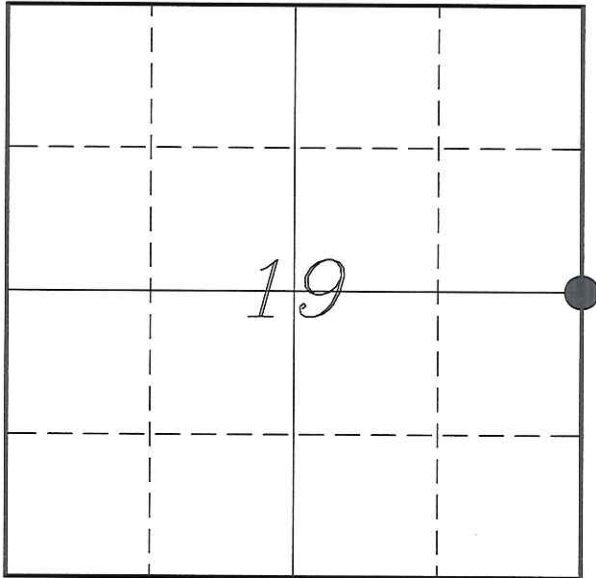


U. S. PUBLIC LAND SURVEY MONUMENT RECORD

SECTION 19, T18N, R3W, TOWN OF LAFAYETTE  
MONROE COUNTY, WISCONSIN



LOCATION OF LANDMARK

MONROE COUNTY COORDINATE SYSTEM	
Northing	408169.787
Easting	636670.983
Datum	NAD 1983 (1991)
Elevation	
Datum	
TYPE OF LANDMARK:	
Set Harrison Monument	
BEARINGS ARE REFERENCED TO:	
Monroe County Coordinates	

Witnesses: Laurence E Johns III  
Al Hoff

Date: 12 January 2014

Describe any record evidence, monument evidence, testimonial evidence or any other material evidence you considered and whether the monument was found or restored through acceptance of an obliterated evidence location.

No bearing trees of record were located.

Occupation in this area has not been maintained well. I did find fences or remnants of fences in all four directions. The occupation to the East is very erratic and not much was left of a fence to the South, just a few fence posts. The remnants of the fence to the North was straight and the fence to the West was straight and better maintained.

No actual fence corner was located (possibly due to the location of the trail) but what was left of occupation in all four directions all pointed to a common location.

The distance to the North from this location matched Holden's distance to within a foot. The distance to the South is short by 40' but the steep terrain could account for that.

I accepted the intersection of fences as the best available evidence of the original government corner and placed a Harrison Monument at that location.

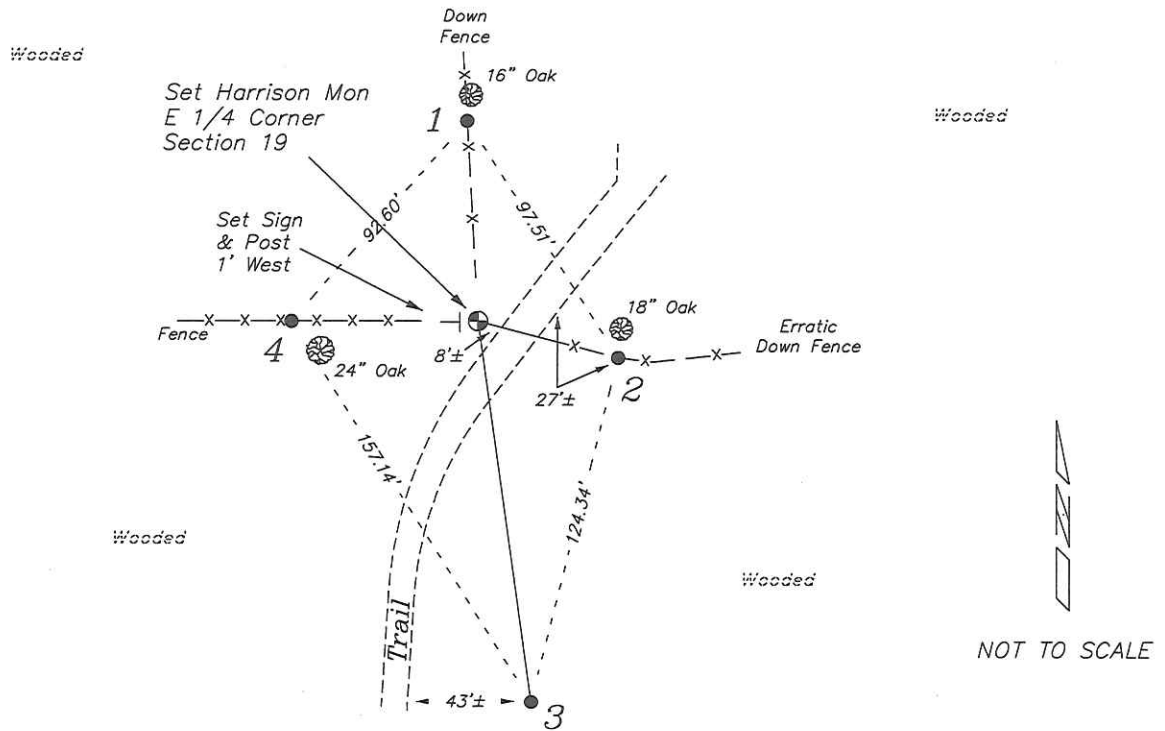
Describe or show any material discrepancy between the location of the restored corner and that of the corner previously restored or re-established.

John Dunn established this corner in November 1845.

Fred Holden was at this corner, in December 1910, during a survey in Section 20. He shows that he re-established this corner at the mid-point.

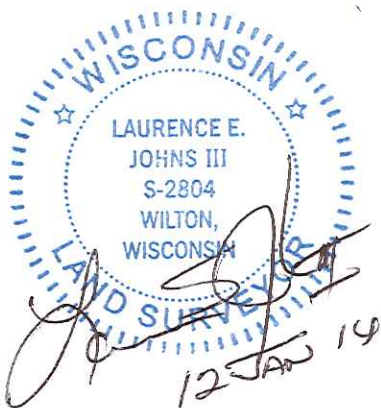
## RECORD OF DURABLE WITNESS MONUMENTS

NO	DESCRIPTION	BEARING	DISTANCE
1	Set 3/4" x 18" Iron Rod 2' South of a 16" Oak	N 03°07'29" W	69.62'
2	Set 3/4" x 18" Iron Rod 4' South of a 18" Oak	S 75°29'16" E	50.37'
3	Set 3/4" x 18" Iron Rod Next to Old Fence Post	S 07°55'27" E	134.52'
4	Set 3/4" x 18" Iron Rod In Fence - 4' NW of a 24" Oak	S 89°56'14" W	64.88'



## PLAN VIEW DRAWING OF REFERENCE TIES

Map Showing Distance And Direction To Other Public Land Survey  
Corners Used For Re-Establishing The Corner



I, Laurence E Johns III RLS 2804, Registered Land Surveyor, hereby certify that the corner location shown on this record was determined by me or under my direction and control, and that this U.S. Public Land Survey Monument Record is correct and complete to the best of my knowledge and belief.

Laurence E. Johns III

Laurence E Johns III RLS 2804  
Eagle Ridge Surveying, LLC  
PO Box 213  
Wilton, Wisconsin  
12 January 2014

