

CERTIFICATE

I, Bryan H. Meyer, do hereby certify that on the 27th day of July 19 95 I found ~~evidence~~ (no evidence) of the South 1/4 corner of Section 19, T 18 N, R 3 W Fourth Principal Meridian, and I re-established said corner according to the Wisconsin Statutes as shown and described hereon.

Dated this 2nd day of Aug. 19 95.

Bryan H. Meyer

Deputy County Surveyor
Title

CERTIFIED LAND CORNER

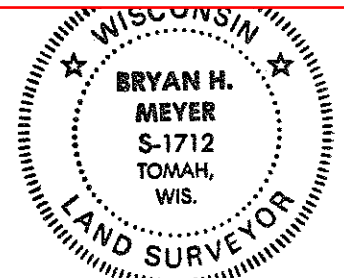
History of corner establishment since Original Government Survey

Fred Holden was here in February of 1903.

Description of corner evidence found:

I set this corner on line and at a proportionate distance between the Southwest and Southeast corners of Section 19.

No. 92
21803190020



Bryan H. Meyer
H. A. Sime and Associates
P. O. Box 705
Tomah, Wisconsin 54660
Phone: (608)-372-5392

COUNTY SURVEYOR FORM NO. 1

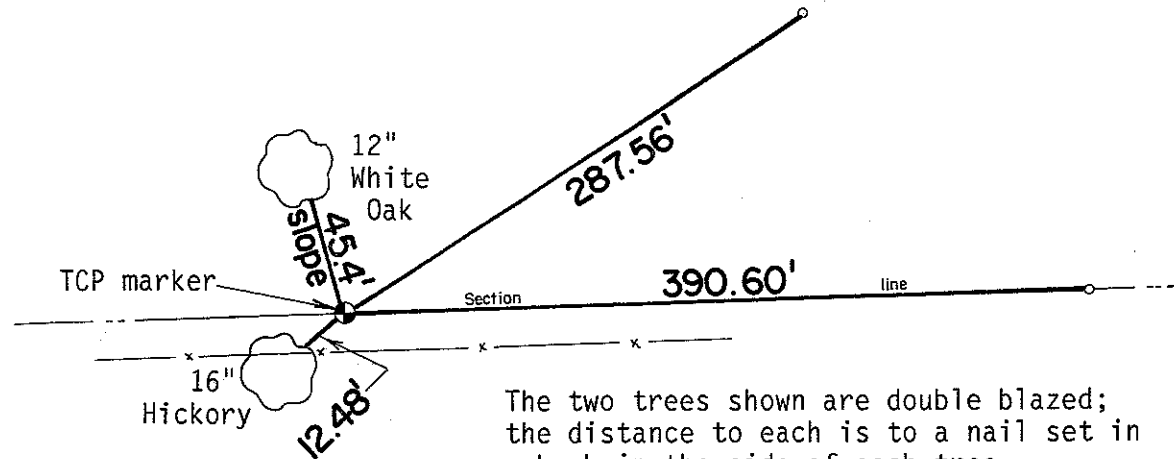
Description of corner and witness monuments, references and accessories used to perpetuate the original or re-established location of this corner:
Crew: Meyer, Haberlin
Date: July 27, 1995 - 2:35 P. M.
Weather: Rain, Lightning, Thunder!
Witnesses to corner location:

Bryan H. Meyer

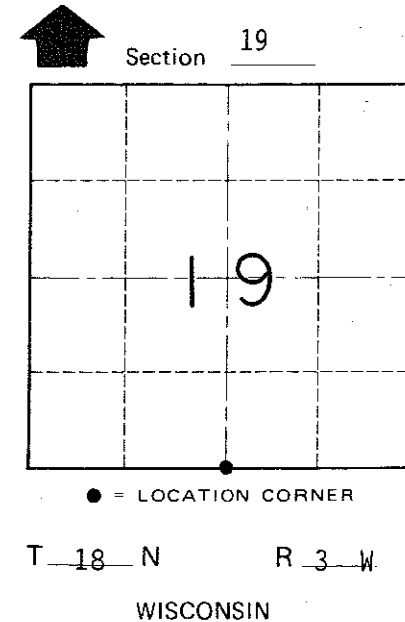
Harold Haberlin

Set True Cast Products (TCP) marker, up 6", 4'± North of occupied line fence. Set sign 4'± South of TCP marker in fence.

o = Set 3/4"x24" round iron bar weighing 1.50 lbs./lin. ft.



The two trees shown are double blazed; the distance to each is to a nail set in a hack in the side of each tree.



SURVEY CONTROL ORDER

Horizontal	_____
Vertical	_____

WISCONSIN COORDINATE SYSTEM

Corner	East (X)	North (Y)	Elevation (Z)	Zone
Control Sta. Name				

~~City, Village or~~ Town of LaFayette
County of Monroe