

I, Lawrence A. Feddersen, do hereby certify that on the 26th. day of September 19 78, I found ~~evidence~~ (no evidence) of the Northwest corner of Section 29, T 18 N, R 3 W, Fourth Principal Meridian, and I re-established said corner according to the Wisconsin Statutes as shown and described hereon.

Dated this 3 day of October 19 78

Lawrence A. Feddersen

REGISTERED LAND SURVEYOR S-1226  
Title



History of original corner establishment:

In May, 1869, O.R. Dahl visited this corner. In December, 1910, Fred Holden visited this corner and found at least one of the original bearing trees. In November, 1957, Henry Lenschow found both stumps of the original witness trees and set an iron pipe at the record distance from the stumps.

Description of corner evidence found: We conducted an extensive search for the iron pipe and about the area of several computed locations for this corner; however, we were unable to locate the pipe. The two stumps had been grubbed out shortly after the pipe had been set, according to Mr. Clay, who had owned the land years ago. The corner was re-established by doubling and extending the line North between the SW and W $\frac{1}{2}$  corners of Section 29. The distance from this location to the N $\frac{1}{4}$  corner of Section 29 corresponds reasonably well with O.R. Dahl's measured distance to the N $\frac{1}{4}$  corner.

Description of corner and witness monuments, references and accessories used to perpetuate the original or re-established location of this corner:

Witnesses to corner location:

Lawrence A. Feddersen

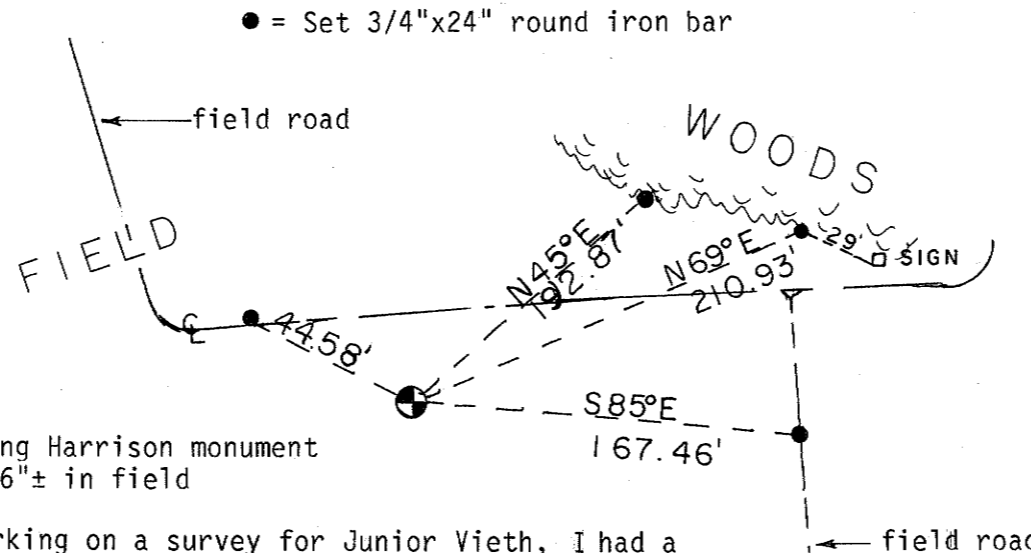
Douglas J. Malliet

Steven R. Towne

Crew: Bryan Meyer

Harold Haberlin

5 June 1995



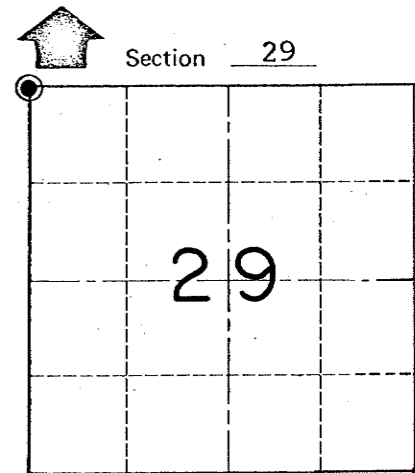
Existing Harrison monument  
Down 16"± in field

UPDATE: While working on a survey for Junior Vieth, I had a very difficult time finding the corner because ties were either gone or too far away. I found the Harrison and established new ties as shown.

*Bryan Meyer*

NOTE: Sketch drawn by Harold Haberlin.

WISCONSIN COORDINATE SYSTEM



● = LOCATION CORNER

T 18 N R 3 W

WISCONSIN

COUNTY SURVEYOR FORM NO. 1

SURVEY CONTROL ORDER

Horizontal	_____
Vertical	_____

Corner	East (X)	North (Y)	Elevation (Z)	Zone
Control Sta. Name				

~~City/Village/Town~~ of LAFAYETTE

County of MONROE