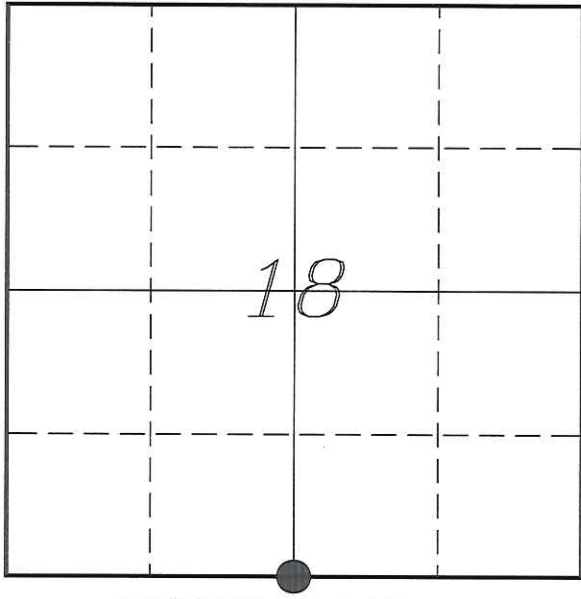


U. S. PUBLIC LAND SURVEY MONUMENT RECORD

SECTION 18, T18N, R3W, TOWN OF LAFAYETTE
MONROE COUNTY, WISCONSIN



LOCATION OF LANDMARK

Witnesses: Laurence E Johns III
Al Hoff

Date: 12 January 2014

MONROE COUNTY COORDINATE SYSTEM	
Northing	410725.794
Easting	633985.434
Datum	NAD 1983 (1991)
Elevation	
Datum	
TYPE OF LANDMARK:	
Set Harrison Monument	
BEARINGS ARE REFERENCED TO:	
Monroe County Coordinates	

Describe any record evidence, monument evidence, testimonial evidence or any other material evidence you considered and whether the monument was found or restored through acceptance of an obliterated evidence location.

No bearing trees of record were located.

I found no occupation, evidence or previous monumentation of this corner.

I re-established this corner by proration between the SW & SE Corners of Section 18 and placed a Harrison Monument at that location.

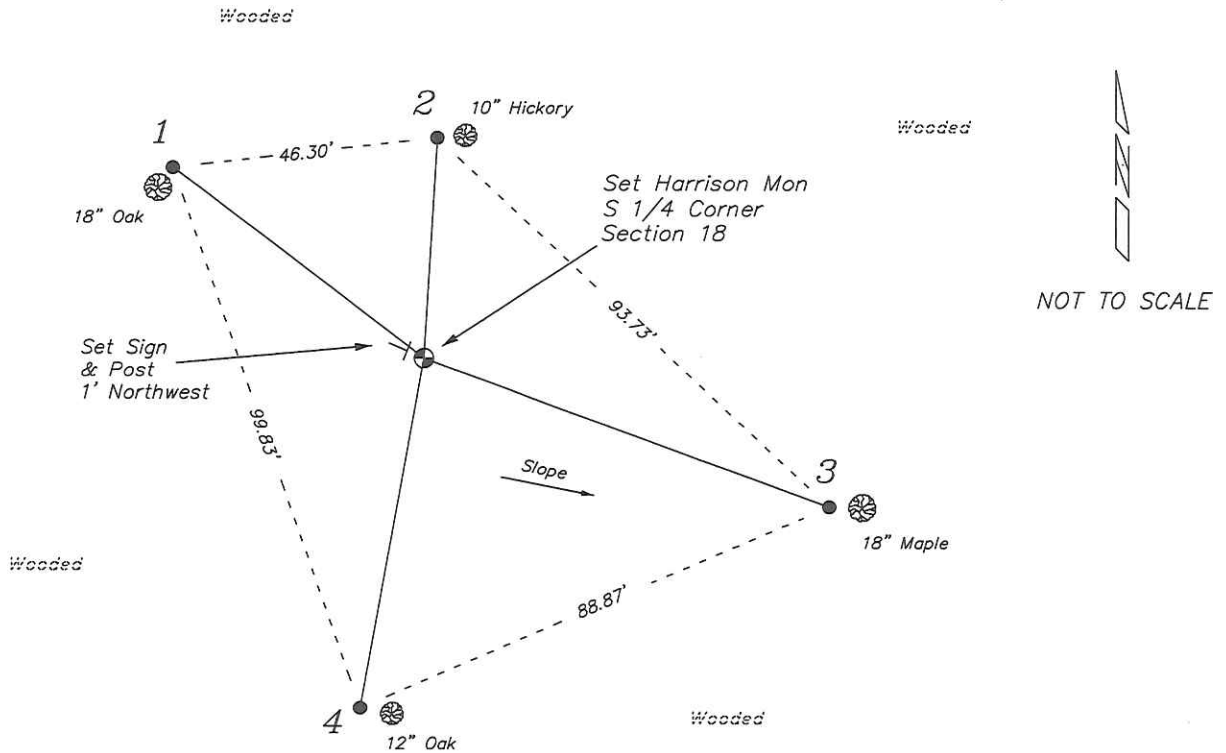
Describe or show any material discrepancy between the location of the restored corner and that of the corner previously restored or re-established.

John Dunn established this corner in November 1845.

I found no record of this corner being visited since the original government survey.

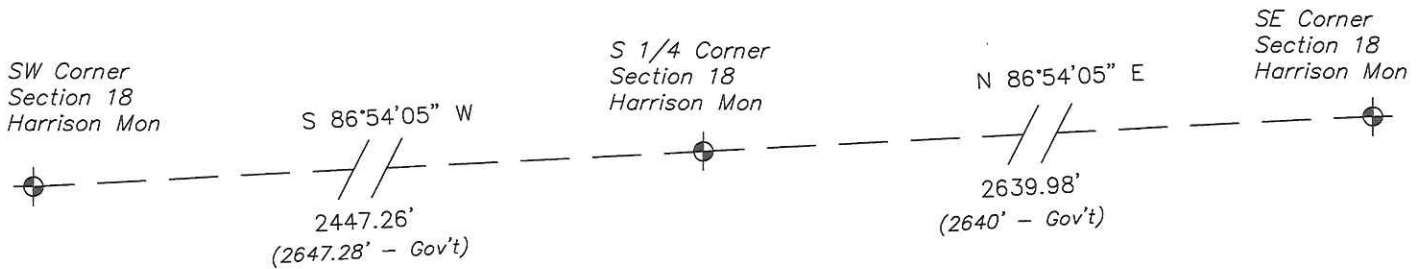
RECORD OF DURABLE WITNESS MONUMENTS

NO	DESCRIPTION	BEARING	DISTANCE
1	Set 3/4" x 18" Iron Rod 2' Northeast of a 18" Oak	N 52°49'28" W	54.86'
2	Set 3/4" x 18" Iron Rod 2' West of a 10" Hickory	N 03°25'02" E	38.42'
3	Set 3/4" x 18" Iron Rod 4' West of a 18" Maple	S 69°48'26" E	75.12'
4	Set 3/4" x 18" Iron Rod 2' West of a 12" Oak	S 10°15'36" W	62.18'



PLAN VIEW DRAWING OF REFERENCE TIES

Map Showing Distance And Direction To Other Public Land Survey Corners Used For Re-Establishing The Corner



I, Laurence E Johns III RLS 2804, Registered Land Surveyor, hereby certify that the corner location shown on this record was determined by me or under my direction and control, and that this U.S. Public Land Survey Monument Record is correct and complete to the best of my knowledge and belief.



[Signature]

Laurence E Johns III, RLS 2804
Eagle Ridge Surveying, LLC
PO Box 213
Wilton, Wisconsin
12 January 2014