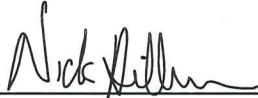


**CERTIFICATE**

I, Nicholas M. Hillmer, do hereby certify that this document and the data contained herein was prepared by me or under my direct supervision and that I am a duly Licensed Land Surveyor under the laws of the State of Wisconsin.

Dated this 21st day of May, 2013



Nicholas M. Hillmer, P.L.S. 2909  
Anderson Engineering of Minnesota, LLC.

**CERTIFIED LAND CORNER**

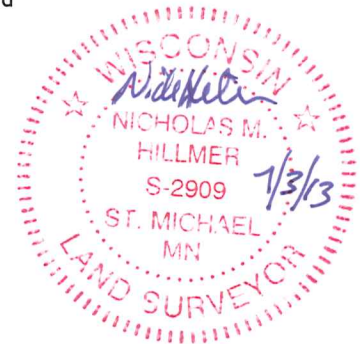
**History of corner established since Original Government Survey**

In September of 1978 Lawrence Feddersen re-established this corner with a Harrison monument set midway and online between section corners after finding no known history. Feddersen notes that the fences in the area of this corner are erratic in nature and therefore unreliable.

**Description of evidence found**

On February 27th, 2013, Anderson Engineering of Minnesota located the Harrison monument 0.2 feet above grade. The land in the area slopes westerly.

No. 21803172000



Description of corner and witness monuments, references and accessories used to perpetuate the original or re-established location of this corner:

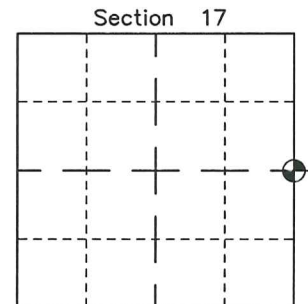
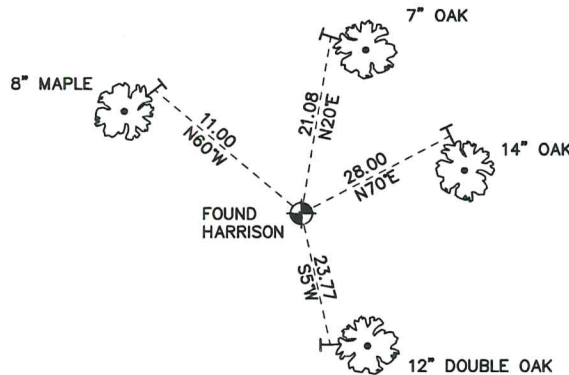
Witnesses to corner location:

Nick Hillmer  
Josh Oslund  
Dan Greenwald

MONROE COUNTY  
COORDINATE SYSTEM  
NAD 1983 (2007)

HARRISON MONUMENT  
Northing (Y) 413482.56  
Easting (X) 641804.00

Base Station - 22 182W  
Northing (Y) 408053.25  
Easting (X) 679287.00



⊕ = LOCATION CORNER  
Corner I.D. E 1/4 17  
T 18 N R 3 W  
Town of La Fayette  
Monroe County, WI.

All distances are shown in U.S. Survey Feet.  
Ties are to 60D nails set in trees.  
Bearings are for tie reference purposes only.  
Coordinates were derived from RTK GNSS procedures.

CERTIFICATE

CERTIFIED LAND CORNER

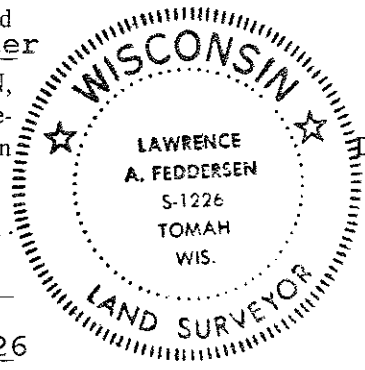
No. 56

**21803172000**

I, Lawrence A. Feddersen, do hereby certify that on the 15 th. day of September 1978. I found ~~(evidence)~~ (no evidence) of the East Quarter corner of Section 17, T 18 N, R 3 W, Fourth Principal Meridian, and I re-established said corner according to the Wisconsin Statutes as shown and described hereon.

Dated this 3 day of October 1978.  
Lawrence A. Feddersen

REGISTERED LAND SURVEYOR S-1226  
Title



History of original corner establishment:

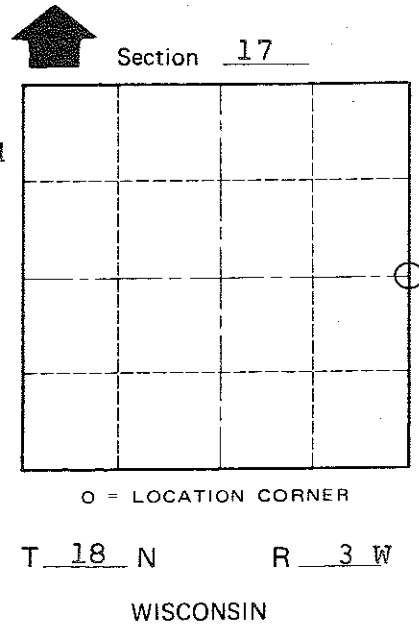
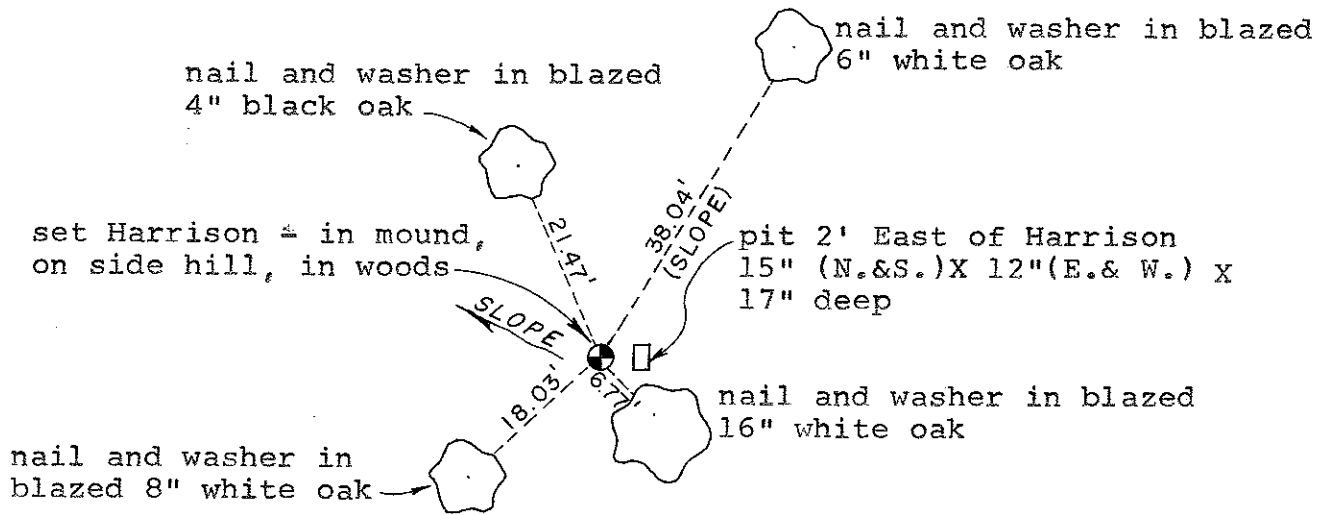
No subsequent history of corner perpetuation since the original U.S. Government Survey.

Description of corner evidence found:

This corner was re-established on line and midway between the SE and NE corners of Section 17. The fences in the area of this corner are erratic in nature and therefore unreliable insofar as producing any conclusive evidence as to the original location of this corner. Mr. James Vieth stated the fences were just placed for convenience of setting the posts.

Description of corner and witness monuments, references and accessories used to perpetuate the original or re-established location of this corner:

Witnesses to corner location:  
Lawrence A. Feddersen  
Douglas J. Malliet  
Steven R. Towne



O = LOCATION CORNER

T 18 N R 3 W  
WISCONSIN

COUNTY SURVEYOR FORM NO. 1

SURVEY CONTROL ORDER

Horizontal	_____
Vertical	_____

WISCONSIN COORDINATE SYSTEM

Corner	East (X)	North (Y)	Elevation (Z)	Zone
Control Sta. Name				

City, Village or Town of LAFAYETTE

County of MONROE