

CERTIFICATE

I, Nicholas M. Hillmer, do hereby certify that this document and the data contained herein was prepared by me or under my direct supervision and that I am a duly Licensed Land Surveyor under the laws of the State of Wisconsin.

Dated this 30th day of May, 2013



Nicholas M. Hillmer, P.L.S. 2909
Anderson Engineering of Minnesota, LLC.

CERTIFIED LAND CORNER

History of corner established since Original Government Survey

In August of 1978 Lawrence Feddersen computed a bearing between the northwest corner of Section 20 and the intersection point of the centerline of the town road and the easterly extension of a fence to the West, all were in the proximity of the northeast corner of Section 20. Feddersen decided to set the Harrison monument at the record bearing and the record Government distance from the northwest corner of Section 20.

Description of evidence found

On February 27th, 2013 Anderson Engineering of Minnesota recovered the Harrison monument with the top broke off 1.0 foot below the ground surface. The monument is 1.7 feet north of a survey marker sign in a fence line.

No. 21803170000



Description of corner and witness monuments, references and accessories used to perpetuate the original or re-established location of this corner:

Witnesses to corner location:

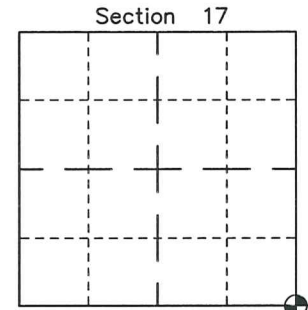
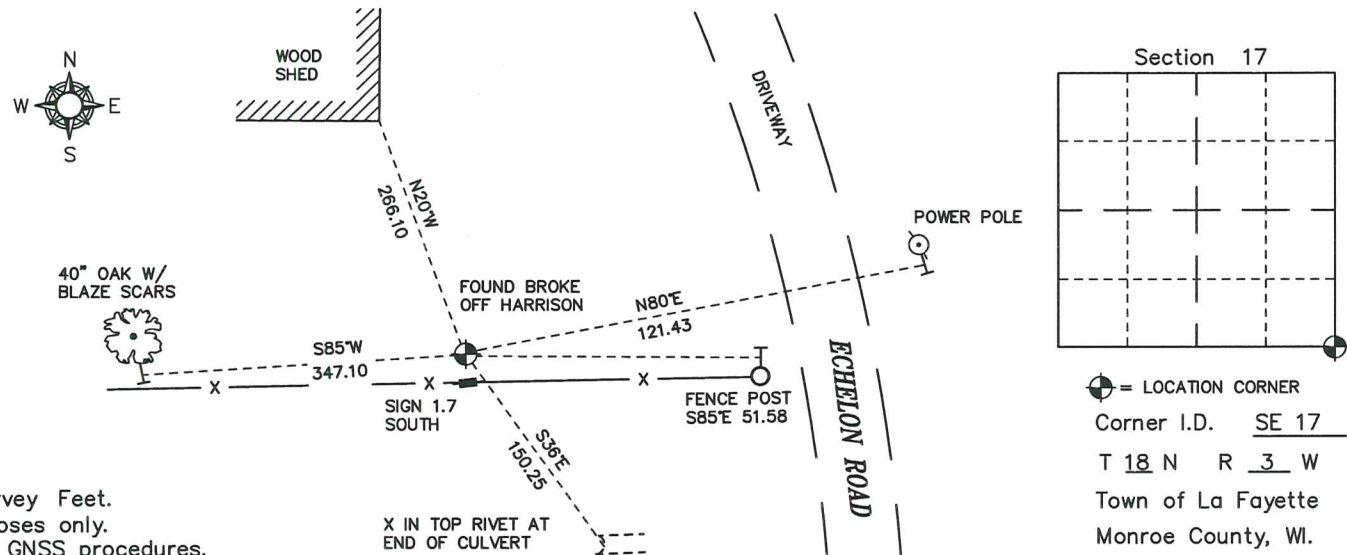
Nick Hillmer
Josh Oslund
Dan Greenwald

MONROE COUNTY
COORDINATE SYSTEM
NAD 1983 (2007)

HARRISON MONUMENT
Northing (Y) 410825.04
Easting (X) 641926.17

Base Station - 22 182W
Northing (Y) 408053.25
Easting (X) 679287.00

All distances are shown in U.S. Survey Feet.
Bearings are for tie reference purposes only.
Coordinates were derived from RTK GNSS procedures.



⊕ = LOCATION CORNER
Corner I.D. SE 17
T 18 N R 3 W
Town of La Fayette
Monroe County, WI.

CERTIFICATE

CERTIFIED LAND CORNER

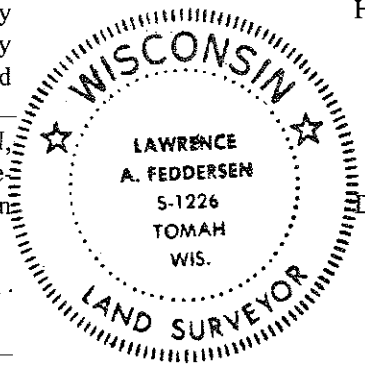
No. # 69

21803170000

I, Lawrence A. Feddersen do hereby certify that on the 24th day of August 19 78, I found ~~(evidence)~~ (no evidence) of the Northeast corner of Section 20, T 18 N, R 3 W, Fourth Principal Meridian, and I re-established said corner according to the Wisconsin Statutes as shown and described hereon.

Dated this 3 day of October 1978.

Lawrence A. Feddersen



History of original corner establishment:

No subsequent history of corner perpetuation since the original U.S. Government Survey. However, we searched for any evidence of an unrecorded monument, but found none.

Description of corner evidence found:

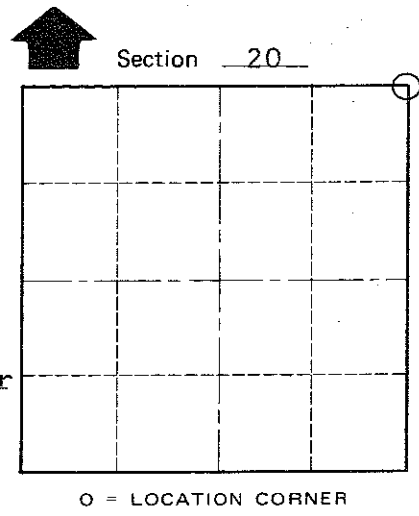
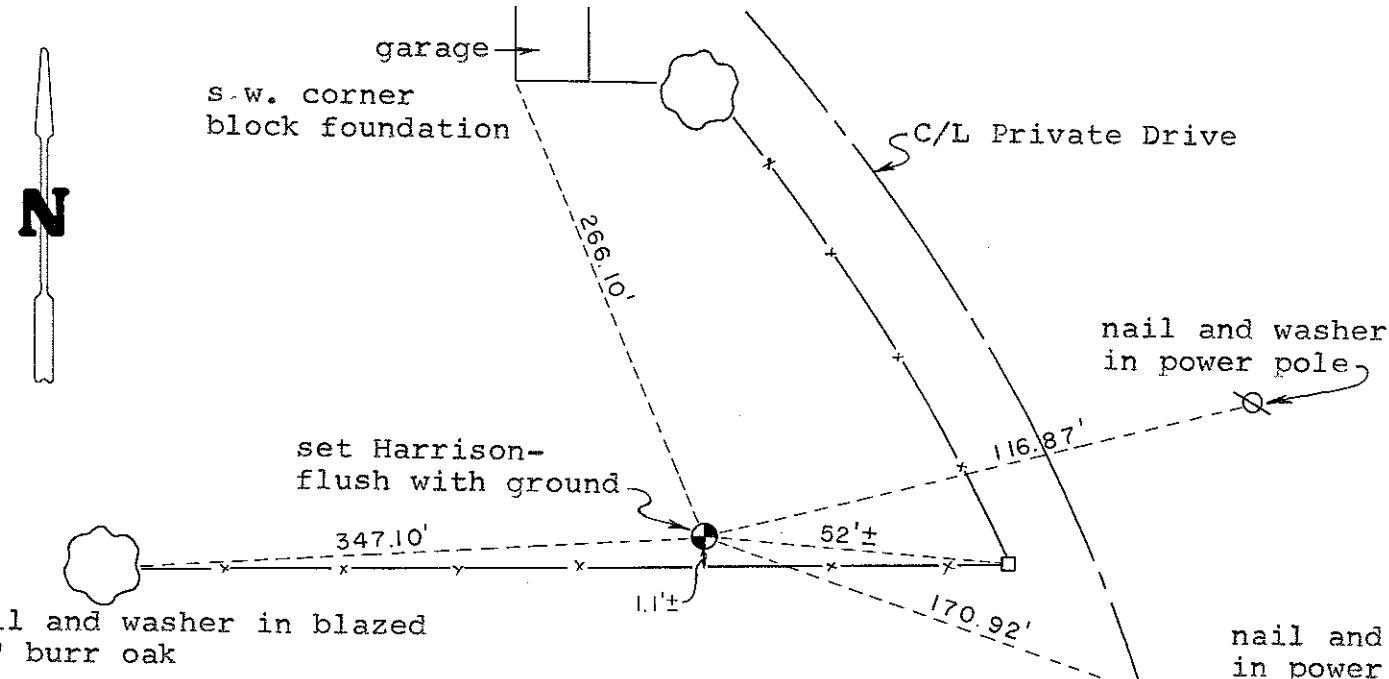
A bearing was computed between the NW corner of Section 20 and the intersection point of the centerline of the town road and the easterly extension of a fence to the West, all in the proximity of the NE corner of Section 20. The permanent corner was then located on that bearing and at the record Government distance from the NW corner of Section 20.

REGISTERED LAND SURVEYOR S-1226
Title

COUNTY SURVEYOR FORM NO. 1

Description of corner and witness monuments, references and accessories used to perpetuate the original or re-established location of this corner:

Witnesses to corner location:
Lawrence A. Feddersen
Douglas J. Malliet
Steven R. Towne



SURVEY CONTROL ORDER

Horizontal	_____
Vertical	_____

WISCONSIN COORDINATE SYSTEM

Corner	East (X)	North (Y)	Elevation (Z)	Zone
Control Sta. Name				

City, Village or Town of LAFAYETTE
County of MONROE