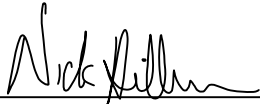


CERTIFICATE

I, Nicholas M. Hillmer, do hereby certify that this document and the data contained herein was prepared by me or under my direct supervision and that I am a duly Licensed Land Surveyor under the laws of the State of Wisconsin.

Dated this 21st day of May, 2013



Nicholas M. Hillmer, P.L.S. 2909
Anderson Engineering of Minnesota, LLC.

CERTIFIED LAND CORNER

History of corner established since Original Government Survey

The 1940's McCoy boundary notes show a corner at this location.

Description of evidence found

On August 29th, 2012 Anderson Engineering of Minnesota located the 4 inch U.S. Army Corps of Engineers survey control mark disk set in concrete 1.3 feet above grade. Concrete is stamped US on west side. The monument was not accepted as the corner. On April 19th, 2013 Anderson Engineering of Minnesota set a 30 inch Berntsen aluminum dig monument with a 3 1/4 inch aluminum cap, stamped "FORT MCCOY BOUNDARY" "2013" ANDERSON ENG. OF MN." The monument was set midway online between the east quarter corner and the center of Section 16.

No. _____
21803162010

Description of corner and witness monuments, references and accessories used to perpetuate the original or re-established location of this corner:

Witnesses to corner location:

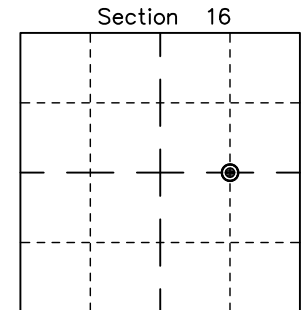
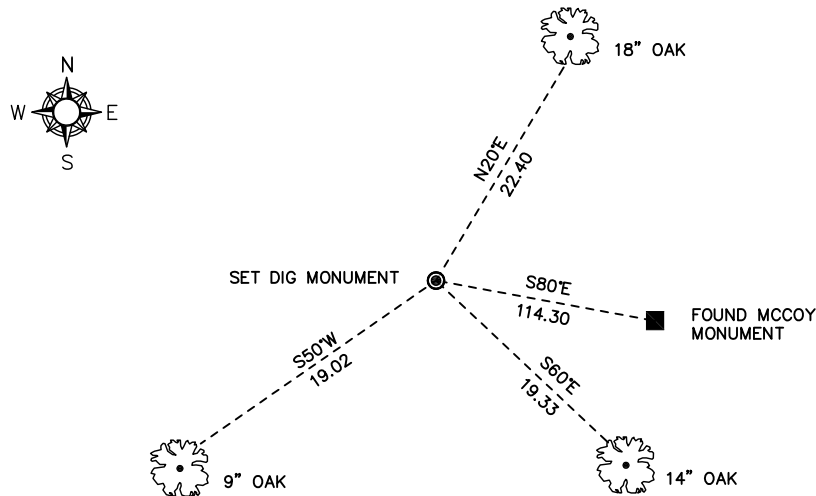
Nick Hillmer
Josh Oslund
Dan Greenwald

MONROE COUNTY
COORDINATE SYSTEM
NAD 1983 (2007)

MCCOY DIG MONUMENT
Northing (Y) 413379.41
Easting (X) 645868.83

Base Station - 22 182W
Northing (Y) 408053.25
Easting (X) 679287.00

All distances are shown in U.S. Survey Feet.
Ties are to 60D nails set in trees.
Bearings are for tie reference purposes only.
Coordinates were derived from RTK GNSS procedures.



● = LOCATION CORNER
Corner I.D. CE 1/16 16
T 18 N R 3 W
Town of La Fayette
Monroe County, WI.