

CERTIFICATE

I, Nicholas M. Hillmer, do hereby certify that this document and the data contained herein was prepared by me or under my direct supervision and that I am a duly Licensed Land Surveyor under the laws of the State of Wisconsin.

Dated this 21st day of May, 2013

Nicholas M. Hillmer, P.L.S. 2909
Anderson Engineering of Minnesota, LLC.

CERTIFIED LAND CORNER

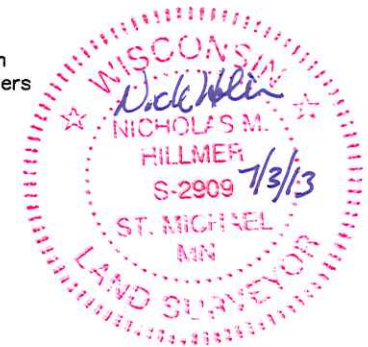
History of corner established since Original Government Survey

The 1940's McCoy boundary notes show a corner at this location. In September of 1978, Lawrence Feddersen found this corner to be obliterated. Feddersen disagreed with the McCoy survey and set a Harrison monument on line and midway between the northeast and southeast corners of Section 16.

Description of evidence found

On August 28, 2012, Anderson Engineering of Minnesota located the Harrison monument flush with the ground and 0.3 feet east of a metal fence post with survey marker sign.

No. 21803162000



Description of corner and witness monuments, references and accessories used to perpetuate the original or re-established location of this corner:

Witnesses to corner location:

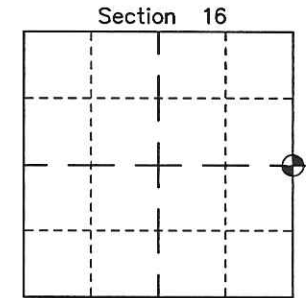
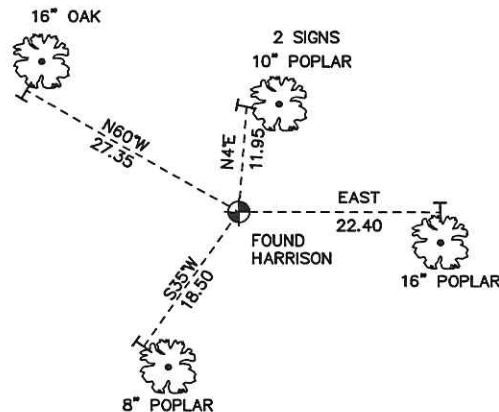
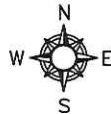
Nick Hillmer
Josh Oslund
Dan Greenwald

MONROE COUNTY
COORDINATE SYSTEM
NAD 1983 (2007)

HARRISON MONUMENT
Northing (Y) 413345.03
Easting (X) 647223.70

Base Station - 22 182W
Northing (Y) 408053.25
Easting (X) 679287.00

All distances are shown in U.S. Survey Feet.
Ties are to 60D nails set in trees.
Bearings are for tie reference purposes only.
Coordinates were derived from RTK GNSS procedures.



☉ = LOCATION CORNER
Corner I.D. E 1/4 16
T 18 N R 3 W
Town of La Fayette
Monroe County, WI.

CERTIFICATE

CERTIFIED LAND CORNER

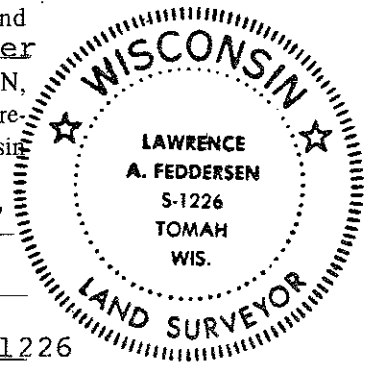
No. 57

21803162000

I, Lawrence A. Feddersen, do hereby certify that on the 11 th. day of September 19 78, I found ~~no evidence~~ (no evidence) of the East Quarter corner of Section 16, T 18 N, R 3 W, Fourth Principal Meridian, and I re-established said corner according to the Wisconsin Statutes as shown and described hereon.

Dated this 3 day of October 1978

REGISTERED LAND SURVEYOR S- 1226
Title



History of original corner establishment:

U.S. Army Corps of Engineers set a boundary marker consisting of a brass cap imbedded in the top of a concrete post at this corner, but has since been bulldozed out.

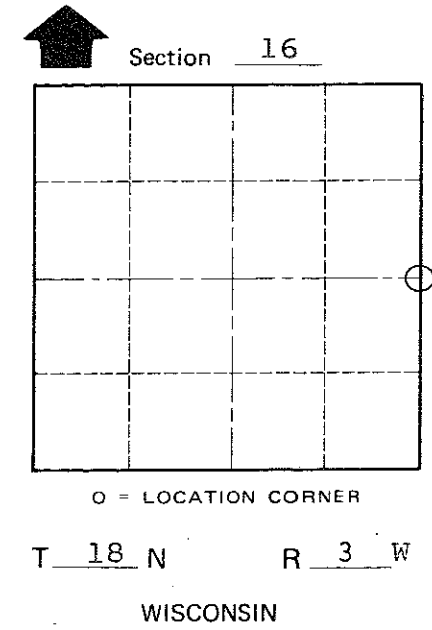
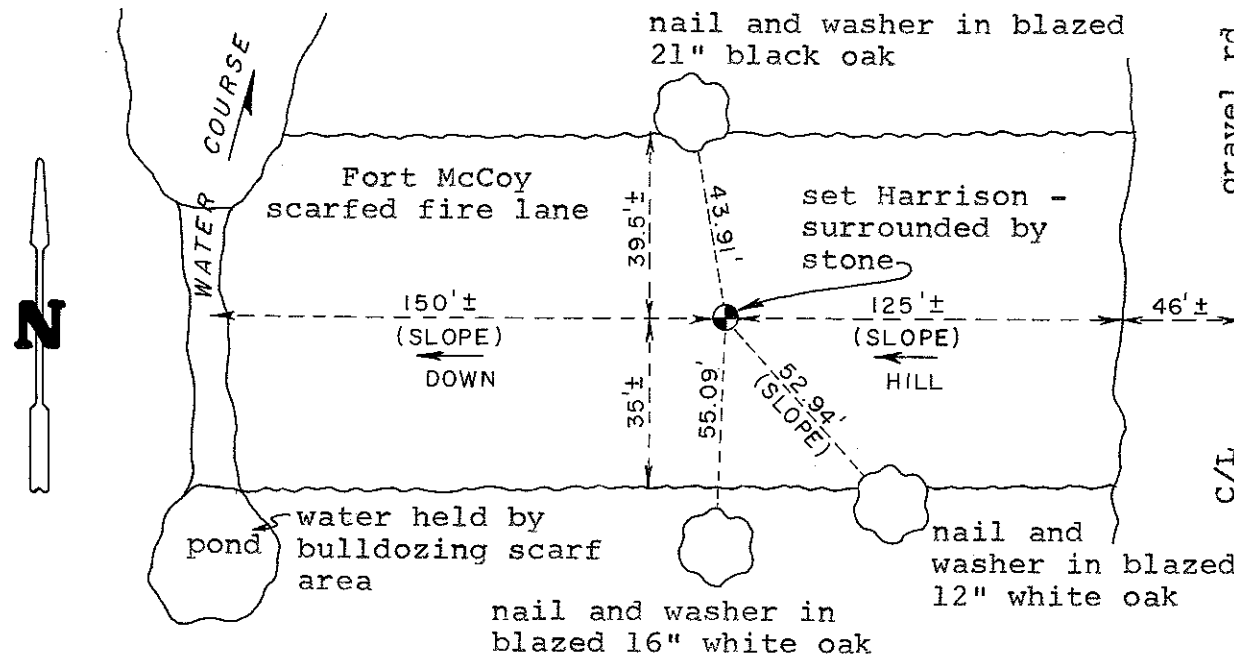
Description of corner evidence found:

This corner was re-established on line and midway between the NE and SE corners. After reviewing the survey methods, notes and information contained on sheet 10 of the Camp McCoy Boundary Survey, it's our opinion that this corner was improperly established in the aforementioned survey, considering there were existing monumented corners 1/2 mile North and South; and also by the fact that the fence as shown in the notes of the aforementioned survey, could be readily challenged as having any significant control over the proper location of the corner.

Description of corner and witness monuments, references and accessories used to perpetuate the original or re-established location of this corner:

Witnesses to corner location:

Lawrence A. Feddersen
Douglas J. Malliet
Steven R. Towne



COUNTY SURVEYOR FORM NO. 1

SURVEY CONTROL ORDER

Horizontal	_____
Vertical	_____

WISCONSIN COORDINATE SYSTEM

Corner	East (X)	North (Y)	Elevation (Z)	Zone
Control Sta. Name				

City, Village or Town of LAFAYETTE

County of MONROE