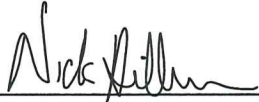


**CERTIFICATE**

I, Nicholas M. Hillmer, do hereby certify that this document and the data contained herein was prepared by me or under my direct supervision and that I am a duly Licensed Land Surveyor under the laws of the State of Wisconsin.

Dated this 21st day of May, 2013



Nicholas M. Hillmer, P.L.S. 2909  
Anderson Engineering of Minnesota, LLC.

**CERTIFIED LAND CORNER**

**History of corner established since Original Government Survey**

Lawrence Feddersen re-established this corner with a Harrison monument set midway and on line in between the southwest corner and the southeast corners of Section 16.

**Description of evidence found**

On February 27th, 2013, Anderson Engineering of Minnesota located the Harrison monument 0.8 feet below grade in a cultivated field.

No. 21803160020



Description of corner and witness monuments, references and accessories used to perpetuate the original or re-established location of this corner:

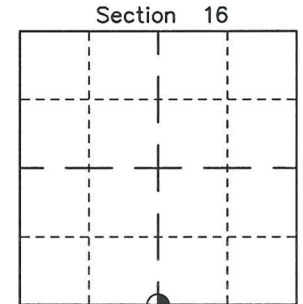
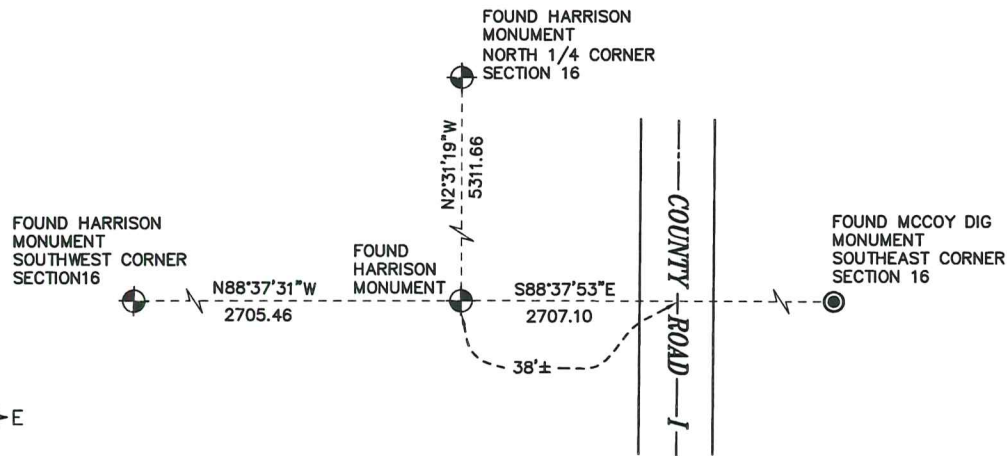
Witnesses to corner location:

Nick Hillmer  
Josh Oslund  
Dan Greenwald

MONROE COUNTY  
COORDINATE SYSTEM  
NAD 1983 (2007)

HARRISON MONUMENT  
Northing (Y) 410760.14  
Easting (X) 644630.85

Base Station - 22 182W  
Northing (Y) 408053.25  
Easting (X) 679287.00



● = LOCATION CORNER  
Corner I.D. S 1/4 16  
T 18 N R 3 W  
Town of La Fayette  
Monroe County, WI.

All distances are shown in U.S. Survey Feet.  
Bearings are for tie reference purposes only.  
Coordinates were derived from RTK GNSS procedures.

CERTIFICATE

CERTIFIED LAND CORNER

No. 68

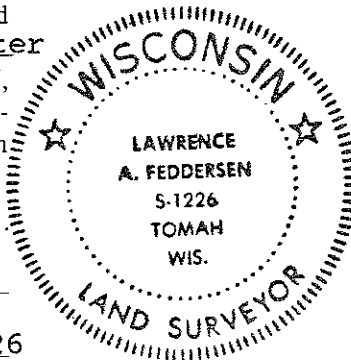
**21803160020**

I, Lawrence A. Feddersen, do hereby certify that on the 24 th. day of August 1978, I found ~~(evidence)~~ (no evidence) of the South Quarter corner of Section 16, T18 N, R 3 W, Fourth Principal Meridian, and I re-established said corner according to the Wisconsin Statutes as shown and described hereon.

Dated this 3 day of Oct. 1978.

Lawrence A. Feddersen

REGISTERED LAND SURVEYOR S-1226  
Title



History of original corner establishment:

No subsequent history of corner perpetuation since the original U.S. Government Survey.

Description of corner evidence found:

This corner was re-established on line and midway between the SW and SE corners of Section 16. This location agrees with the East-West fence, but seems to be approximately 52 feet West of the fence to the South, which is South of the curve in C.T.H. "I". Mr. Dawley, owner of land adjacent to this fence, said the fence wasn't right.

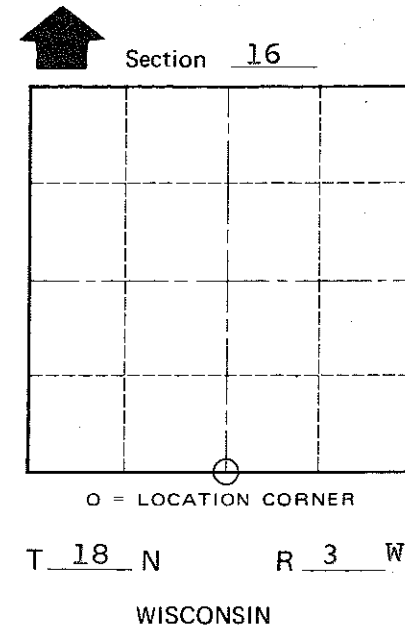
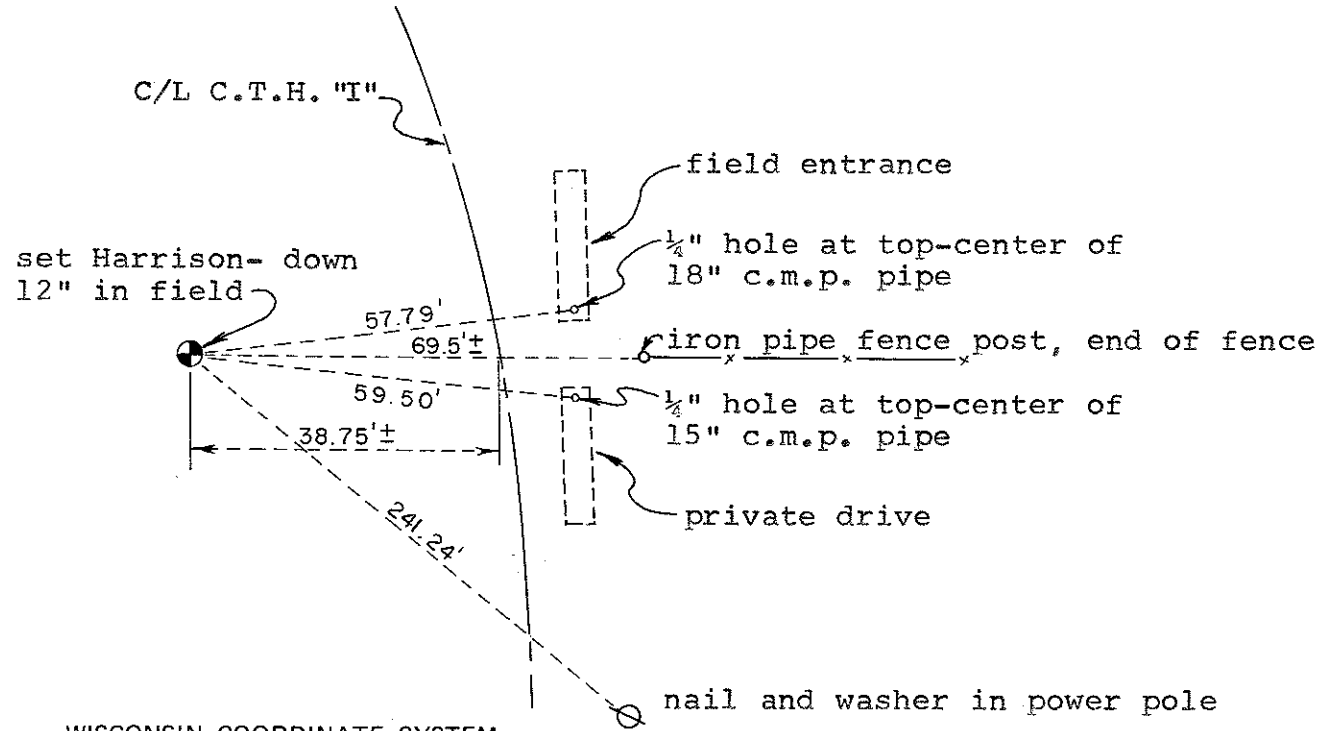
Description of corner and witness monuments, references and accessories used to perpetuate the original or re-established location of this corner:

Witnesses to corner location:

Lawrence A. Feddersen

Douglas J. Malliet

Steven R. Towne



COUNTY SURVEYOR FORM NO. 1

SURVEY CONTROL ORDER

Horizontal	_____
Vertical	_____

WISCONSIN COORDINATE SYSTEM

Corner	East (X)	North (Y)	Elevation (Z)	Zone
Control Sta. Name				

City, Village or Town of LAFAYETTE

County of MONROE