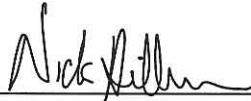


CERTIFICATE

I, Nicholas M. Hillmer, do hereby certify that this document and the data contained herein was prepared by me or under my direct supervision and that I am a duly Licensed Land Surveyor under the laws of the State of Wisconsin.

Dated this 21st day of May, 2013



Nicholas M. Hillmer, P.L.S. 2909
Anderson Engineering of Minnesota, LLC.

CERTIFIED LAND CORNER

History of corner established since Original Government Survey

The 1940's McCoy boundary notes show a corner at this location. Feddersen's notes of March 1977 and December 1982 show an iron pipe at this corner. In November of 1982, William Jung found the pipe and accepted it as the corner.

Description of evidence found

On August 29th, 2012, Anderson Engineering of Minnesota located the 1 1/2 inch open iron pipe sticking up 18 inches above grade. On April 19th, 2013 Anderson Engineering of Minnesota replaced the pipe with a 30 inch Berntsen aluminum dig monument with a 3 1/4 inch aluminum cap, stamped "FORT MCCOY BOUNDARY" "2013" "ANDERSON ENG. OF MN."

Description of corner and witness monuments, references and accessories used to perpetuate the original or re-established location of this corner:

Witnesses to corner location:

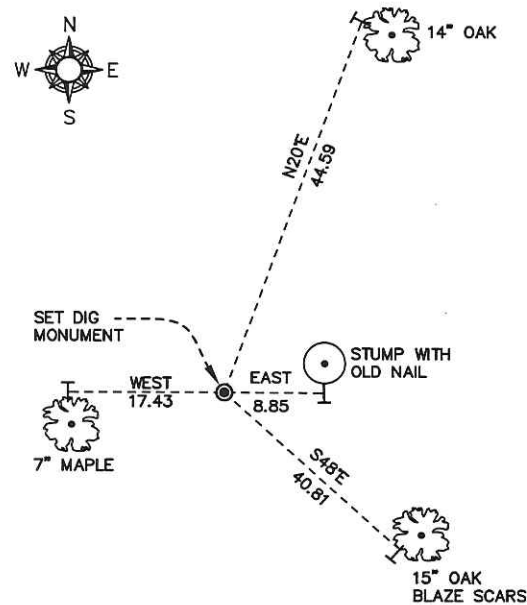
Nick Hillmer
Josh Oslund
Dan Greenwald

MONROE COUNTY
COORDINATE SYSTEM
NAD 1983 (2007)

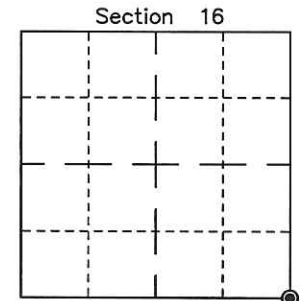
MCCOY DIG MONUMENT
Northing (Y) 410695.48
Easting (X) 647337.18

Base Station - 22 182W
Northing (Y) 408053.25
Easting (X) 679287.00

All distances are shown in U.S. Survey Feet.
Ties are to 60D nails set in trees.
Bearings are for tie reference purposes only.
Coordinates were derived from RTK GNSS procedures.



No. 21803160000



⊙ = LOCATION CORNER
Corner I.D. SE 16
T 18 N R 3 W
Town of La Fayette
Monroe County, WI.

21803160000

I, William C. Jung, do hereby certify that on the 30th day of November 1982, I found (evidence) ~~stone~~ of the Northwest corner of Section 22, T 18 N, R 3 W Fourth Principal Meridian, and I re-established said corner according to the Wisconsin Statutes as shown and described hereon.

History of corner establishment since Original Government Survey

The Camp McCoy boundary notes show a stone at this corner. Feddersen's notes of March, 1977, and December, 1982, show an iron pipe at this corner.

Description of corner evidence found:

I found the pipe and accepted it as the corner. I did not find a stone.

Dated this 17th day of Dec. 1982.

William C. Jung
Deputy County Surveyor

Title

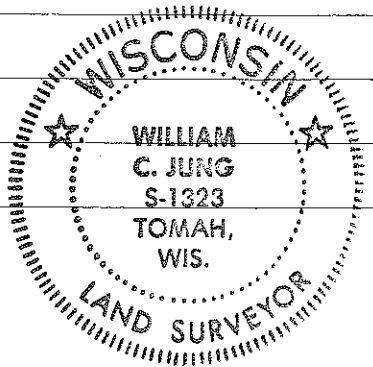
Approved: **HARLEY A. SIME**
MONROE CO. SURVEYOR

COUNTY SURVEYOR FORM NO. 1

Description of corner and witness monuments, references and accessories used to perpetuate the original or re-established location of this corner:

Witnesses to corner location:

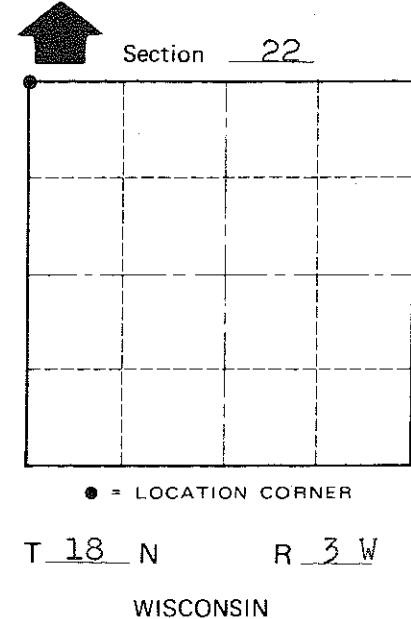
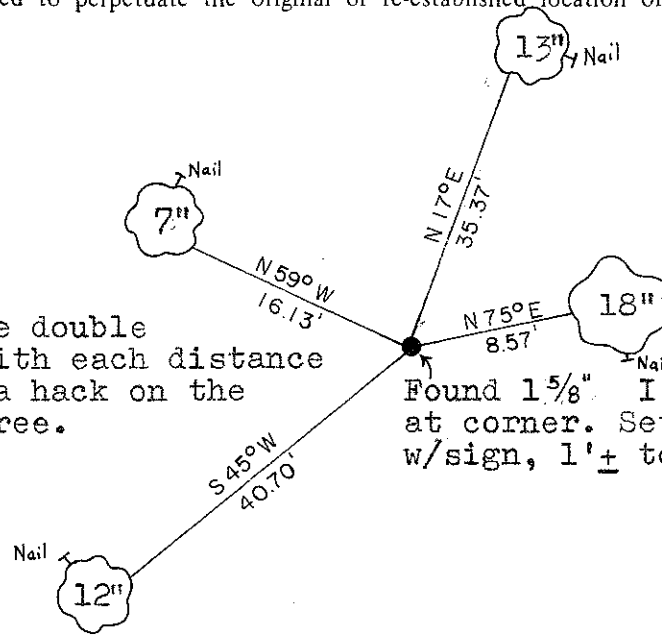
William C. Jung



SURVEY CONTROL ORDER

Horizontal	_____
Vertical	_____

All B.T.'s are double blazed Oaks with each distance to a nail in a hack on the side of the tree.



WISCONSIN COORDINATE SYSTEM

Corner	East (X)	North (Y)	Elevation (Z)	Zone
Control Sta. Name				

~~Village of~~ Town of Lafayette
County of Monroe