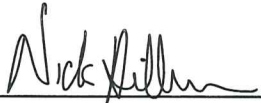


# CERTIFICATE

I, Nicholas M. Hillmer, do hereby certify that this document and the data contained herein was prepared by me or under my direct supervision and that I am a duly Licensed Land Surveyor under the laws of the State of Wisconsin.

Dated this 21st day of May, 2013



Nicholas M. Hillmer, P.L.S. 2909  
Anderson Engineering of Minnesota, LLC.

# CERTIFIED LAND CORNER

## History of corner established since Original Government Survey

William Bulawa found an old fence and earth berm running north and south at the corner location. Bulawa held old fence for east-west and set a Harrison monument at equal distance between the northeast corner and southeast corner of Section 9.

## Description of evidence found

On March 13th, 2013, Anderson Engineering of Minnesota located the Harrison monument 0.85 feet east of a witness post with a survey marker sign. Remains of a north-south fence run over the monument.

No. 21803092000



Description of corner and witness monuments, references and accessories used to perpetuate the original or re-established location of this corner:

Witnesses to corner location:

Nick Hillmer  
Josh Oslund  
Dan Greenwald

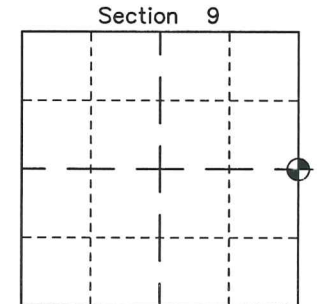
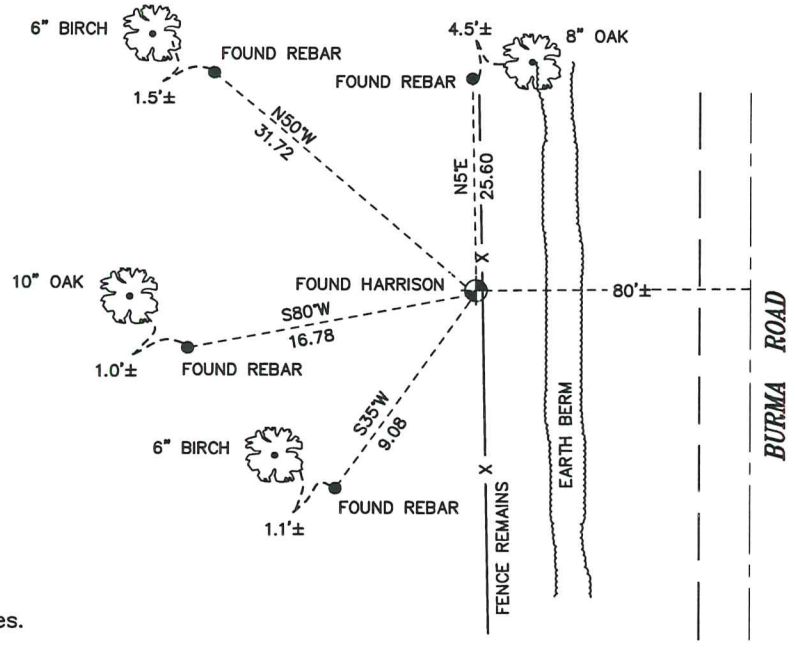
MONROE COUNTY  
COORDINATE SYSTEM  
NAD 1983 (2007)

HARRISON MONUMENT  
Northing (Y) 418649.23  
Easting (X) 647008.75

Base Station - 22 182W  
Northing (Y) 408053.25  
Easting (X) 679287.00



All distances are shown in U.S. Survey Feet.  
Bearings are for tie reference purposes only.  
Coordinates were derived from RTK GNSS procedures.



● = LOCATION CORNER  
Corner I.D. E 1/4 9  
T 18 N R 3 W  
Town of La Fayette  
Monroe County, WI.

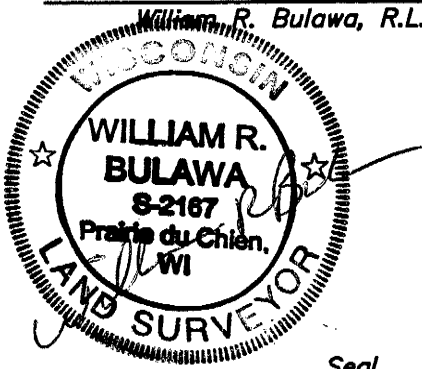
**CERTIFIED LAND CORNER**

STATE OF WISCONSIN) S.S.  
COUNTY OF MONROE)

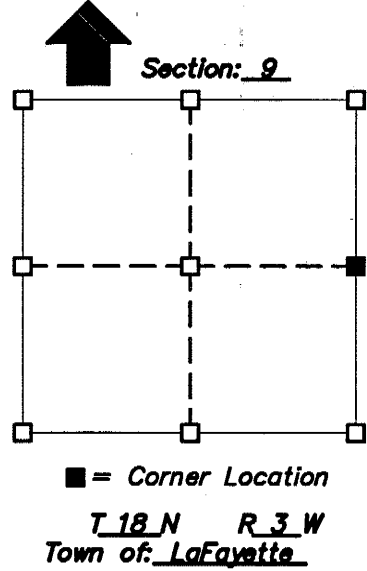
I, WILLIAM R. BULAWA, do hereby certify that on the 9th day of April 2004, I found (~~evidence~~/no evidence) of the E 1/4 corner of Section 9, T 18 N, R 3 W, Fourth Principal Meridian, and I re-established said corner according to the Wisconsin Statutes as shown and described hereon.

Dated this 16th day of April, 2004

William R. Bulawa, R.L.S. No. S-2167



Seal



**History of original corner establishment:**

No subsequent history of corner perpetuation since the original U.S. Government Survey

**Description of corner evidence found:**



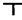
Found a old fence and earth berm running north and south at corners location. Held old fence for the east - west position and set corner at equal distance between the NE and SE corners of Section 9.

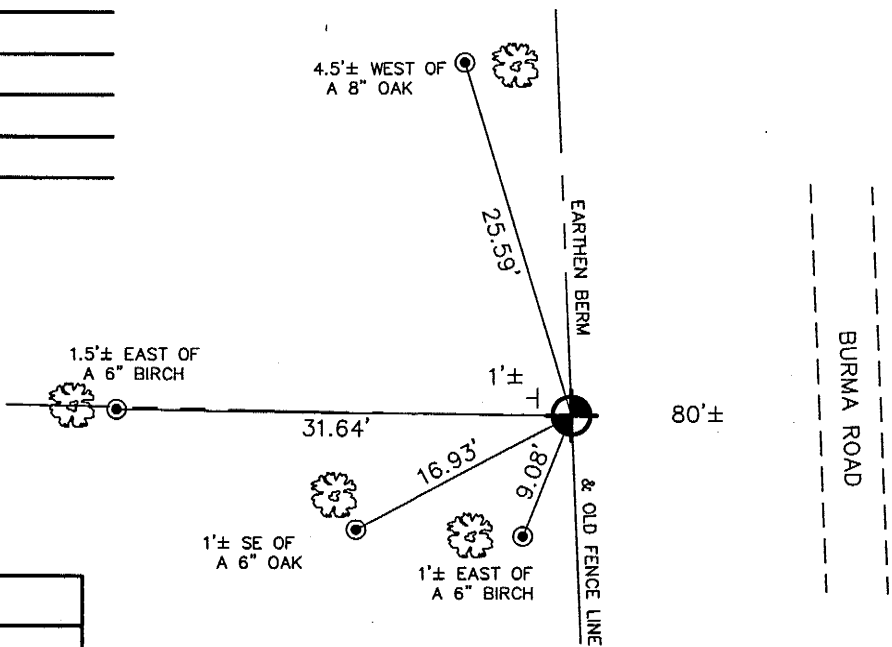
**Description of corner and witness monuments, references and accessories used to perpetrate the original or re-established location of this corner:**

**Witnesses to corner location:**

Scott Dischler  
Eric Brey  
\_\_\_\_\_  
\_\_\_\_\_  
\_\_\_\_\_

Sketch: Not to Scale

-  Set a Monroe County Harrison Monument
-  SET A 3/4" x 24" IRON ROD 1.50 LBS./LIN. FT.
-  Gov't Sign



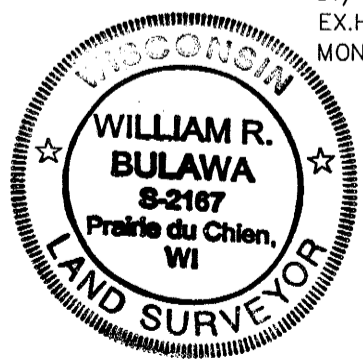
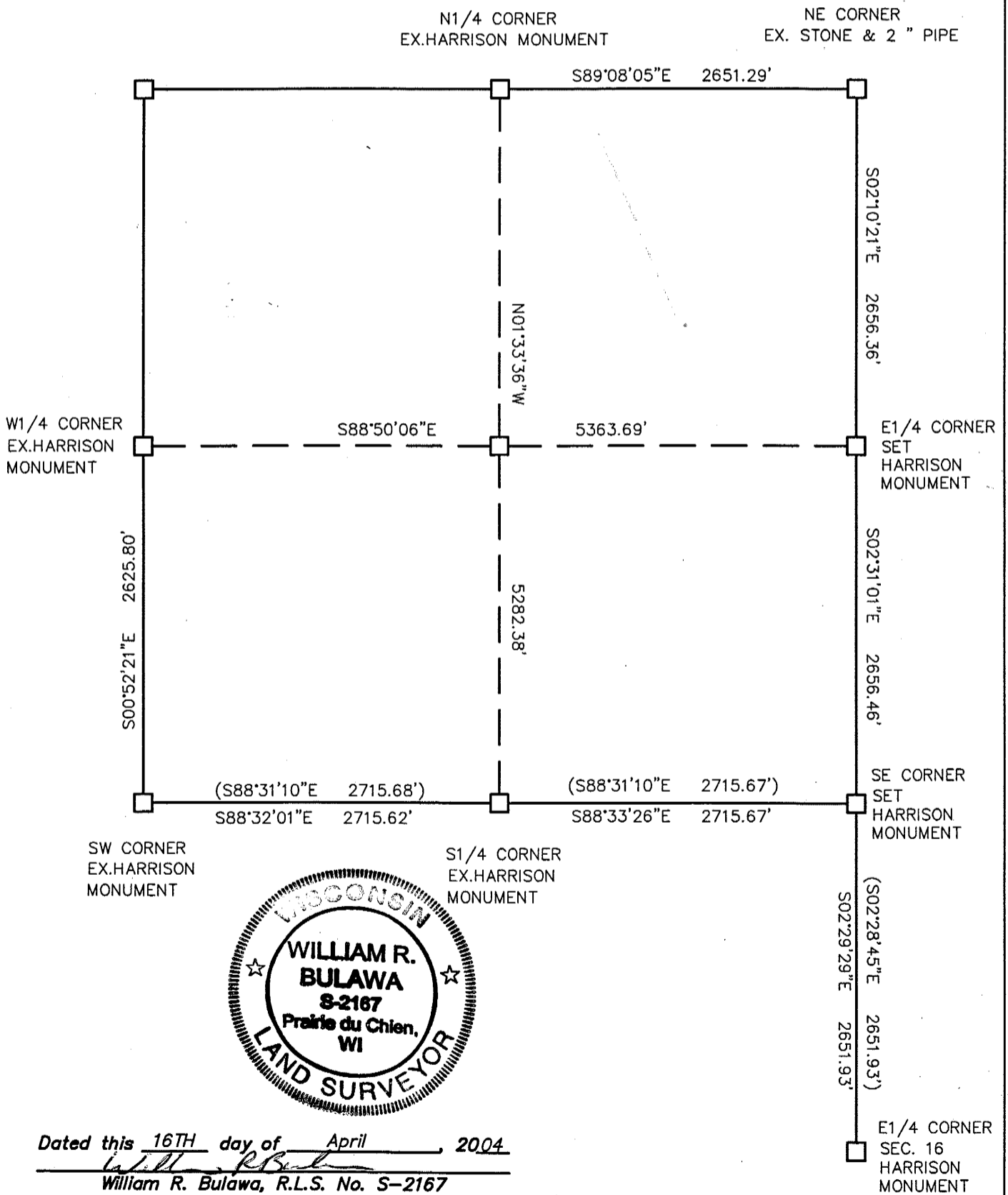
**Horizontal:**  
\_\_\_\_\_  
**Vertical:**  
\_\_\_\_\_

Corner	East (X)	North (Y)	Elevation (Z)	Zone
Control Sta. Name				

Page: \_\_\_\_\_

21803092000

DATA SHEET  
SECTION 9, T18N, R3W  
TOWN OF LAFAYETTE, MONROE COUNTY, WISCONSIN.



Dated this 16TH day of April, 2004  
*William R. Bulawa*  
 William R. Bulawa, R.L.S. No. S-2167

E1/4 CORNER  
SEC. 16  
HARRISON  
MONUMENT