

CERTIFICATE

I, Nicholas M. Hillmer, do hereby certify that this document and the data contained herein was prepared by me or under my direct supervision and that I am a duly Licensed Land Surveyor under the laws of the State of Wisconsin.

Dated this 21st day of May, 2013



Nicholas M. Hillmer, P.L.S. 2909
Anderson Engineering of Minnesota, LLC.

CERTIFIED LAND CORNER

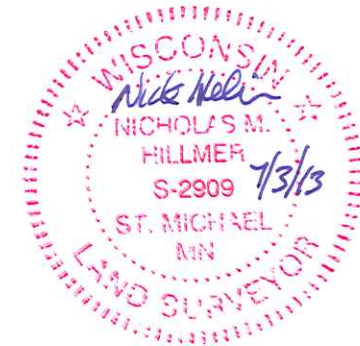
History of corner established since Original Government Survey

In September of 1978 Lawrence Feddersen set a Harrison monument on line and midway between the southeast and southwest corners of Section 9.

Description of evidence found

On August 28th, 2012, Anderson Engineering of Minnesota located the Harrison monument flush with the ground and 0.4 feet south of a metal fence post with survey marker sign.

No. 21803090020



Description of corner and witness monuments, references and accessories used to perpetuate the original or re-established location of this corner:

Witnesses to corner location:

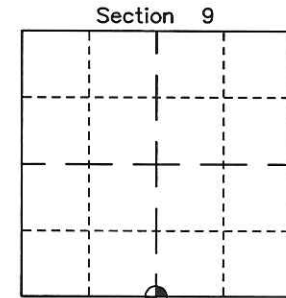
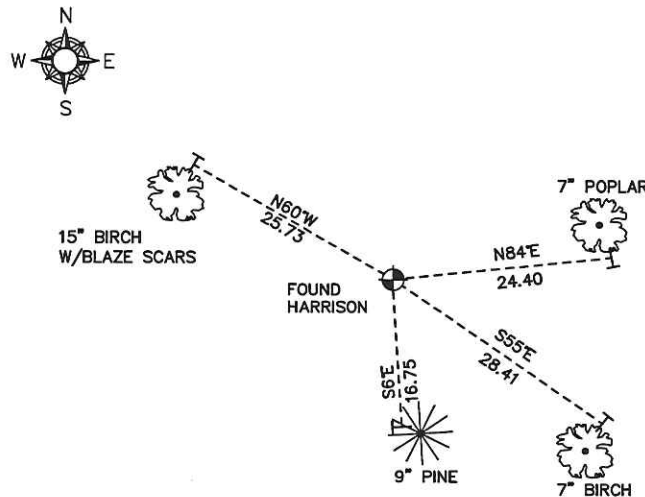
Nick Hillmer
Josh Oslund
Dan Greenwald

MONROE COUNTY
COORDINATE SYSTEM
NAD 1983 (2007)

HARRISON MONUMENT
Northing (Y) 416066.65
Easting (X) 644397.12

Base Station - 22 182W
Northing (Y) 408053.25
Easting (X) 679287.00

All distances are shown in U.S. Survey Feet.
Ties are to 60D nails set in trees.
Bearings are for tie reference purposes only.
Coordinates were derived from RTK GNSS procedures.



⊕ = LOCATION CORNER
Corner I.D. S 1/4 9
T 18 N R 3 W
Town of La Fayette
Monroe County, WI.

CERTIFICATE

CERTIFIED LAND CORNER

No. 48

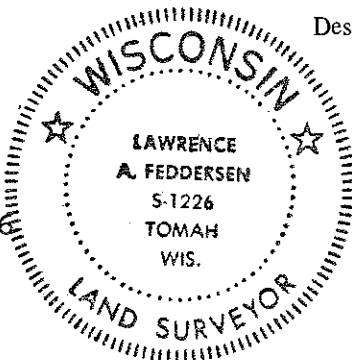
21803090020

I, Lawrence A. Feddersen, do hereby certify that on the 7th day of September 1978, I found (evidence) (no evidence) of the N $\frac{1}{2}$ corner of Section 16, T 18 N, R 3 W, Fourth Principal Meridian, and I re-established said corner according to the Wisconsin Statutes as shown and described hereon.

Dated this 13 day of Sept. 1978.

Lawrence A. Feddersen

REGISTERED LAND SURVEYOR S-1226
Title



History of original corner establishment:

No subsequent history of corner perpetuation since the original U.S. Government Survey.

Description of corner evidence found:

This corner was re-established on line and midway between the NE and NW corners of Section 16. Aerial photos showed substantial shifts in the direction of the occupied fence at this location, which were verified by field measurements. The computed bearing of the fences deviated considerably from an established pattern of bearings in the remainder of Section 16 and also in Sections 8, 17, 20 & 29.

Description of corner and witness monuments, references and accessories used to perpetuate the original or re-established location of this corner:

Witnesses to corner location:

Lawrence A. Feddersen

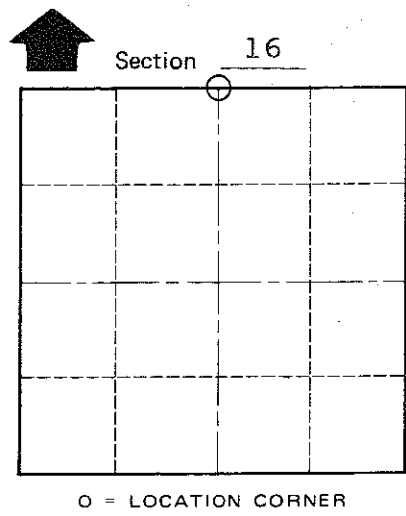
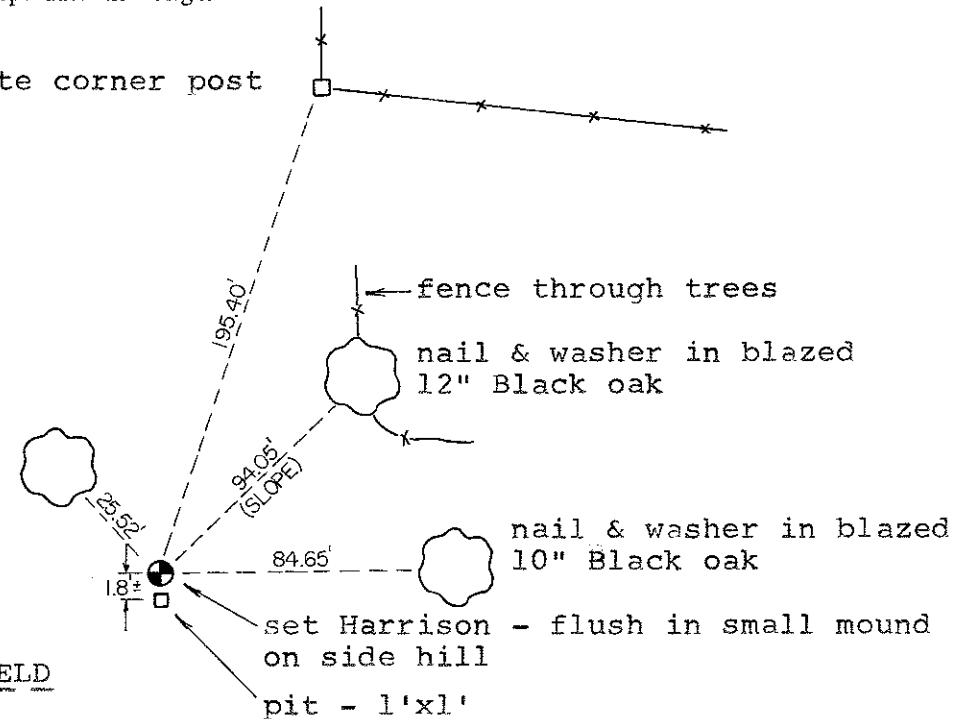
Douglas J. Malliet

Steve Towne



nail & washer in blazed 4" Birch

concrete corner post



T 18 N R 3 W
WISCONSIN

COUNTY SURVEYOR FORM NO. 1

SURVEY CONTROL ORDER

Horizontal	_____
Vertical	_____

WISCONSIN COORDINATE SYSTEM

Corner	East (X)	North (Y)	Elevation (Z)	Zone
Control Sta. Name				

City, Village or Town of LAFAYETTE

County of MONROE