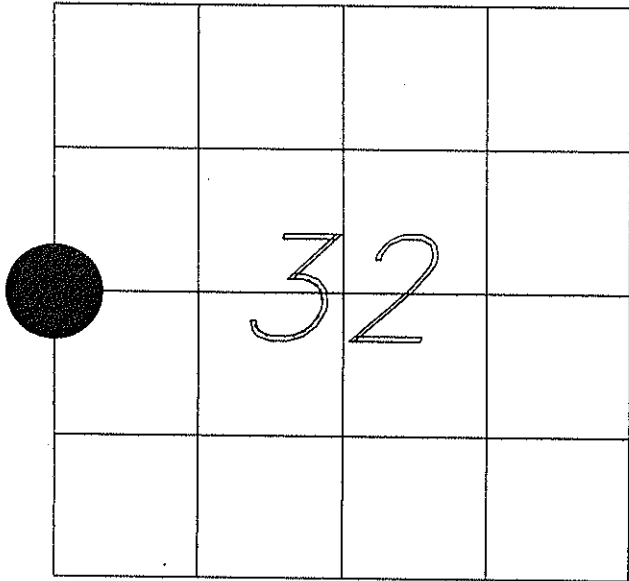


U. S. PUBLIC LAND SURVEY MONUMENT RECORD

SECTION 32 T 18 N, R 3 W, TOWN OF La Fayette  
MONROE COUNTY



LOCATION OF LANDMARK

WISCONSIN COORDINATE SYSTEM
North
East
Theta Angle
Horiz. Order
Vert. Order
TYPE OF LANDMARK
SET HARRISON MON.
BEARINGS ARE REFERENCED TO THE WEST LINE OF THE SW 1/4, SECTION 32, T18N-R3W. ASSUMED TO BEAR S 01°35'08" E

CREW: SD

DATE: 7-11-04

Describe any record evidence, monument evidence, testimonial evidence, or any other material evidence you considered and whether the monument was found or restored through acceptance of an obliterated evidence location.

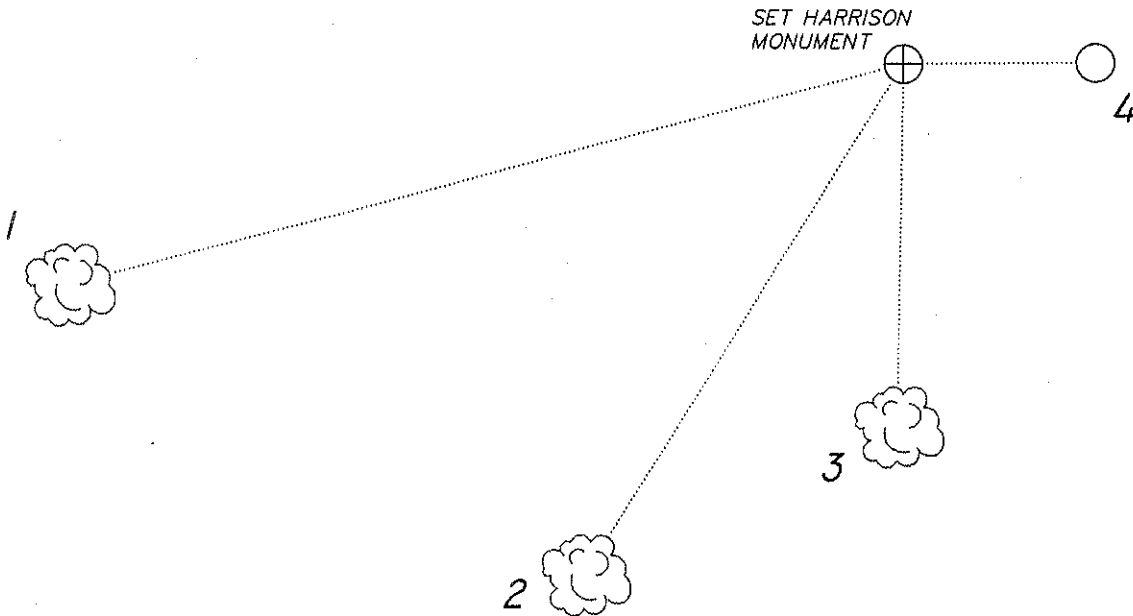
*After an extensive search, I found no evidence of the corner or its witnesses. I did find an old North-South fence and some remnants of a fence coming in from the West which fit my location for the corner. I set the monument equidistant from the northeast and southeast corner in the existing North-South fence line.*

Describe or show any material discrepancy between the location of the restored corner and that of the corner previously restored or reestablished.

*None known.*

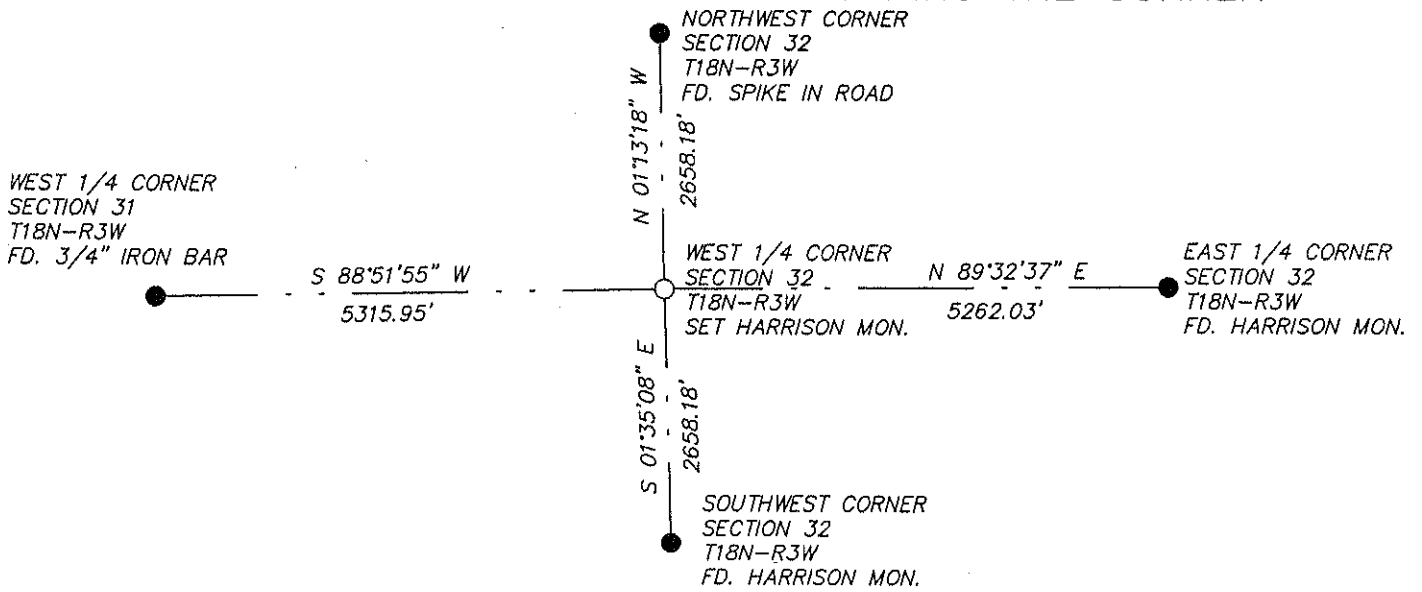
# RECORD OF DURABLE WITNESS MONUMENTS

NO	DESCRIPTION	BEARING	DISTANCE
1	NAIL IN BASE OF 9" OAK (UNBLAZED)	S 75° W	45.1'
2	NAIL IN BASE OF 10" HICKORY (UNBLAZED)	S 32° W	31.5'
3	NAIL IN BASE OF 6" MAPLE (UNBLAZED)	S 01° W	18.9'
4	1" IP SET ON PROPERTY LINE	N 89°32'37" E	10.00'



PLAN VIEW DRAWING OF REFERENCE TIES

## MAP SHOWING DISTANCE AND DIRECTION TO OTHER PUBLIC LAND SURVEY CORNERS USED FOR REESTABLISHING THE CORNER



I, \_\_\_\_\_  
 HEREBY CERTIFY THAT THE CORNER LOCATION SHOWN ON THIS RECORD WAS DETERMINED BY ME OR UNDER MY DIRECTION AND CONTROL AND THAT THIS U. S. PUBLIC LAND SURVEY MONUMENT RECORD IS CORRECT AND COMPLETE TO THE BEST OF MY KNOWLEDGE AND BELIEF.



Signature: Scott M Durbin Date: 7/9/04