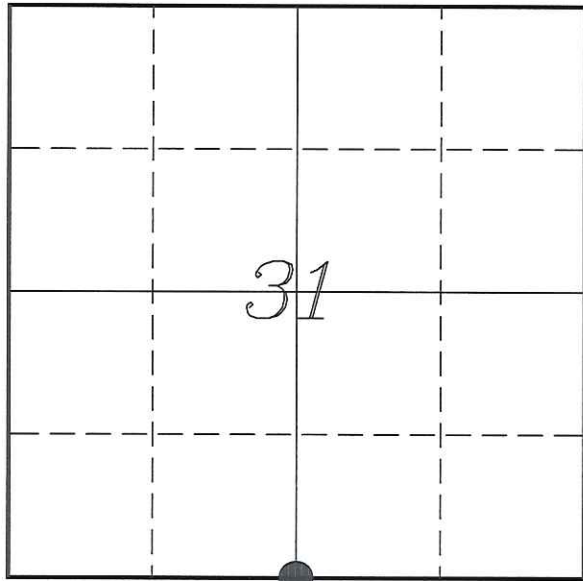


U. S. PUBLIC LAND SURVEY MONUMENT RECORD

**SECTION 31, T18N, R3W, TOWN OF LAFAYETTE
MONROE COUNTY, WISCONSIN**



LOCATION OF LANDMARK

<i>MONROE COUNTY COORDINATE SYSTEM</i>	
<i>Northing</i>	<i>394880.691</i>
<i>Easting</i>	<i>634242.527</i>
<i>Datum</i>	<i>NAD 1983 (1991)</i>
<i>Elevation</i>	
<i>Datum</i>	
<i>TYPE OF LANDMARK:</i>	
<i>Set 1 1/4" X 18" Iron Rod</i>	
<i>BEARINGS ARE REFERENCED TO:</i>	
<i>Monroe County Coordinates</i>	

Witnesses: Laurence E Johns III
Larry Handschy

Date: 9 October 2013

Describe any record evidence, monument evidence, testimonial evidence or any other material evidence you considered and whether the monument was found or restored through acceptance of an obliterated evidence location.

No bearing trees of record were located.

I found the Mag Nail used by Sime, about 3' West of the centerline of Highway Q. Measurements indicate it is in the same location as the Harrison Marker and the earlier 3/4" iron rod.

This location has been used in surveys for 40 years.

I accepted the location of the Mag Nail as the best available evidence of the original government corner and replaced it with a 1 1/4" x 18" iron rod.

Describe or show any material discrepancy between the location of the restored corner and that of the corner previously restored or re-established.

Uriah Biggs established this corner in November 1845.

Fred Holden was at this corner, in May 1910, during a survey in Section 6. He shows that there is a stone in the road at this corner.

Duane Marten was at this corner, in November 1973, during a survey in Section 31. He shows that he set a 3/4" iron rod.

Kim Pritzlaff was at this corner, in July 1975, during a survey in Section 31. He shows that he found the 3/4" iron rod.

William Jung was at this corner, in January 1979. He shows that he replaced the earlier 3/4" iron rod with a Harrison and prepared a tie sheet.

Ronald Parish was at this corner, in October 1979, during a survey in Section 31. He shows an existing Harrison Marker at this corner.

Brian Meyer was at this corner, in May 1987, during a survey in Section 31. He shows an existing Harrison Marker at this corner.

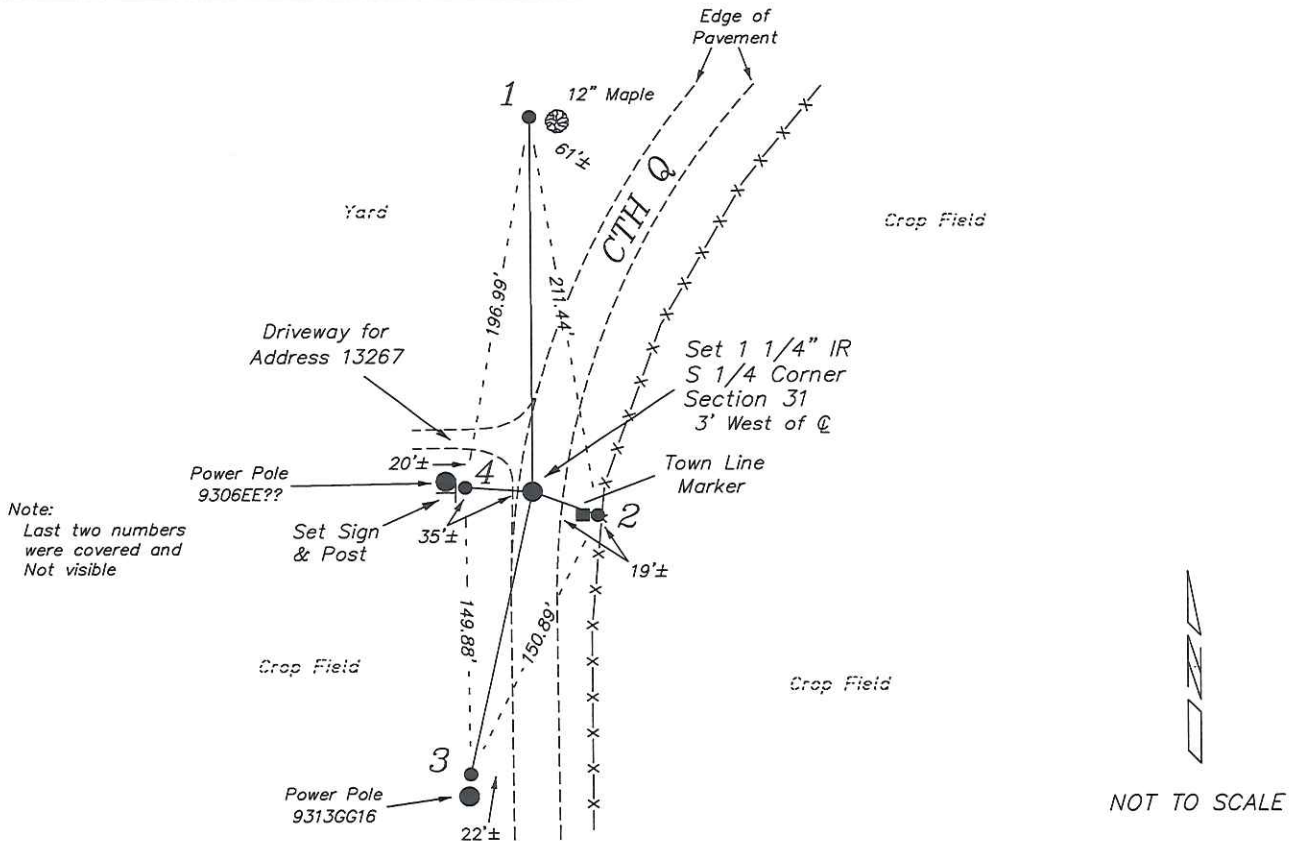
Rodney Maxwell was at this corner, in September 1998, during a survey in Section 31. He shows an existing Harrison Marker at this corner.

Gary Sime was at this corner, in January 2010, during a survey in Section 31. He shows an existing Mag Nail at this corner.

Gary Sime was at this corner, in February 2011, during a survey in Section 31. He shows an existing Mag Nail at this corner.

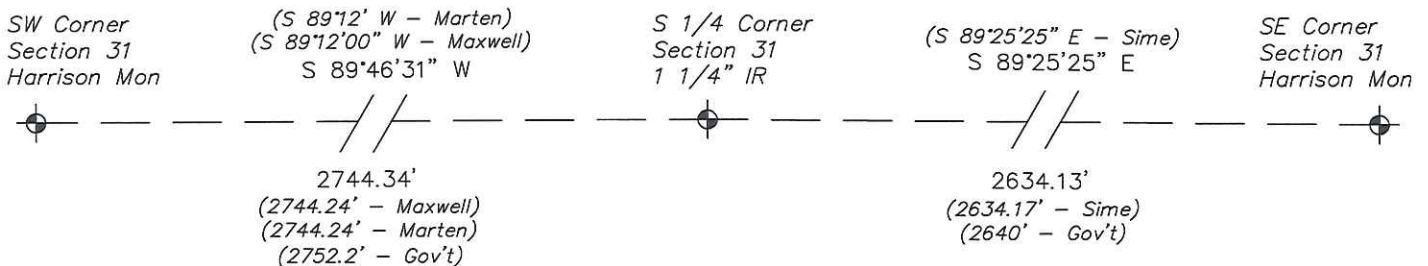
RECORD OF DURABLE WITNESS MONUMENTS

NO	DESCRIPTION	BEARING	DISTANCE
1	Set 3/4" x 18" Iron Rod 1' West of a 12" Maple	N 00°11'35" W	196.14'
2	Set 3/4" x 18" Iron Rod 1' East of Town Line Marker	S 69°52'42" E	36.17'
3	Set 3/4" x 18" Iron Rod 1' North of Power Pole #9313GG16	S 12°33'55" W	151.32'
4	Set 3/4" x 18" Iron Rod 1' East of Power Pole 9306EE??	N 86°27'20" W	24.79'



PLAN VIEW DRAWING OF REFERENCE TIES

Map Showing Distance And Direction To Other Public Land Survey Corners Used For Re-Establishing The Corner



I, Laurence E Johns III RLS 2804, Registered Land Surveyor, hereby certify that the corner location shown on this record was determined by me or under my direction and control, and that this U.S. Public Land Survey Monument Record is correct and complete to the best of my knowledge and belief.



Laurence E. Johns III
 Laurence E Johns III RLS 2804
 Eagle Ridge Surveying, LLC
 PO Box 213
 Wilton, Wisconsin
 9 October 2013

I, William C. Jung, do hereby certify that on the 5th day of July 1978, I found (evidence) (~~no evidence~~) of the N $\frac{1}{4}$ corner of Section 6, T 17 N, R 3 W Fourth Principal Meridian, and I re-established said corner according to the Wisconsin Statutes as shown and described hereon.

21803310020

History of original corner establishment:

Fred Holden shows a stone at this corner in his notes of May, 1910.

Description of corner evidence found:

Found a 3/4" iron bar used in previos surveys and replaced it with a Harrison marker.

Dated this 11th day of Jan. 1979.

William C. Jung, R.L.S. 1323

Crew Chief, County Surveyor's
Title Office

COUNTY SURVEYOR FORM NO. 1

Description of corner and witness monuments, references and accessories used to perpetuate the original or re-established location of this corner:

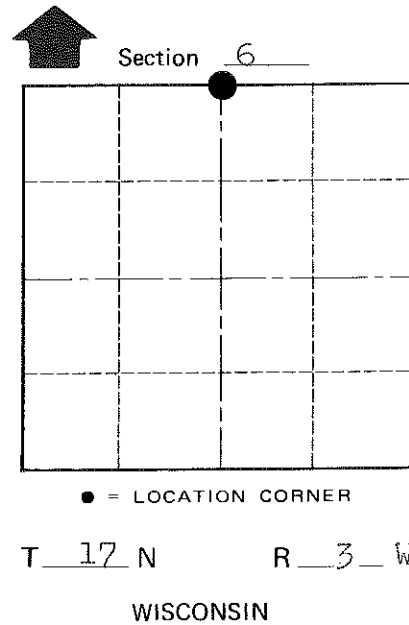
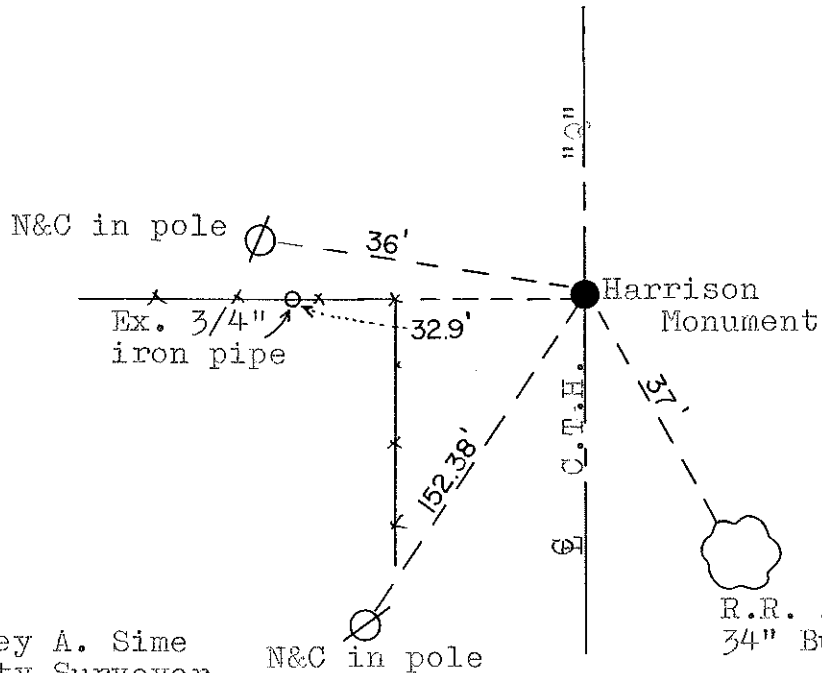
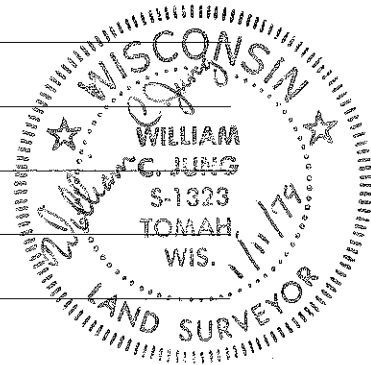
Replaced 3/4" iron bar with Harrison, flush.
Did not find stone.

Witnesses to corner location:

W. Jung

D. Dade

G. Dechant



SURVEY CONTROL ORDER

Horizontal	_____
Vertical	_____

Approved by: Harley A. Sime
County Surveyor

WISCONSIN COORDINATE SYSTEM

Corner	East (X)	North (Y)	Elevation (Z)	Zone
Control Sta. Name				

City, Village or Town Angelo

County of Monroe

I, Gary L. Dechant, do hereby certify that on the 27th day of October 19 87, I found (evidence) ~~XXXXXXX~~ of the N₁/₂ corner of Section 12, T 17 N, R 3 W Fourth Principal Meridian, and I re-established said corner according to the Wisconsin Statutes as shown and described hereon.

Dated this 9th day of Nov. 19 87.

Gary L. Dechant

Registered Land Surveyor, 1744
Title

History of corner establishment since Original Government Survey

Description of corner evidence found:

George Baker, Monroe County Highway Commissioner, contacted the County Surveyor's Office and requested removal of the Harrison marker at this corner as highway repair was needed. Checked ties, reset Harrison upon highway repair completion.

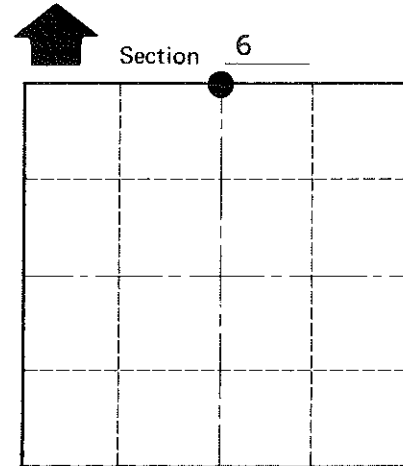
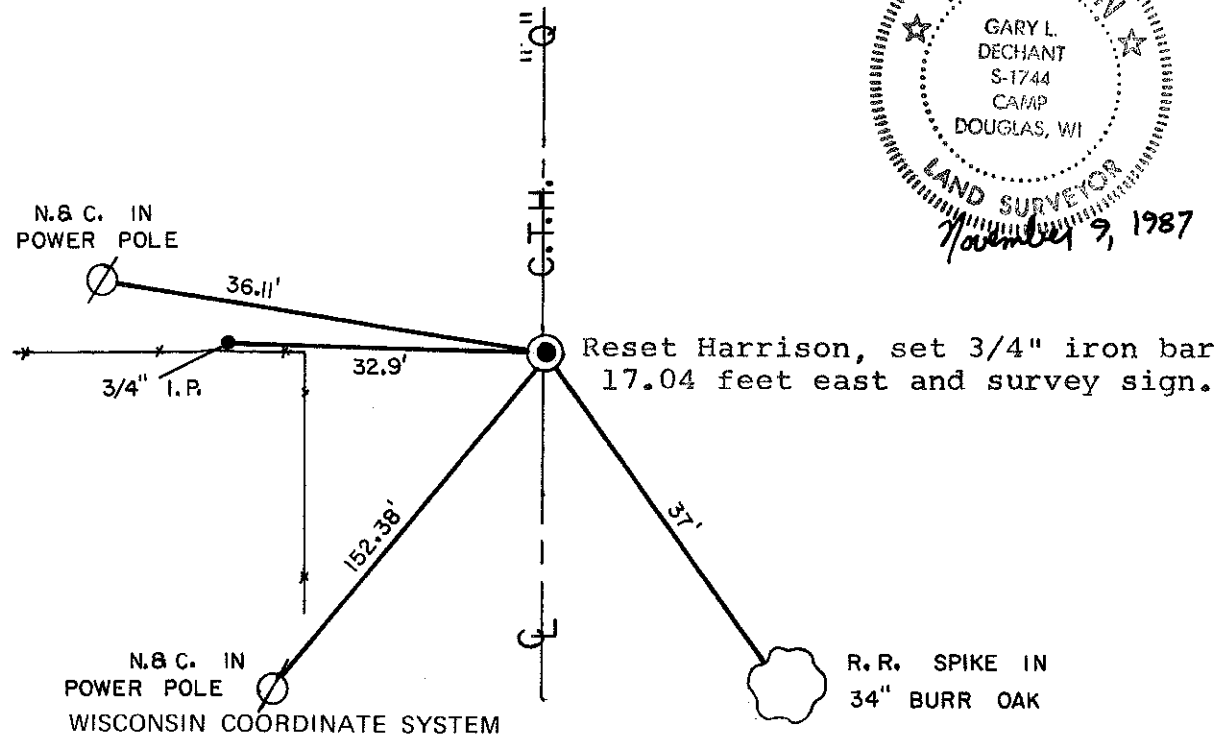
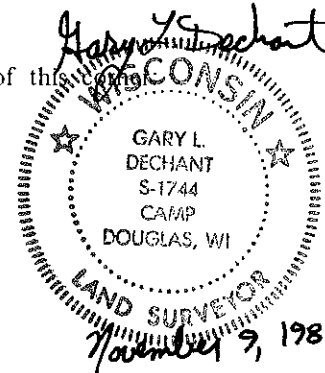
COUNTY SURVEYOR FORM NO. 1

Description of corner and witness monuments, references and accessories used to perpetuate the original or re-established location of this corner:

Witnesses to corner location:

David E. Madison

Timothy S. Frederick



● = LOCATION CORNER

T 17 N R 3 W

WISCONSIN

SURVEY CONTROL ORDER

Horizontal	_____
Vertical	_____

Corner	East (X)	North (Y)	Elevation (Z)	Zone
Control Sta. Name				

~~XXXXXXX~~ Village or Town Angelo

County of Monroe