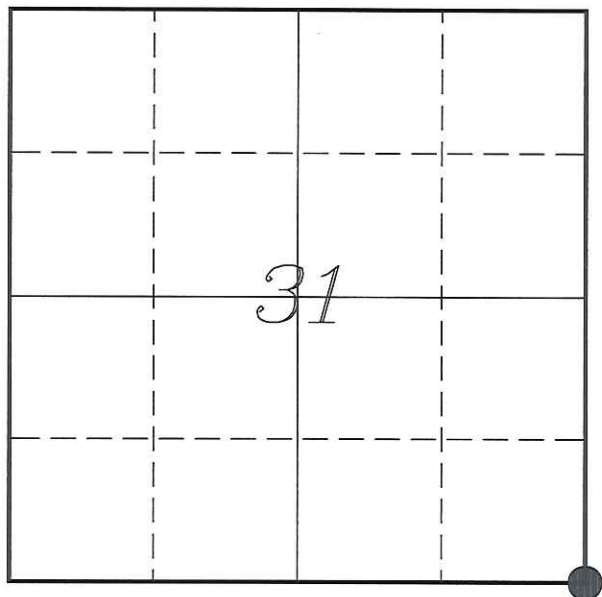


U. S. PUBLIC LAND SURVEY MONUMENT RECORD

SECTION 31, T18N, R3W, TOWN OF LAFAYETTE
MONROE COUNTY, WISCONSIN



LOCATION OF LANDMARK

MONROE COUNTY COORDINATE SYSTEM	
Northing	394854.160
Easting	636876.527
Datum	NAD 1983 (1991)
Elevation	
Datum	
TYPE OF LANDMARK:	
Existing Harrison Monument	
BEARINGS ARE REFERENCED TO:	
Monroe County Coordinates	

Witnesses: Laurence E Johns III

Date: 9 October 2013

Describe any record evidence, monument evidence, testimonial evidence or any other material evidence you considered and whether the monument was found or restored through acceptance of an obliterated evidence location.

No bearing trees of record were located.

Found the Harrison Monument in line with an old North/South fence.

Measurements indicate that this is the same monument as used in previous surveys.

Accepted the location of this Harrison Monument as the best available evidence of the original government corner and set 4 ties as shown.

Describe or show any material discrepancy between the location of the restored corner and that of the corner previously restored or re-established.

Uriah Biggs established this corner in November 1845.

Fred Holden was at this corner, in May 1910, during a survey in Section 6. He shows that there is a stone at this corner.

Kim Pritzlaff was at this corner, in July 1975, during a survey in Section 31. In April 1977, Harley Sime prepared a tie sheet showing that a 1 1/4" iron rod was replaced with a Harrison Monument during Pritzlaff's survey.

Bill Jung shows this corner as a Harrison Monument on a Section Breakdown Sheet for Section 5, dated May 1980.

Norman Hurlburt was at this corner, in September 1990, during a survey in Section 6. He shows a Harrison Monument at this corner.

Bryan Meyer was at this corner, in April 1993, during a survey in Section 32. He shows a Harrison Monument at this corner.

Gary Sime was at this corner, in April 1994, during a survey in Section 5. He shows an existing Harrison Monument at this corner.

Rodney Maxwell was at this corner, in April 2002, during a survey in Section 5. He shows an existing Harrison Monument at this corner.

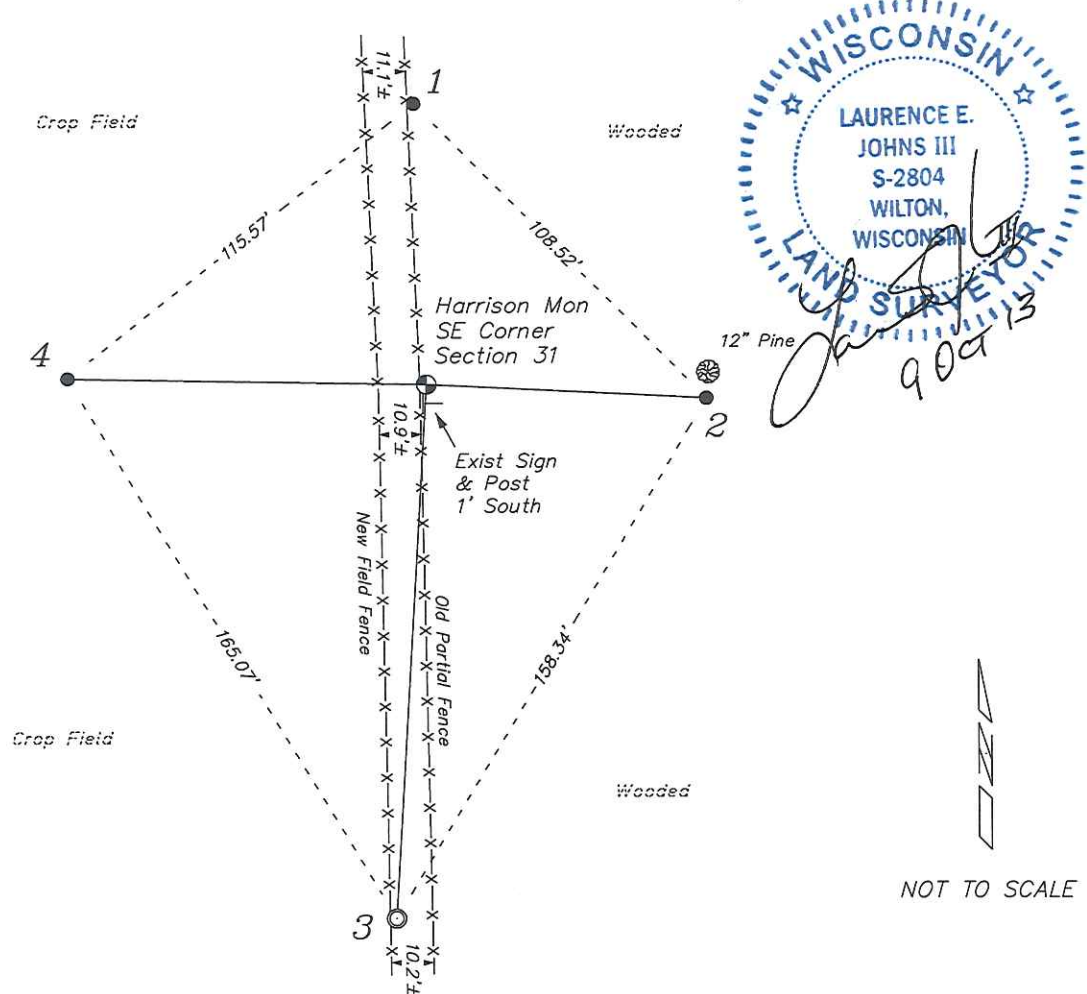
Scott Dunnun was at this corner, in July 2004, during a survey in Sections 21 & 32. He shows a found Harrison Monument.

Stephen Solberg was at this corner, in September 2006, during a survey in Section 32. He shows an existing Harrison Monument at this corner.

Gary Sime was at at this corner again, in January 2010 and February 2011, during surveys in Section 31. He shows an existing Harrison Monument at this corner.

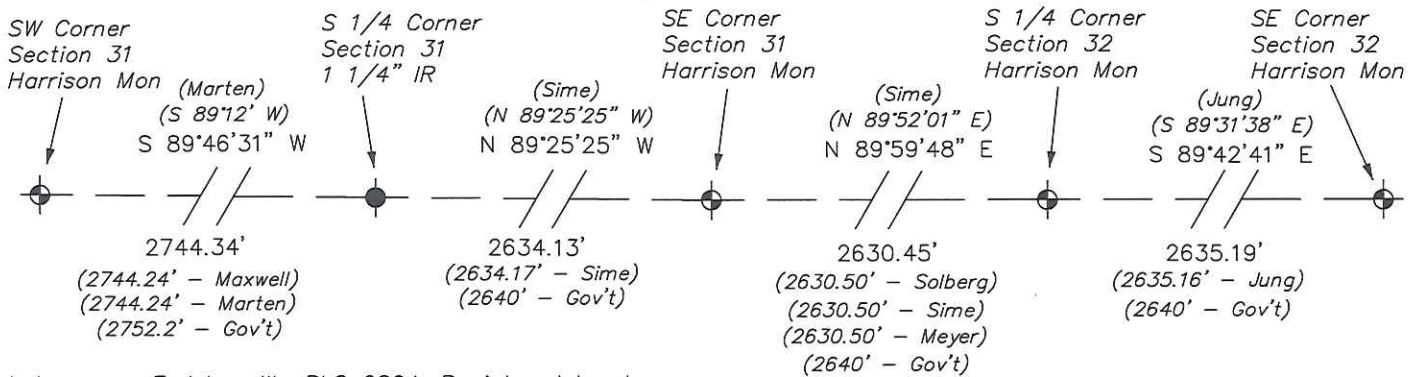
RECORD OF DURABLE WITNESS MONUMENTS

NO	DESCRIPTION	BEARING	DISTANCE
1	Set 3/4" x 18" Iron Rod In Old Fence Line	N 02°18'56" W	73.85'
2	Set 3/4" x 18" Iron Rod South Side of 12" Pine	S 87°02'53" E	73.02'
3	Existing 1 1/2" Iron Pipe In New Fence Line	S 03°26'14" W	139.88'
4	Set 3/4" x 18" Iron Rod In Field - 12" Below Surface	N 88°52'01" W	93.45'



PLAN VIEW DRAWING OF REFERENCE TIES

Map Showing Distance And Direction To Other Public Land Survey
Corners Used For Re-Establishing The Corner



I, Laurence E Johns III RLS 2804, Registered Land Surveyor, hereby certify that the corner location shown on this record was determined by me or under my direction and control, and that this U.S. Public Land Survey Monument Record is correct and complete to the best of my knowledge and belief.

Laurence E. Johns III

Laurence E Johns III RLS 2804
Eagle Ridge Surveying, LLC
PO Box 213
Wilton, Wisconsin
9 October 2013

21803310000

Harley A. Sime, do hereby certify that on the 24th day of July 1975, I found (evidence) (~~no evidence~~) of the Northwest corner of Section 5, T 17 N, R 3 W, Fourth Principal Meridian, and I re-established said corner according to the Wisconsin Statutes as shown and described hereon.

History of original corner establishment:

Fred A. Holden said there was a stone at this corner in May 1910.

Description of corner evidence found:

Replaced a 1 1/4" iron bar with a Harrison monument.

Dated this 8th day of April 1977.

Approved: HARLEY A. SIME
MONROE CO. SURVEYOR

County Surveyor
Title

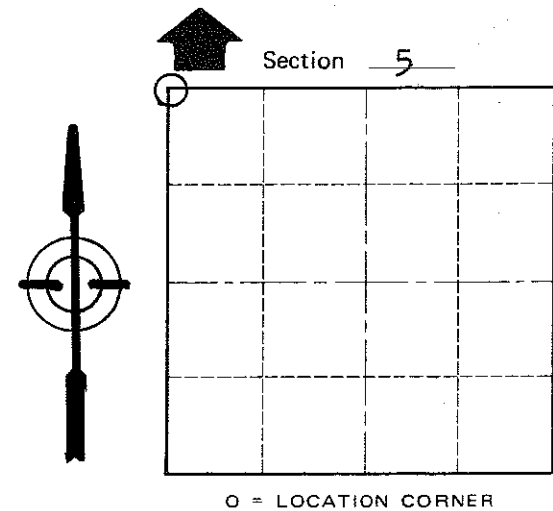
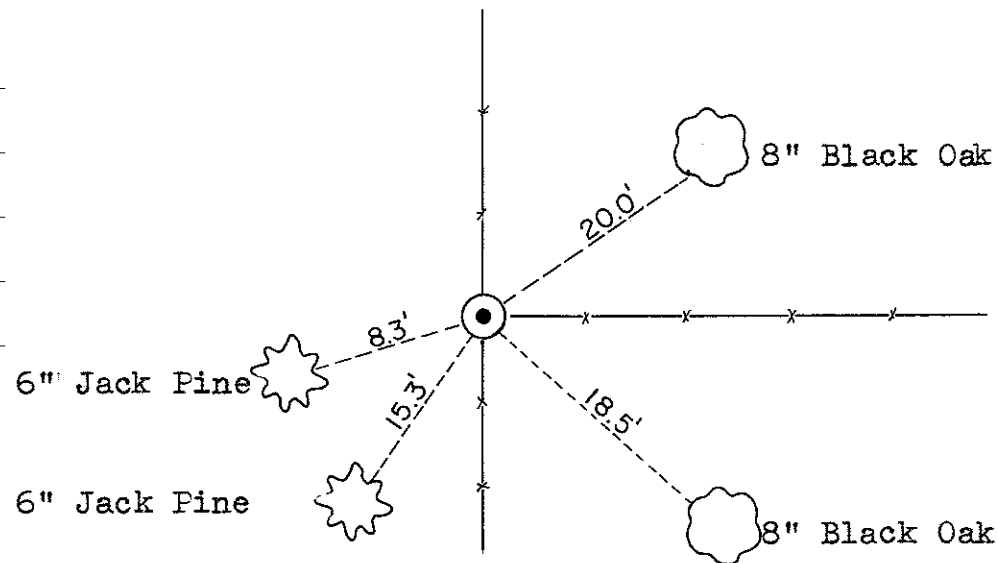
COUNTY SURVEYOR FORM NO. 1

Description of corner and witness monuments, references and accessories used to perpetuate the original or re-established location of this corner:

Set Harrison monument

Witnesses to corner location:

Pritzlaff
Pietz



T 17 N R 3 W
WISCONSIN

SURVEY CONTROL ORDER

Horizontal	_____
Vertical	_____

WISCONSIN COORDINATE SYSTEM

Corner	East (X)	North (Y)	Elevation (Z)	Zone
Control Sta. Name				

City, Village or Town Angelo

County of Monroe