

CERTIFICATE

CERTIFIED LAND CORNER

No. 112

21803300020

I, Norman R. Hurlburt, do hereby certify that on the second day of August 1984, I found ~~(evidence)~~ (no evidence) of the S/4 corner of Sec. 30, T 18 N, R 3W, Fourth Principal Meridian, and I re-established said corner according to the Wisconsin Statutes as shown and described hereon.

Dated this 21 day of Aug 1984.

Norman R. Hurlburt
REGISTERED LAND SURVEYOR 5-110A
 Title

History of original corner establishment:

No record of remonumentation since original survey.

Description of corner evidence found:

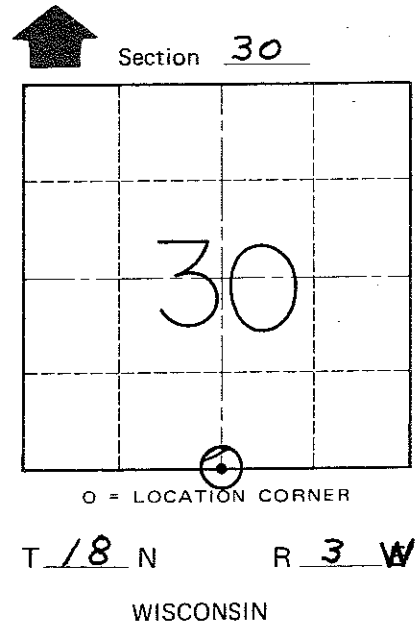
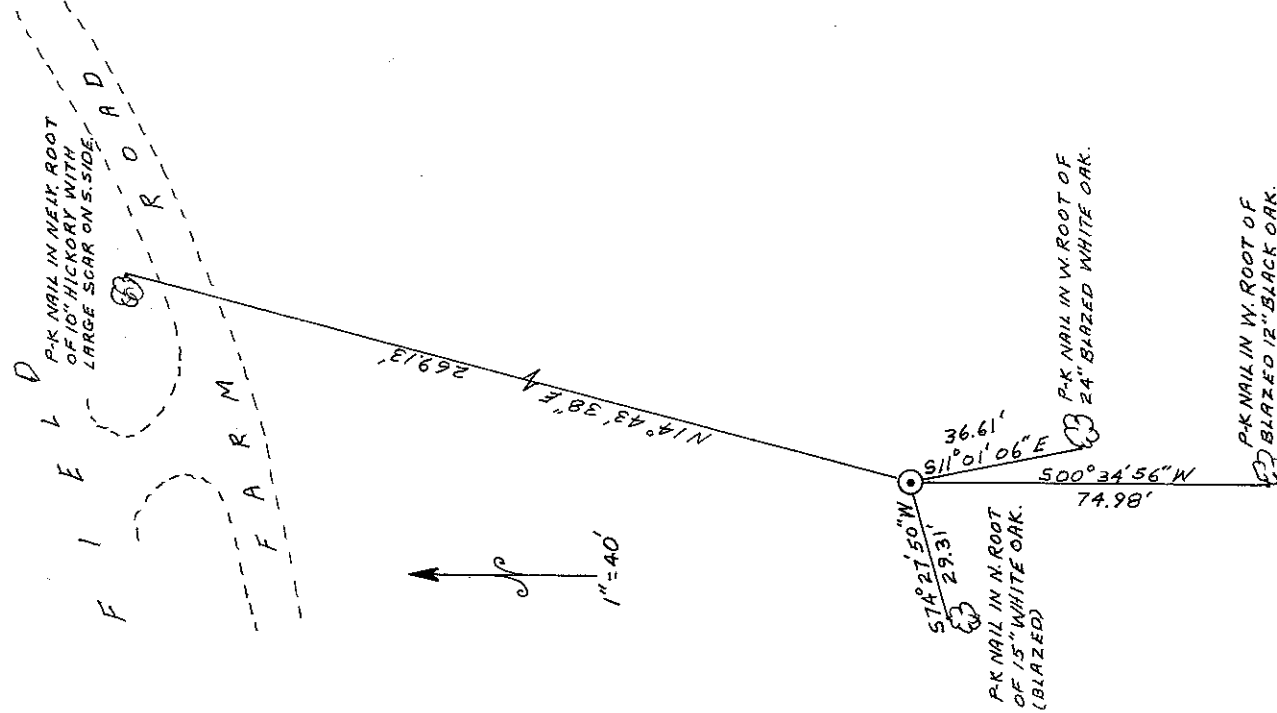
No evidence found. Corner was re-established at proportional distance between section corners.

Description of corner and witness monuments, references and accessories used to perpetuate the original or re-established location of this corner:

Witnesses to corner location:

N. Hurlburt
D. Melichar
L. Greeno (landowner)

COUNTY SURVEYOR FORM NO. 1



SURVEY CONTROL ORDER

Horizontal	_____
Vertical	_____

WISCONSIN COORDINATE SYSTEM

Corner	East (X)	North (Y)	Elevation (Z)	Zone
Control Sta. Name				

City, Village or Town Lafayette
 County of Monroe