

21803300000

I, William C. Jung, do hereby certify that on the 14th day of May 1980, I found (evidence) ~~(no evidence)~~ of the Southwest corner of Section 29, T 18 N, R 3 W Fourth Principal Meridian, and I re-established said corner according to the Wisconsin Statutes as shown and described hereon.

Dated this 5th day of March 1981.

William C. Jung
William C. Jung, R.L.S. 1323
Title

History of corner establishment since Original Government Survey

Bergman was at this corner in 1932. Lenschow's map of November, 1957, shows an iron pipe at this corner. Feddersen shows an existing 3/4" round bar at this corner in March of 1977.

Description of corner evidence found:

Replaced the existing 3/4" iron bar with a Harrison marker.

Approved: **HARLEY A. SIMÉ**
MONROE CO. SURVEYOR

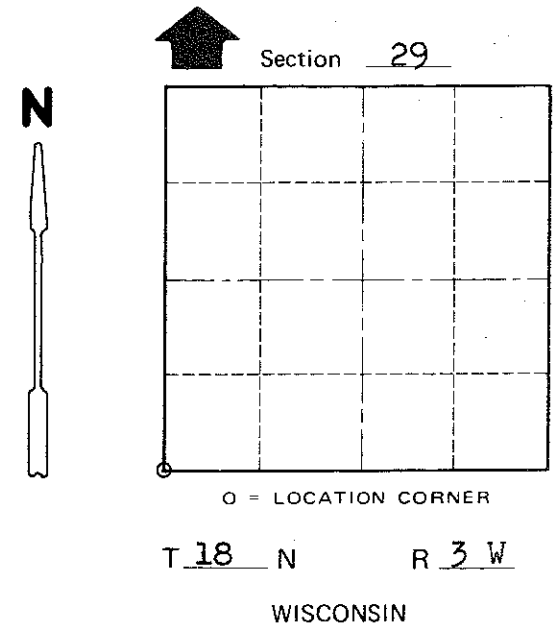
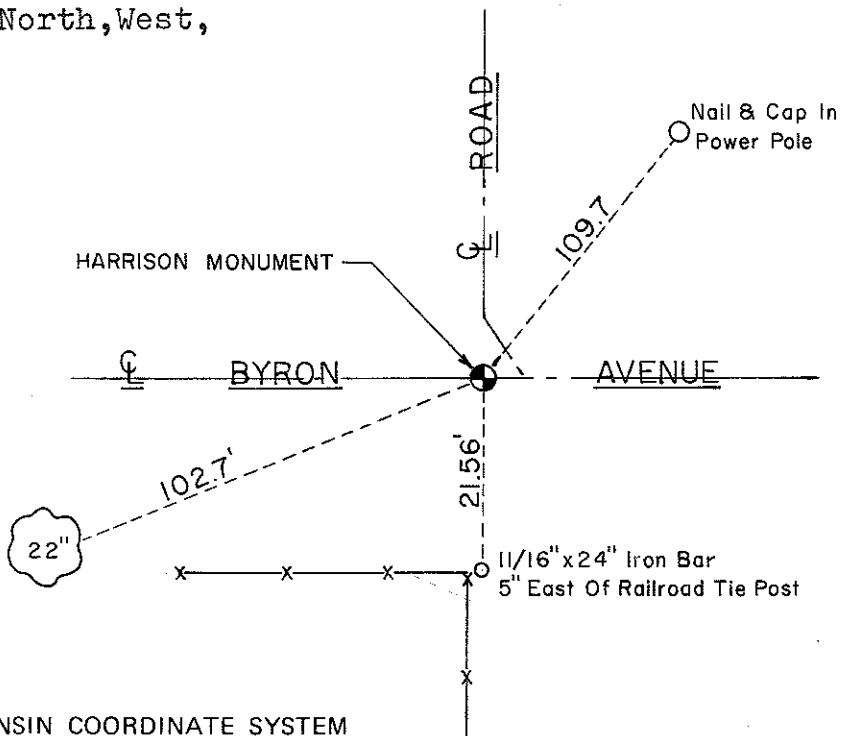
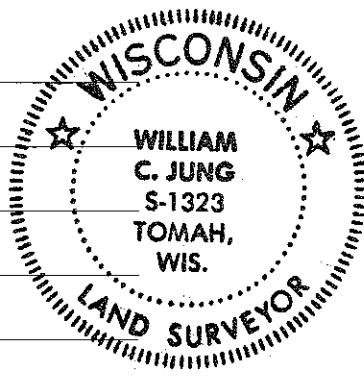
COUNTY SURVEYOR FORM NO. 1

Description of corner and witness monuments, references and accessories used to perpetuate the original or re-established location of this corner:

Nails and caps were set as 2 foot offsets North, West, and Southeast of the corner.

Witnesses to corner location:

William Jung
Todd Tormoen
Scott Sowers



SURVEY CONTROL ORDER

Horizontal	_____
Vertical	_____

WISCONSIN COORDINATE SYSTEM

Corner	East (X)	North (Y)	Elevation (Z)	Zone
Control Sta. Name				

City, Village or Town Lafayette
County of Monroe
Wisconsin