

# 96

**U.S. PUBLIC LAND CORNER  
MAINTENANCE**

**Corner ID : E1/4 Sec. 29, T18N-R3W  
21803292000**

| <u>DATE</u>      | <u>CREW</u>                             | <u>MONUMENT TYPE</u> -----  |
|------------------|---|---|
| October 13, 2016 | Zachariah P. Dechant<br>Gary L. Dechant | Existing Harrison intact. Down 2", center line CTH "I", 12' south<br>of driveway Fire No. 11486 CTH "I" |

| <u>References:</u>   | <u>Bearing</u> | <u>Distance</u> |
|--|----------------|-----------------|
| 1) Set 3/4" x24" round iron bar, down 2" on line with SW corner of shed  | N58E           | 59.32'          |
| 2) Set 3/4" x24" round iron bar, down 2" 9' south of 4' Maple & 12" Spruce<br>on line with SW corner of house' | S78E           | 44.16           |
| 3) Set 3/4" x24" round iron bar, down 12" in field, south of gravel field entrance                             | S58W           | 46.64'          |
| 4) Set 3/4" x24" round iron bar, down 6" in lawn   | N78W           | 51.21'          |
| 5) Existing 1/4" iron pipe   | west           | 32.80'          |

**Harrison and reference markers set on straight lines.**



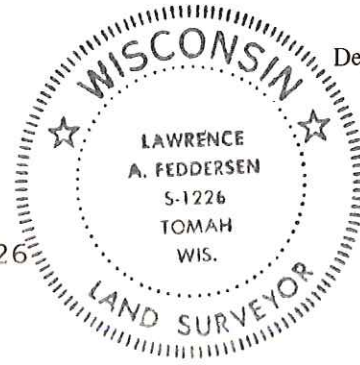
See Reverse Side For Maintenance

I, Lawrence A. Feddersen, do hereby certify that on the 24th day of August 1978, I found (evidence) (no evidence) of the East Quarter corner of Section 29, T 18 N, R 3 W, Fourth Principal Meridian, and I re-established said corner according to the Wisconsin Statutes as shown and described hereon.

Dated this 3 day of October 1978.

Lawrence A. Feddersen

REGISTERED LAND SURVEYOR S-1226 Title



History of original corner establishment:

In November of 1902, Fred Holden re-established this corner. In November of 1957, Henry Henschow set an iron pipe at the corner (Vol.1, C.S.M., P.4).

Description of corner evidence found:

We found the iron pipe, however, it did not agree with Henschow's recorded 1/2 mile distances North, South, and East to the C 1/4 corner of Section 28. The iron pipe is in the East-West fence, which itself, proves to be nearly midway between the section corners, however, the pipe is almost 33' West of where it is purported to be according to measurements to the C 1/4 corner of Section 28. We looked 33' East of the iron pipe, but did not find another iron pipe. The corner was re-established on line and midway between the NE & SE section corners. This location agrees very well with Henschow's distance from the C 1/4 corner of Section 28. This location agrees with a now lost bearing tree of record (Holden's), whose former location was (OVER)----

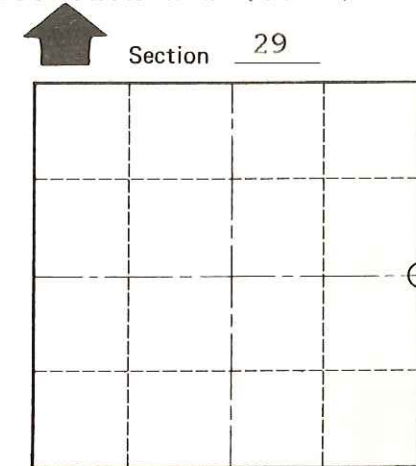
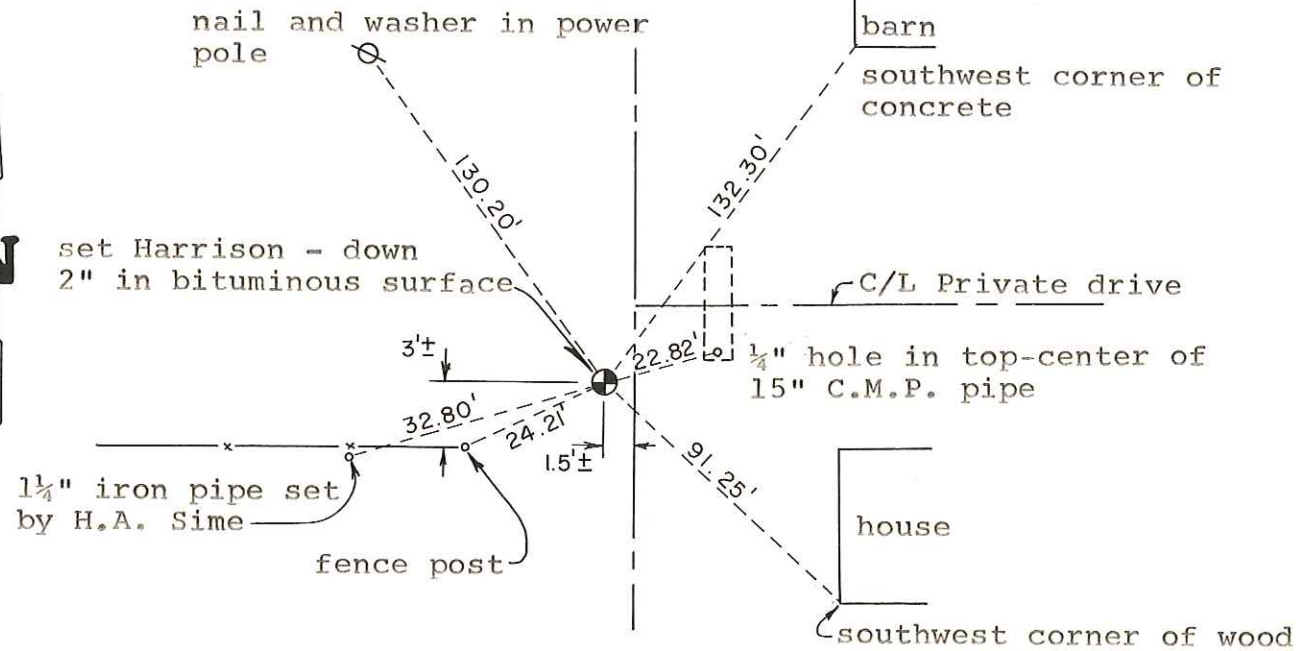
Description of corner and witness monuments, references and accessories used to perpetuate the original or re-established location of this corner:

Witnesses to corner location:

Lawrence A. Feddersen

Douglas J. Malliet

Steven R. Towne



O = LOCATION CORNER  
T 18 N R 3 W  
WISCONSIN

See Reverse Side For Maintenance

SURVEY CONTROL ORDER

|            |       |
|------------|-------|
| Horizontal | _____ |
| Vertical   | _____ |

WISCONSIN COORDINATE SYSTEM

| Corner            | East (X) | North (Y) | Elevation (Z) | Zone |
|-------------------|----------|-----------|---------------|------|
| Control Sta. Name |          |           |               |      |

City, Village or Town of LAFAYETTE

County of MONROE

COUNTY SURVEYOR FORM NO. 1

shown to us by Harold Smith, a local landowner and a lifelong resident of the area.