

109

**U.S. PUBLIC LAND CORNER
MAINTENANCE**

**Corner ID : SE Sec. 29, T18N-R3W
21803290000**

<u>DATE</u>	<u>CREW</u>	<u>MONUMENT TYPE</u> -----
October 13, 2016	Zachariah P. Dechant Gary L. Dechant	Existing Harrison intact. Down 2" at CTH "I"/Filmore Ave intersection

<u>References:</u>	<u>Bearing</u>	<u>Distance</u>
1) Set 3/4" x24" round iron bar, down 12" in field	N33E	64.82'
2) Set 3/4"x24" round iron bar, down 12" in field	S42E	59.07'
3) Set 3/4"x24" round iron bar, down 12" in field	S33W	78.57'
4) Set 3/4"x24" round iron bar, down 12" in field	N42W	65.13'

Harrison and reference markers set on straight lines.



See Reverse Side For Maintenance

I, Lawrence A. Feddersen, do hereby certify that on the 23rd day of August 1978, I found (evidence) ~~(XXXXXX)~~ of the Southeast corner of Section 29, T 18 N, R 3 W, Fourth Principal Meridian, and I re-established said corner according to the Wisconsin Statutes as shown and described hereon.

Dated this 3 day of October 1978.

Lawrence A. Feddersen

REGISTERED LAND SURVEYOR S-1226 Title



History of original corner establishment:

In November, 1902, Fred Holden set a stone at this corner. In November, 1957, Henry Lenschow set an iron pipe at the corner.

Description of corner evidence found:

We searched for the iron pipe, but did not find it. We did not excavate for the stone. We found a P-K nail at the intersection of road centerlines set by H.A. Sime & Asso. We accepted the location of the P-K nail and replaced it with a Harrison. The Distance to the SW corner of Section 29 agrees reasonably well with Lenschow's recorded distance.

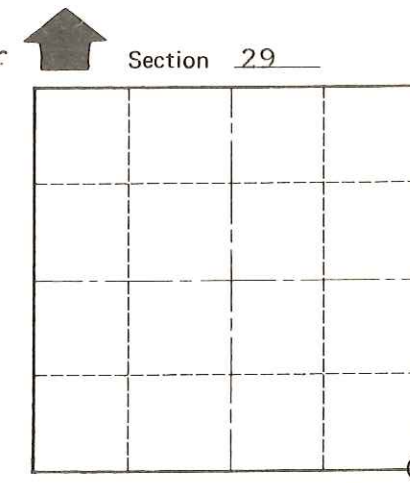
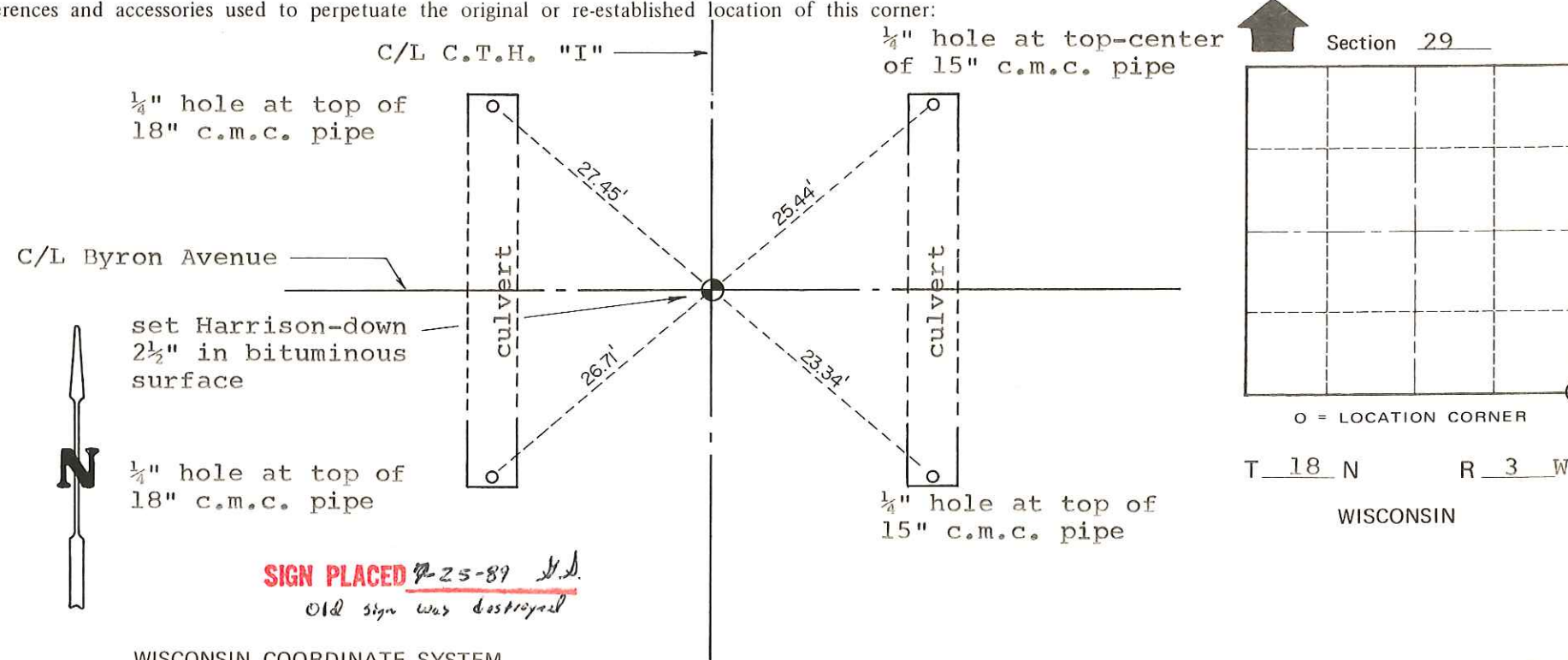
Description of corner and witness monuments, references and accessories used to perpetuate the original or re-established location of this corner:

Witnesses to corner location:

Lawrence A Feddersen

Douglas J. Malliet

Steve Towne



O = LOCATION CORNER
T 18 N R 3 W
WISCONSIN

See Reverse Side For Maintenance

SURVEY CONTROL ORDER

Table with 2 columns: Control type (Horizontal, Vertical) and a blank space for order.

Table with 5 columns: Corner, Control Sta. Name, East (X), North (Y), Elevation (Z), Zone.

~~City, Village or Town~~ of LAFAYETTE

County of MONROE

COUNTY SURVEYOR FORM NO. 1