

CERTIFICATE

I, Nicholas M. Hillmer, do hereby certify that this document and the data contained herein was prepared by me or under my direct supervision and that I am a duly Licensed Land Surveyor under the laws of the State of Wisconsin.

Dated this 21st day of May, 2013



Nicholas M. Hillmer, P.L.S. 2909
Anderson Engineering of Minnesota, LLC.

CERTIFIED LAND CORNER

History of corner established since Original Government Survey

Holden was at this corner in November of 1902. The 1940's McCoy boundary notes do not show a corner at this location. In December of 1982 William Jung set a Harrison monument on line with monuments found at the C 1/4 and CE 1/16 corners and at a distance from the CE 1/16 equal to the distance between the C 1/4 and CE 1/16 of Section 28.

Description of evidence found

On August 29th, 2012, Anderson Engineering of Minnesota located the Harrison monument 0.1 feet above grade and 1.4 feet east of a 4 inch square wood post. An aluminum sign with survey marker sign is 1.0 foot east of the mark.

No. 21803282000



Description of corner and witness monuments, references and accessories used to perpetuate the original or re-established location of this corner:

Witnesses to corner location:

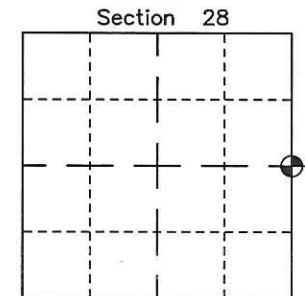
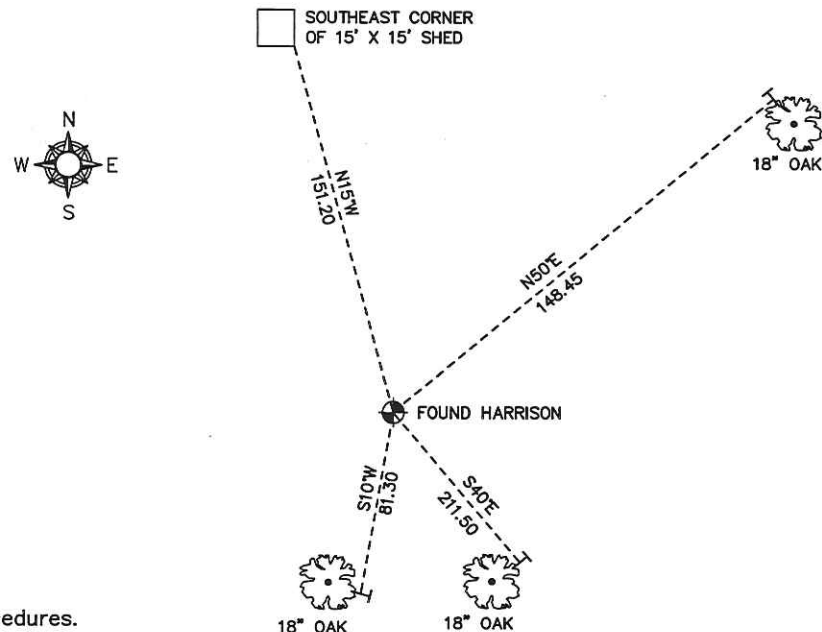
Nick Hillmer
Josh Oslund
Dan Greenwald

MONROE COUNTY
COORDINATE SYSTEM
NAD 1983 (2007)

HARRISON MONUMENT
Northing (Y) 402780.32
Easting (X) 647342.94

Base Station - 22 182W
Northing (Y) 408053.25
Easting (X) 679287.00

All distances are shown in U.S. Survey Feet.
Ties are to 60D nails set in trees.
Bearings are for tie reference purposes only.
Coordinates were derived from RTK GNSS procedures.



⊕ = LOCATION CORNER
Corner I.D. E 1/4 28
T 18 N R 3 W
Town of La Fayette
Monroe County, WI.

21803282000

I, William C. Jung, do hereby certify that on the 22nd day of December 19 82, I found ~~evidence~~ (no evidence) of the West 1/4 corner of Section 27, T 18 N, R 3 W Fourth Principal Meridian, and I re-established said corner according to the Wisconsin Statutes as shown and described hereon.

Dated this 27th day of Jan. 19 83.

William C. Jung

Deputy County Surveyor

Title

History of corner establishment since Original Government Survey

Holden was at this corner in November of 1902. The Camp McCoy survey in the 1940's does not show a corner being found or set at this corner.

Description of corner evidence found:

I set the corner at a computed location on line with the monuments I found at the C1/4 and CE1/16 Corners, and at a distance from the CE1/16 equal to the distance between the C1/4 and CE1/16.

(of Section 28)

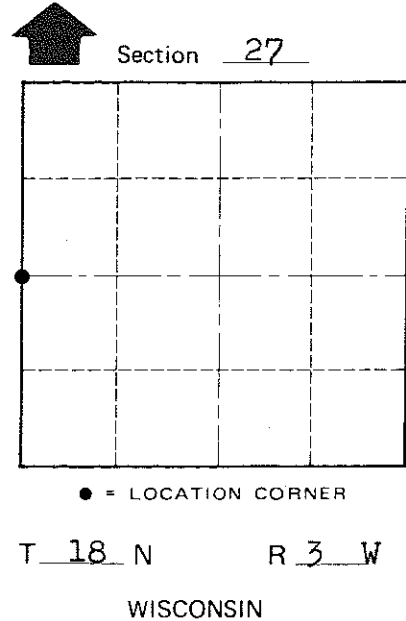
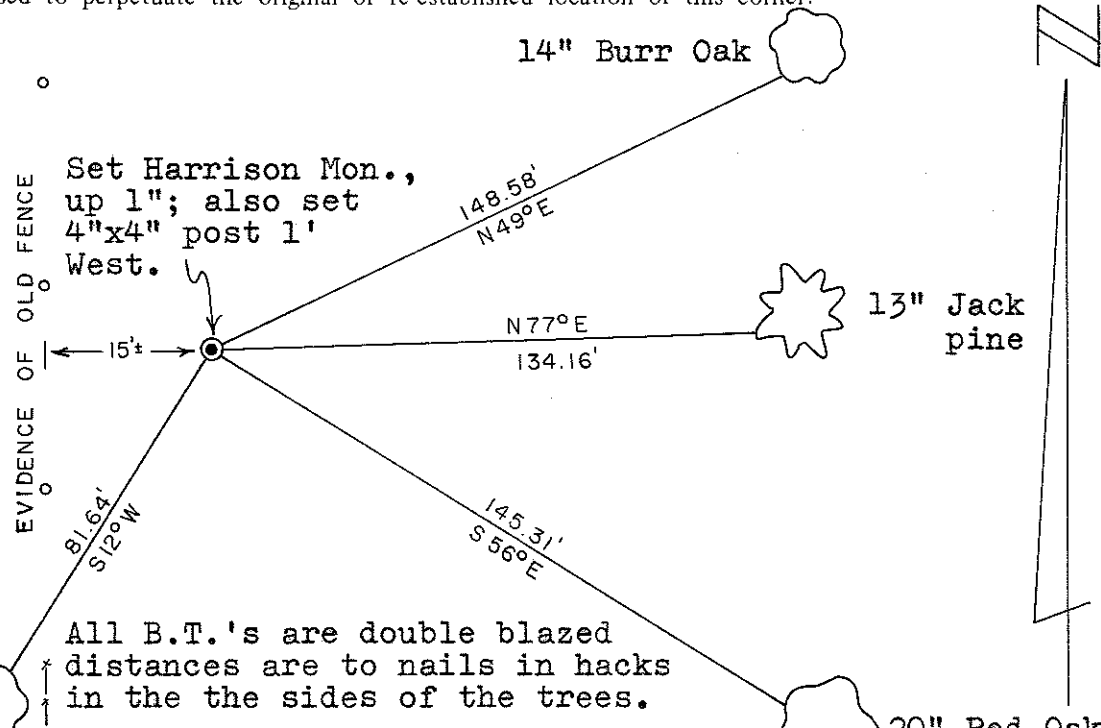
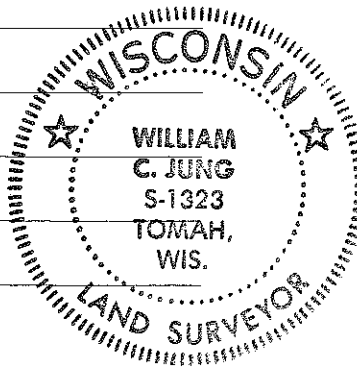
Approved: **HARLEY A. SIME**
MONROE CO. SURVEYOR

Description of corner and witness monuments, references and accessories used to perpetuate the original or re-established location of this corner:

Witnesses to corner location:

Jung

Meyer



All B.T.'s are double blazed distances are to nails in hacks in the the sides of the trees.

WISCONSIN COORDINATE SYSTEM

SURVEY CONTROL ORDER

Horizontal	_____
Vertical	_____

Corner	East (X)	North (Y)	Elevation (Z)	Zone
Control Sta. Name				

~~City, Village or~~ Town of LaFayette
County of Monroe

COUNTY SURVEYOR FORM NO. 1