


CERTIFICATE

I, Nicholas M. Hillmer, do hereby certify that this document and the data contained herein was prepared by me or under my direct supervision and that I am a duly Licensed Land Surveyor under the laws of the State of Wisconsin.

Dated this 21st day of May, 2013



Nicholas M. Hillmer, P.L.S. 2909
Anderson Engineering of Minnesota, LLC.

CERTIFIED LAND CORNER

History of corner established since Original Government Survey

Fred Holden was here in February of 1902. Harley Sime reset the corner in April of 1977 using the old Fort McCoy notes and the tie points. The corner was endangered in 1993. On April 4, 1993 Meyer and Sime checked the previous ties and established new ties. The Harrison of record was removed. On August 3, 1993 Meyer and Lobe set a 1 1/4 inch round iron bar at the corners location.

Description of evidence found

On August 29th, 2012, Anderson Engineering of Minnesota located the 1 1/4 inch solid round iron pipe 3 feet south of the centerline of the road.

No. 21803280000



Description of corner and witness monuments, references and accessories used to perpetuate the original or re-established location of this corner:

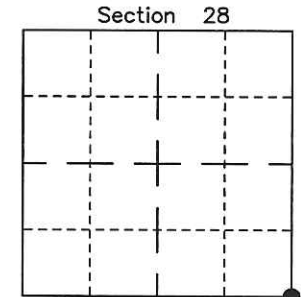
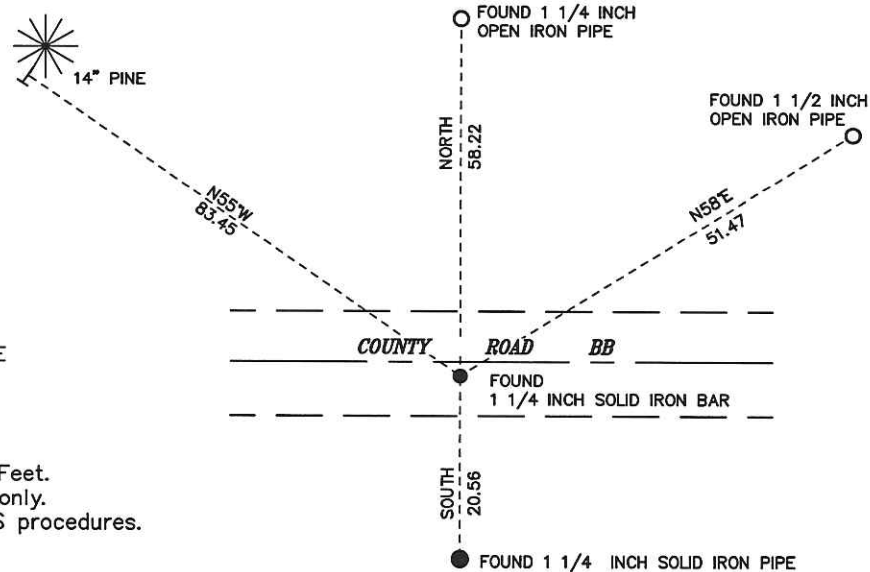
Witnesses to corner location:

Nick Hillmer
Josh Oslund
Dan Greenwald

MONROE COUNTY
COORDINATE SYSTEM
NAD 1983 (2007)

1 1/4 INCH SOLID IRON BAR
Northing (Y) 400124.37
Easting (X) 647348.49

Base Station - 22 182W
Northing (Y) 408053.25
Easting (X) 679287.00



● = LOCATION CORNER
 Corner I.D. SE 28
 T 18 N R 3 W
 Town of La Fayette
 Monroe County, WI.

All distances are shown in U.S. Survey Feet.
 Bearings are for tie reference purposes only.
 Coordinates were derived from RTK GNSS procedures.

CERTIFICATE

UPDATED
CERTIFIED LAND CORNER

No. 107
PAGE 2

I, Harley A. Sime, do hereby certify that on the 28th day of April 1977, I found (evidence) ~~XXXXXXXXXX~~ of the S.E. Section corner of Section 28, T 18 N, R 3W, Fourth Principal Meridian, and I re-established said corner according to the Wisconsin Statutes as shown and described hereon.

Dated this 1 day of June 1977.

County Surveyor
Title

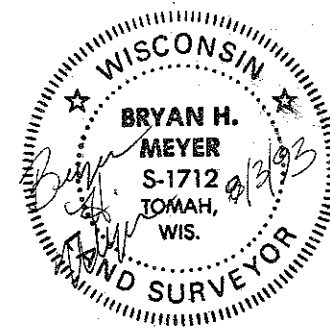
History of original corner establishment:

Holden was here in February of 1902

Description of corner evidence found:

Reset the corner using the old Fort McCoy notes and the tie points. Fits the existing field conditions.

UPDATE: The County Surveyor's office was notified that a road improvement project was to take place in the summer of 1993, endangering the location of this corner. On April 4, 1993, Meyer and Sime checked the previous ties and established new ties. The Harrison marker of record was removed. On August 3, 1993, Meyer and Lobe set a 1 1/4" x 30" round iron bar at the corner location in the newer hot-mix pavement.



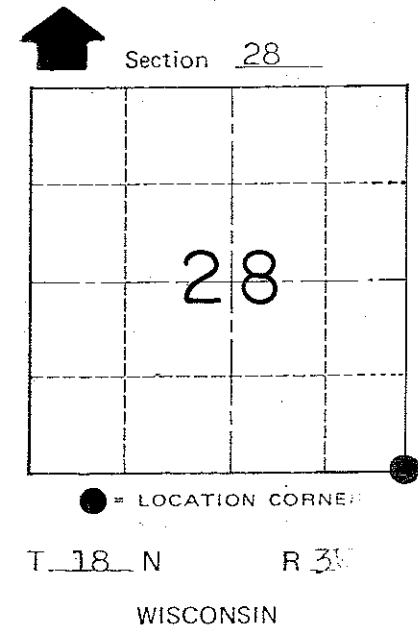
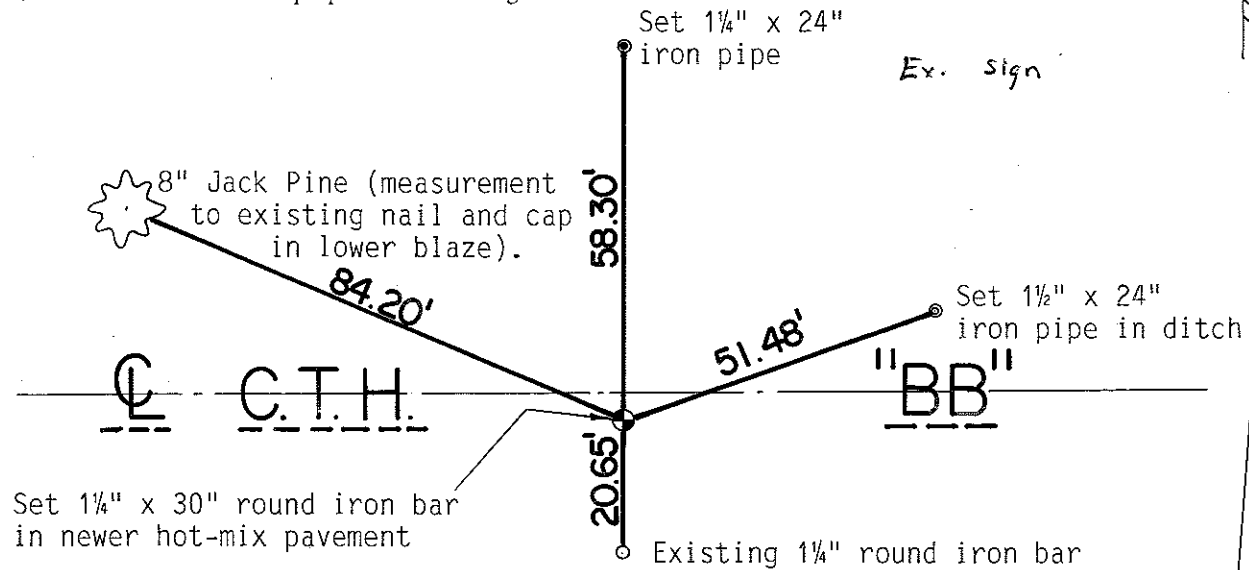
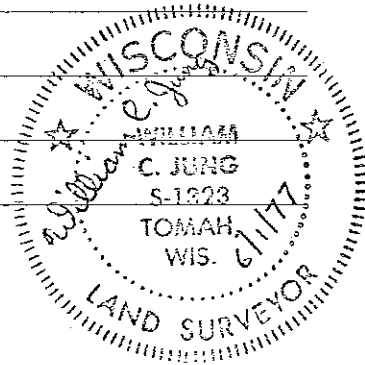
21803280000

Description of corner and witness monuments, references and accessories used to perpetuate the original or re-established location of this corner:

1993 CREW: Meyer, Lobe
DATE: August 3, 1993
WEATHER: Partly Cloudy, 70°±

Witnesses to corner location:

W. C. Jung - Crew Chief
L. Radcliffe



COUNTY SURVEYOR FORM NO. 1

SURVEY CONTROL ORDER

Horizontal _____
Vertical _____

WISCONSIN COORDINATE SYSTEM

Corner	East (X)	North (Y)	Elevation (Z)	Zone
Control Sta. Name				

~~XXXXXXXXXX~~ Town La Fayette

County of Monroe

I, Harley A. Sime, do hereby certify that on the 28th day of April 1977, I found (evidence) (~~no evidence~~) of the S.E. Section corner of Section 28, T 18 N, R 3W, Fourth Principal Meridian, and I re-established said corner according to the Wisconsin Statutes as shown and described hereon.

Dated this 1 day of June 1977.

History of original corner establishment:

Holden was here in February of 1902

Description of corner evidence found:

Reset the corner using the old Fort McCoy notes and the tie points. Fits the existing field conditions.

County Surveyor Approved: HARLEY A. SIME
Title MONROE CO. SURVEYOR

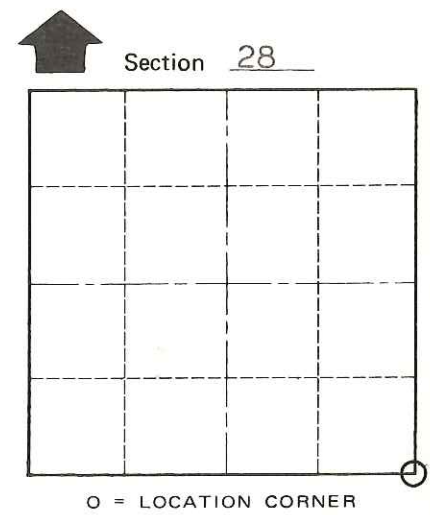
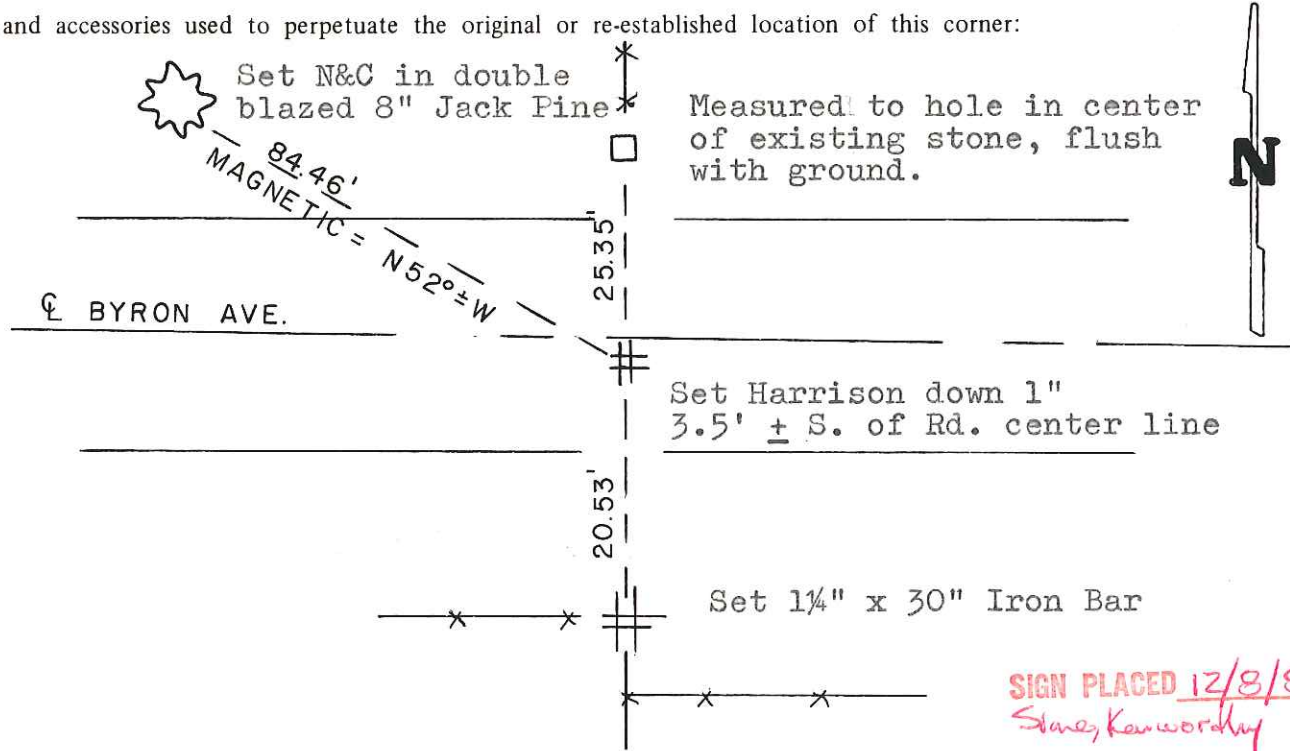
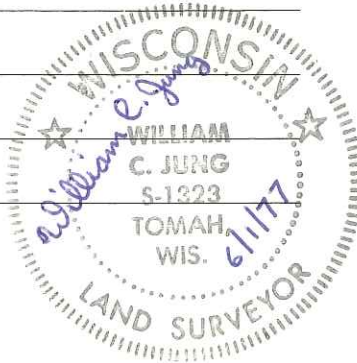
COUNTY SURVEYOR FORM NO. 1

Description of corner and witness monuments, references and accessories used to perpetuate the original or re-established location of this corner:

Witnesses to corner location:

W. C. Jung - Crew Chief

L. Radcliffe



T 18 N R 3W
WISCONSIN

SIGN PLACED 12/8/86
Stacy Kaworahuy

SIGN PLACED ~~_____~~

SURVEY CONTROL ORDER

Horizontal	_____
Vertical	_____

WISCONSIN COORDINATE SYSTEM

Corner	East (X)	North (Y)	Elevation (Z)	Zone
Control Sta. Name				

City, Village or Town La Fayette

County of Monroe

O.K.