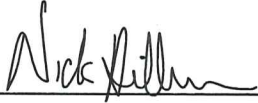


CERTIFICATE

I, Nicholas M. Hillmer, do hereby certify that this document and the data contained herein was prepared by me or under my direct supervision and that I am a duly Licensed Land Surveyor under the laws of the State of Wisconsin.

Dated this 21st day of May, 2013



Nicholas M. Hillmer, P.L.S. 2909
Anderson Engineering of Minnesota, LLC.

CERTIFIED LAND CORNER

History of corner established since Original Government Survey

The east quarter corner of Section 27 is referenced in Book 164 of Deeds, page 410 as the point of beginning of a cemetery.

Description of evidence found

On February 27th, 2013, Anderson Engineering of Minnesota located a 3/4 inch solid bar at the southeast corner of the cemetery. The solid bar is accepted as the best available evidence.

No. 21803272000



Description of corner and witness monuments, references and accessories used to perpetuate the original or re-established location of this corner:

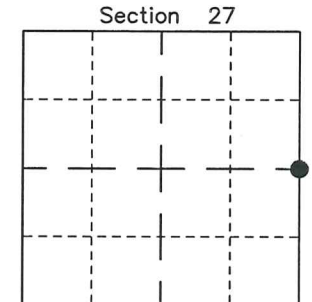
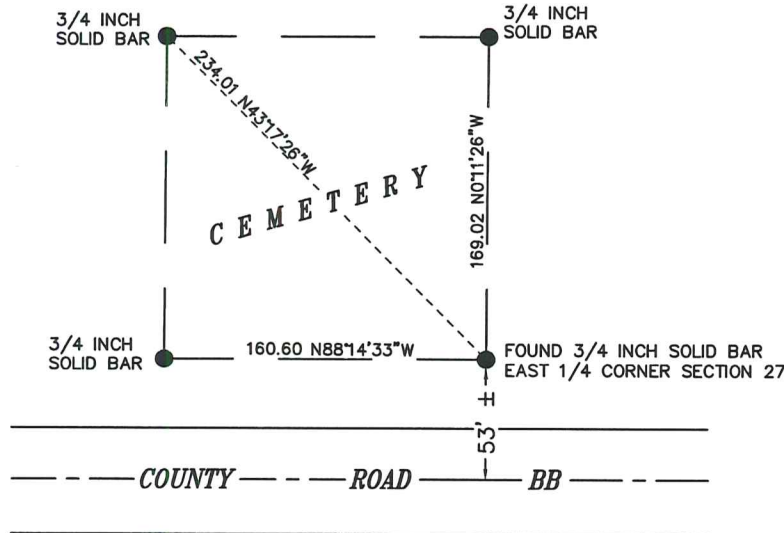
Witnesses to corner location:

Nick Hillmer
Josh Oslund
Dan Greenwald

MONROE COUNTY
COORDINATE SYSTEM
NAD 1983 (2007)

FOUND 3/4 INCH SOLID BAR
Northing (Y) 402766.06
Easting (X) 652595.59

Base Station - 22 182W
Northing (Y) 408053.25
Easting (X) 679287.00



● = LOCATION CORNER
Corner I.D. E 1/4 27
T 18 N R 3 W
Town of La Fayette
Monroe County, WI.

All distances are shown in U.S. Survey Feet.
Bearings are for tie reference purposes only.
Coordinates were derived from RTK GNSS procedures.