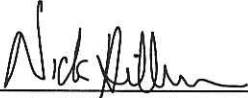


CERTIFICATE

I, Nicholas M. Hillmer, do hereby certify that this document and the data contained herein was prepared by me or under my direct supervision and that I am a duly Licensed Land Surveyor under the laws of the State of Wisconsin.

Dated this 21st day of May, 2013



Nicholas M. Hillmer, P.L.S. 2909
Anderson Engineering of Minnesota, LLC.

CERTIFIED LAND CORNER

History of corner established since Original Government Survey

In 1980 William Jung set the corner at a computed location that fits the old Fort McCoy corners along the north line of the Northwest Quarter of Section 34. Jung found a Harrison monument set by him at the northwest corner and a concrete McCoy monument 24.7 feet north of the northwest sixteenth corner. Jung set a Harrison monument on line with the northwest and northwest sixteenth corners at distance from the N1/16NW corners and at distance from the N1/16NW corner equal distance between the northwest and N1/16NW corners.

Description of evidence found

On August 29th, 2012, Anderson Engineering of Minnesota located the Harrison monument flush with the ground and 0.6 feet west of a 4 inch square wood post.

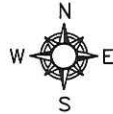
No. 21803270020



Description of corner and witness monuments, references and accessories used to perpetuate the original or re-established location of this corner:

Witnesses to corner location:

Nick Hillmer
Josh Oslund
Dan Greenwald

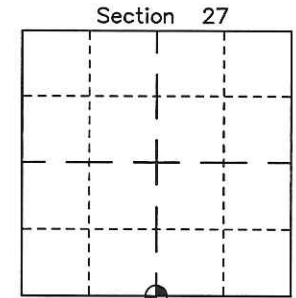
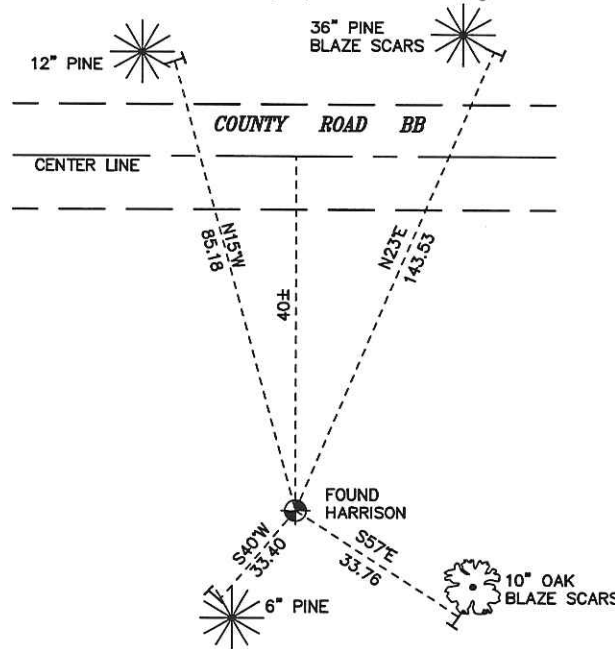


MONROE COUNTY
COORDINATE SYSTEM
NAD 1983 (2007)

HARRISON MONUMENT
Northing (Y) 400097.86
Easting (X) 649988.30

Base Station - 22 182W
Northing (Y) 408053.25
Easting (X) 679287.00

All distances are shown in U.S. Survey Feet.
Ties are to 60D nails set in trees.
Bearings are for tie reference purposes only.
Coordinates were derived from RTK GNSS procedures.



⊙ = LOCATION CORNER
Corner I.D. S 1/4 27
T 18 N R 3 W
Town of La Fayette
Monroe County, WI.

21803270020

I, William C. Jung, do hereby certify that on the 14th day of May 1980, I found ~~(evidence)~~ (no evidence) of the North 1/4 corner of Section 34, T 18 N, R 3 W Fourth Principal Meridian, and I re-established said corner according to the Wisconsin Statutes as shown and described hereon.

Dated this 5th day of March 1981.

William C. Jung

William C. Jung, R.L.S. 1323
Title

History of corner establishment since Original Government Survey

None recorded since the original government survey.

Description of corner evidence found:

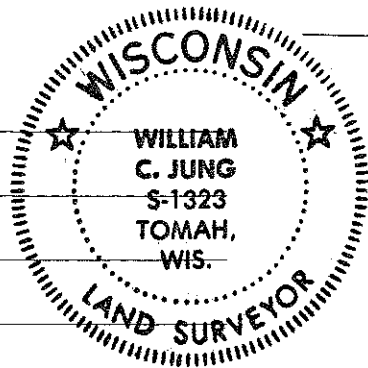
Set the corner at a computed location that fits the old Fort McCoy corners along the North line of the NW1/4 of Section 34. Found a Harrison set by me at the NW corner. This is at the old McCoy boundary location. Found a concrete McCoy marker 24.7 feet North of the N1/16NW corner. Set the corner on line with the NW and N1/16NW corners and at a distance from the N1/16NW corner equal to the distance between the NW and N1/16NW corners. Set a Harrison marker.

COUNTY SURVEYOR FORM NO. 1

Description of corner and witness monuments, references and accessories used to perpetuate the original or re-established location of this corner:

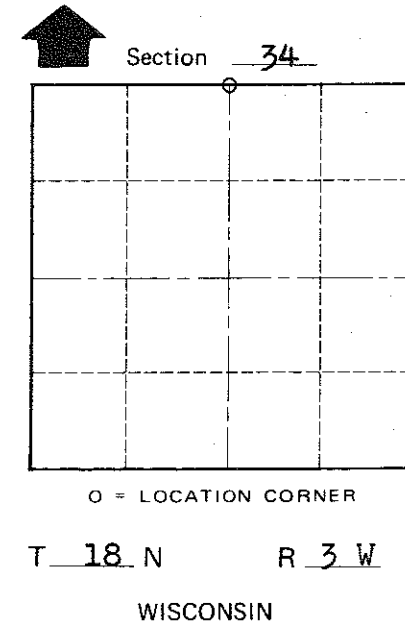
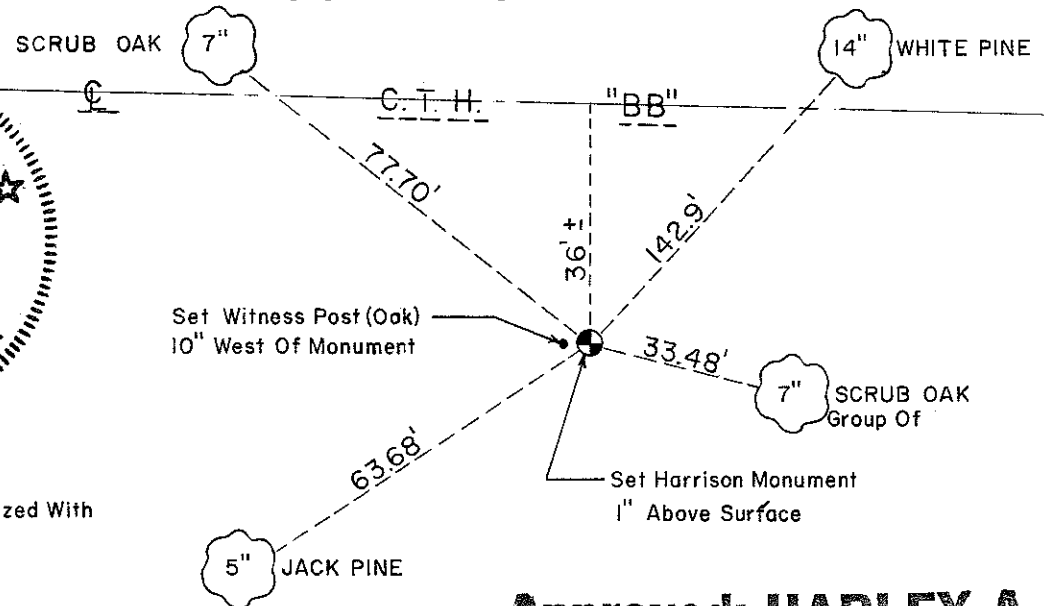
Witnesses to corner location:

William Jung
Todd Tormoen
Scott Sowers



NOTE:

Trees Double Blazed With Nail & Cap Set



Approved: **HARLEY A. SIMÉ**
MONROE CO. SURVEYOR

SURVEY CONTROL ORDER

Horizontal _____
Vertical _____

WISCONSIN COORDINATE SYSTEM

Corner	East (X)	North (Y)	Elevation (Z)	Zone
Control Sta. Name				

Town Lafayette
County of Monroe
Wisconsin