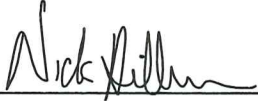


# CERTIFICATE

I, Nicholas M. Hillmer, do hereby certify that this document and the data contained herein was prepared by me or under my direct supervision and that I am a duly Licensed Land Surveyor under the laws of the State of Wisconsin.

Dated this 21st day of May, 2013



Nicholas M. Hillmer, P.L.S. 2909  
Anderson Engineering of Minnesota, LLC.

# CERTIFIED LAND CORNER

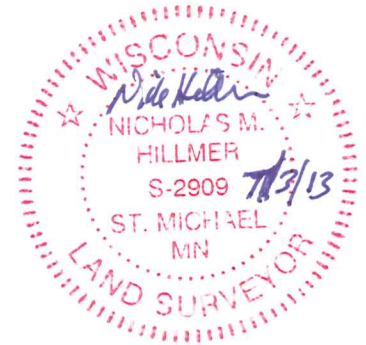
## History of corner established since Original Government Survey

There is no known history of this corner since the government survey.

## Description of evidence found

On May 7th, 2013, Anderson Engineering of Minnesota set a Harrison monument by double proportioned method between the south quarter corner of Section 27 and the southeast corner of Section 26 and the southeast corner of Section 34 and the east quarter of Section 27. The monument is in a pine tree plantation and flush with the ground.

No. 21803270000



Description of corner and witness monuments, references and accessories used to perpetuate the original or re-established location of this corner:

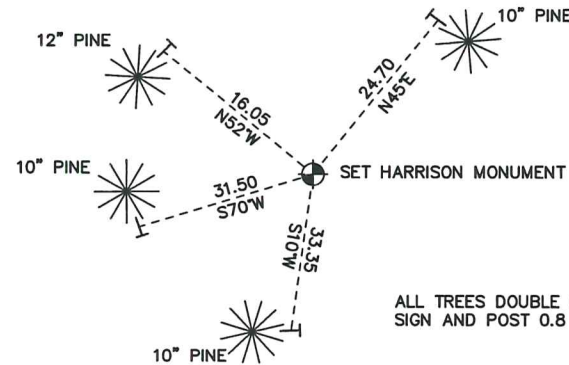
Witnesses to corner location:

Nick Hillmer  
Josh Oslund  
Dan Greenwald

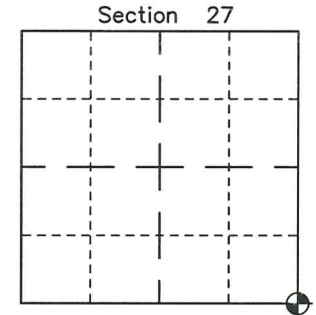
MONROE COUNTY  
COORDINATE SYSTEM  
NAD 1983 (2007)

HARRISON MONUMENT  
Northing (Y) 400108.70  
Easting (X) 652622.57

Base Station - 22 182W  
Northing (Y) 408053.25  
Easting (X) 679287.00



ALL TREES DOUBLE BLAZED.  
SIGN AND POST 0.8 FEET SOUTH.



⊕ = LOCATION CORNER  
Corner I.D. SE 27  
T 18 N R 3 W  
Town of La Fayette  
Monroe County, WI.

All distances are shown in U.S. Survey Feet.  
Ties are to 60D nails set in trees.  
Bearings are for tie reference purposes only.  
Coordinates were derived from RTK GNSS procedures.