

**CERTIFICATE**

I, Nicholas M. Hillmer, do hereby certify that this document and the data contained herein was prepared by me or under my direct supervision and that I am a duly Licensed Land Surveyor under the laws of the State of Wisconsin.

Dated this 21st day of May, 2013



Nicholas M. Hillmer, P.L.S. 2909  
Anderson Engineering of Minnesota, LLC.

**CERTIFIED LAND CORNER**

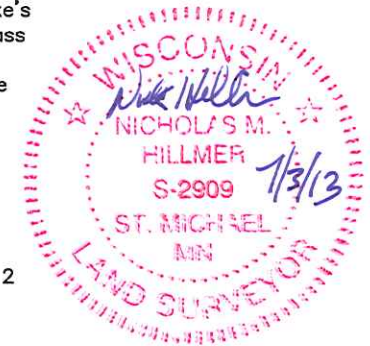
**History of corner established since Original Government Survey**

The 1940's McCoy boundary notes show a corner at this location. Heidecke's map of January 1980 shows a Fort McCoy concrete monument with a brass cap at the corner. Feddersen's notes from December 1982 also show a McCoy marker at this corner. In December of 1982 William Jung found the McCoy marker and accepted it as the corner.

**Description of evidence found**

On August 29th, 2012, Anderson Engineering of Minnesota located the McCoy monument, a 4 inch U.S Army Corps of Engineers survey control mark disk stamped MCCOY BOUNDARY set in concrete. The monument is 2 feet north of a 4 inch square wood post with survey maker sign.

No. 21803212000



Description of corner and witness monuments, references and accessories used to perpetuate the original or re-established location of this corner:

Witnesses to corner location:

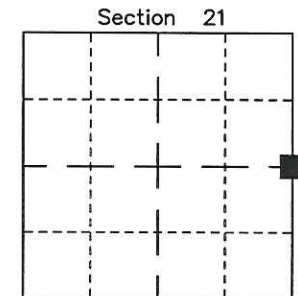
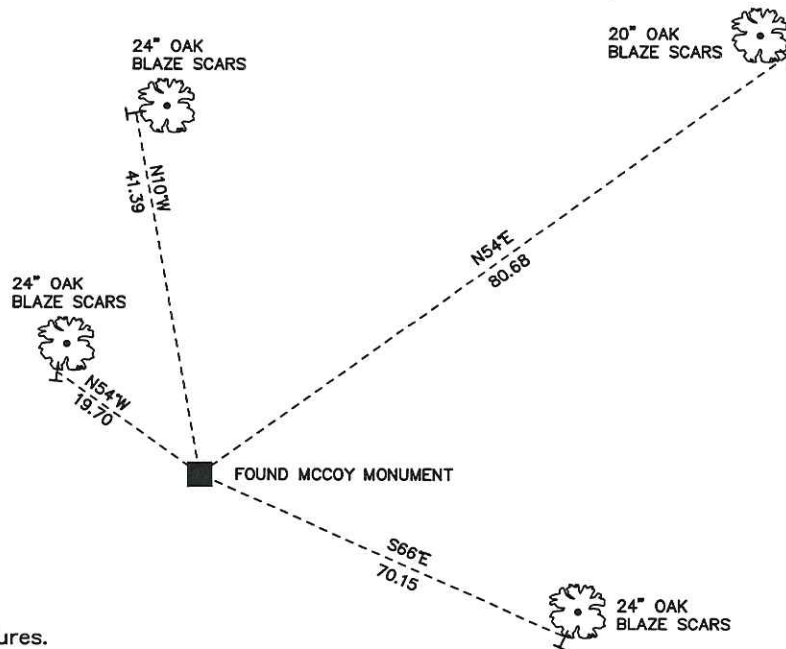
Nick Hillmer  
Josh Oslund  
Dan Greenwald

MONROE COUNTY  
COORDINATE SYSTEM  
NAD 1983 (2007)

MCCOY MONUMENT  
Northing (Y) 408062.55  
Easting (X) 647320.70

Base Station - 22 182W  
Northing (Y) 408053.25  
Easting (X) 679287.00

All distances are shown in U.S. Survey Feet.  
Ties are to 60D nails set in trees.  
Bearings are for tie reference purposes only.  
Coordinates were derived from RTK GNSS procedures.



■ = LOCATION CORNER  
Corner I.D. E 1/4 21  
T 18 N R 3 W  
Town of La Fayette  
Monroe County, WI.

**21803212000**

I, William C. Jung, do hereby certify that on the 13<sup>th</sup> day of December 19 82, I found (evidence) ~~(evidence)~~ of the East ¼ corner of Section 21, T 18 N, R 3 W Fourth Principal Meridian, and I re-established said corner according to the Wisconsin Statutes as shown and described hereon.

History of corner establishment since Original Government Survey

This corner was reset during the Camp McCoy boundary survey in WWII. Heidecke's map of January, 1980, shows a Fort McCoy concrete monument with a brass cap at the corner. Feddersen's notes of December of 1982 also show a McCoy marker at this corner.

Description of corner evidence found:

I found the McCoy marker and accepted it as the corner.

Dated this 17<sup>th</sup> day of Dec. 1982.

William C. Jung

Deputy County Surveyor

Title

Approved: **HARLEY A. SIME**  
**MONROE CO. SURVEYOR**

COUNTY SURVEYOR FORM NO. 1

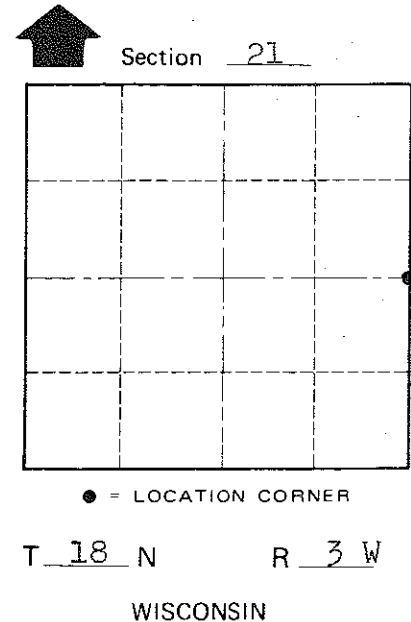
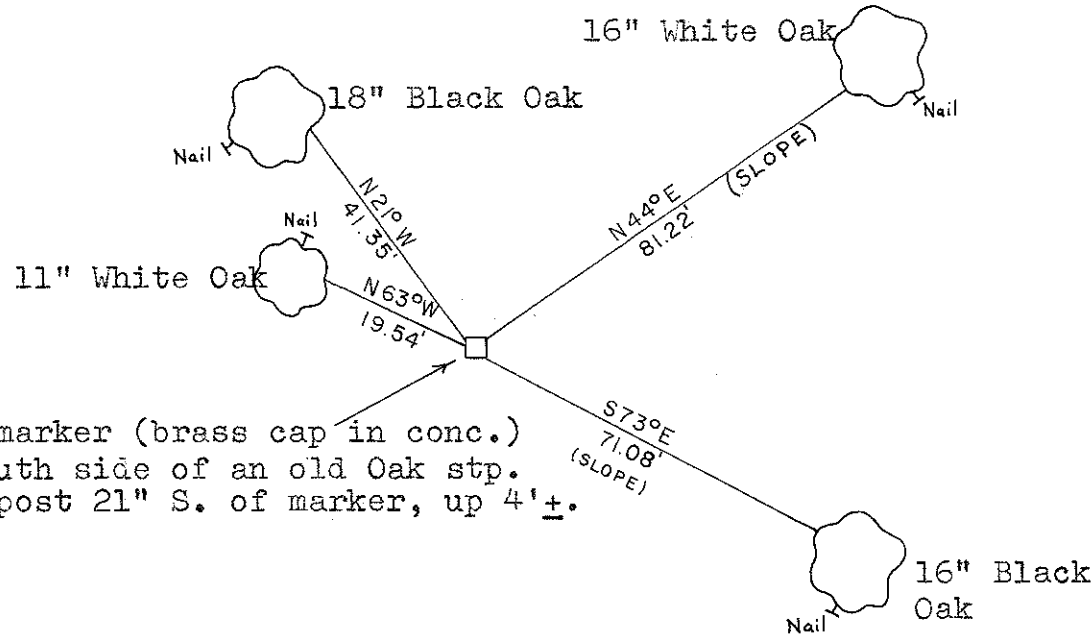
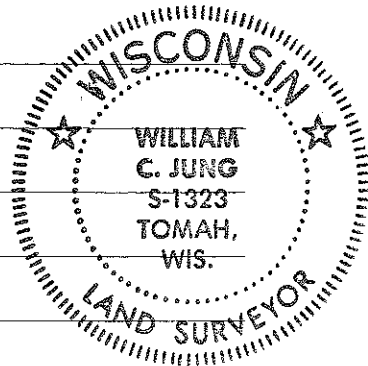
Description of corner and witness monuments, references and accessories used to perpetuate the original or re-established location of this corner:

All B.T.'s double blazed; each dist. to a nail in a hack on the side of the tree.

Witnesses to corner location:

William C. Jung

Melvin A. Pliner



SURVEY CONTROL ORDER

Horizontal	_____
Vertical	_____

WISCONSIN COORDINATE SYSTEM

Corner	East (X)	North (Y)	Elevation (Z)	Zone
Control Sta. Name				

~~City, Village or~~ Town of Lafayette  
County of Monroe