

CERTIFICATE

I, Nicholas M. Hillmer, do hereby certify that this document and the data contained herein was prepared by me or under my direct supervision and that I am a duly Licensed Land Surveyor under the laws of the State of Wisconsin.

Dated this 21st day of May, 2013



Nicholas M. Hillmer, P.L.S. 2909
Anderson Engineering of Minnesota, LLC.

CERTIFIED LAND CORNER

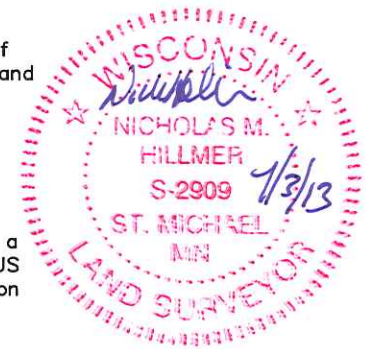
History of corner established since Original Government Survey

Kenyon was at this corner in September of 1886. The 1940's McCoy boundary notes show a corner at this location. Feddersen's notes from December 1982 show a McCoy monument at this corner. In November of 1982 William Jung found a broken McCoy boundary marker, removed it, and replaced it with a Harrison marker.

Description of evidence found

On August 29th, 2012, Anderson Engineering of Minnesota located the Harrison monument 0.5 feet below grade. The mark is 0.3 feet west of a north-south barbed wire fence and a 4 inch square wood post with a US government no trespassing sign on one side and a survey marker sign on the opposite side.

No. _____
21803210000



Description of corner and witness monuments, references and accessories used to perpetuate the original or re-established location of this corner:

Witnesses to corner location:

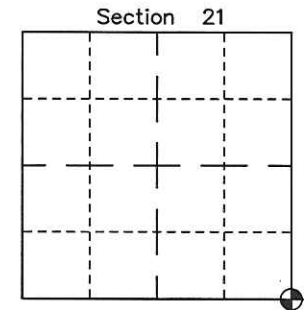
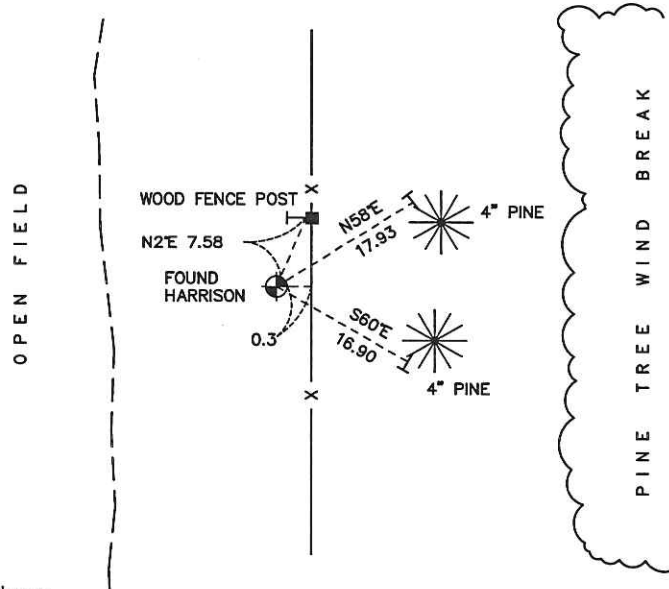
Nick Hillmer
Josh Oslund
Dan Greenwald

MONROE COUNTY
COORDINATE SYSTEM
NAD 1983 (2007)

HARRISON MONUMENT
Northing (Y) 405433.80
Easting (X) 647305.37

Base Station - 22 182W
Northing (Y) 408053.25
Easting (X) 679287.00

All distances are shown in U.S. Survey Feet.
Ties are to 60D nails set in trees.
Bearings are for tie reference purposes only.
Coordinates were derived from RTK GNSS procedures.



⊕ = LOCATION CORNER
Corner I.D. SE 21
T 18 N R 3 W
Town of La Fayette
Monroe County, WI.

21803210000

I, William C. Jung, do hereby certify that on the 29th day of November 19 82, I found (evidence) ~~removed~~ of the Southwest corner of Section 22, T 18 N, R 3 W Fourth Principal Meridian, and I re-established said corner according to the Wisconsin Statutes as shown and described hereon.

History of corner establishment since Original Government Survey

Kenyon (?) was at this corner in September of 1886. According to the Camp McCoy boundary notes, a monument was either found or set at this corner. Feddersen's notes of December, 1982, show a McCoy marker at this corner.

Description of corner evidence found:

I found a broken 6" square concrete McCoy boundary marker, removed it, and replaced it with a Harrison marker.

Dated this 21st day of Dec. 1982.

William C. Jung

Deputy County Surveyor

Title

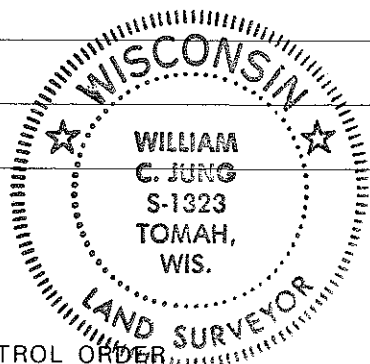
Approved: HARLEY A. SIME
MONROE CO. SURVEYOR

Description of corner and witness monuments, references and accessories used to perpetuate the original or re-established location of this corner:

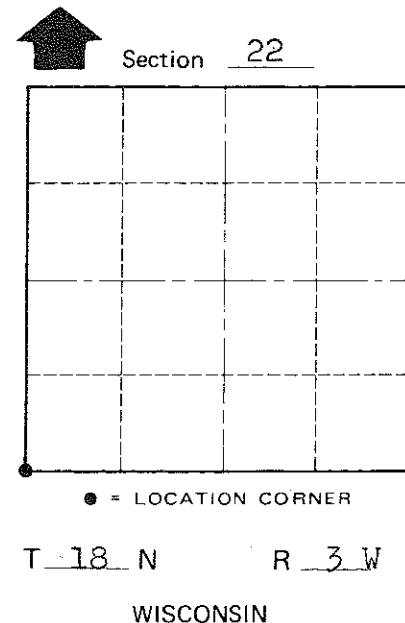
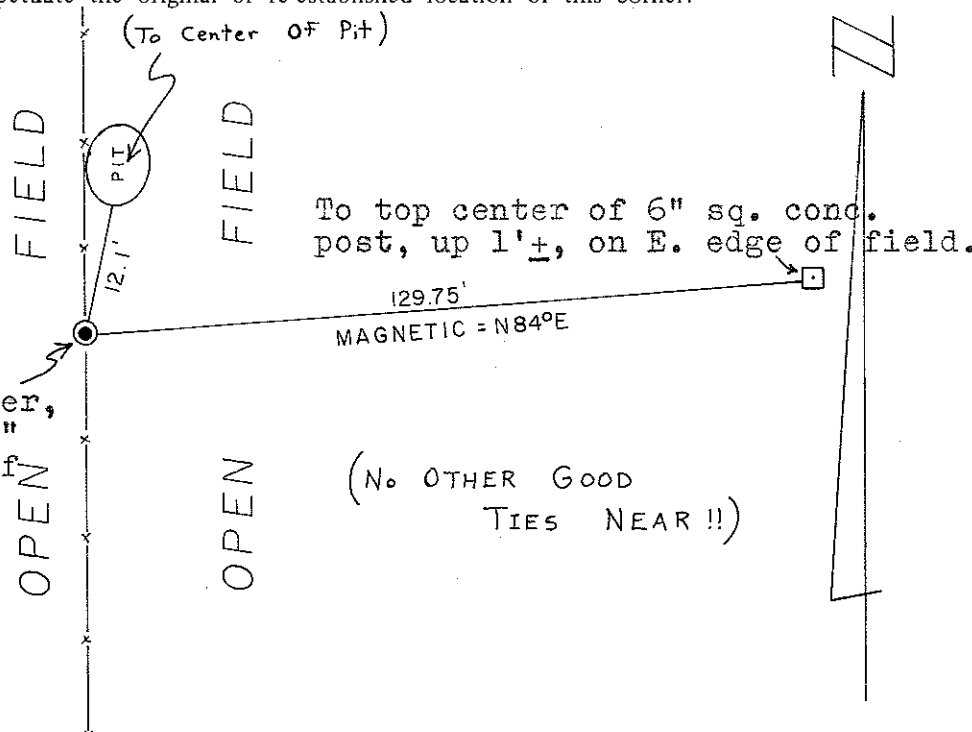
Witnesses to corner location:

William C. Jung

Melvin A. Pliner



Removed broken McCoy marker & replaced it with a Harrison marker, down 1"±. Set a 4"x4" post w/sign to S.E. of corner.



WISCONSIN COORDINATE SYSTEM

Horizontal				
Vertical				
Corner	East (X)	North (Y)	Elevation (Z)	Zone
Control Sta. Name				

~~Village of~~ Town of Lafayette
County of Monroe

COUNTY SURVEYOR FORM NO. 1