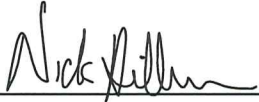


CERTIFICATE

I, Nicholas M. Hillmer, do hereby certify that this document and the data contained herein was prepared by me or under my direct supervision and that I am a duly Licensed Land Surveyor under the laws of the State of Wisconsin.

Dated this 21st day of May, 2013



Nicholas M. Hillmer, P.L.S. 2909
Anderson Engineering of Minnesota, LLC.

CERTIFIED LAND CORNER

History of corner established since Original Government Survey

Fred Holden found a stone at this corner in 1910. In 1957 Lenschow set an iron pipe at this corner. In 1978 Feddersen found no evidence of the stone or pipe. Feddersen found Lenschow's iron pipes of record at the southeast corner and the S1/16-SE corner of Section 20. Feddersen re-established the corner location by extending the line north and doubling the distance between the monument.

Description of evidence found

On February 27th, 2013 Anderson Engineering of Minnesota recovered a broke off Harrison monument sloping westerly 0.2 feet above grade.

No. 21803202000



Description of corner and witness monuments, references and accessories used to perpetuate the original or re-established location of this corner:

Witnesses to corner location:

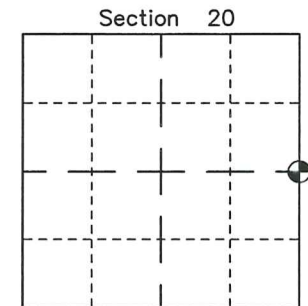
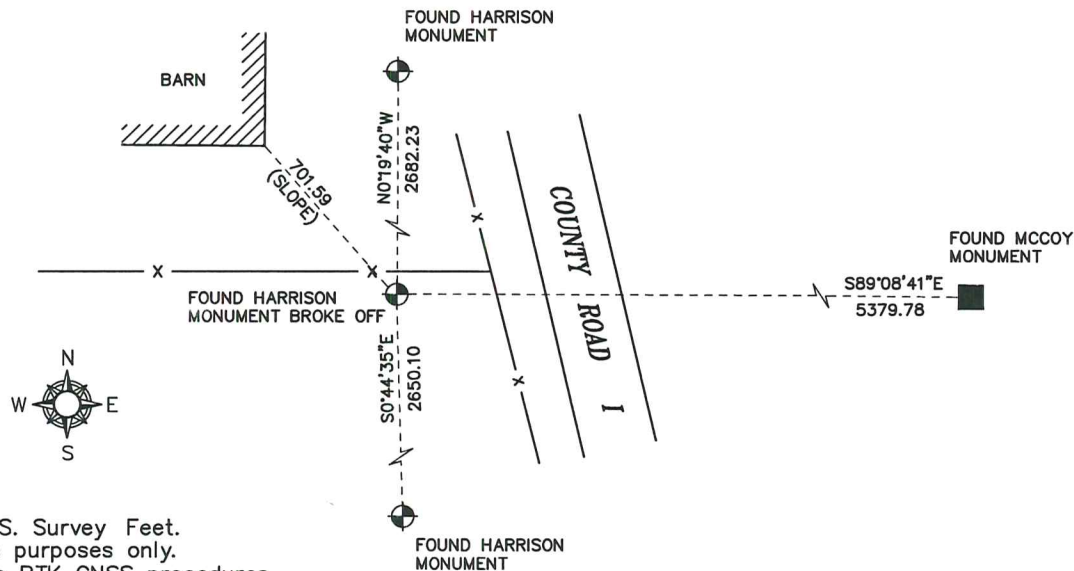
Nick Hillmer
Josh Oslund
Dan Greenwald

MONROE COUNTY
COORDINATE SYSTEM
NAD 1983 (2007)

HARRISON MONUMENT
Northing (Y) 408142.86
Easting (X) 641941.52

Base Station - 22 182W
Northing (Y) 408053.25
Easting (X) 679287.00

All distances are shown in U.S. Survey Feet.
Bearings are for tie reference purposes only.
Coordinates were derived from RTK GNSS procedures.



● = LOCATION CORNER
Corner I.D. E 1/4 20
T 18 N R 3 W
Town of La Fayette
Monroe County, WI.

CERTIFICATE

CERTIFIED LAND CORNER

No. #76

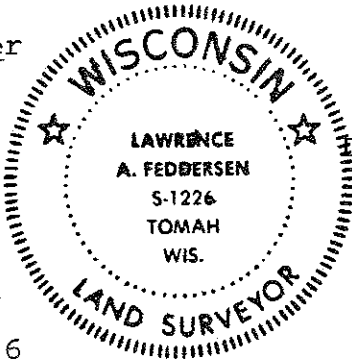
21803202000

I, Lawrence A. Feddersen, do hereby certify that on the 24th day of August 1978, I found ~~(evidence)~~ (no evidence) of the East Quarter corner of Section 20, T 18 N, R 3 W, Fourth Principal Meridian, and I re-established said corner according to the Wisconsin Statutes as shown and described hereon.

Dated this 3 day of October 1978.

Lawrence A. Feddersen

REGISTERED LAND SURVEYOR S-1226
Title



History of original corner establishment:

In December, 1910, Fred Holden found a stone set by a former surveyor at this corner. In November, 1957, Henry Lenschow set an iron pipe at this corner, but it is not recorded on his map which is recorded in Vol.1, C.S.M., P. 4.

Description of corner evidence found:

We conducted an extensive search at the computed corner location and of the surrounding areas on both sides of the fence. We did not locate the stone or iron pipe. We found Lenschow's iron pipes of record at the SE and S1/16-SE corners of Section 20. We re-established the corner location by extending the line North and doubling the distance between the aforementioned pipes of record.

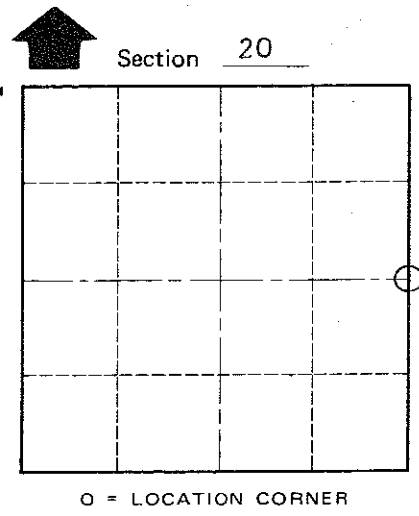
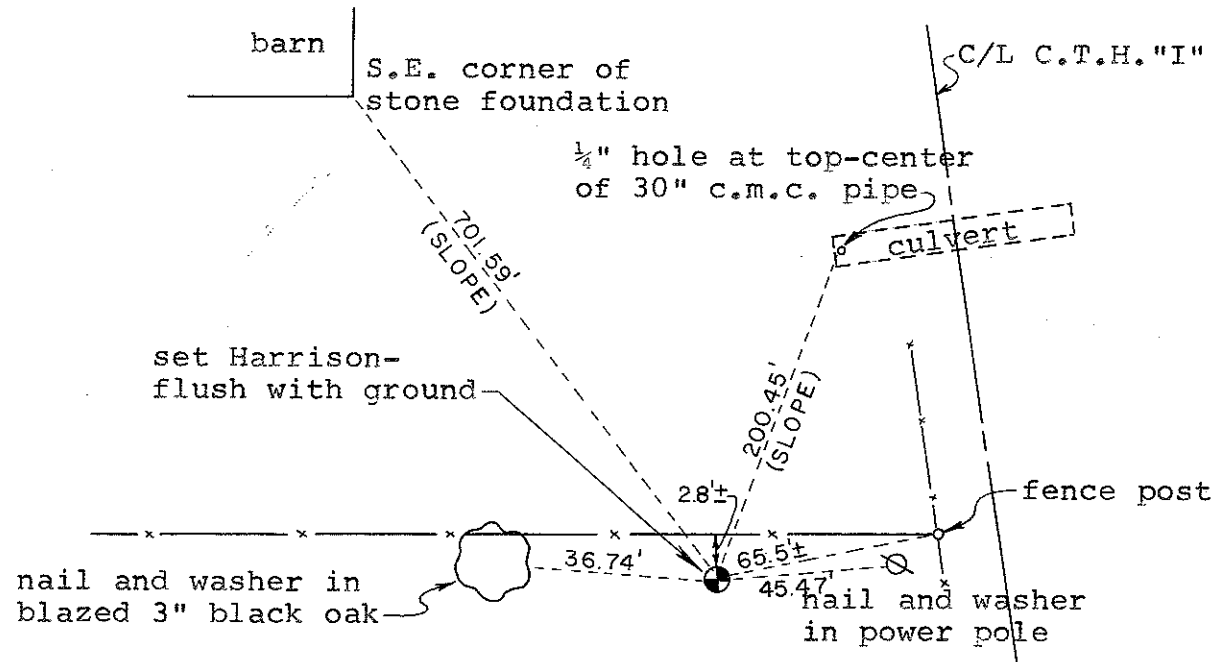
Description of corner and witness monuments, references and accessories used to perpetuate the original or re-established location of this corner:

Witnesses to corner location:

Lawrence A. Feddersen

Douglas J. Malliet

Steven R. Towne



T 18 N R 3 W
WISCONSIN

COUNTY SURVEYOR FORM NO. 1

SURVEY CONTROL ORDER

Horizontal	_____
Vertical	_____

WISCONSIN COORDINATE SYSTEM

Corner	East (X)	North (Y)	Elevation (Z)	Zone
Control Sta. Name				

City, Village or Town of LAFAYETTE

County of MONROE